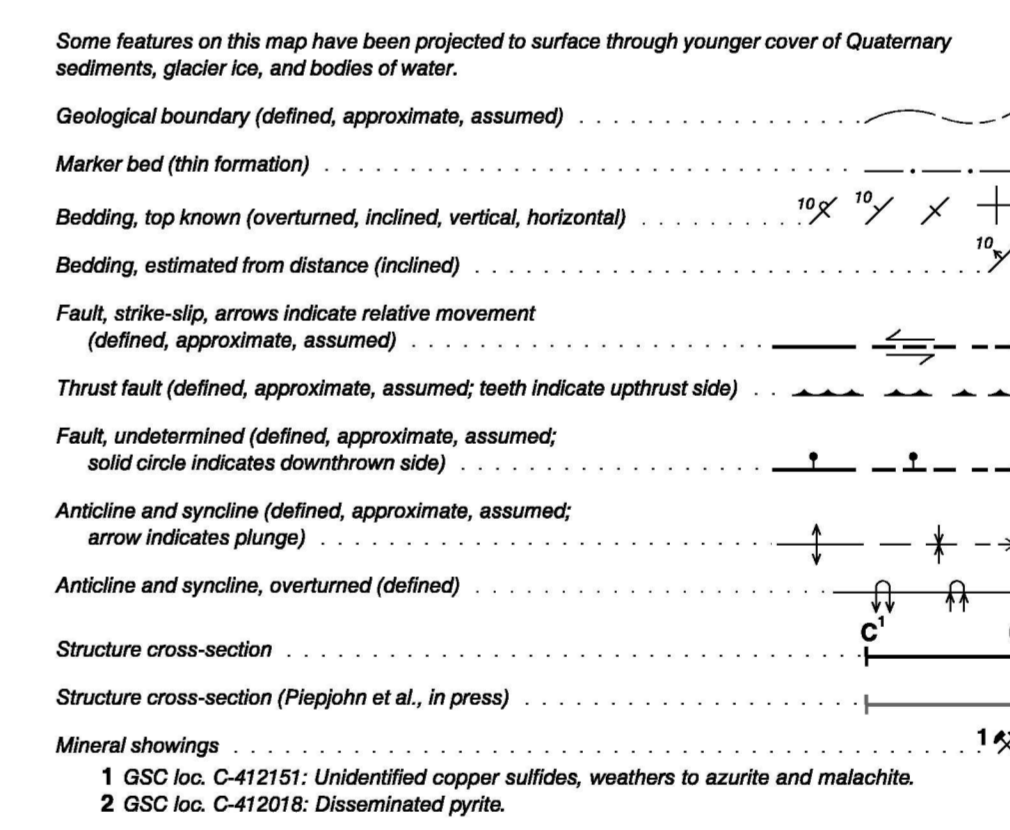
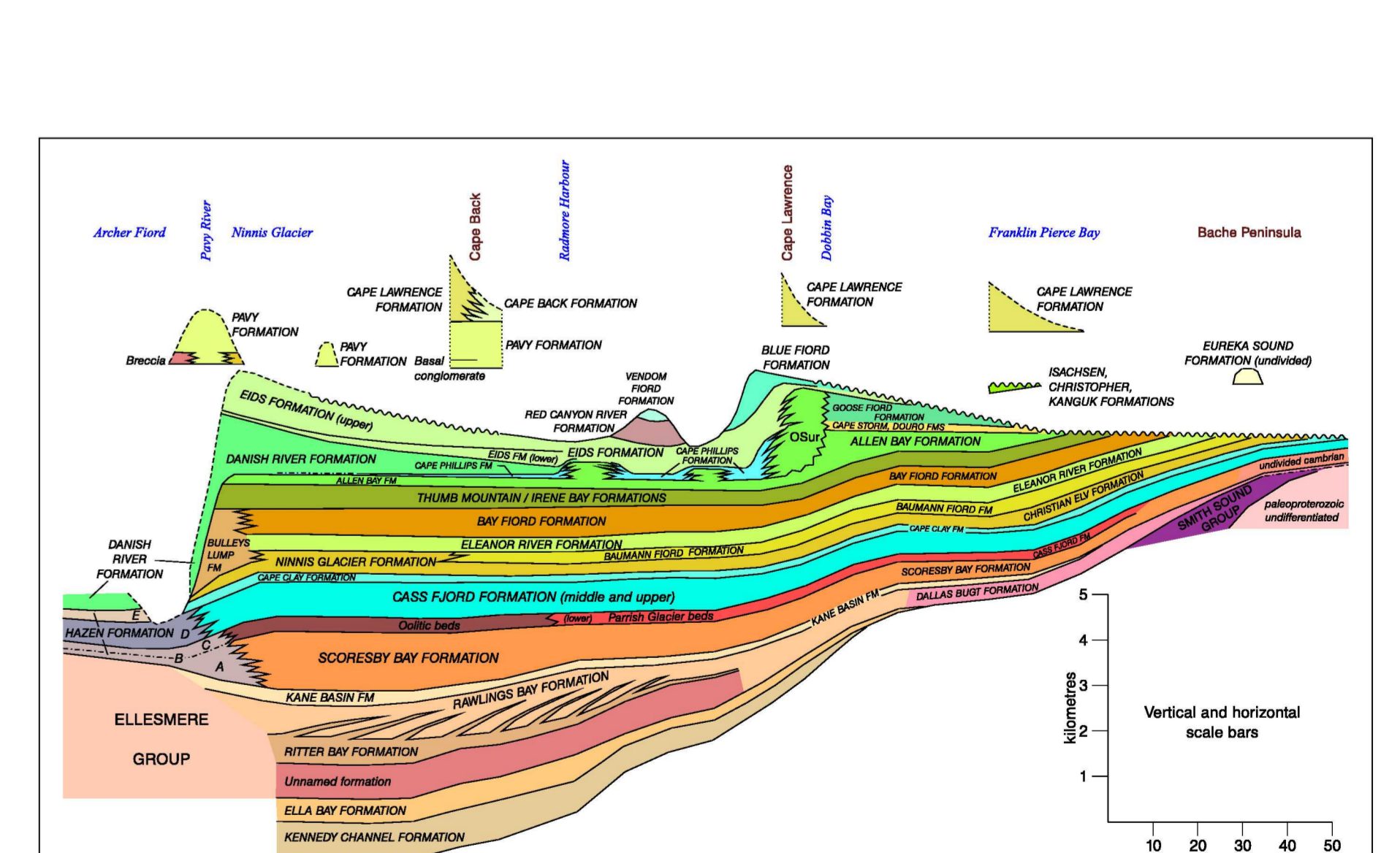
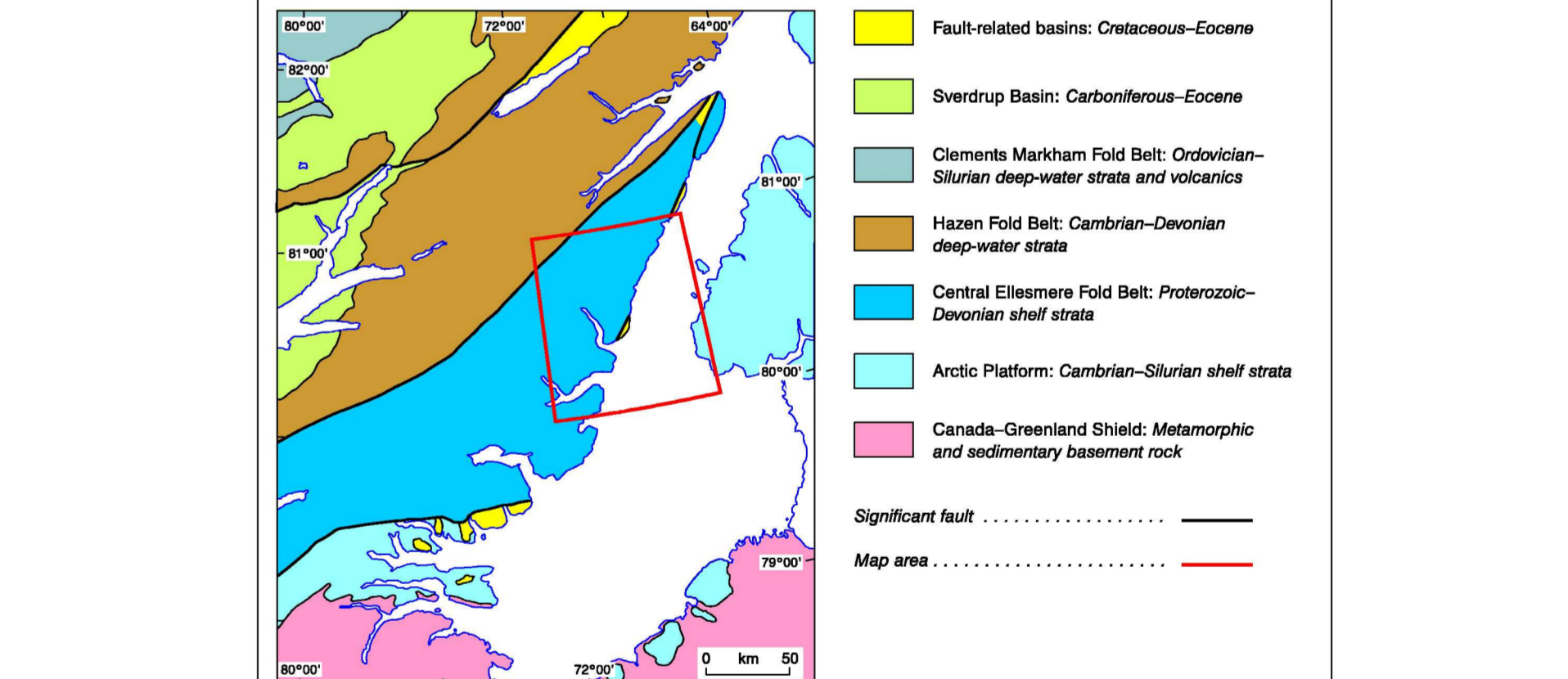


Legend table with columns for geological unit codes and their corresponding descriptions, including Quaternary, Tertiary, Paleozoic, and Proterozoic units.

Legend table for specific geological units, including descriptions for the Northwest, Northeast, and Southwest parts of the map.



NOTES: 1. The lateral contact of the 'Hansen Glacier beds' and 'Hobbs beds' of the Cass Fjord Formation... 2. The Ritter Bay Formation consists of major intertonguing units of shale and sandstone... 3. An account of the geology of Hans Island has been prepared separately (Harrison et al., in press).



REFERENCES: List of scientific publications cited in the report, including works by Harrison et al., Phipps et al., and others.