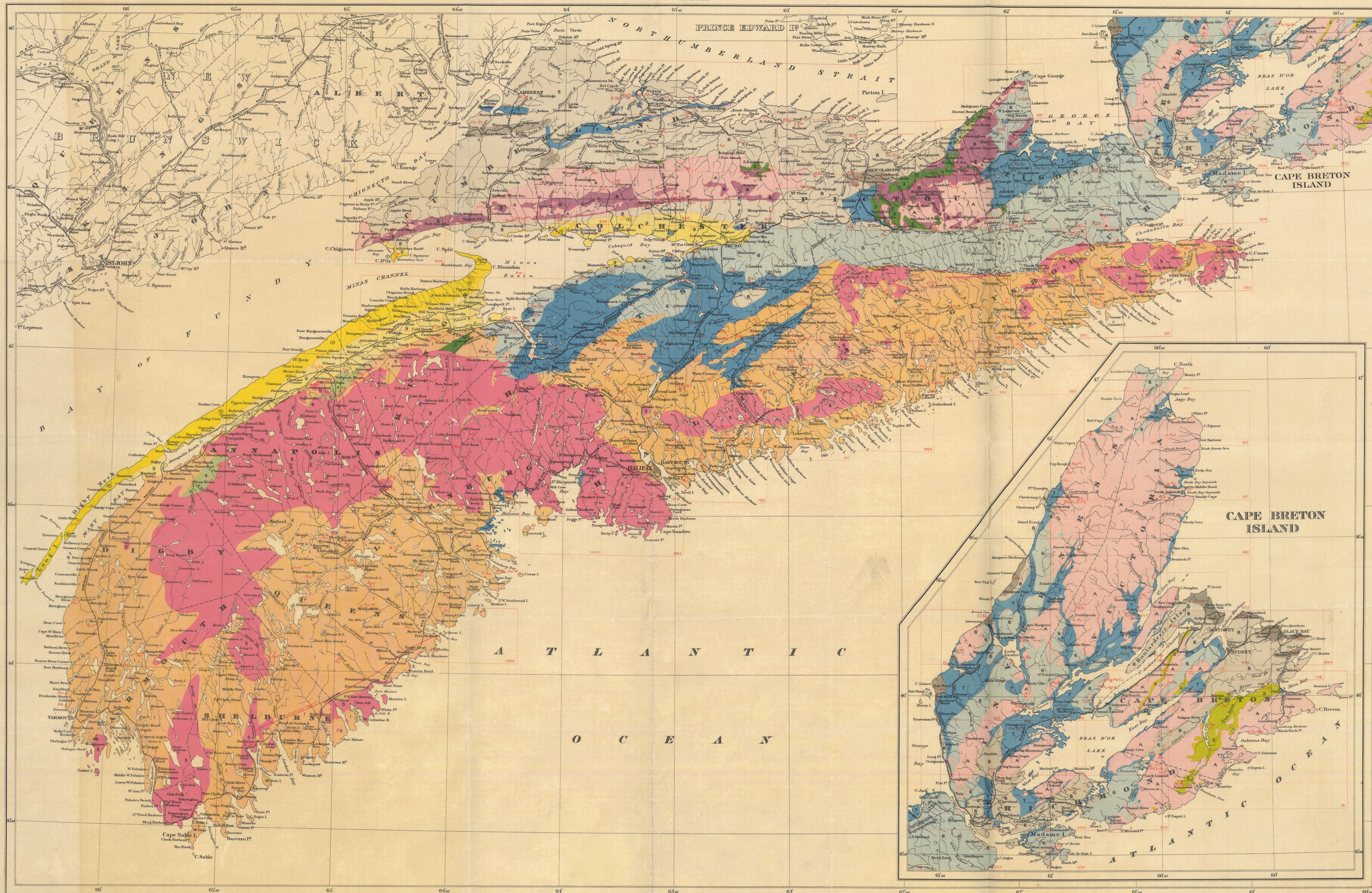


Issued 1927



LEGEND

- MESOZOIC**
- 10 Basalt and diabase (flow, sill, dyke)
  - 9 Sandstone
- CARBONIFEROUS**
- 8 Sandstone, shale, conglomerate, coal
- PENNSYLVANIAN**
- 7 Limestone, gypsum, shale, sandstone
- WINDSOR**
- 6 Sandstone, shale, conglomerate
- HORTON**
- 5 Granite
- DEVONIAN**
- 4 Limestone, shale and slate, sandstone, etc.
- SILURIAN**
- 3 Limestone, slate, sandstone, etc.
- CAMBRIAN**
- 2 Slate sandstone, etc.
- PRECAMBRIAN**
- 1 GOLD-BEARING SERIES  
Quartzite, slate

NOTE  
 MAX. LIMITS AND PROJECTION NUMBERS OF ONE INCH TO ONE MILE SHEETS ISSUED BY THE GEOLOGICAL SURVEY, ARE SHOWN IN RED.

SOURCES OF INFORMATION  
 Compiled from surveys by the Geological Survey

- PRINCIPAL MINERAL OCCURRENCES
- x Ab Abrasives
  - x Ag Silver
  - x An Anhydrite
  - x Ar Arsenic
  - x Au Gold
  - x Ba Barite
  - x BS Building stone
  - x C Coal
  - x CS Clay and shale
  - x Cu Copper
  - x Fe Iron
  - x Fl Feldspar
  - x F Fluor spar
  - x GS Grindstone
  - x G Gypsum
  - x Inf Infusorial earth
  - x Mg Magnesite
  - x Mn Manganese
  - x Mo Molybdenum
  - x Na Salt
  - x NS Salt spring
  - x OS Oil shale
  - x P Petroleum
  - x Pb Paint pigment
  - x Pb Lead
  - x Sb Antimony
  - x Sl Slate
  - x Sn Tin
  - x W Tungsten
  - x Zn Zinc

MAP 39A  
 (Second Edition)  
**NOVA SCOTIA SHEET**

Scale, 506,880 or 1 Inch to 8 Miles

This map has been produced from a scanned version of the original map  
 Reproduction par numérisation d'une carte sur papier

S.I. 6 Nova Scotia  
 A. Geol. Map 39A