

LEGEND

- DEVONIAN AND (?) MISSISSIPPIAN**
- 5 PORT LAMBTON BEDS: grey fissile and sandy shale; light grey, fine micaceous sandstone
 - 4 KETTLE POINT FORMATION: black fissile shale; some green shale
- DEVONIAN**
- 3 HAMILTON FORMATION: soft, blue and grey shale and grey limestone
 - 2 DUNDEE FORMATION: grey and buff limestone, chert, frosted sand grains
- DETROIT RIVER GROUP**
- 1 Brown and buff magnesian limestone and limestone, sandstone

SUBSURFACE FORMATIONS
(Cross-section only)

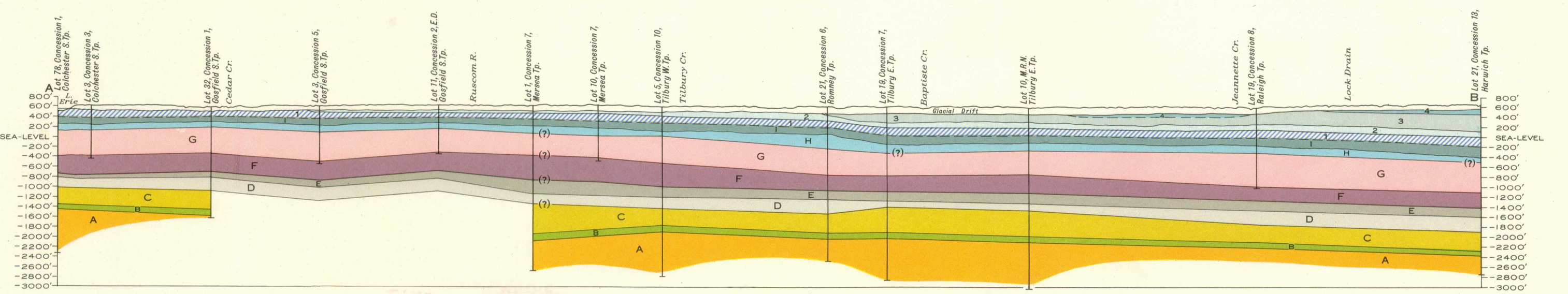
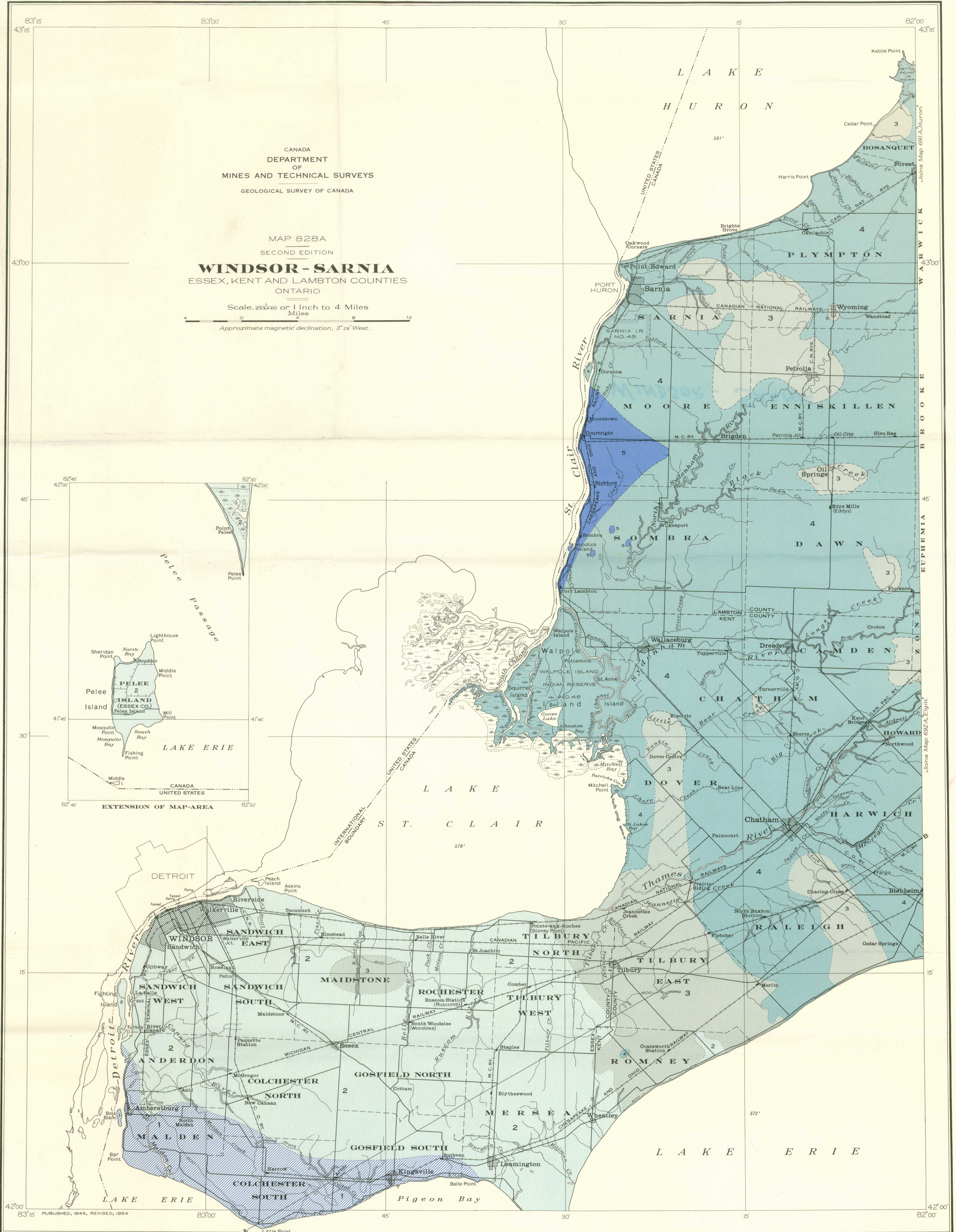
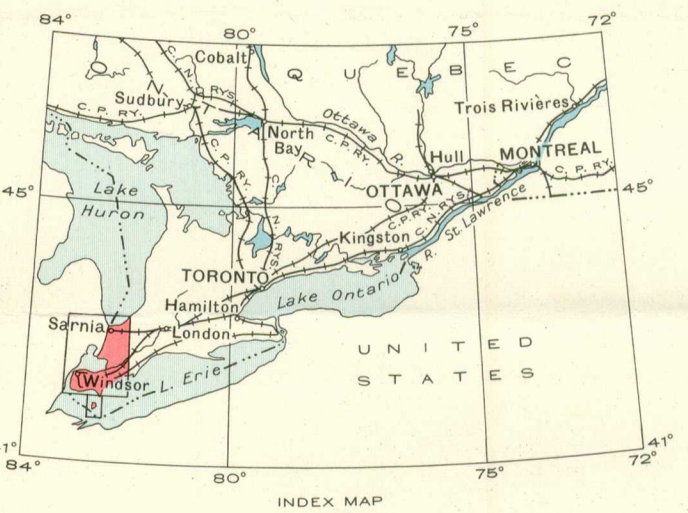
- DEVONIAN**
- I BOIS BLANC
- SILURIAN**
- H BASS ISLAND
 - G SALINA
 - F QUELPH and LOCKPORT
 - E ROCHESTER, IRONDEQUOIT, and REYNALDS, (CLINTON GROUP), CABOT HEAD, and MANITOULIN, (CATARACT GROUP)
- ORDOVICIAN**
- D QUEENSTON
 - C MEAFORD-DUNDAS
 - B BILLINGS
 - A TRENTON and BLACK RIVER GROUPS

Bedding (inclined)
Rock outcrop..... X

Geology by J. F. Caley, 1941
Revised by B. V. Sanford and W. B. Brady, 1952

Road well travelled.....
County boundary.....
Township boundary.....
Indian Reserve boundary.....
Quarry.....
Wharf.....
Drainage ditch.....
Marsh.....
Contours (interval 100 feet).....
Height in feet above mean sea-level..... 577

Base map compiled by the Topographical Survey, 1942, from Federal Government maps published in 1924, 1926, 1929, 1936, 1939 and 1940. Cartography by the Geological Cartography Division, 1944 and 1954



Structure section along line A-B
HORIZONTAL SCALE, 1 INCH TO 4 MILES
VERTICAL SCALE, 1 INCH TO 2000 FEET

This map has been reprinted from a scanned version of the original map. Reproduction par numérisation d'une carte sur papier.