

**Paleogene and Neogene**

- Basins developed on Eocene "Baffin" crust; offshore only
- Basins developed on Paleocene "Baffin" crust; offshore only

**Lower Cretaceous through Neogene**

- Basins and outliers on continental crust; onshore, offshore

**Lower Carboniferous through Lower Cretaceous**

- Sverdrup Basin; onshore only

**Neoproterozoic through Upper Devonian (0.57 to 0.36 Ga)**

- Arctic Platform; onshore, offshore
- Ellesmere-Greenland Fold Belt; onshore, offshore

**Neoproterozoic through Upper Silurian (0.6 to 0.42 Ga)**

- Basinal and basin-fill facies of Hazen Fold Belt and North Greenland Fold Belt; onshore only
- Volcanics, arc-associated sediments, and basin-fill strata of Clements Markham Fold Belt; onshore only

**Mid-Proterozoic through Silurian (1.0 to 0.4 Ga)**

- Peary composite terrane; onshore only

**Mid-Proterozoic (1.7 to ~0.9 Ga)**

- Thule and Borden basins and associated strata of Bylot and Thule supergroups (1.2 to 1.0 Ga); Independence Fjord Gp in NE Greenland; (1.7 to 1.2 Ga); onshore, offshore

**Archean and Paleoproterozoic (3.3 to 1.7 Ga)**

- Crystalline rocks of Canada-Greenland shield; onshore, offshore

**Geological contacts:**  
 Fault: circle on downthrown side; defined and approximate; assumed  
 Thrust and reverse fault: defined and approximate; assumed  
 E: Eclipse Basin  
 Sinistral strike slip fault: defined and approximate; assumed  
 Dextral strike slip fault: defined and approximate; assumed

**Cretaceous to Neogene basins**

AH: Axel Heiberg Basin  
 BP: Baffin Basin  
 C: Carey Basin  
 E: Eclipse Basin  
 FP: Franklin Pierce Basin  
 G: Glacier Basin  
 JD: Judge Daly Basin  
 JS: Jones Sound Basin  
 KY: Kap York Basin  
 LA: Lady Anne Basin  
 LH: Lake Hazen Basin  
 LS: Lancaster Sound Basin  
 NB: North Baffin Fan  
 NW: North Water Basin

AL: Arthur Laing Peninsula  
 BP: Bache Peninsula  
 CP: Cranshaws Peninsula  
 F: Franklin Ø  
 H: Hans Island  
 JD: Judge Daly Promontory  
 N: Northumberland Ø  
 S: Saunders Ø

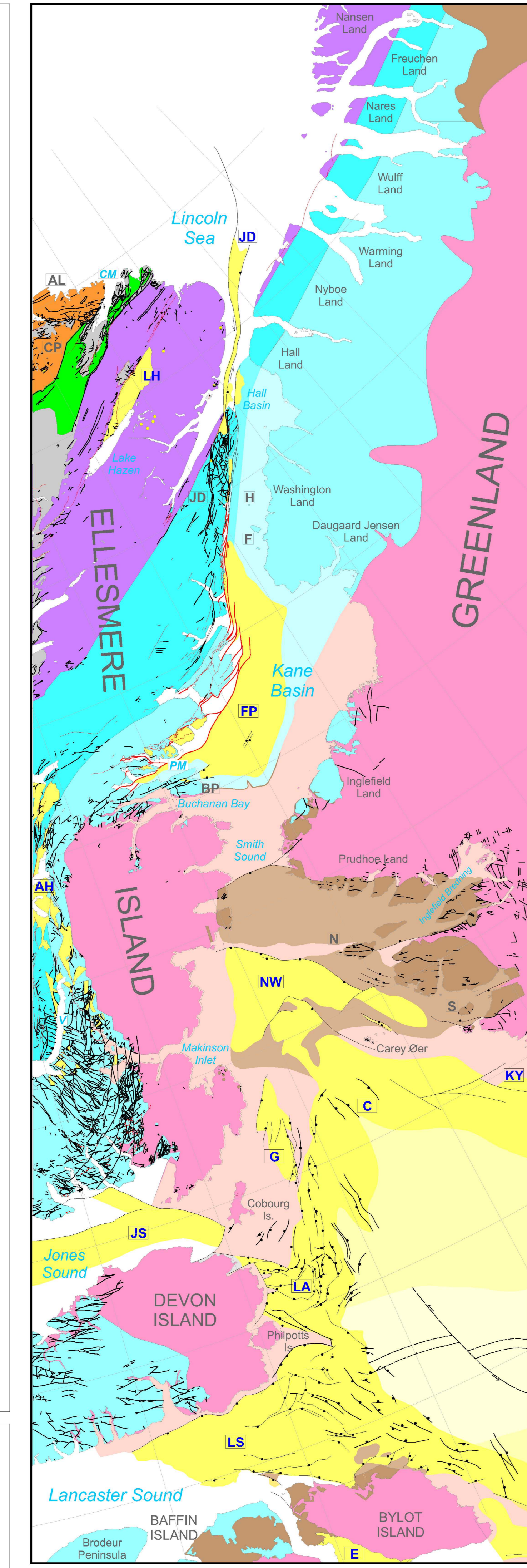
CM: Clements Markham Inlet  
 PM: Princess Marie Bay  
 V: Vardø Fjord

**Map Contributors**

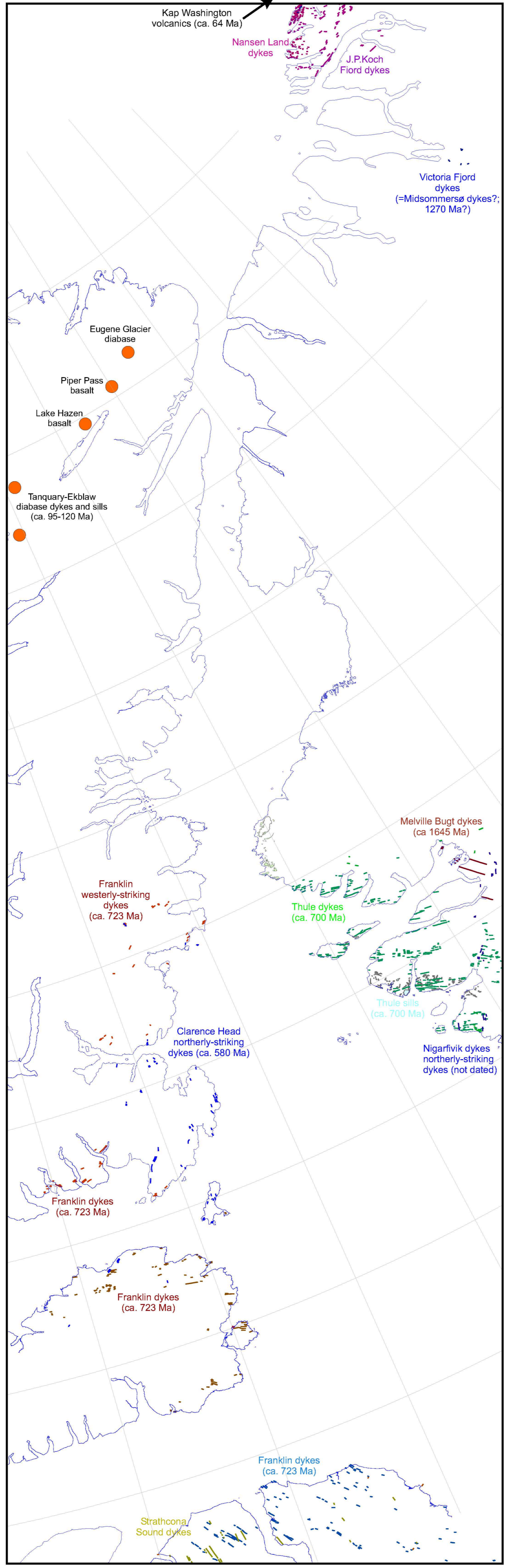
Tom Brent, GSC Calgary; industry reflection surveys, CD-ROM production  
 Ken Buchan, GSC Ottawa; dyke swarms and large igneous provinces  
 Detlef Damaske, BGR Hannover, Germany; 2001, 2003 aeromagnetic surveys  
 Richard Ernst, GSC Ottawa; dyke swarms and large igneous provinces  
 Thomas Furch, Danish Lithosphere Centre; 2001 refraction profiles  
 J. Chris Harrison, GSC Calgary; onshore geology compilation  
 Ruth Jackson, GSC Atlantic; seismic interpretation, compilation, project management  
 Ulrich Mayr, GSC Calgary; unpublished onshore geology maps, NE Ellesmere  
 Sonke Neben, BGR Hannover, Germany; 2001 reflection surveys  
 David Nunez, GSC Calgary; cartography, editing  
 Gordon Oakey, GSC Atlantic; bathymetry and potential field mapping, cartography  
 Philip Orlagen, GSC Atlantic; cartography and editing  
 Randy Shinduka, GSC Calgary; cartography and editing  
 Franz Tessemohr, BGR Hannover, Germany; field operations, project management

OPEN FILE 5278  
 THEMATIC GEOSCIENCE MAPS  
 Sheet 2 of 2  
**NARES STRAIT**  
 Scale 1:2 250 000 - Echelle 1/2 250 000

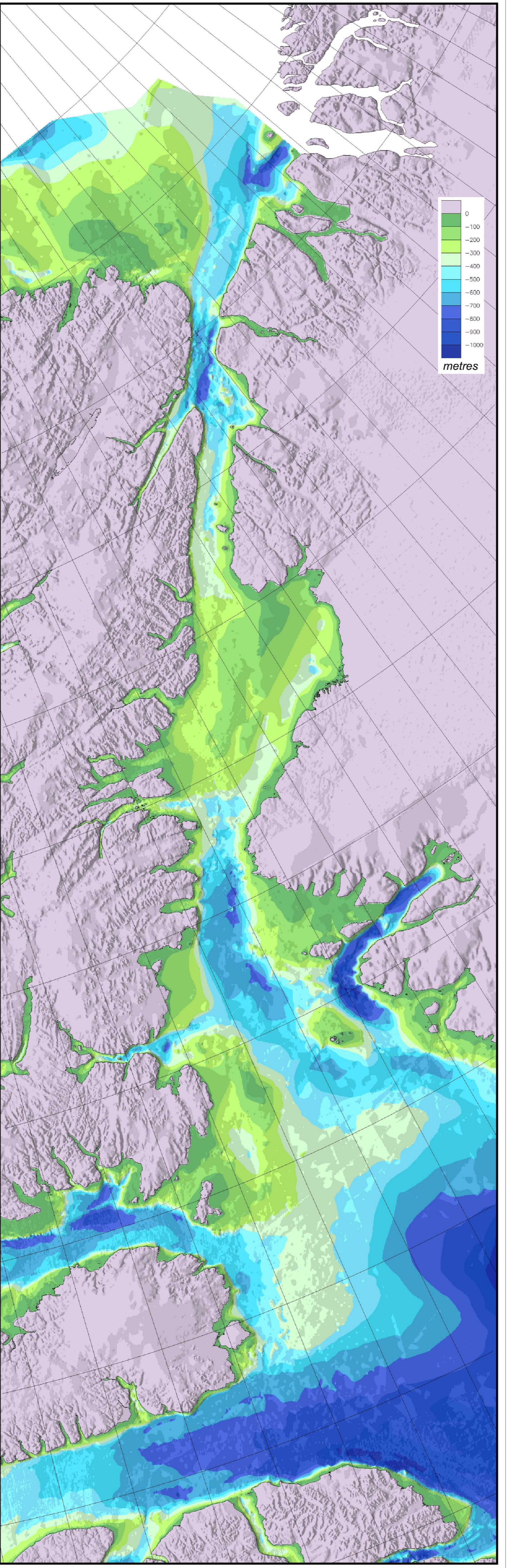
Recommended citation:  
 Harrison, J.C., Brent, T.A., and Oakey, G.N.  
 2008. Map sheet 2 of 2: Thematic Geoscience Maps, scale 1:2 250 000. In: Bedrock Geology of the Nares Strait Region of Arctic Canada and Greenland, with explanatory text and GIS content. Geological Survey of Canada, Open File 5278, 1 CD-ROM



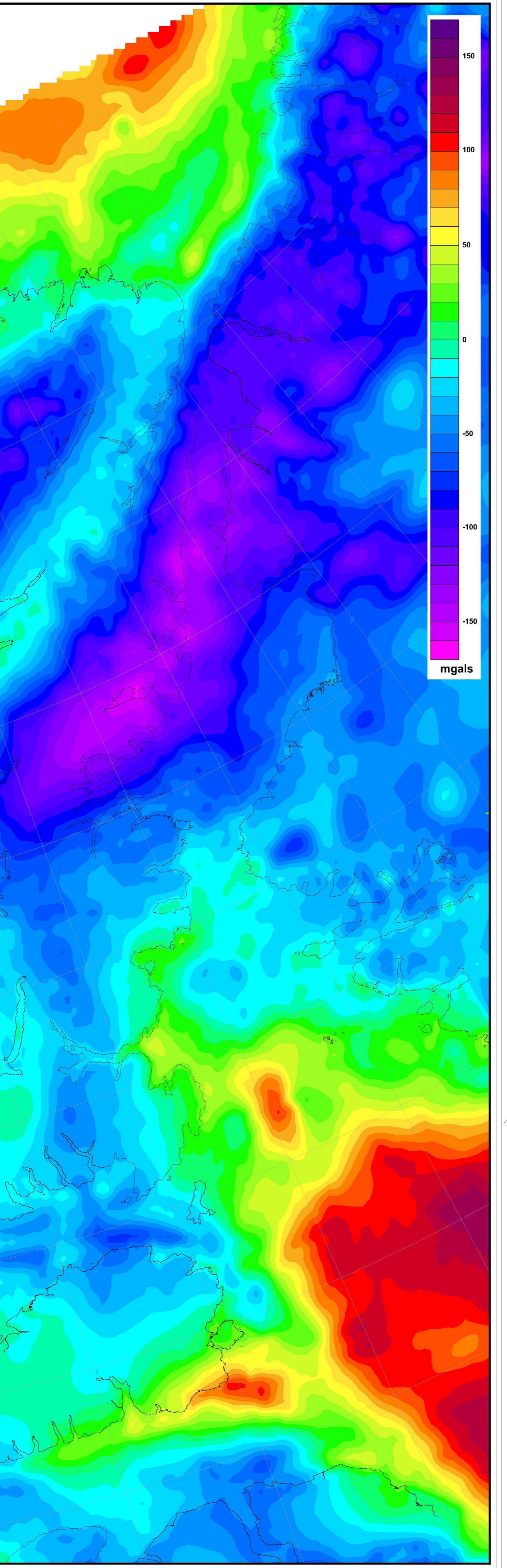
**Simplified Geology**



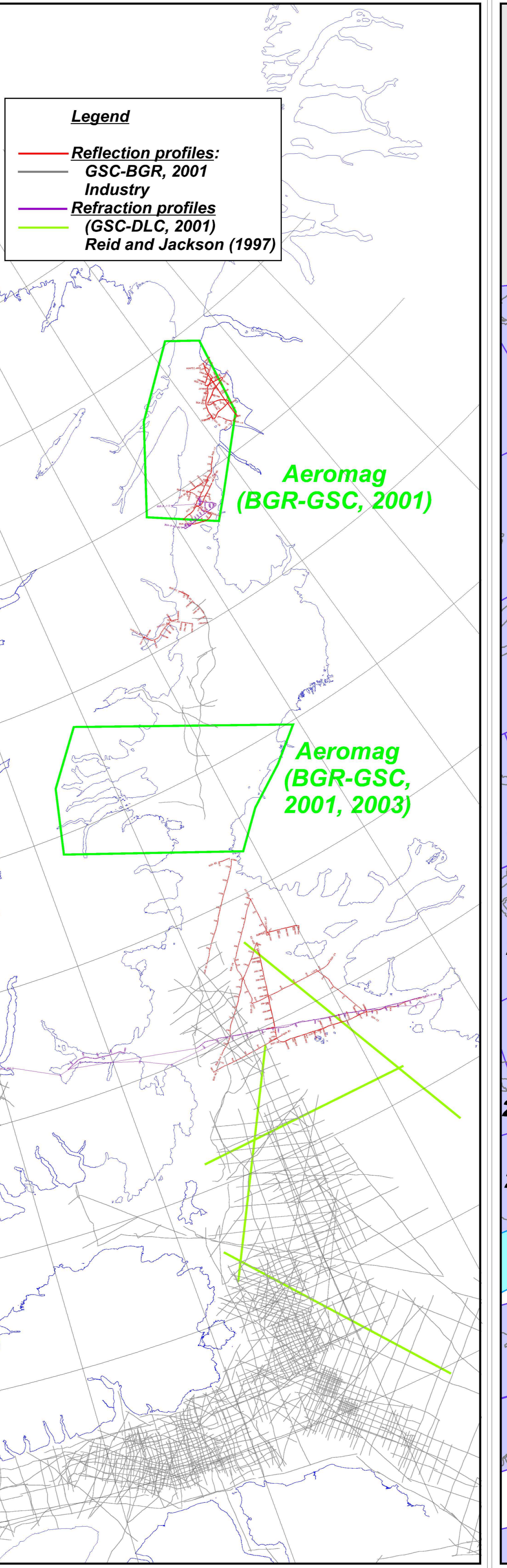
**Dyke swarms**



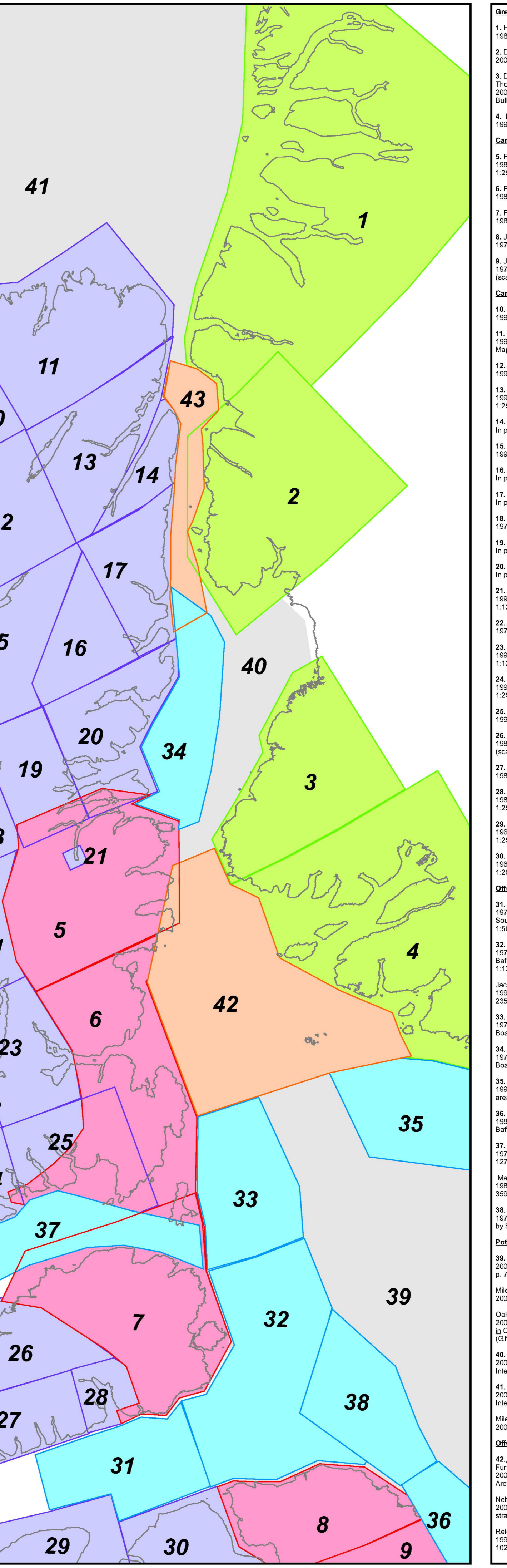
**Physiography (Topography & Bathymetry)**



**Bouguer gravity**



**Aeromagnetic surveys and seismic profiles (reflection and refraction)**



**Map sources**

**Greenland**

- Harrison, J.C., 1989. Geology, Nyboe Land, Cranshaws Geologica Undersege, Geological Map of Greenland, sheet 7 (scale 1:500,000).
- Damaske, P.R. and Carst, A.A., 2004. Geology, Hanshøi, Denmark, Cranshaws Geologica Undersege, sheet 8 (scale 1:500,000).
- Damaske, P.R., Frisch, T., Carst, A.A., Isakov, T.R., Ineson, J.R., Jensen, S.M., Pflug, S., Steinmark, L., Stouge, S., Thomsen, R., and van Dok, J.A.M., 2002. Preliminary geological map of northeast Greenland and northern Foulshof Land, Figure 2, Kane Basin, 1999. Geology of Greenland Bulletin, v. 186, p. 11-28 (scale ca. 1:760,000).
- Damaske, P.R., 1991. Geology, Thule, Cranshaws Geologica Undersege, Geological Map of Greenland, sheet 5 (scale 1:500,000).

**Canada, Proterozoic**

- Frisch, T., 1984. Geology, Prince of Wales Mountains, District of Franklin, Northwest Territories, Geological Survey of Canada Map 1572A (scale 1:200,000).
- Frisch, T., 1984. Geology, Mackenzie Inlet, District of Franklin, Northwest Territories, Geological Survey of Canada Map 1573A (scale 1:200,000).
- Frisch, T., 1984. Geology, Devon Ice Cap, District of Franklin, Northwest Territories, Geological Survey of Canada Map 1574A (scale 1:200,000).
- Jackson, G.D. and Davidson, A., 1974. Geology, Bylot Island, District of Franklin, Northwest Territories, Geological Survey of Canada Map 1397A (scale 1:250,000).
- Jackson, G.D. and Davidson, A., 1975. Geology, Bylot Island, District of Franklin, Northwest Territories, Geological Survey of Canada Map 1398A (scale 1:250,000).

**Canada, Phanerozoic**

- Truitt, W.P. and Mayr, U., 1996. Geology, McIlroy Inlet, District of Franklin, Northwest Territories, Geological Survey of Canada Map 1882A (scale 1:250,000).
- Mayr, U. and Truitt, W.P., 1996. Geology, Clements Markham Inlet-Robson Channel, District of Franklin, Northwest Territories, Geological Survey of Canada Map 1887A (scale 1:250,000).
- Truitt, W.P. and Mayr, U., 1996. Geology, Lady Franklin Bay, District of Franklin, Northwest Territories, Geological Survey of Canada Map 1887A (scale 1:250,000).
- Truitt, W.P. and Mayr, U., 1996. Geology, Lady Franklin Bay, District of Franklin, Northwest Territories, Geological Survey of Canada Map 1887A (scale 1:250,000).
- Harrison, J.C., Mayr, U., and Pugh, K., in press. Geology, Lady Franklin Bay, Ellesmere Island, Nunavut, Geological Survey of Canada Map 1887A (scale 1:250,000).
- Truitt, W.P., 1997. Geology, Greely Fjord, District of Franklin, Northwest Territories, Geological Survey of Canada Map 1888A (scale 1:250,000).
- Harrison, J.C. and de Freitas, T., in press. Geology, Agassiz Ice Cap, Ellesmere Island, Nunavut, Geological Survey of Canada Map 1888A (scale 1:250,000).
- Mayr, U., Harrison, J.C., and Pugh, K., in press. Geology, Kennedy Channel, Ellesmere Island, Nunavut, Geological Survey of Canada Map 1888A (scale 1:250,000).
- Thomsen, R., 1972. Geology, Carlin Fjord, District of Franklin, Northwest Territories, Geological Survey of Canada Map 1309A (scale 1:250,000).
- Mayr, U. and de Freitas, T., in press. Geology, Sawyer Bay, Ellesmere Island, Nunavut, Geological Survey of Canada Map 1887A (scale 1:250,000).
- de Freitas, T., Mayr, U., Harrison, J.C., Pugh, K., and Tessenohr, F., in press. Geology, Dobbie Bay, Ellesmere Island, Nunavut, Geological Survey of Canada Map 1887A (scale 1:250,000).
- Harrison, J.C., Thomsen, R., and de Freitas, T., 1991. Geology, Sverdrup Fjord, District of Franklin, Northwest Territories, Geological Survey of Canada Open File 2881 (scale 1:250,000).
- Kear, J.W. and Thomsen, R., 1972. Geology, Blomstrand Fjord, District of Franklin, Northwest Territories, Geological Survey of Canada Map 1312A (scale 1:250,000).
- Thomsen, R., Harrison, J.C., and de Freitas, T., 1991. Geology, Vardø Fjord, District of Franklin, Northwest Territories, Geological Survey of Canada Open File 2881 (scale 1:250,000).
- Mayr, U. and Okulich, A.V., 1994a. Geology, Baad Fjord-Carlin Strait, District of Franklin, Northwest Territories, Geological Survey of Canada Map 1840A (scale 1:250,000).
- Mayr, U. and Okulich, A.V., 1994b. Geology, Craig Harbor, District of Franklin, Northwest Territories, Geological Survey of Canada Map 1841A (scale 1:250,000).
- Thomsen, R. and Mayr, U., 1994. Geology, Bear Bay East and Lady Ann Strait, District of Franklin, Northwest Territories, Geological Survey of Canada Map 1813A (scale 1:250,000).
- Thomsen, R. and Mayr, U., 1994. Geology, Bear Bay East and Lady Ann Strait, District of Franklin, Northwest Territories, Geological Survey of Canada Map 1813A (scale 1:250,000).
- Thomsen, R. and Mayr, U., 1994. Geology, Dundas Harbour, District of Franklin, Northwest Territories, Geological Survey of Canada Map 1816A (scale 1:250,000).
- Blackadar, R.G., Davison, W.L., and Truitt, W.P., 1990a. Arctic Bay Cape Clarence Geology, District of Franklin, Northwest Territories, Geological Survey of Canada Map 1237A (scale 1:250,000).
- Blackadar, R.G., Davison, W.L., and Truitt, W.P., 1990b. Geology, Navy Board Inlet, District of Franklin, Northwest Territories, Geological Survey of Canada Map 1239A (scale 1:250,000).

**Offshore industry seismic data**

- Noranda Petroleum 1974. Seismic line map [of] Horizon C, Lancaster Sound, base [of] low velocity strata [in] Seismic Surveys in Parry Channel, Lancaster Sound and Wellington Channel, National Energy Board Assessment File Number 511-9-9 and 511-9-9-1-1 (8 sheets, scale 1:50,000).
- Jackson, H.R., Doherty, K., and Miller, F., 1992. A seismic reflection study of northern Baffin Bay: implications for tectonic evolution. Canadian Journal of Earth Sciences, v. 29, p. 233-249.
- Alvarado, J.L., 1974. Seismic basement [map] of Foul Geophysical Report on Marine Reflection Seismic Survey, North Baffin Bay, National Energy Board Assessment File Number 2-1-1 (1 sheet, scale 1:250,000).
- Randall, G.A. and Oakey, G.N., 1974. A seismic reflection study of the eastern margin of the Labrador Sea: a review [in] Geological Society of London, Special Publication 187, p. 77-105.
- Kear, C.E. and Bannett, D.L., 1973. Structural characteristics of some sedimentary basins in northern Baffin Bay, Canada. Journal of Earth Sciences, v. 10, p. 1267-1278.
- Maclean, B., Woodside, J.M., and Giroux, P., 1984. Geological and geophysical investigations in Jones Sound, District of Franklin, Northwest Territories, Canada, Paper 84-1A, p. 39-90.
- Blum, Robert, 1978. Preliminary time structure map on "Blue Horizon" 11000,000 ft Crustal Geophysical program report, covering marine seismic work done by Shell Canada Limited, August to September, 1978. National Energy Board Assessment File Number 37-5-12-159.

**Potential field surveys**

- Chapman, J.A. and Pugh, K.T.R., 2001. Development of the continental margin of the Labrador Sea: a review [in] Geological Society of London, Special Publication 187, p. 77-105.
- Mayr, U.F., 2000a. Gravity anomaly map [of] Canada. Geological Survey of Canada, Open File 3833 (scale 1:7,500,000).
- Olney, G.N. and Chalmers, J.A., 2005. A new model for the Paleogene motion of Greenland relative to North America: a re-evaluation of the plate geometry of Baffin Bay in the context of Cretaceous evolution and tectonic tectonics of the Baffin Bay - Nares Strait region of Arctic Canada and Greenland. In: Olney, G.N. and Chalmers, J.A., eds. Proceedings of the 4th International Conference on Arctic Margins, Dartmouth, Nova Scotia, 2005.
- Olney, G.N. and Damaska, D., 2003. Tectonic elements of the Hall Basin region of Nares Strait constrained by aeromagnetic data. Proceedings of the Fourth International Conference on Arctic Margins, Dartmouth, Nova Scotia.
- Damaska, D. and Olney, G.N., 2003. Tectonic elements of the Hall Basin region of Nares Strait constrained by aeromagnetic data. Proceedings of the Fourth International Conference on Arctic Margins, Dartmouth, Nova Scotia.
- Mayr, U.F., 2000b. Magnetic anomaly map [of] Canada. Geological Survey of Canada, Open File 3829 (scale 1:7,500,000).

**Offshore geophysics: BGR, GSC (2001)**

- 42-43. Frisch, T., Jackson, H.R., Dehler, S.A., and Reid, I.D., 2003. The crustal structure in Nares Strait derived from reflection seismic data. Proceedings of the Fourth International Conference on Arctic Margins, Dartmouth, Nova Scotia.
- Neben, S., Brent, T.A., Harrison, J.C., Tessenohr, F., and Jackson, H.R., 2003. New marine reflection seismic data in North Baffin Bay, Kane Basin and Hall Basin: subsurface constraints on structure and tectonics of the Nares Strait region. Proceedings of the Fourth International Conference on Arctic Margins, Dartmouth, Nova Scotia.
- Reid, I. and Jackson, H.R., 1997. Crustal structure of northern Baffin Bay: seismic reflection results and tectonic implications. Journal of Geophysical Research, v. 102, n. 91, p. 523-542.

**OPEN FILE DOSSIER PUBLIC 5278**

GeoScience Canada / Commission géologique du Canada

2008

Open file products are available through the GSC home page. Les documents publics sont disponibles sur le site web de la Commission géologique du Canada.

2008

Page 2 of 2 / FEUILLET 2 DE 2