

Table with 2 columns: PROCESSING SEQUENCE and DISPLAY PARAMETERS. Lists technical details for the M-2002 profile.

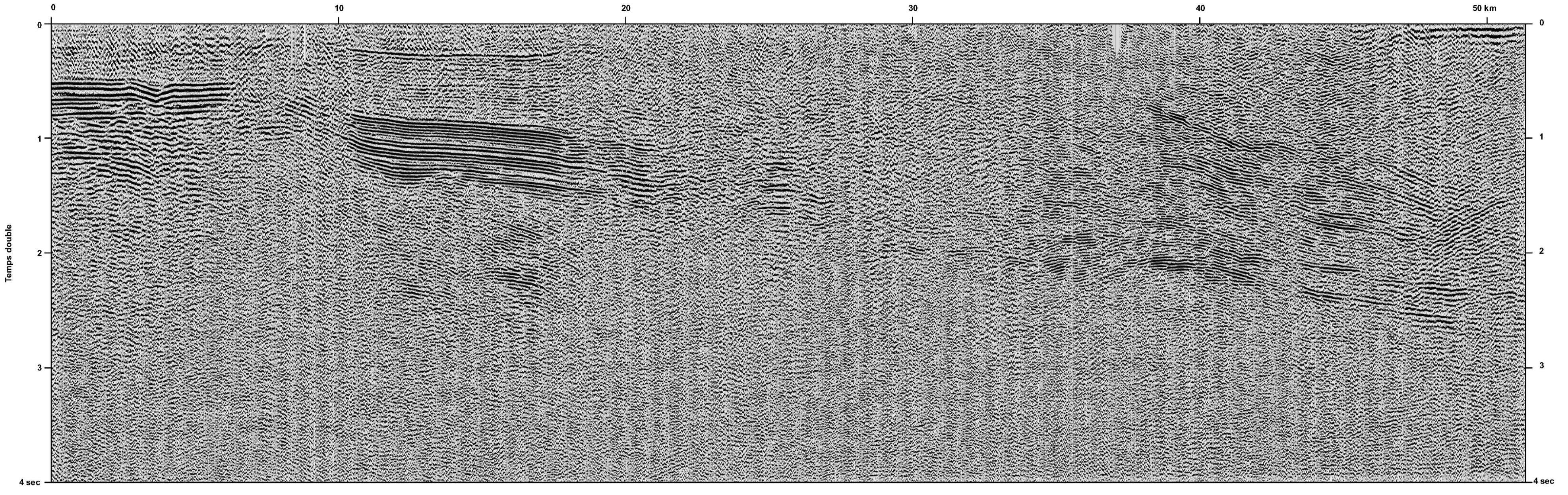


Table with 2 columns: PROCESSING SEQUENCE and DISPLAY PARAMETERS. Lists technical details for the M-2003 profile.

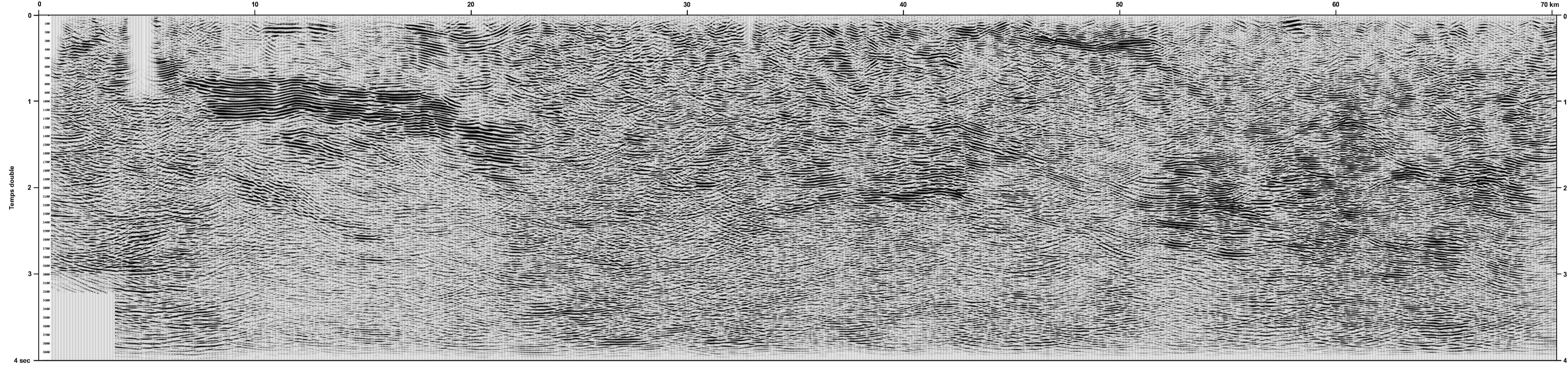


Table with 2 columns: PROCESSING SEQUENCE and DISPLAY PARAMETERS. Lists technical details for the M-2002 migrated profile.

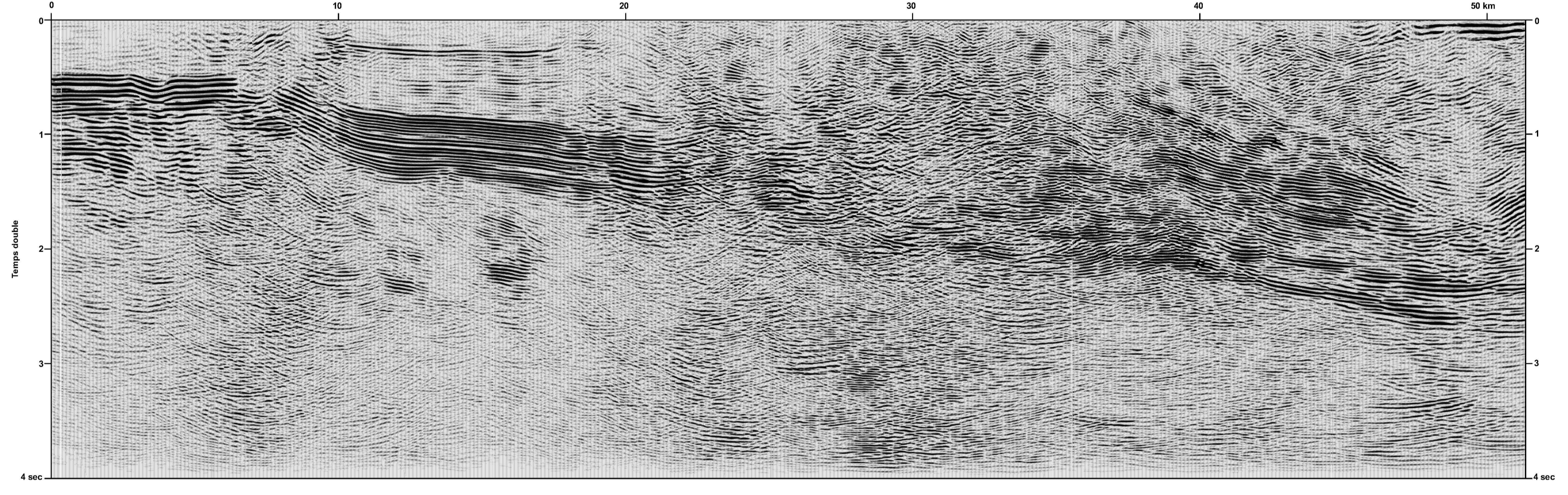


Table with 2 columns: PROCESSING SEQUENCE and DISPLAY PARAMETERS. Lists technical details for the M-2003 migrated profile.

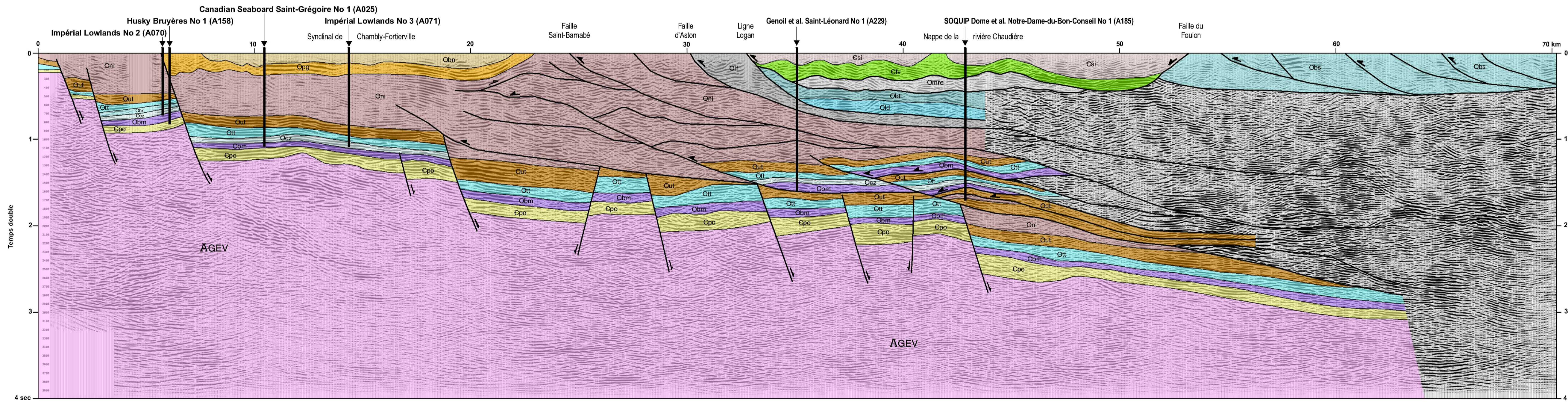


Table with 2 columns: PROCESSING SEQUENCE and DISPLAY PARAMETERS. Lists technical details for the M-2002 interpreted version.

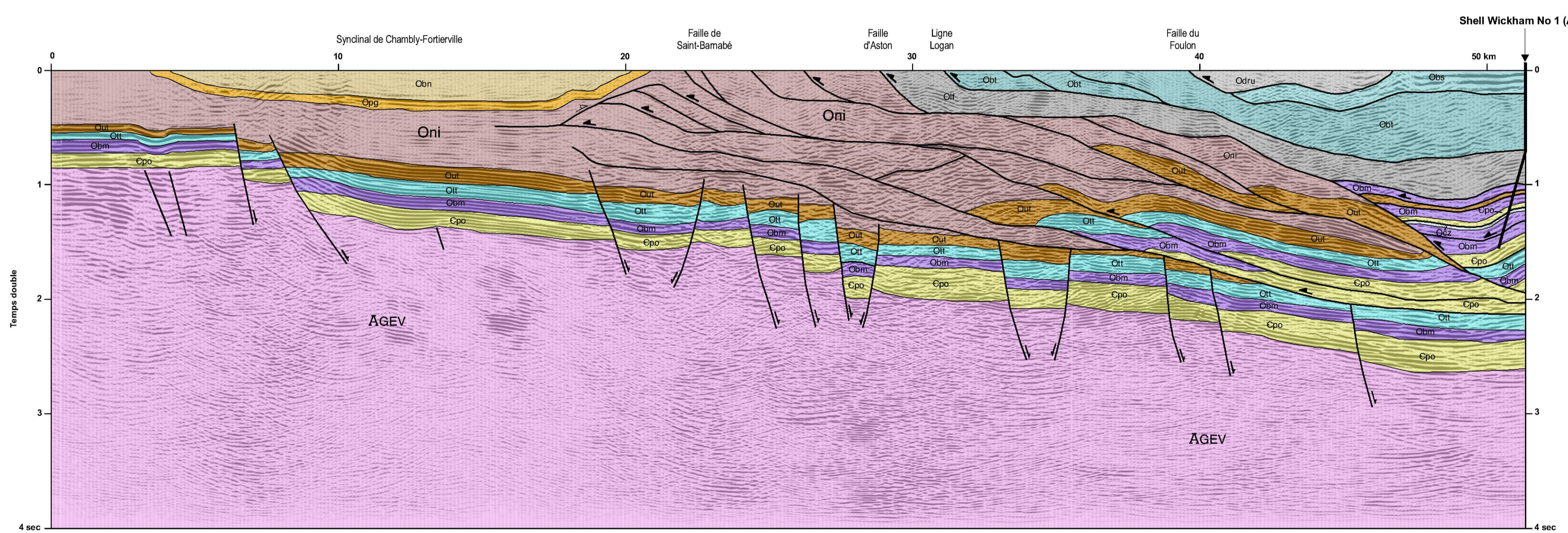
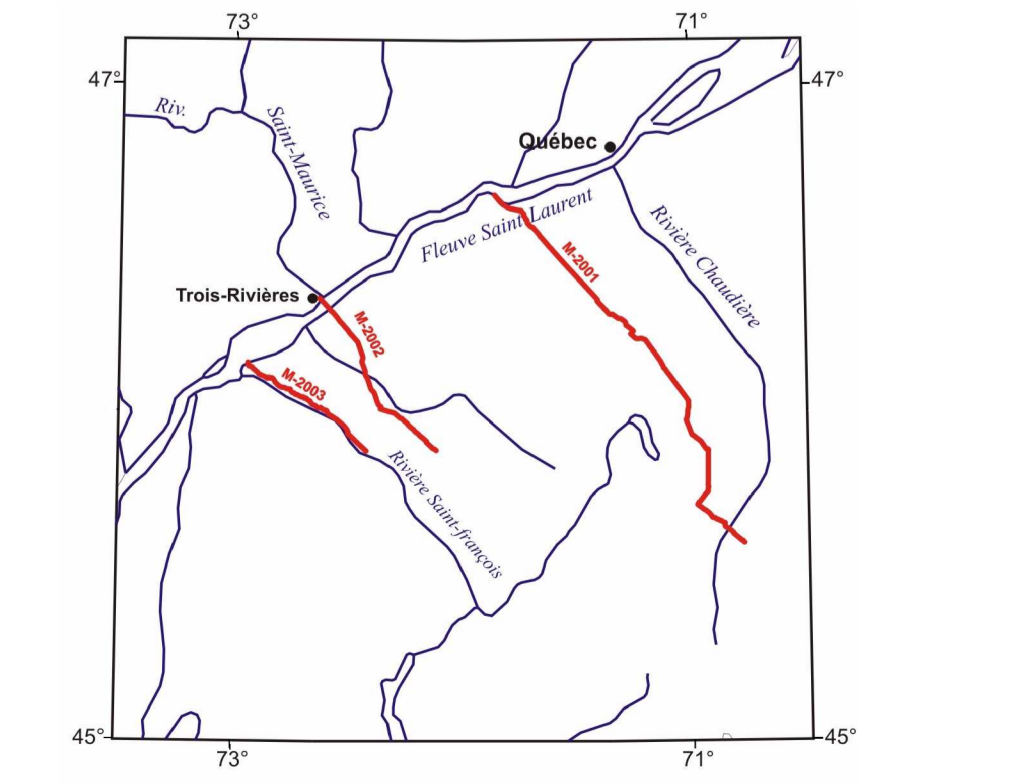


Table with 2 columns: PROCESSING SEQUENCE and DISPLAY PARAMETERS. Lists technical details for the M-2003 interpreted version.

Legend (Légende) defining geological units and symbols. Includes 'PROVINCE DE GRENVILLE', 'PLATE-FORME DU SAINT-LAURENT', 'ZONE DE HUMBER', and 'Mélange de la Rivière Etchemin'. Lists units like AGEV, Ohi, Ocl, Oclu, Oclm, Ocln, Oclp, Oclq, Oclr, Ocls, Oclt, Oclv, Oclw, Oclx, Ocly, Oclz, Oclaa, Oclab, Oclac, Oclad, Oclae, Oclaf, Oclag, Oclah, Oclai, Oclaj, Oclak, Oclal, Oclam, Oclan, Oclao, Oclap, Oclaq, Oclar, Oclas, Oclat, Oclav, Oclaw, Oclax, Oclay, Oclaz, Oclaa, Oclab, Oclac, Oclad, Oclae, Oclaf, Oclag, Oclah, Oclai, Oclaj, Oclak, Oclal, Oclam, Oclan, Oclao, Oclap, Oclaq, Oclar, Oclas, Oclat, Oclav, Oclaw, Oclax, Oclay, Oclaz.

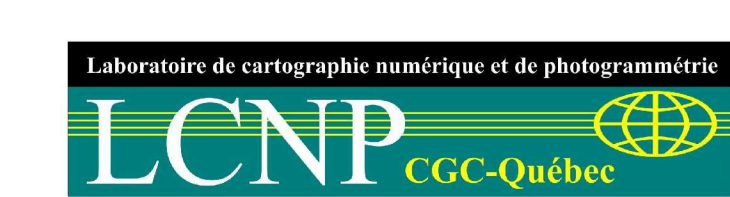


NOUVEAU REGARD SUR L'ARCHITECTURE DE LA PLATE-FORME DU SAINT-LAURENT ET DES APPALACHES DU SUD DU QUÉBEC PAR LE RETRAITEMENT DES PROFILS DE SISMIQUE RÉFLEXION M-2001, M-2002 ET M-2003

Sébastien Castonguay, Jim Dietrich, Randy Shinduke, Commission Géologique du Canada et Jean-Yves Laliberté, Ministère des Ressources naturelles et de la Faune du Québec

DOSSIER PUBLIC OPEN FILE 5328 COMMISSION GÉOLOGIQUE DU QUÉBEC GÉOLOGICAL SURVEY OF QUEBEC 2006

Feuille 2 de 2 Une notice descriptive accompagne ce feuillet



Notation bibliographique recommandée : Castonguay, S., Dietrich, J., Shinduke, R. et Laliberté, J.-Y. 2006 : Nouveau regard sur l'architecture de la Plate-forme du Saint-Laurent et des Appalaches du sud du Québec par le retraitement des profils de sismique réflexion M-2001, M-2002 et M-2003. Commission géologique du Canada, dossier public 5328, 19 p., 2 feuillets.