

This is a common map legend for the surficial geology of northern Alberta. Coloured legend blocks indicate map units that appear on this map. Not all map symbols shown in the legend necessarily appear on this map.

UNIT	UNIT NAME	DESCRIPTION AND GENESIS
------	-----------	-------------------------

QUATERNARY

HOLOCENE

- A** **ANTHROPOGENIC MATERIALS:** Culturally made or modified geological materials such that their physical properties (e.g., structure, cohesion, compaction) have been drastically altered.
- O** **ORGANIC DEPOSITS:** Undifferentiated peat (woody to fibrous muck) occurring in undifferentiated wetlands; commonly underlain by fine-grained, poorly drained glaciolacustrine deposits; includes marshes, swamps, bogs and fens.
- OB** **Big peat:** Occurs in a peatland with a fluctuating water table and commonly a raised surface; peatland surface is dominated by sphagnum mosses, heath shrubs and short, stunted trees.
- OF** **Fan peat:** Occurs in a peatland with water table at surface and slow internal drainage; peatland surface is dominated by sedges, with grasses and reeds near local pools, and is sparsely treed.
- C** **COLLUVIAL DEPOSITS:** Materials that have reached their present position as a result of direct, gravity-induced movement; commonly occurs as slope and slump deposits confined to valley slopes and floors; includes pre-existing bedrock, till, glaciolacustrine, glacioluvial and eolian sediments; generally poorly sorted.
- F** **FLUVIAL DEPOSITS:** Sediments transported and deposited by streams and rivers; synonymous with alluvial. Includes well-sorted stratified sand, gravel, silt, clay and organic sediments occurring in channel and overbank deposits (e.g., postglacial floodplains, terraces, fans and deltas).
- L** **LACUSTRINE DEPOSITS:** Sediments deposited in and adjacent to recent and modern lakes; offshore sand, silt and clay, minor organic deposits; littoral (nearshore) beaches and bars; sand, silt and minor gravel.
- E** **EOLIAN DEPOSITS:** Wind-deposited sediments; well-sorted, medium to fine-grained sand and minor silt (loess); generally massive to locally cross bedded or ripple laminated; includes both active and vegetated deposits.

PLEISTOCENE

- LG** **GLACIOLACUSTRINE DEPOSITS:** Primarily fine-grained, distal sediments deposited in or along the margins of glacial lakes, including sediments released by the melting of floating ice. Includes laminated (rhythmically bedded) to massive fine sand, silt and clay, and may contain ice-rafted stones.
- LGL** **Littoral and nearshore sediments:** Massive to stratified, well-sorted silty sand, pebbly sand and minor gravel; occurs as beaches, bars, spits and forest deltaic deposits deposited during regression and lowering of glacial lakes.
- FG** **GLACIOFLUVIAL DEPOSITS:** Sediments deposited by glacial meltwater streams as subaerial or subaqueous outwash. Includes sand and gravel, often stratified, minor silt, and may show evidence of ice melting (slumped structures). Features include meltwater channels, kettle holes, terraces and minor ice-contact sediments.
- FGI** **Ice-contact sediments:** Sediments deposited by glacial meltwater streams in direct contact with glacial ice, either in front of (kame terraces) or within (eskers, crevasse ridges) glacial ice. Includes massive to stratified, poor to moderately sorted, coarse sediments (predominantly pebble gravel and coarse sand, locally till) and may show evidence of ice melting (slumped structures).
- M** **MORAINES:** Nonsorted diamict (till) deposited directly by glacial ice consisting of a mixture of clay, silt, sand and minor pebbles, cobbles and boulders. Locally, this unit may contain blocks of bedrock, pre-existing stratified sediment and till, and lenses of glaciolacustrine and/or glacioluvial sediment.
- MS** **Stagnant ice moraine:** Material resulting from the collapse and lateral movement of englacial and supraglacial sediment in response to melting (ablation) of buried stagnant ice at the ice margin; sediment is mainly diamict, but locally includes stratified sediments of glaciolacustrine or glacioluvial origin. Characterized by low to high-relief hummocky topography.
- MT** **Ice-thrust moraine:** Terrain resulting from glacio-tectonic transport of originally subglacial material deposited by the glacier more or less intact; deposits may include syngenetic till, as well as masses of pre-existing till, stratified drift and/or bedrock. Characterized by high to moderate relief and features include hill-hole pairs and glacio-tectonic moraine ridges.
- MF** **Fluted moraine:** Glacially streamlined terrain; varies from alternating furrows and ridges to nearly equidimensional smoothed hills; all landforms parallel the local ice flow direction; includes flutes, drumlins and drumlinoids.

PRE-QUATERNARY

- FP** **PREGLACIAL FLUVIAL DEPOSITS:** Sediments transported and deposited by streams and rivers prior to glaciation. Includes sand and gravel deposits occurring in paleovalleys (i.e., preglacial floodplains, terraces, fans and deltas), ranging from middle Wisconsin to late Tertiary.
- RT** **UNCONSOLIDATED FLUVIAL GRAVELS:** Predominately well-sorted, quartzite and chert gravel and cobbles; Cordilleran source, Paleogene (Tertiary) to early Quaternary.
- R** **BEDROCK:** Undifferentiated; may include clastic sedimentary rock, shale, coal, carbonate and crystalline (Shield), kimberlite and/or coal.

SYMBOL LEGEND

- Permafrost; relic and/or active
- Thermokarst depression
- Landslide and active layer failure scar (small)
- Landslide and active layer failure scar (large)
- Eolian forms; dune ridges
- Beach or strandline
- Wave-cut bench
- Escarpment
- Meltwater channel (minor)
- Meltwater channel (minor, flow indicated)
- Meltwater channel (major)
- Meltwater channel (major, flow indicated)
- Crevasse filling
- Ice-contact slope
- Kettle
- Esker, direction of paleoflow unknown
- Esker, direction of paleoflow indicated
- Drumlinoid or streamlined landform
- Drumlinoid, down-ice flow indicated
- Buried drumlinoid or streamlined landform
- Minor moraine ridge
- Major moraine ridge
- Iceberg scour
- Ice thrust ridge
- Striation (direction unknown)
- Striation (direction known)
- Bedrock outcrop
- Gravel and/or sand pit
- Section of stratigraphic interest

BASEMAP LEGEND

- City/town
- Paved highway
- Gravel road - all season
- Unimproved road
- Trail
- River
- Lake
- UTM grid, Zone 11
- Contour, 10 metre interval

Index to adjacent sheets

GSC OF 5070 AGS Map 395	AGS Map 360 GSC OF 5183
84M	
GSC OF 5237 AGS Map 396	AGS Map 361 GSC OF 5184

UNIT NOTATION

Example: GLACIOLACUSTRINE plain



Textural Modifier

Textural characteristics may be applied to the terrain classification as a prefix based on field observations or by inference from distinctive genesis and/or morphology. When two modifiers are given, the second letter is the dominant texture, with the first letter indicating the secondary texture; i.e., so for sandy clay

- p = pebble
- g = gravel
- s = sand
- l = silt
- c = clay
- a = sand-silt-clay

GENETIC & GEOMORPHIC MODIFIERS

- c** **crevasse fill** ice-contact ridges; ice squeeze deposits; linear forms deposited by meltwater in stagnant ice
- d** **doughnut rings and ridges** circular hummocks with a central depression, plateau mounds and brain-like pattern ridges, and ridges
- e** **eroded** planar surface eroded by glacial meltwater, often capped by a boulder lag deposit and/or thin deposit of sand and gravel
- f** **fan** gently sloping fan-shaped mass of detrital debris
- g** **gullied** slopes dissected by modern ravines created by intermittent runoff
- h** **hummock** assemblage of approximately equivalent mounds and hollows; moderate to high relief (commonly greater than 2 m)
- k** **collapse** depression, including kettles, pitted morphology, thermokarst depressions, karst sinkholes
- m** **meander** sinuous curves, loops and oxbows produced as meltwater and modern streams shift their channel over time
- p** **plain** deposit greater than 2 m thick; commonly masks geomorphic pattern of underlying deposits; flat to gently rolling topography (commonly less than 2 m relief)
- r** **ridged** one or more parallel or subparallel, convex, linear morphological elements with a length-to-width ratio greater than 2; low to high relief
- s** **slumped** landslide blocks, slope failure debris
- t** **terrace** terrace bench cut by either meltwater or wave action; antipianation terrace, kame terrace
- u** **undulating** low-relief rolling terrain; swell and swale topography
- v** **veneer** thin mantle of unconsolidated material too thin to mask the minor irregularities of the surface of the underlying material; it ranges in thickness from 10 cm to 1 metre and may be discontinuous
- w** **washboard** low-relief transverse moraine ridges, usually formed from basal ice shearing
- y** **dissected** channelled or dissected by glacial meltwater flow; dissected terrain by Holocene fluvial activity
- z** **delta** lake delta; ice-contact delta

Complex

Where two or more classes of terrain are interspersed in a mosaic or repeating pattern on a scale too small to warrant meaningful differentiation, the proportion of each component in the combination is given in a two or three position designation set off by slashes denoting arbitrary percentage limits. For example,

- 'MplLgV' means the area is underlain by approximately 60% moraine plain and up to 40% glaciolacustrine veneer.
- 'MvLgVFGp' means at least 60% of the area is underlain by moraine veneer, with up to 40% glaciolacustrine veneer and less than 15% glacioluvial plain.
- 'LgV/M' means more than 60% of the area is underlain by a glaciolacustrine plain, with less than 15% moraine.

Stratigraphic Sequence

Where materials of different origins or textures are known to be superimposed or can be confidently inferred, the sequence is indicated in conventional order using vertical separators, such as:

- 'sLgV | M' Thin sandy glaciolacustrine sediment deposited on moraine plain

Transitional Association

Locally, two or more terrain units are juxtaposed by reason of related origin, temporal sequence or ambiguous geomorphic distinction. In the last case, both components may be present. Such situations are identified by a compound designation marked by a hyphen. Examples: 'FGzLgV' indicating ice-contact delta indistinguishable from glaciolacustrine delta, or 'FGzLgV' indicating ice-contact kame and kettle topography that blends with hummocky stagnant ice moraine.

Morphologic Overprint

Where a sequence of geomorphic processes has produced a multi-aspect or compound terrain fabric, the geomorphic modifier suffixes are appended in the inferred order of superposition. 'Mv' means a plain of till has been moulded into ridge forms and finally dissected by modern streams. 'FGp' means a glacioluvial plain has been discontinuously covered by ice-contact hummocks and ridges.

Acknowledgements:

Surficial mapping was completed in 2004 as an Alberta Geological Survey (AGS) and Geological Survey of Canada (GSC) collaborative contribution to NRD Project 4450 and the Quaternary mapping initiative under the Alberta Mineral Strategy. Additional ground-truthing and field mapping were conducted by Mark Fenton and John Pawlowicz. Ryan Peterson, Mark Tarpley, Rob Metchoyevich and Thomas Anikmoyevich assisted with fieldwork. Field visits by Laurence Andrashek and Rick Richardson offered useful discussion and insight into the glacial history of the region. Digital cartography and GIS were completed by Monica Price and GISmo Solutions Ltd. Base data provided by Spatial Data Warehouse Ltd.

References:

Edwards, W.A.D., Budney, H.D., Barzaniuk, T. and Butkovic, L. (2004). Sand and gravel deposits with aggregate potential, Bischo Lake, Alberta (NTS 84M). Alberta Energy and Utilities Board, EUB/AGS Map 310, scale 1:250 000.

Fox, J.C. (1986). Aggregate resources of the Bischo Lake map area, NTS 84M05-16; Alberta Resource Council, Map A84M05-16, scale 1:250 000.

Fox, J.C., Richardson, R.J.H. and Sham, P.C. (1987). Surficial geology of the Peace River - High Level Area, Alberta; Alberta Energy and Utilities Board, EUB/AGS Map 205, scale 1:500 000.

Geo-engineering (M.S.T.) Ltd. (1992). Ditchwall database for the Norman Wells to Zama oil pipeline volume III: summary of ditchwall database evaluation; Geological Survey of Canada, Open File Report 2540, 13 p.

Lemmen, D.L., Duk-Rodkin, A. and Bednarski, J.M. (1994). Late glacial drainage systems along the northwestern margin of the Laurentide Ice Sheet, Quaternary Science Reviews, v. 13, p. 805-828.

Mathews, W.H. (1980). Retreat of the last ice sheets in northeastern British Columbia and adjacent Alberta, Geological Survey of Canada, Bulletin 331, 22 p.

Paulen, R.C., Plouffe, A. and Smith, I.R. (2006). Surficial geology of the Beauty Lake area, Alberta (NTS 84MNE); Alberta Energy and Utilities Board, EUB/AGS Map 360 and Geological Survey of Canada, Open File 5183, scale 1:100 000.

Plouffe, A., Paulen, R.C. and Smith, I.R. (2006). Surficial geology, Thinshale Creek, Alberta (NTS 84MNV); Geological Survey of Canada, Open File 5070 and Alberta Energy and Utilities Board, EUB/AGS Map 395 scale 1:100 000.

Richardson, R.J.H. (1985). Aggregate resources of the Bischo Lake map area, NTS 84M01-04; Alberta Resource Council, Map A84M01-04, scale 1:250 000.

Smith, I.R., Paulen, R.C., Plouffe, A., Kowalchuk, C.J. and Peterson, R. (2005). Surficial mapping and aggregate resource assessment in northwest Alberta; in Summary of Activities 2005, British Columbia Ministry of Energy and Mines, p. 80-95.

Smith, I.R., Plouffe, A. and Paulen, R.C. (2006). Surficial geology, Mega River, Alberta (NTS 84M/SW); Geological Survey of Canada, Open File 5237 and Alberta Energy and Utilities Board, EUB/AGS Map 396, scale 1:100 000.

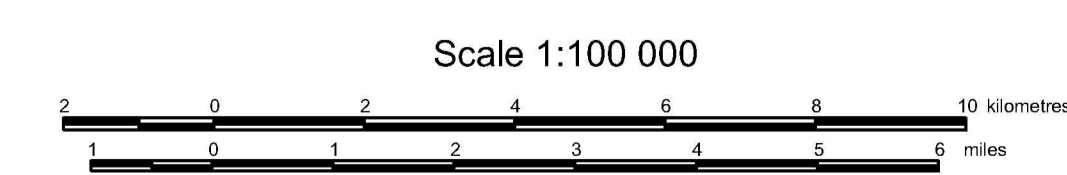
Published 2006
Copies of this map may be obtained from:
Information Sales Office
Alberta Geological Survey
Telephone: (780) 422-3767
Available at www.ags.gov.ab.ca



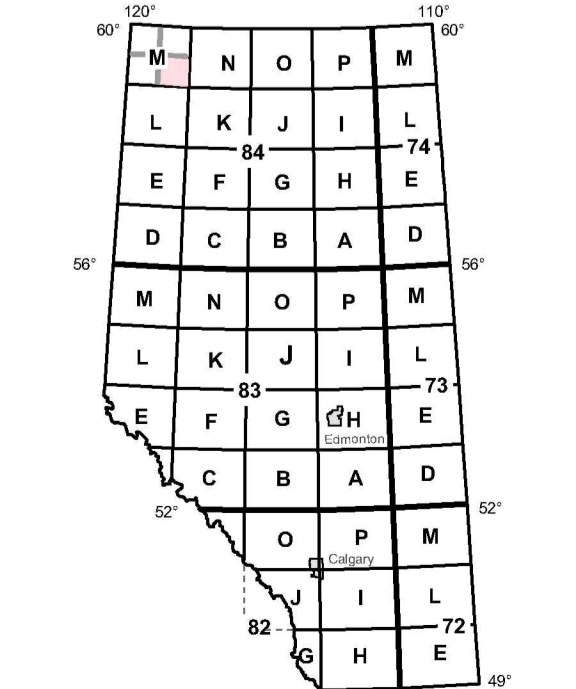
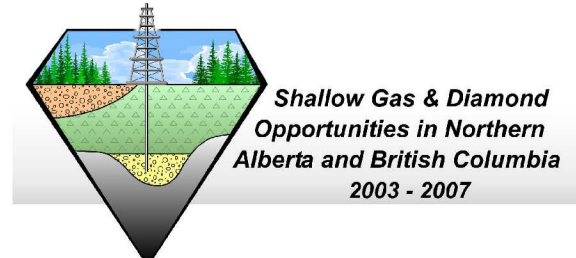
AGS Map 361
GSC Open File 5184

Surficial Geology of the Zama City Area, Alberta (NTS 84M/SE)

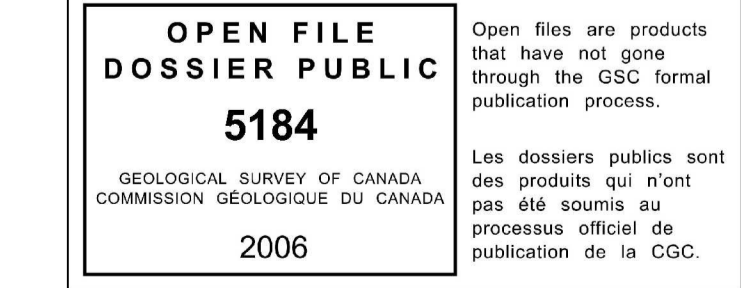
Geology by: R.C. Paulen, C.J. Kowalchuk, A. Plouffe, B.C. Ward and I.R. Smith



Projection: Universal Transverse Mercator
Datum: North American Datum, 1983



GSC OF 5070 AGS Map 395	AGS Map 360 GSC OF 5183
84M	
GSC OF 5237 AGS Map 396	AGS Map 361 GSC OF 5184



Recommended reference format:
Paulen, R.C., Kowalchuk, C.J., Plouffe, A., Ward, B.C. and Smith, I.R. (2006). Surficial geology of the Zama City area, Alberta (NTS 84M/SE); Alberta Energy and Utilities Board, EUB/AGS Map 361 and Geological Survey of Canada, Open File 5184, scale 1:100 000.