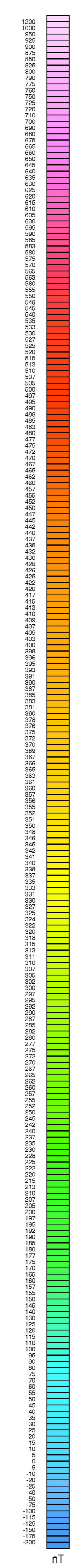
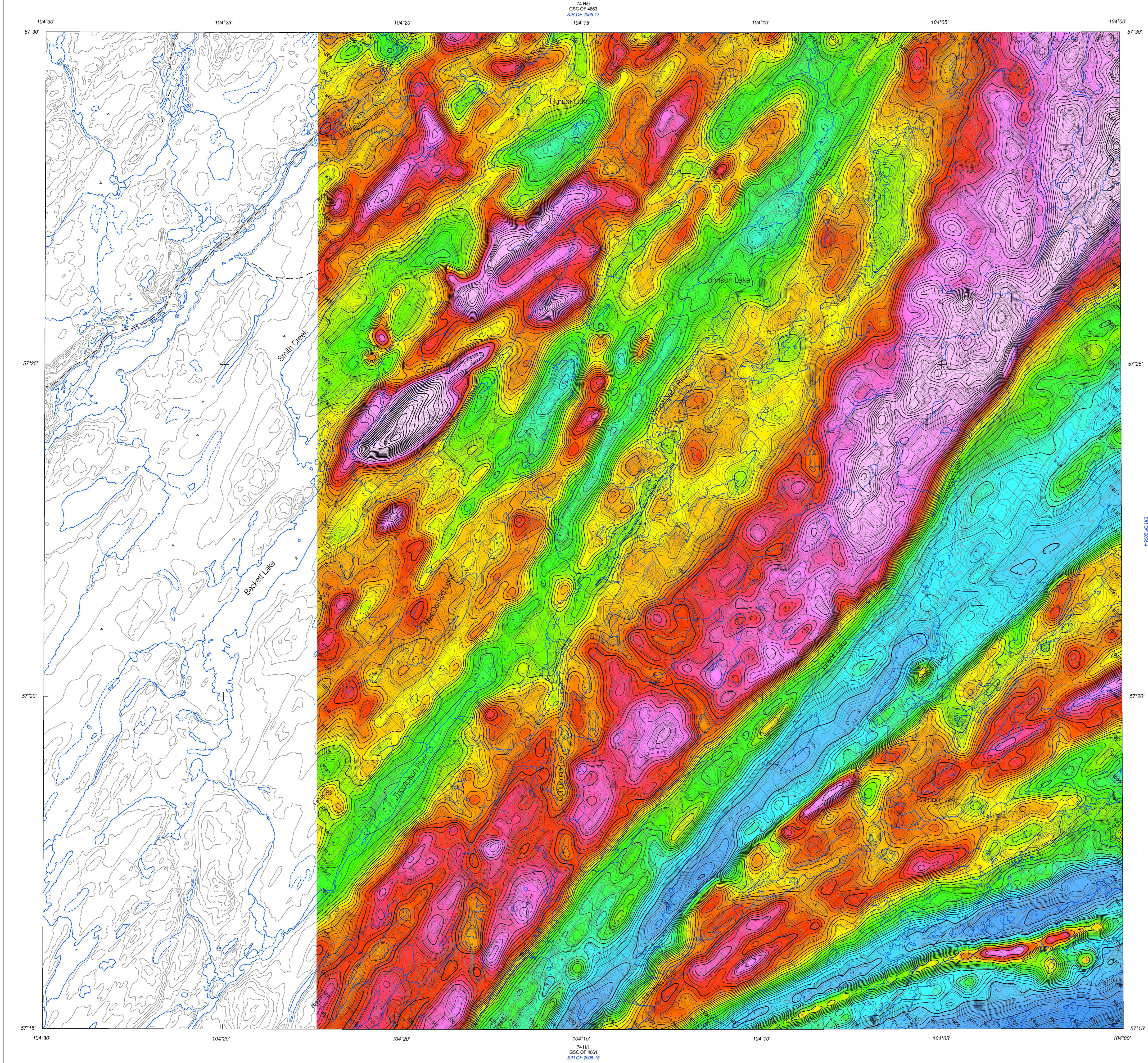




35 149
GSC OF 4863
SR OF 2005-17



PETER LAKE and WOLLASTON LAKE AREAS, SASKATCHEWAN

In 2004, Fugro Airborne Surveys completed a multi-sensor airborne geophysical survey of the Peter Lake and Wollaston Lake areas, Saskatchewan, for the Geological Survey of Canada and Saskatchewan Industry and Resources. The purpose of the survey was to obtain quantitative gamma-ray spectrometric and aeromagnetic data. The survey was flown over two seasons, from August 31 to September 29, 2003 and July 15 to September 30, 2004 using Cessna Grand Caravan 441B aircraft @ CNCA.

Gamma-ray Spectrometric Data

The airborne gamma-ray spectrometric measurements were made with an Egagranium CR300 gamma-ray spectrometer using fifteen 102 x 102 x 406 mm NaI (Tl) crystals. The main detector array consisted of twelve crystals (total volume 50.4 litres). Three crystals (total volume 12.6 litres), shielded by the main array, were used to detect variations in background radiation caused by atmospheric radon. The system constantly monitored the natural thorium peak for each crystal, and using a Gaussian least-squares algorithm, adjusted the gain for each crystal.

Potassium is measured directly from the 1460 keV gamma-ray photons emitted by ⁴⁰K, whereas uranium and thorium are measured indirectly from gamma-ray photons emitted by daughter products (²¹⁴Pb for uranium and ²⁰⁸Tl for thorium). Although these daughters are far denser than their respective parent chains, they are assumed to be in equilibrium with their parents; thus gamma-ray spectrometric measurements of uranium and thorium are referred to as equivalent uranium and equivalent thorium, i.e. eU and eTh. The energy windows used to measure potassium, uranium and thorium are:

- Potassium (40K) 1370 - 1570 keV
- Uranium (238U) 1860 - 1860 keV
- Thorium (232Th) 2410 - 2810 keV

Gamma-ray spectra were recorded at one-second intervals at a planned terrain clearance of 125 m and an air speed of 210 km/h. Noise Adjusted Singular Value Decomposition (NASVD) analysis was carried out on the full spectrum 256 channel data to reduce statistical noise in the windowed data. During processing, the spectra were energy calibrated, and counts were accumulated into the windows described above. Counts from the radon isotopes were recorded in a 1860 - 1860 keV window and radiation at energies greater than 3000 keV was recorded in the cosmic window. The window counts were corrected for dead time, and for background activity from cosmic radiation, the radioactivity of the aircraft and atmospheric radon decay products. The window data were then corrected for spectral scattering in the ground, air and detectors. Corrections for deviations of altitude from the planned terrain clearance and for variations in temperature and pressure were made prior to conversion to ground concentrations of potassium, uranium and thorium, using factors determined from flights over a calibration range near Ottawa.

- Potassium 90.5 cps/μg
- Uranium 11.4 cps/ppm
- Thorium 2.7 cps/ppm

Corrected data were filtered and interpolated to a 100 m grid for the 1:250 000 scale map and to a 50 m grid for the 1:50 000 scale map. The results of an airborne gamma-ray spectrometric survey represent the average surface concentrations that are influenced by varying amounts of organic vegetation, vegetation cover, soil moisture and surface water. As a result the measured concentrations are usually lower than the actual bedrock concentration. The total air absorbed dose rate in nanograys per hour was produced from measured counts between 400 and 2810 keV.

Magnetic Data

The Grand Caravan aircraft was equipped with a Scintrex CS-2 cesium vapour magnetic sensor mounted in a sledge to the rear of the aircraft. The system recorded readings every 0.1 seconds with a noise level of less than 0.01 nT. Magnetic interference caused by aircraft maneuvers were compensated using an RMS AAC2II Magnetic compensator. Diurnal variations were recorded using a Fugro CF-1000 magnetic compensator.

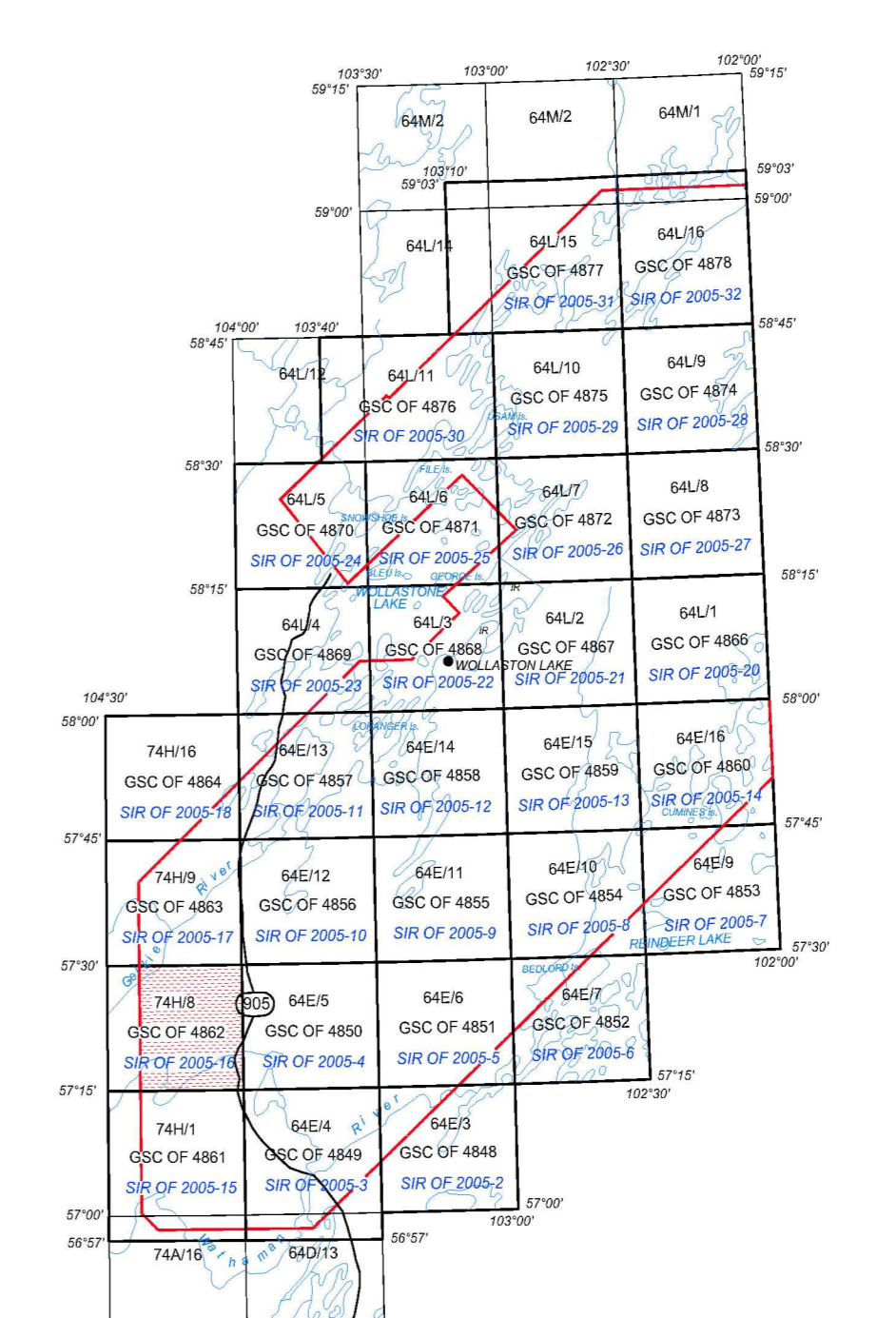
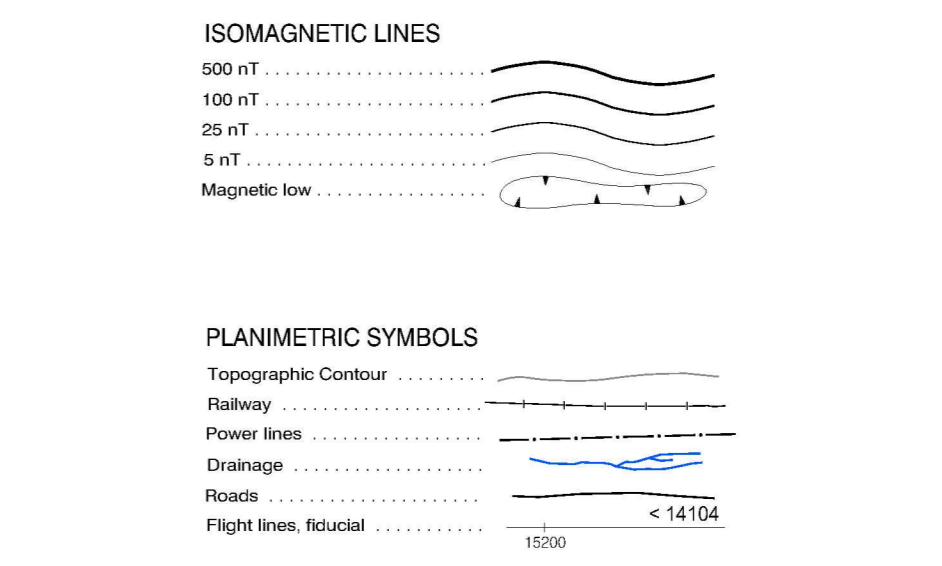
After editing the survey data, low pass filtered diurnal readings were subtracted from each unfiltered aeromagnetic reading. The intersections of traverse and control lines were determined and the differences in the magnetic values were computed, analyzed and manually verified to obtain the leveling corrections. The International Geomagnetic Reference Field was calculated and removed using a fixed data (20040615) and an altitude of 545 m for each data point. The corrected magnetic data was interpolated to a 100 m grid using a minimum curvature algorithm. The final vertical derivative grid was calculated from the corrected total magnetic intensity grid using a FFT based frequency domain filtering algorithm.

Positional Data

The 400 m spaced survey lines were oriented southeast - northwest and 4000 m spaced control lines were oriented southeast - northeast. Survey and control line positions and elevations were pre-planned using G.S.C. Smooth Drape software. Positional data were recorded using a Novatel Posipak KHR60101, GPS ground station data were combined with ground GPS data to produce differentially corrected positional data with an accuracy of 2 to 3 m.

Data Presentation

Colour levels and contours were calculated for each grid and combined with map surround information to create postscript plot files, which were plotted using Fugro's HP DesignJet colour plotters.



NATIONAL TOPOGRAPHICAL SYSTEM REFERENCE AND GEOPHYSICAL MAP INDEX

Recommended citation:
Ford, K.L., Carson, J.M., Dumont, R., Polvin, J., Shives, R.B.K., Detanay, G., and Stimson, W.
2005. Geophysical Series - NTS 74H/8 - Beckett Lake, Saskatchewan.
Geological Survey of Canada Open file 4862.
Saskatchewan Industry and Resources Open file 2005-16
Scale 1:50 000

This airborne geophysical survey and the production of this map were funded by the Government of Saskatchewan's Mineral Exploration Incentive Program

GEOPHYSICAL SERIES - 74H/8 - BECKETT LAKE
SASKATCHEWAN
MAGNETIC ANOMALY MAP, RESIDUAL TOTAL FIELD

Scale 1:50 000 - Échelle 1/50 000



NAD83 / UTM zone 18W

Universal Transverse Mercator Projection
North Magnetic Pole Location 1983
© Her Majesty the Queen in Right of Canada 2005
© Sa Majesté la Reine du chef du Canada 2005
Digital topographic base information provided by Saskatchewan Industry and Resources.

OPEN FILE
DOSSIER PUBLIC
4862
2005
SHEET 9 OF 10
FEUILLE 9 OF 10

SASKATCHEWAN
INDUSTRY AND
RESOURCES
OPEN FILE
2005-16
SHEET 9 OF 10



Natural Resources Canada / Ressources naturelles Canada



MAP LOCATION - LOCALISATION DE LA CARTE

MAGNETIC ANOMALY MAP, RESIDUAL TOTAL FIELD

BECKETT LAKE
SASKATCHEWAN

NTS 74H/8