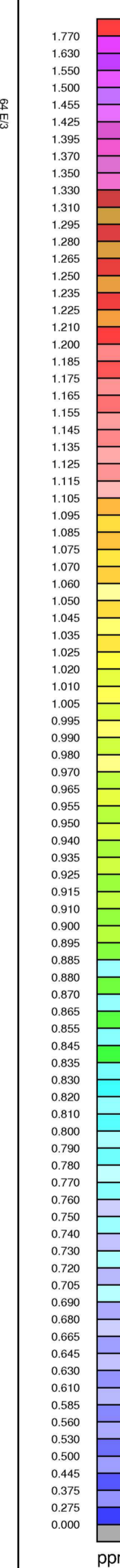
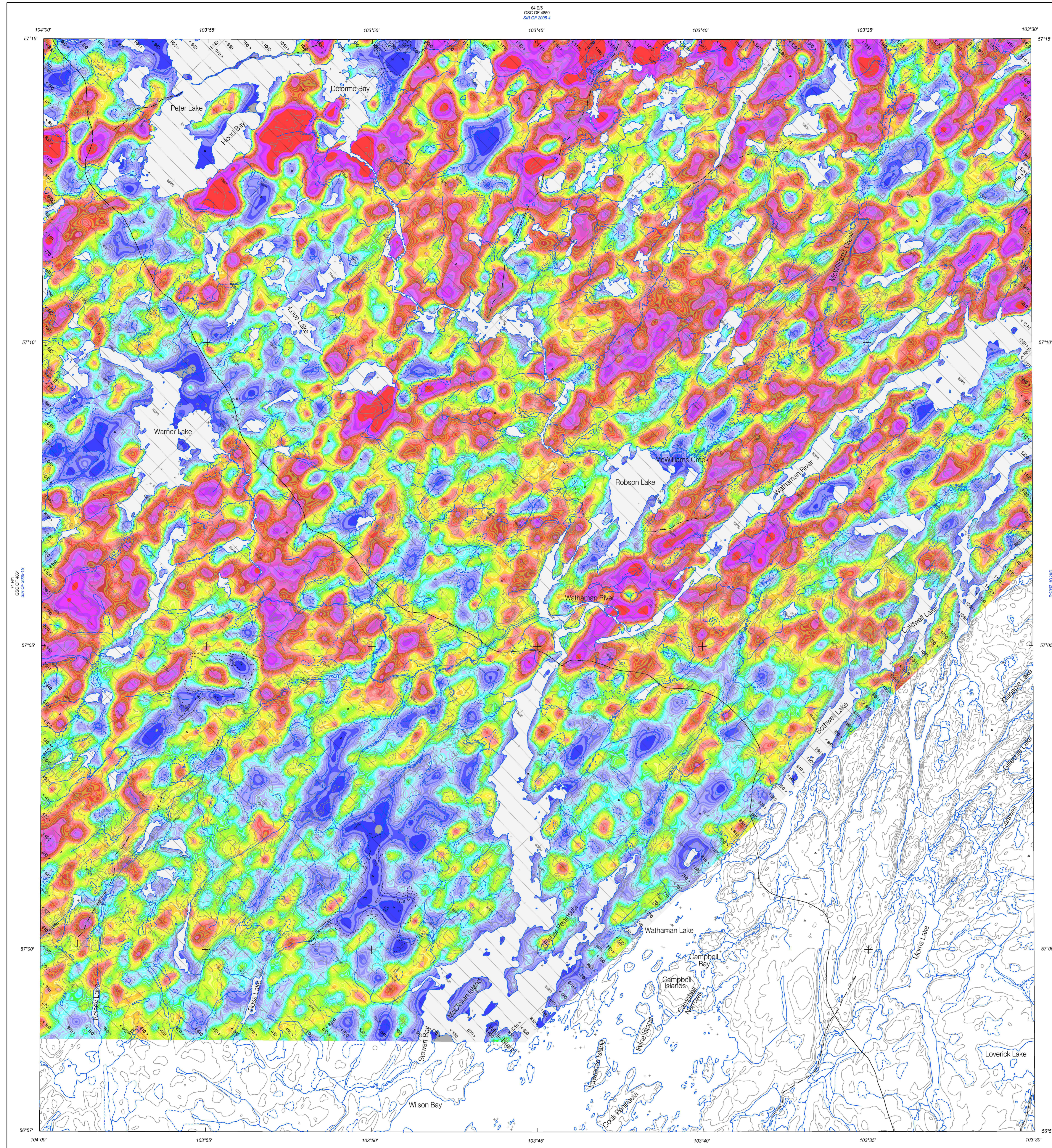




64E/4
GSC OF 4849
SR OF 2005-3



PLANIMETRIC SYMBOLS

Topographic Contour
Railway
Power Line
Discharge
Roads
Flight Lines, Horizontal



NATIONAL TOPOGRAPHICAL SYSTEM REFERENCE AND GEOLOGICAL MAP INDEX

64E/1	64E/2	64E/3	64E/4	64E/5
64E/6	64E/7	64E/8	64E/9	64E/10
64E/11	64E/12	64E/13	64E/14	64E/15
64E/16	64E/17	64E/18	64E/19	64E/20
64E/21	64E/22	64E/23	64E/24	64E/25
64E/26	64E/27	64E/28	64E/29	64E/30
64E/31	64E/32	64E/33	64E/34	64E/35
64E/36	64E/37	64E/38	64E/39	64E/40
64E/41	64E/42	64E/43	64E/44	64E/45
64E/46	64E/47	64E/48	64E/49	64E/50

Recommended citation:
Ford, K.L., Cameron, J.M., Dumont, R., Pothin, J., Shives, R.B.K., Delaney, G., and Blomson, W.
2005. Geophysical Series 64E/4 - Robson Lake, Saskatchewan.
Geological Survey of Canada Open File 4849.
Saskatchewan Industry and Resources Open File 2005-3
Scale 1:50 000

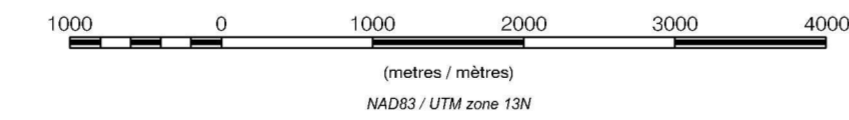
This airborne geophysical survey and the production of this map were funded by the Government of Saskatchewan's Mineral Exploration Incentive Program.



**GEOPHYSICAL SERIES - 64E/4 - ROBSON LAKE
SASKATCHEWAN**

URANIUM MAP

Scale 1:50 000 - Echelle 1/50 000



UNIVERSITY OF TORONTO LIBRARY
North American Datum 1983
© Her Majesty the Queen in Right of Canada 2005
Digitized topographic base information provided by Saskatchewan Industry and Resources.

OPEN FILE DOSSIER PUBLIC 4849	Open file are products that have not gone through the GSC formal publication process.	SASKATCHEWAN INDUSTRY and RESOURCES
2005	Les documents non publiés ne sont pas soumis au processus officiel de publication de la GSC.	OPEN FILE 2005-3
SHEET 3 OF 10 FEUILLE 3 OF 10		SHEET 3 OF 10

**URANIUM MAP
ROBSON LAKE
SASKATCHEWAN
NTS 64E/4**