

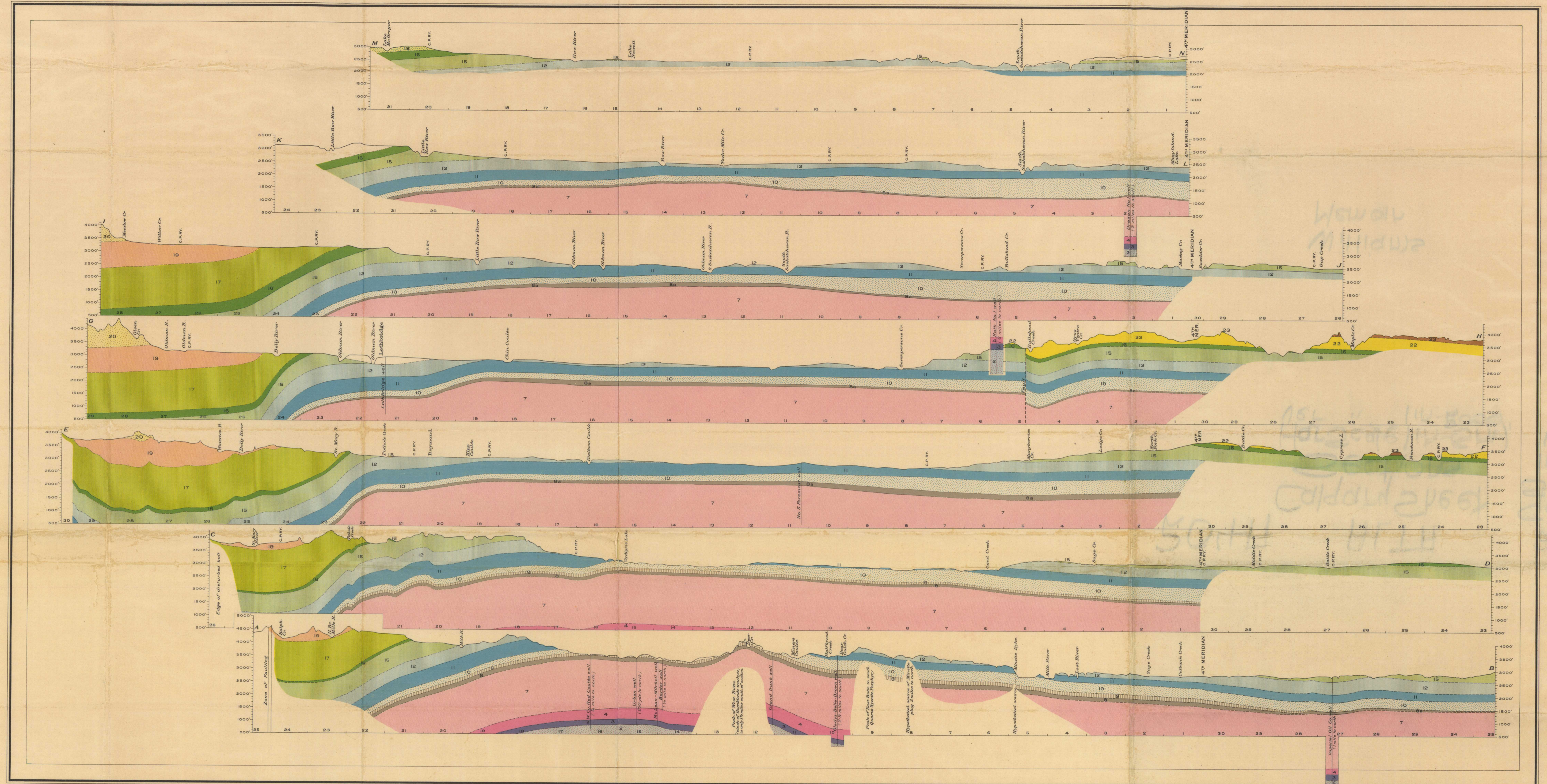
LEGEND

- TERTIARY**
- OLIGOCENE**
- 23 CYPRESS HILLS
- Eocene**
- 20 PORCUPINE HILLS
 - 19 WILLOW CREEK
- 21 PASKAPOO
- NOTE—The Eocene, Kishinoue in Flathead river valley, B.C., at the International Boundary, is shown by colour (21) and symbol (24). Oligocene (?) strata east of Drumheller are shown by colour (23) and symbol (25).
- 22 RAVENSCRAG, WHITE MUD, AND ESTEVAN
- MESOZOIC**
- CRETACEOUS**
- 17 ST. MARY RIVER
 - 16 FOX HILLS
 - 15 BEARPAW
 - 12 BELLY RIVER: PALE BEDS
 - 11 BELLY RIVER: FOREMOST
 - 10 PAKOWKI
 - 9 UPPER MILK RIVER
 - 8 LOWER MILK RIVER (on the sections, (8) is undivided Milk River)
 - 7 COLORADO SHALE (in places with Montana)
 - 6 CROWNSNEST VOLCANICS
 - 5 BLAIRMORE
 - 4 KOOTENAY (on the sections, (4) is undivided Kootenay and Blairmore)
- 13
- 14 ALLISON
- JURASSIC**
- 3 FERNIE (on the sections, (3) is undivided Jurassic)
- PRECAMBRIAN PALEOZOIC**
- 2 Not subdivided (includes Triassic)
 - 1 Not subdivided
- Geological boundary (defined)
- Geological boundary (approximate)

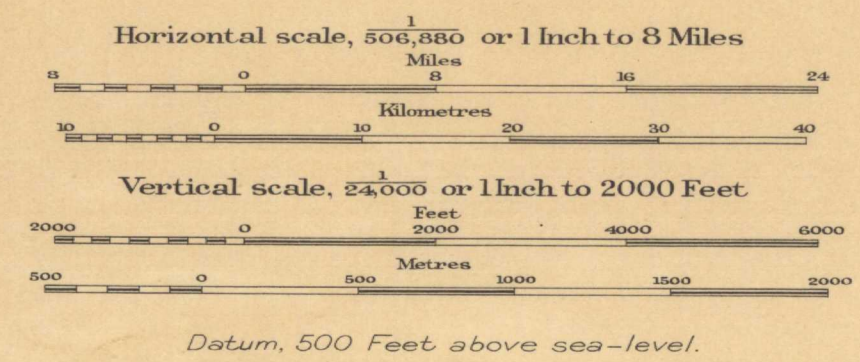
SOURCES OF INFORMATION
Geology by M.Y. Williams, W.S. Dyer, E.J. Whittaker, and P.S. Warren, 1923-1926.

NOTE
The sections (A,B,C,D,E,F,G,H,I,J,K,L,M,N) are along west to east lines and located 16 Miles apart northward from the International Boundary.

Numbers along bases of sections, extending from east to west, indicate land ranges and are referred to Third and Fourth meridians, respectively.



SECTIONS SUPPLEMENTING MAP 204A, CALGARY SHEET, ALBERTA



NOT TO BE TAKEN FROM LIBRARY
NE PAS SORTIR DE LA BIBLIOTHEQUE

(SECTIONS) 204A