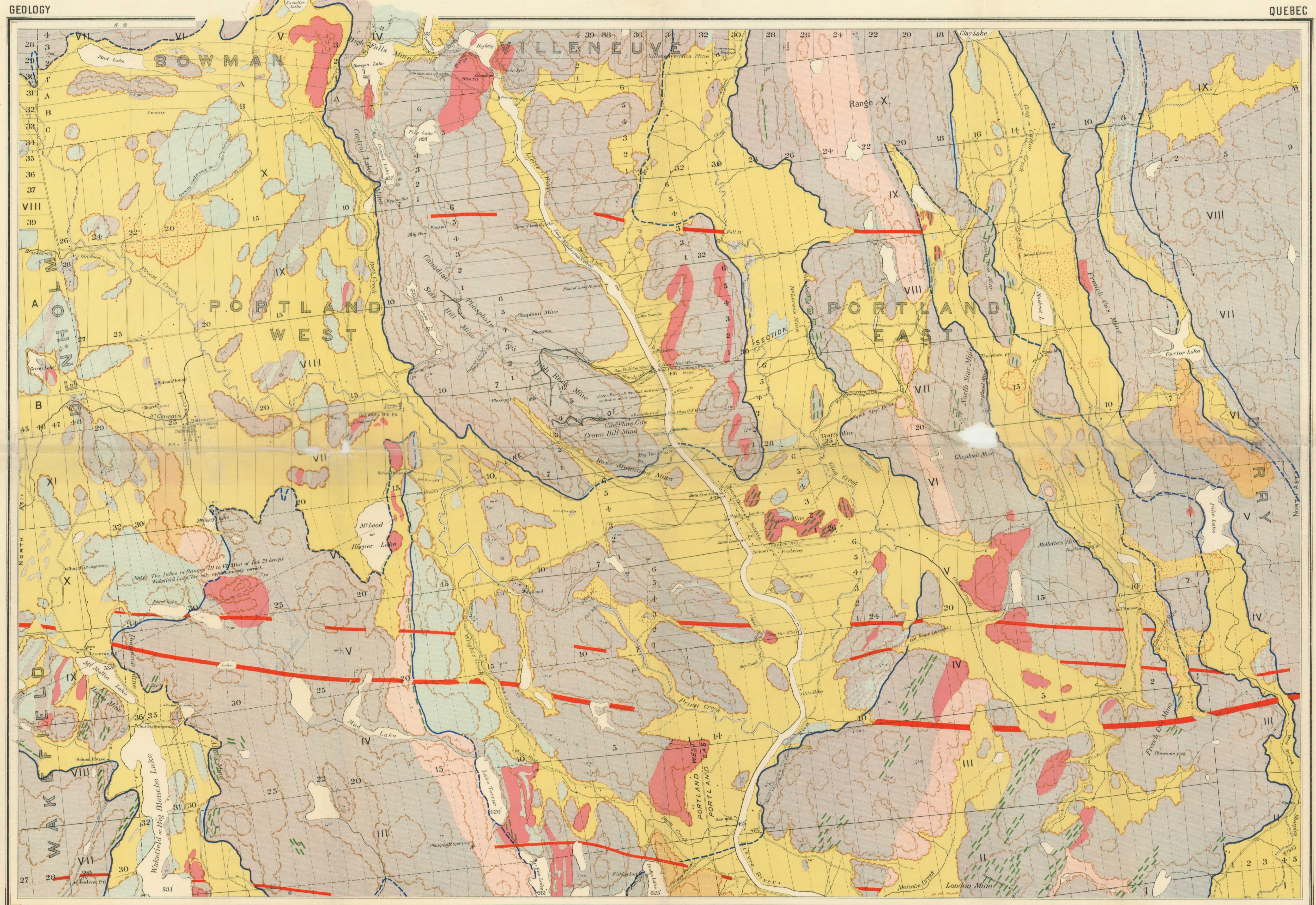


Cross-Section along Line A B



- Legend**
- PLEISTOCENE**
- Worn gravels and sands with boulders
 - Clay and sands
- PRE-CAMBRIAN**
Grenville Series
- Green, banded or banded
 - Crystalline limestone
 - Green, massive
 - Zones or bands of pyroxenite
 - Boundaries of limestone belts
- Igneous Intrusive**
- Granite and other acidic rocks
 - Intermediate and basic rocks
 - Dike-like
- Geological boundaries**
- Ditto undefined
 - Strike and dip
 - Vertical strata
 - Glacial striae
- Contours**
- 553 Heights in feet above sea-level
 - Contours approximate only
- Mineral Occurrences**
- Apulite
 - Niagara
 - Graphite
 - Feldspar
 - Asbestos

NOTES.

Pleistocene.
The worn gravels and sands, with boulders appear to be of glacial origin and are in places in situ. They are in places in situ and are in places in situ. They are in places in situ and are in places in situ.

Grenville Series.
The banded or banded green series widely in composition. It is often highly crystalline and usually contains a high percentage of quartz. It is often highly crystalline and usually contains a high percentage of quartz. It is often highly crystalline and usually contains a high percentage of quartz.

Igneous Intrusives.
The granite and other acidic rocks contain much feldspar, usually red or pink in color. In single exposures they are seen in various directions, each of different composition, but they are in places in situ and are in places in situ.

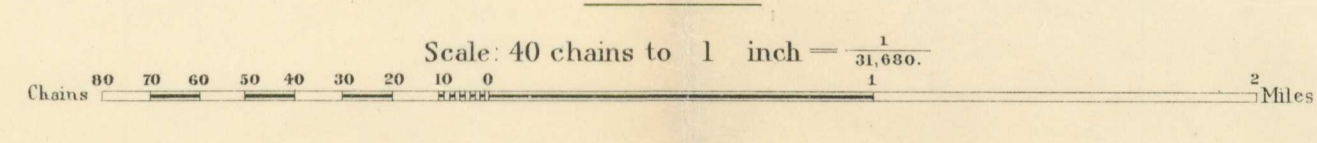
C.O. Soudan, Geographer and Chief Draughtsman.
O.E. Prud'homme and G. Atken, Draughtsman.

THE LIÈVRE RIVER VALLEY

Comprising portions of the Townships of
BUCKINGHAM, PORTLAND, TEMPLETON, Etc.
OTTAWA COUNTY, QUE.

SOURCES OF INFORMATION

Traverse and chain surveys by James White, 1889.
Supplemental surveys by the Department of Crown Lands, Quebec, and sketches by J.E. Johnston and E. Haycock.
Geology by Ernest Haycock.
Compilation by James White.



This map has been reprinted from a scanned version of the original map. Reproduction par numérisation d'une carte sur papier.