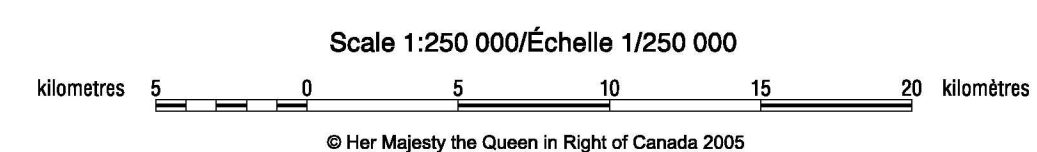


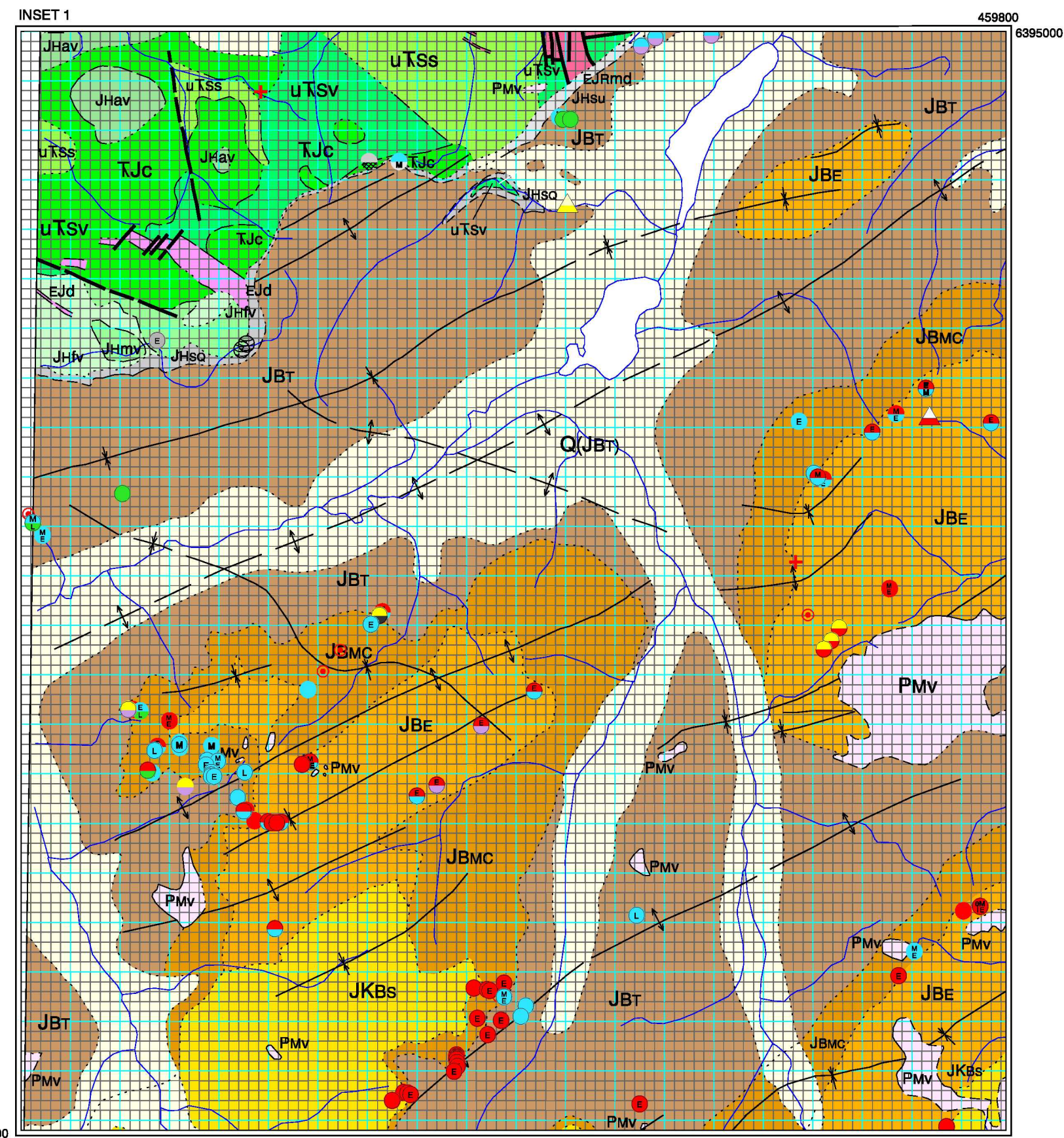
Figure 52. Fossils of the Spatzzi River map area.



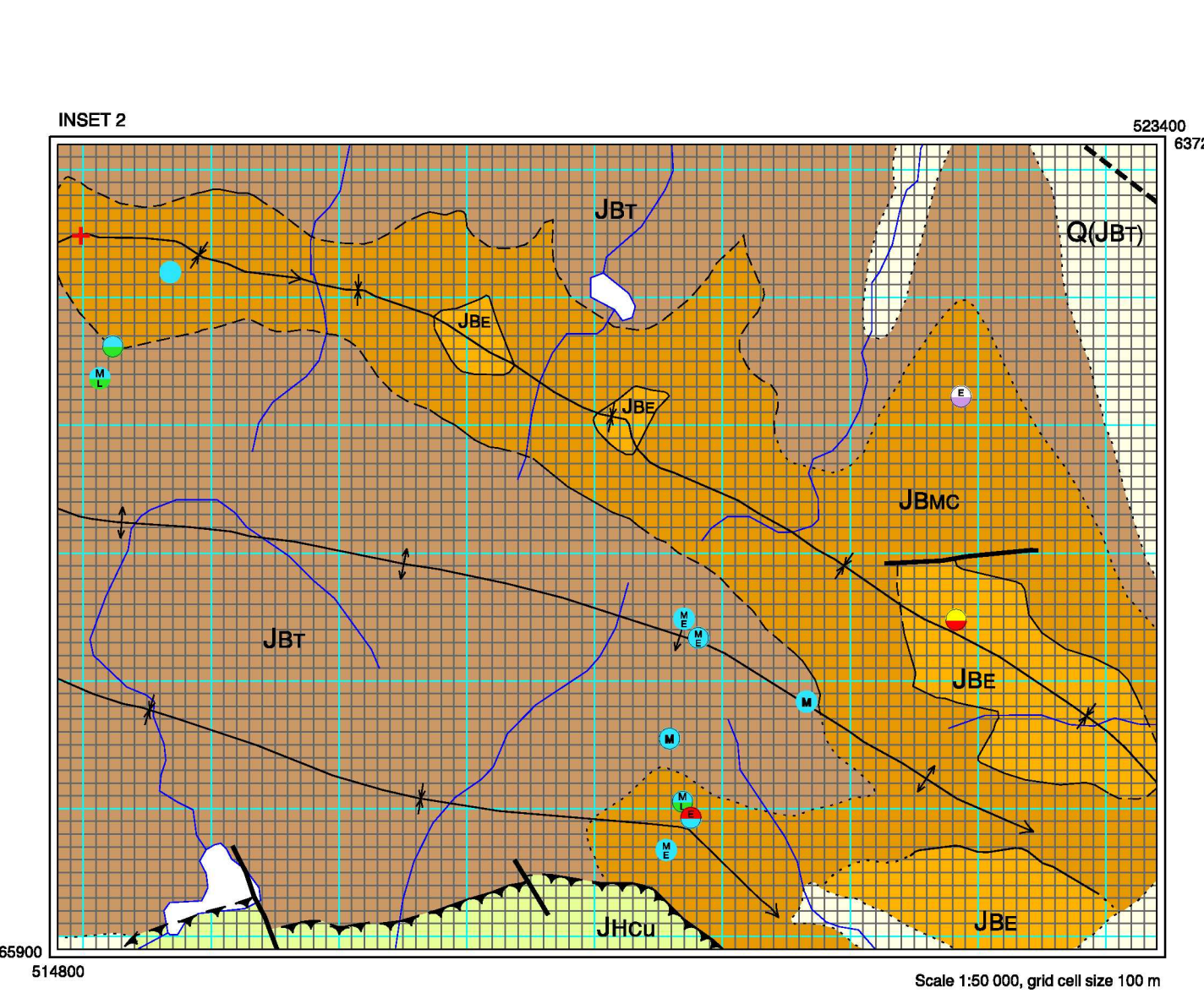
NOTES
This figure shows the locations and ages of fossil collections in the Spatzzi River map area on a background of geological map units. Detailed lists of collections, an explanation of sources of data, symbols, and indices of the collections are provided in Appendix 1. The legend is condensed from GSC Map 2040A, which has descriptions of geological units and symbols.

KEY TO FOSSIL SYMBOLS

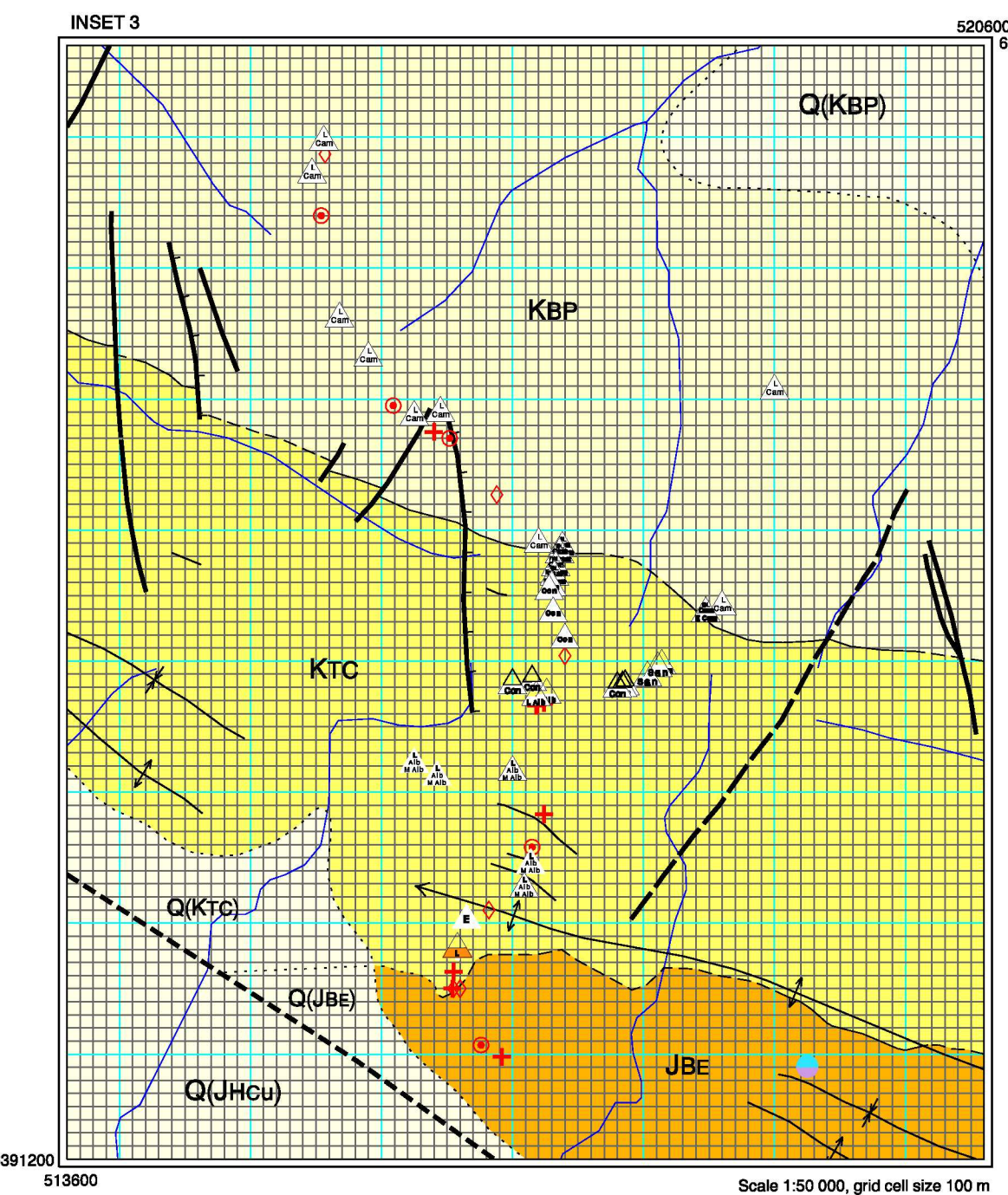
Key to fossil symbols including Age (Cretaceous, Jurassic, Triassic, Permian, Carboniferous), Type of fossil (Macrofossil, Microfossil, Fossils from clasts), Level of confidence in age determination (Solid outline, No outline), and Other symbols (Indeterminate age, Barren, Not submitted). Includes an example of a composite symbol.



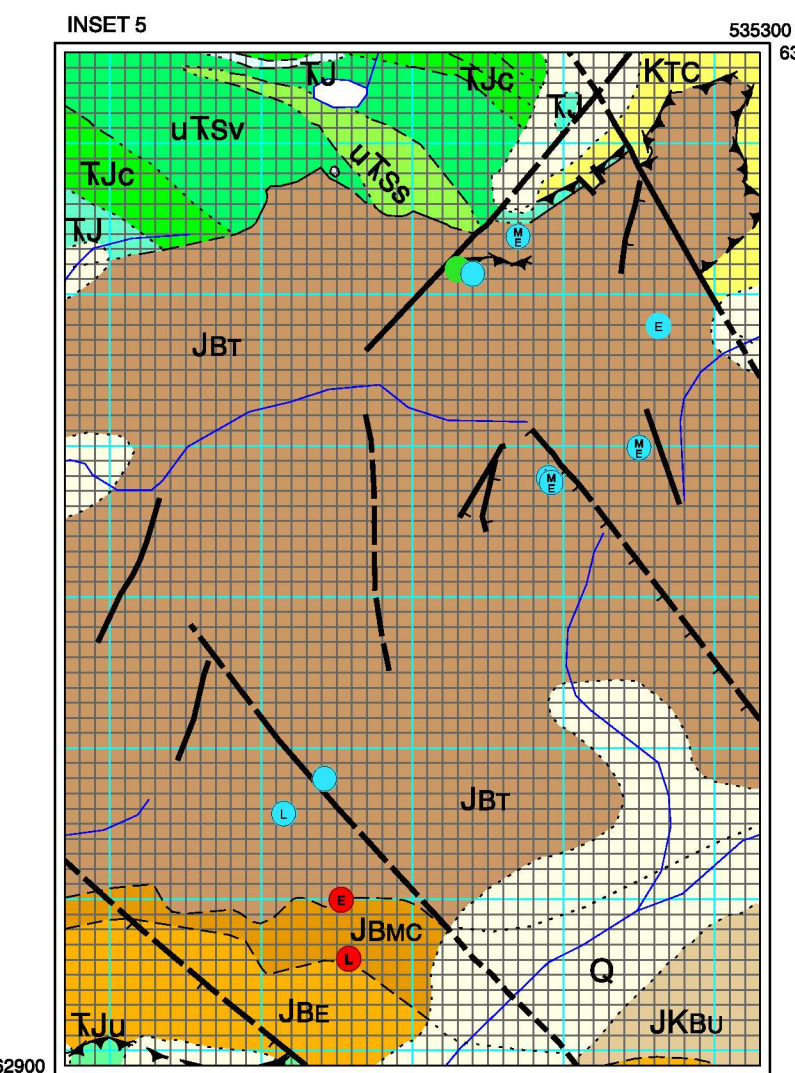
Inset 1 Scale 1:100 000, grid cell size 200 m



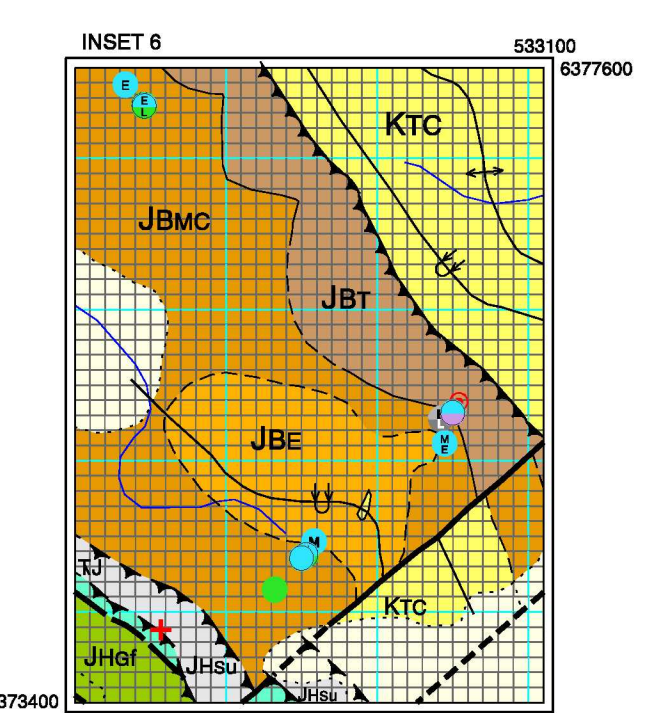
Inset 2 Scale 1:50 000, grid cell size 100 m



Inset 3 Scale 1:50 000, grid cell size 100 m



Inset 4 Scale 1:25 000, grid cell size 100 m



Inset 5 Scale 1:50 000, grid cell size 100 m

CONDENSED LEGEND: A detailed legend for geological units, categorized by Mesozoic and Paleozoic eras. It lists various geological groups and formations with their corresponding symbols and colors.