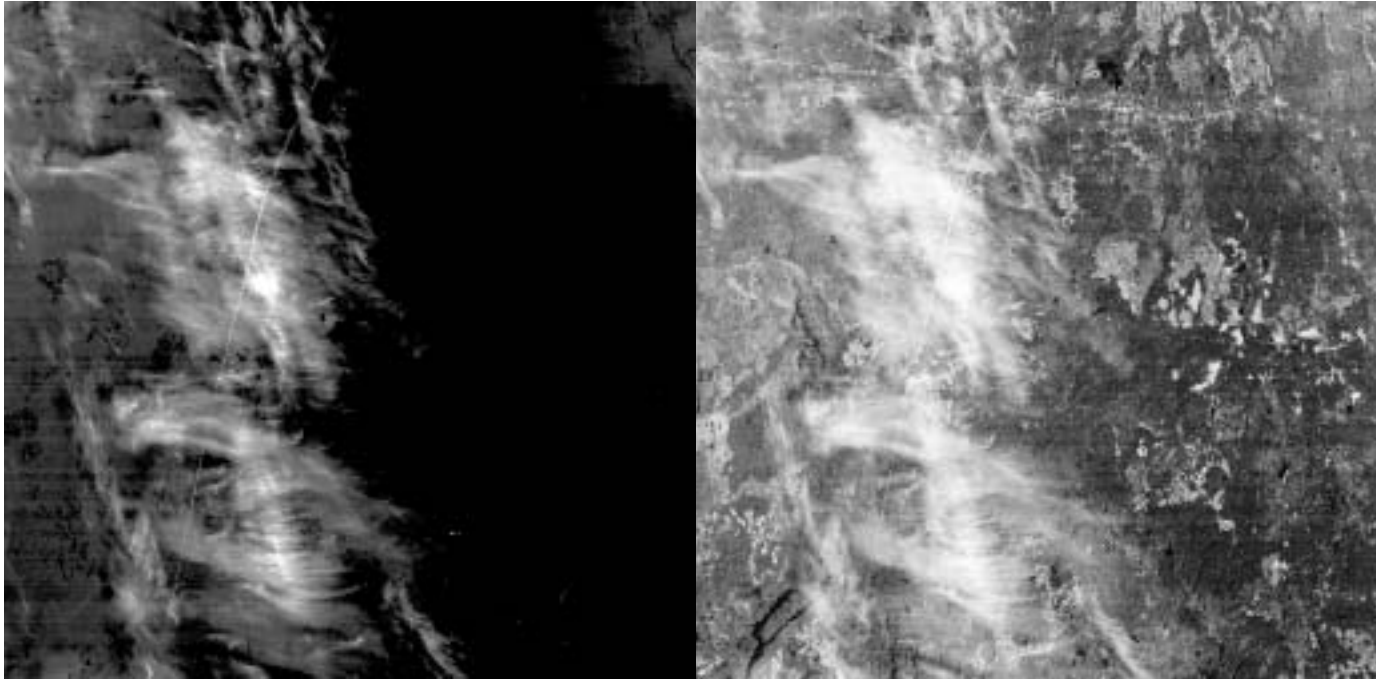


HOT

TM3



TM 21/26

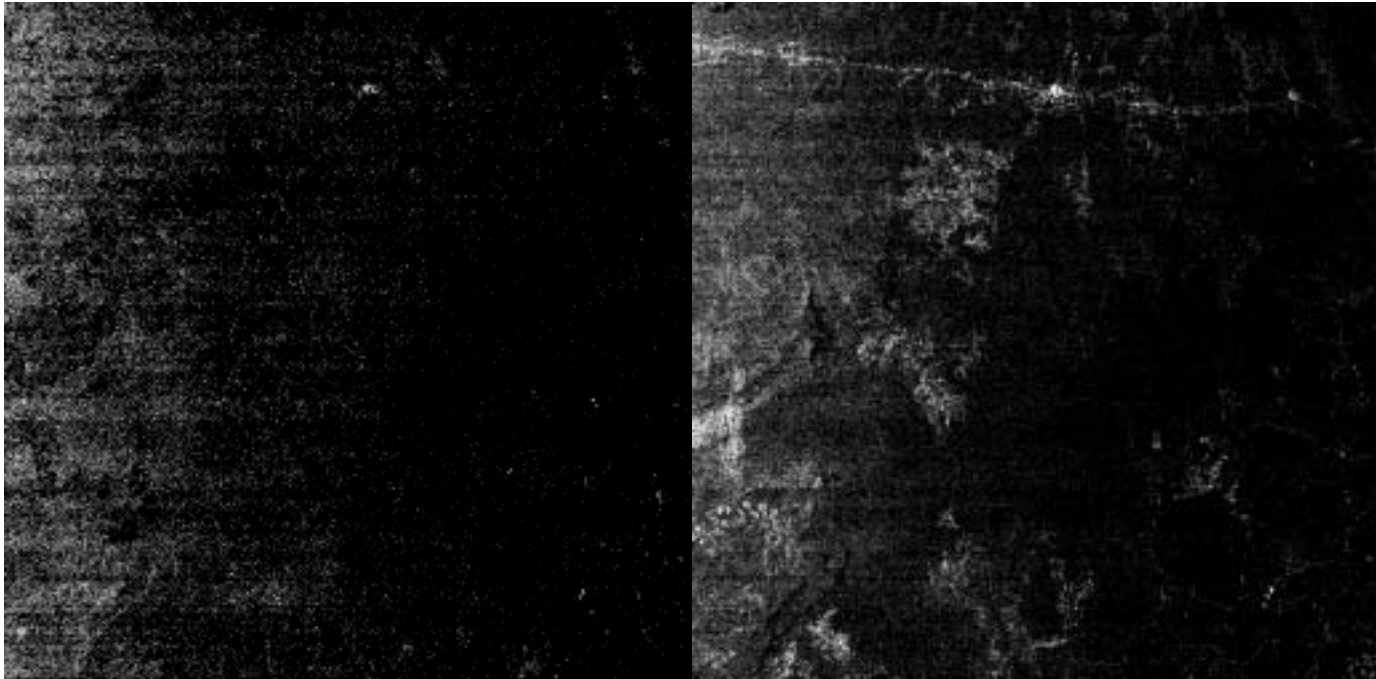
Example results of applying HOT to generate a transform image the 7 test scenes. With the exception of Figure 7b, HOT and the parent TM3 images are presented in the left and right panels respectively. In the case of 7b, the 4th Tasselled Cap transform image is displayed in the right panel in order to illustrate the superior performance of HOT in suppressing surface cover response.

Figure7a

[Back to document text](#)

HOT

TC

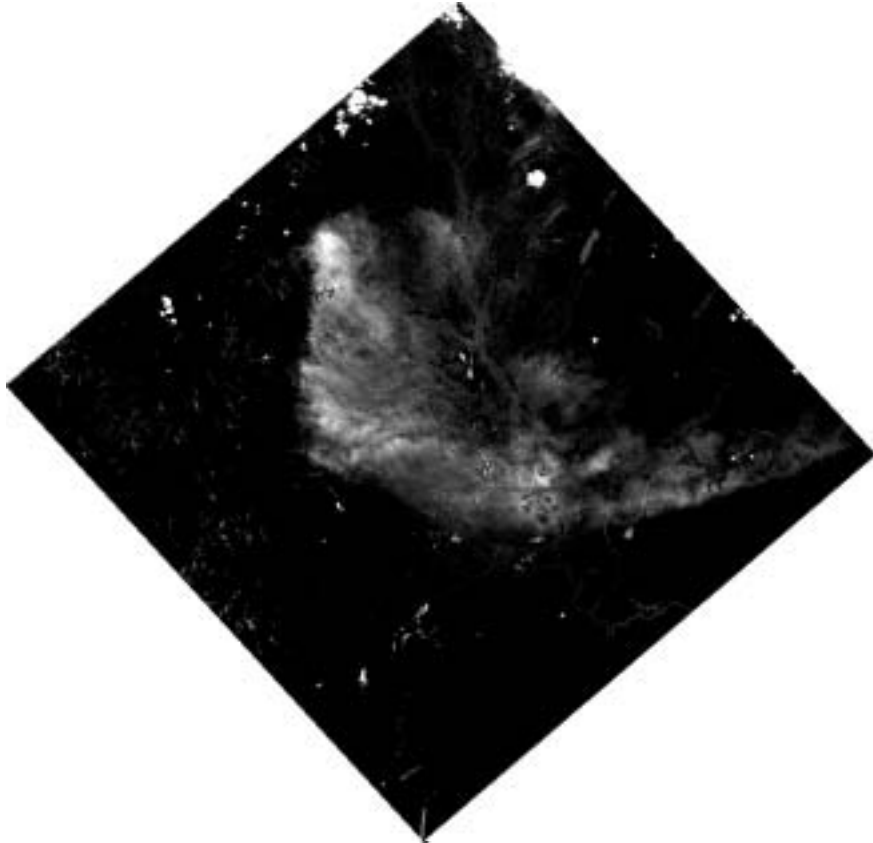


TM 21/26 clear

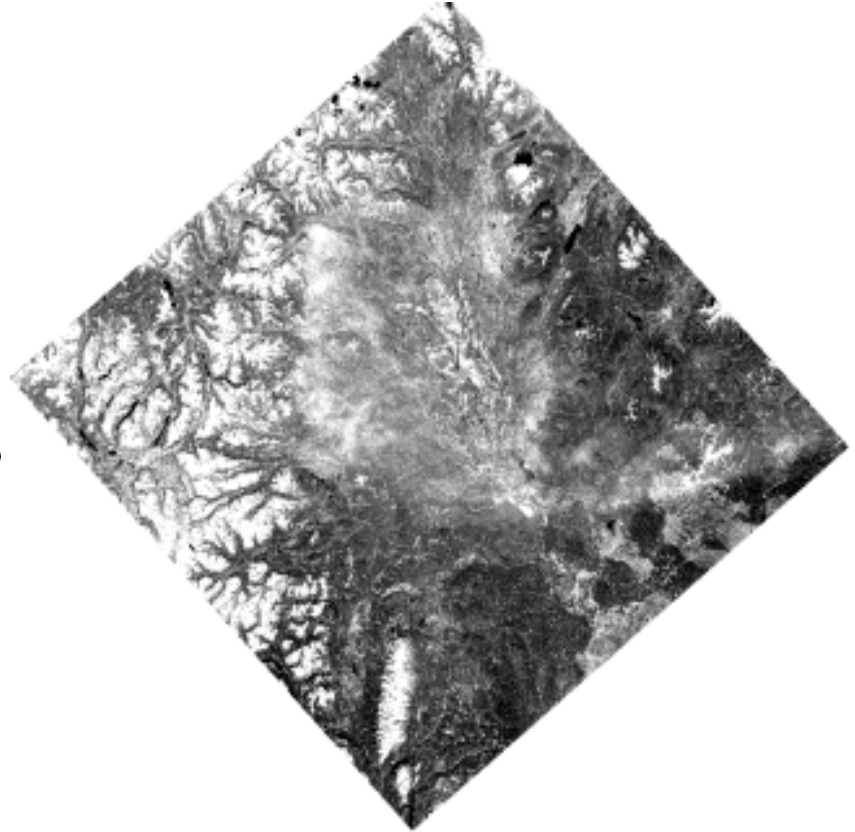
Figure7b

[Back to document text](#)

HOT



TM3

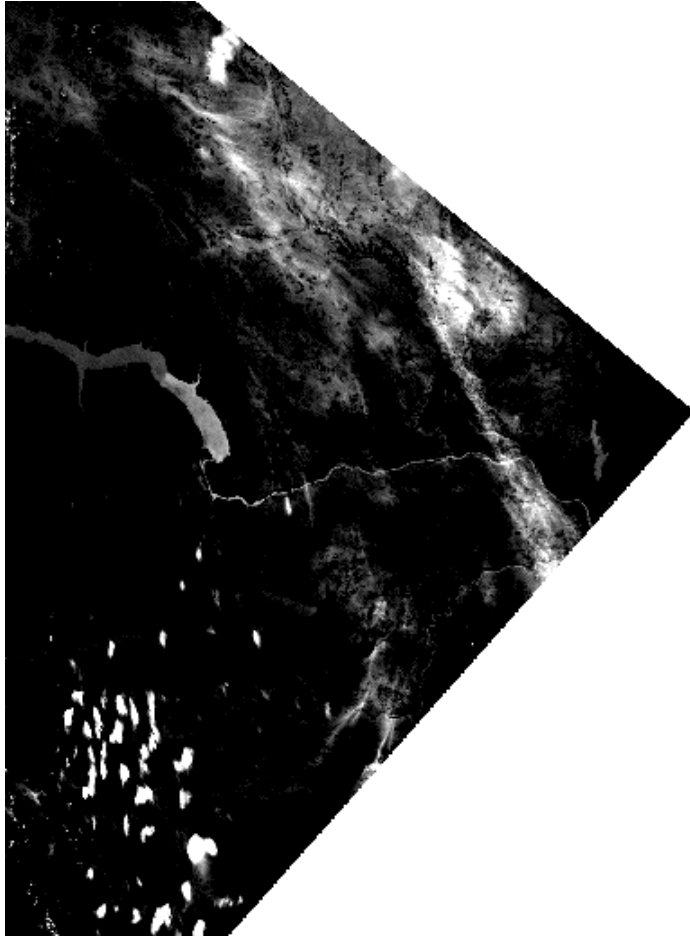


TM 55/18

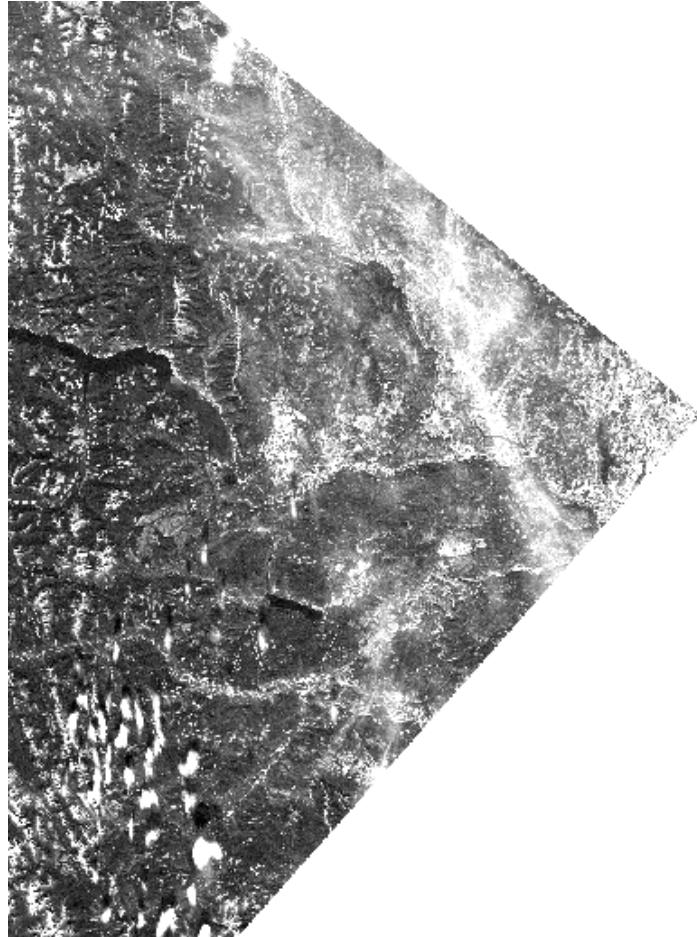
Figure7c

[Back to document text](#)

HOT



TM3



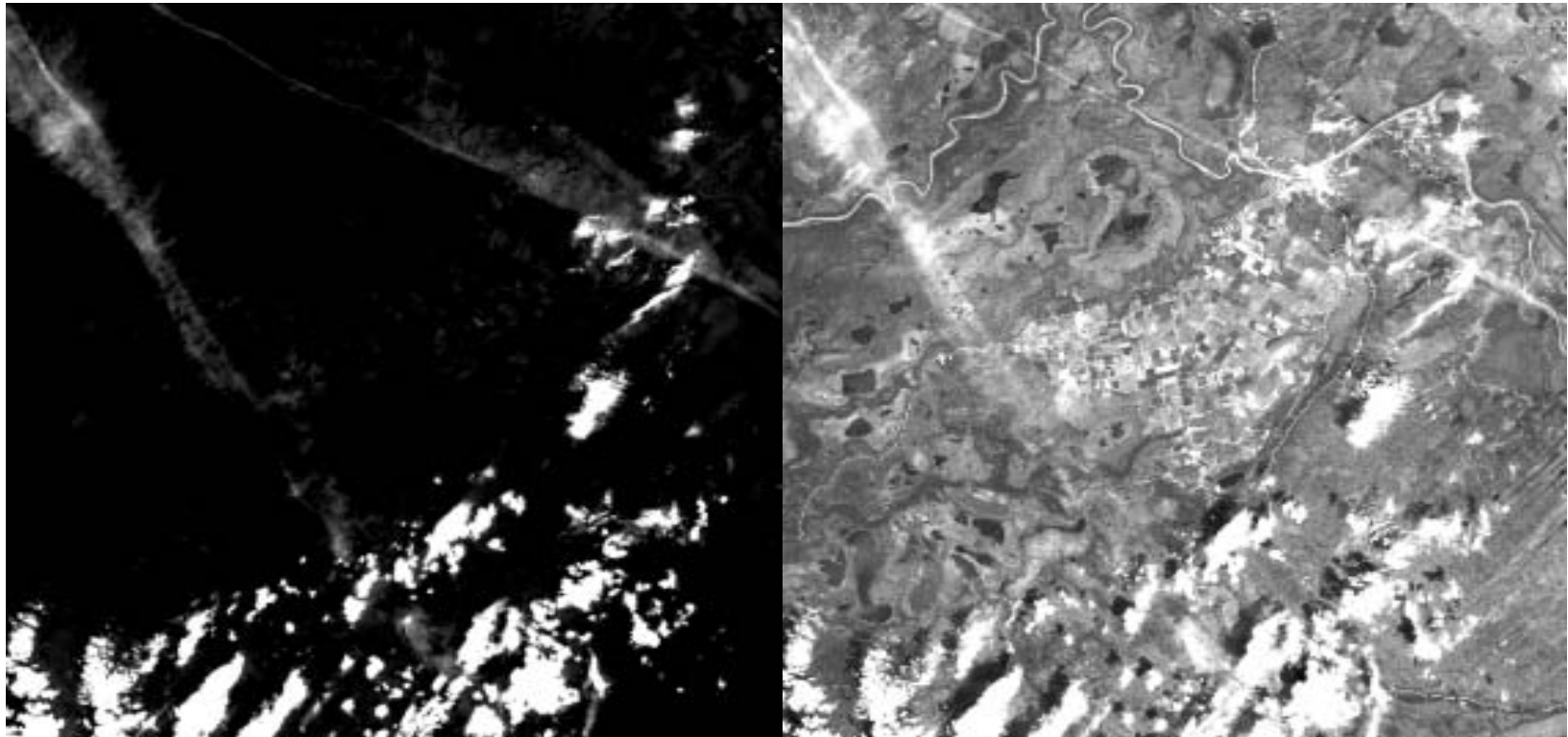
TM 49/21

Figure7d

[Back to document text](#)

HOT

TM3



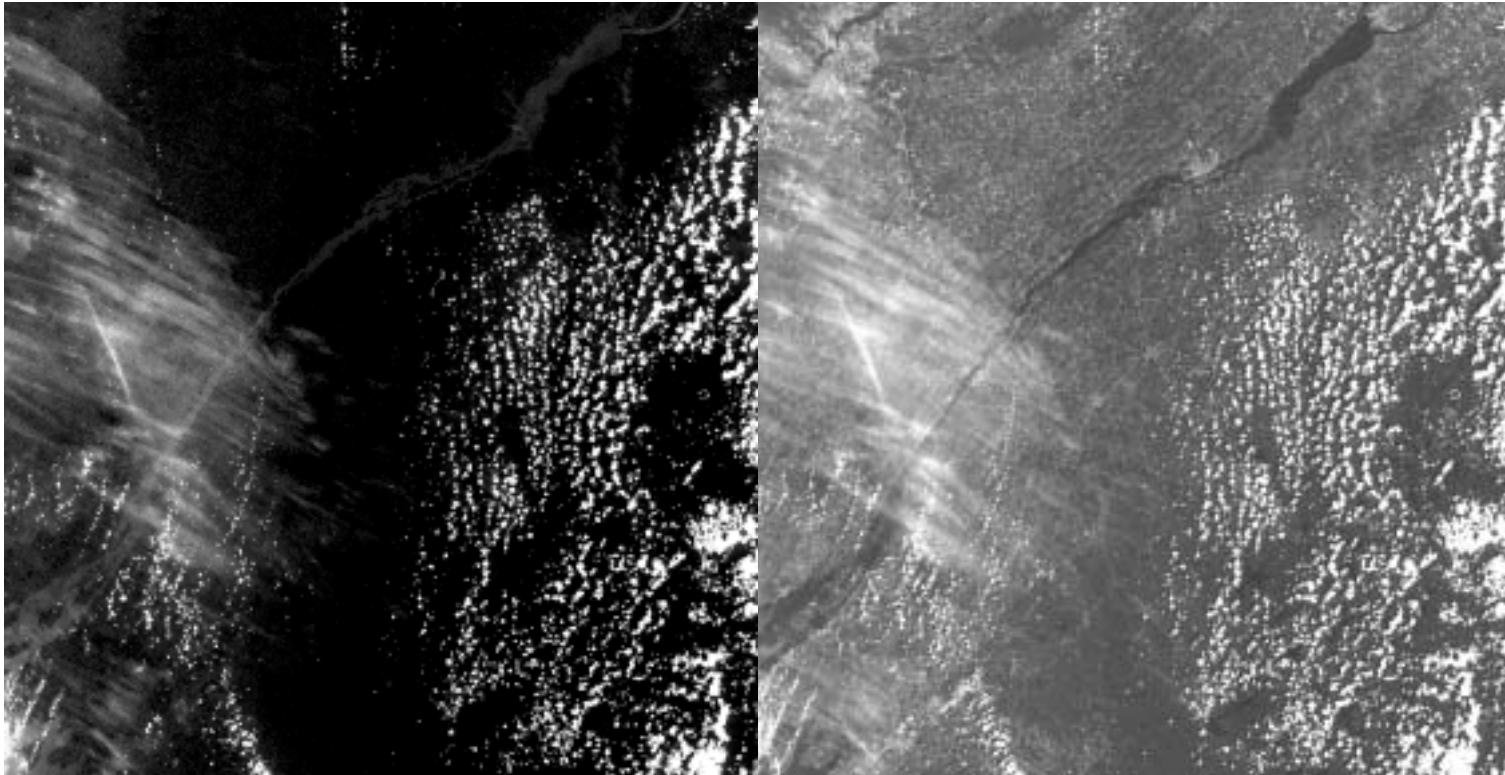
TM 34/23

Figure7e

[Back to document text](#)

HOT

TM3



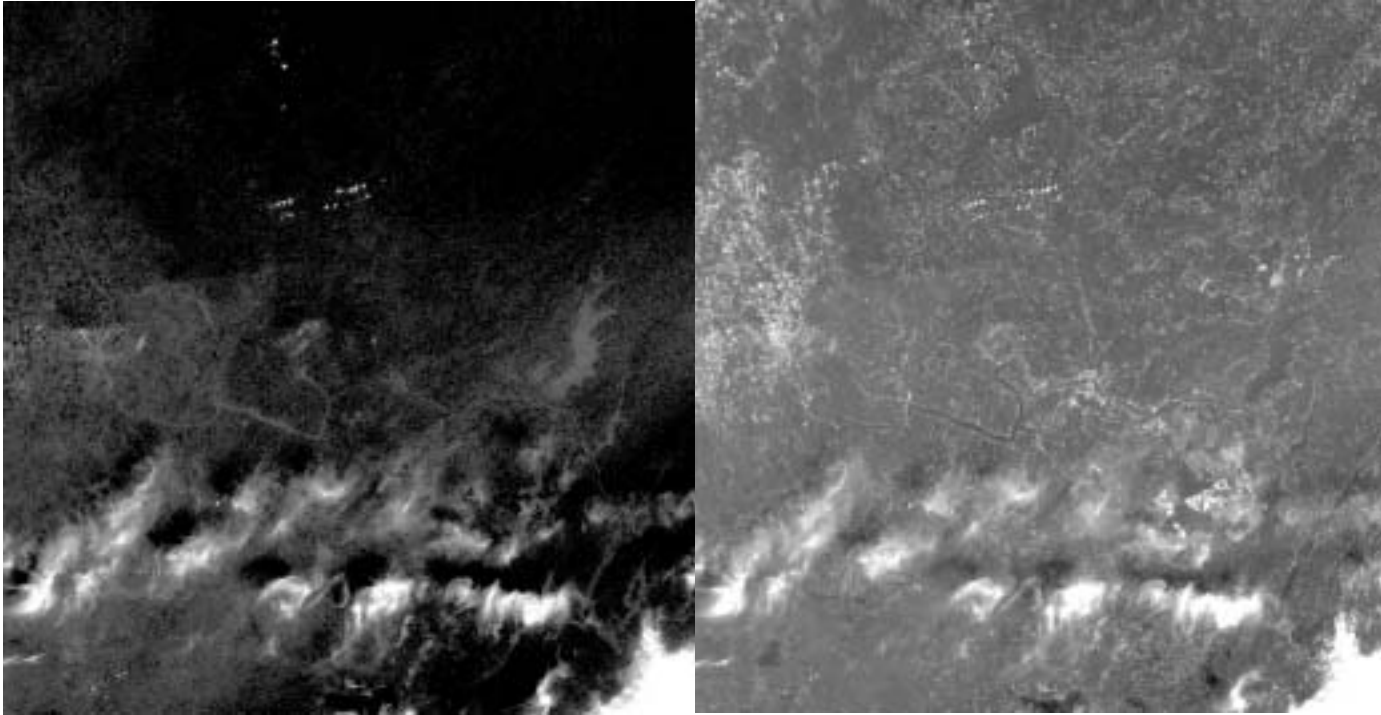
TM 15/29

Figure7f

[Back to document text](#)

HOT

TM3



TM 10/28

Figure7g

[Back to document text](#)