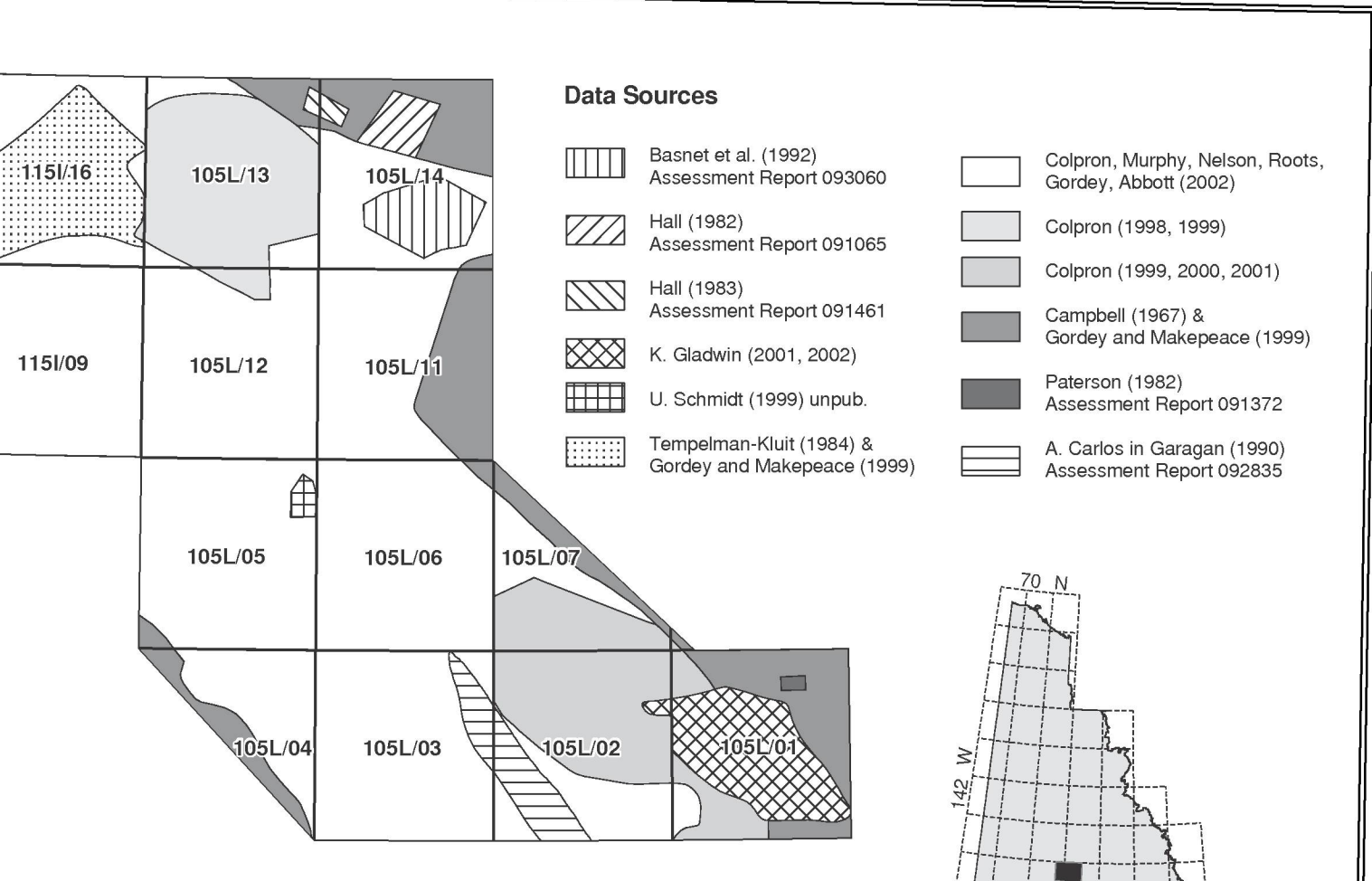


Geological legend table with columns for rock types (e.g., Tertiary, Late Cretaceous, Early Cretaceous) and their corresponding symbols and descriptions.

Geological legend table for layered rocks, including sections for Permian, Paleozoic, Carboniferous, Devonian, and Cambrian periods.

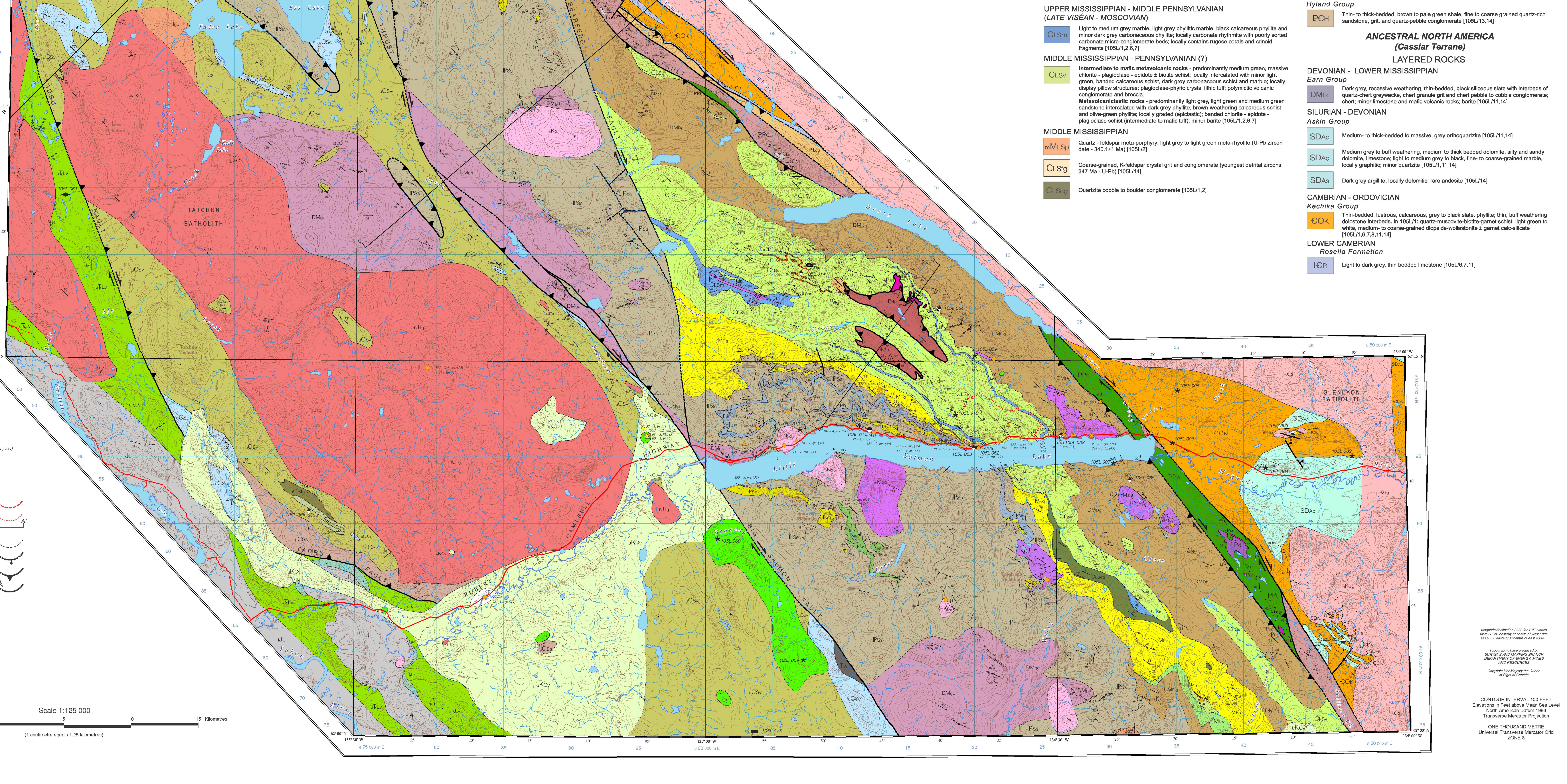
Geological legend table for Yukon-Tanana Terrane layered rocks, detailing units like Little Katzas, Palms, and Loken member.



Symbol Legend and Data Sources table, detailing symbols for stations, bedding, and various geological features, along with a list of data sources.

Indian and Northern Affairs Canada Exploration and Geological Services Division Yukon Region Geological Survey of Canada Open File 1457 (Sheet 1 of 2)

PRELIMINARY GEOLOGICAL MAP OF GLENLYON (105L/1-7,11-14) AND NORTHEAST CARMACKS (115U/9,16) AREAS, YUKON TERRITORY (1:125 000 scale)



Geological Survey of Canada Open File 1457 (Sheet 1 of 2)