

Bathymetry collected by Freiberg University during cruise SO-94, SO-133 and SO-166 of the R/V Sonne (P.M. Hertzog and M.D. Hamington, co-chief scientists) using HYDROSWEEP and SIMRAD swath mapping. Compilation and processing of the acoustic data and was carried out at sea by RF (Reedereigesellschaft Forschungsschiffahrt, GmbH).

The SAR (synthetic aperture radar) image of Lihir Island was provided by Lihir Mining Co. Ltd.

Funding for the collection of bathymetric data was provided through grants from the German Federal Ministry for Education, Science, Research and Technology (BMBWF).

Digital cartography by the Geoscience Information Division.

Plots produced by the Geological Survey of Canada.

Any revisions or additional geological information known to the user would be welcomed by the Geological Survey of Canada.

This map should not be used for navigation.

OPEN FILE 3831

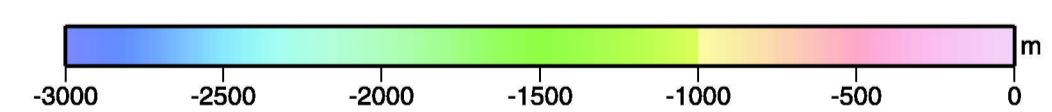
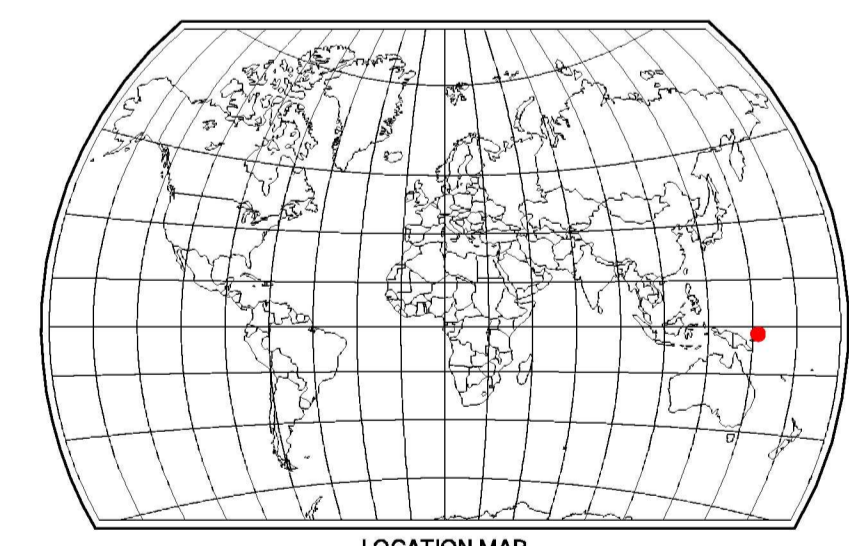
COLOUR-SHADED BATHYMETRY
LIHIR ISLAND GROUP
NEW IRELAND BASIN, PAPUA NEW GUINEA

COMPILATION OF DATA FROM SO-94, SO-133 AND
SO-166 BATHYMETRIC MAPPING

Scale 1:150 000/Echelle 1/150 000

Kilometres 0 2 4 6 8 10 12 Kilomètres

© Her Majesty the Queen in Right of Canada 2004 © Sa Majesté la Reine du chef du Canada 2004



OPEN FILE
DOSSIER PUBLIC
3831
2004

Open file are products that have not gone through the GSC formal publication process.
Les dossiers publics sont des produits qui n'ont pas été soumis au processus officiel de publication de la GSC.

Recommended citation:
Freiberg University and Geological Survey of Canada 2004. Colour-shaded bathymetry, Lihir Island Group, New Ireland Basin, Papua New Guinea (compilation of data from SO-94, SO-133 and SO-166 bathymetric mapping); Geological Survey of Canada, Open File 3831, scale 1:150 000.