

CONTOUR INTERVAL 100 METRES  
Elevations in Metres above Mean Sea Level  
North American Datum 1983  
Universal Transverse Mercator Projection

LANDSLIDE INVENTORY  
**FORT NORMAN**  
NORTHWEST TERRITORIES  
Scale 1:250 000 Échelle 1:250 000

Kilometers 0 10 20  
Miles 0 10 20  
Projection: Transverse Mercator Projection  
© Her Majesty the Queen in Right of Canada 2004 © du Représentant le Reine du chef du Canada 2004

OPEN FILE  
DOSSIER PUBLIC  
4663  
2004

Although every effort has been made to ensure accuracy, the Open File Report has not been edited for conformity with cartographic standards of Canada.

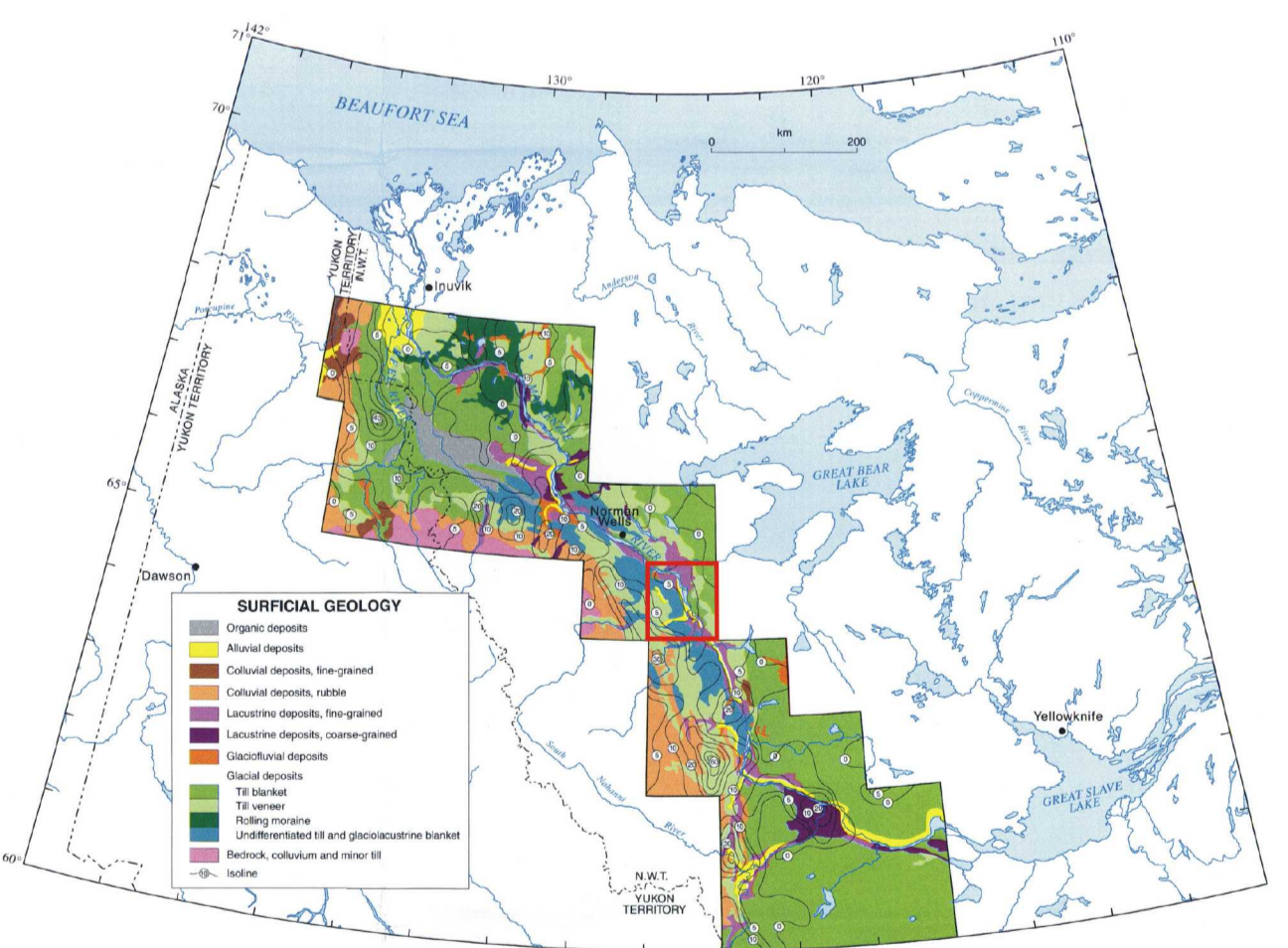
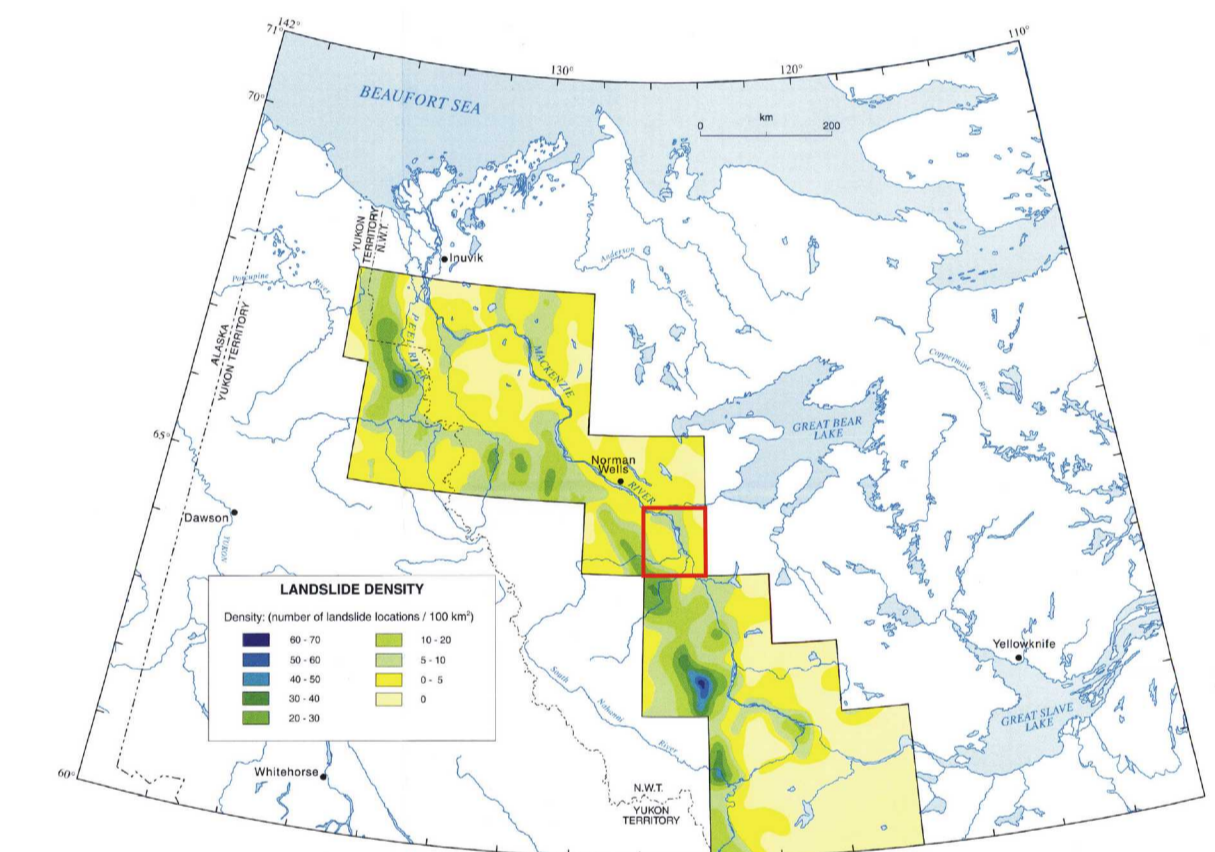
55E	56E	57E
56D	57D	58D
55M	56M	57M

Canada

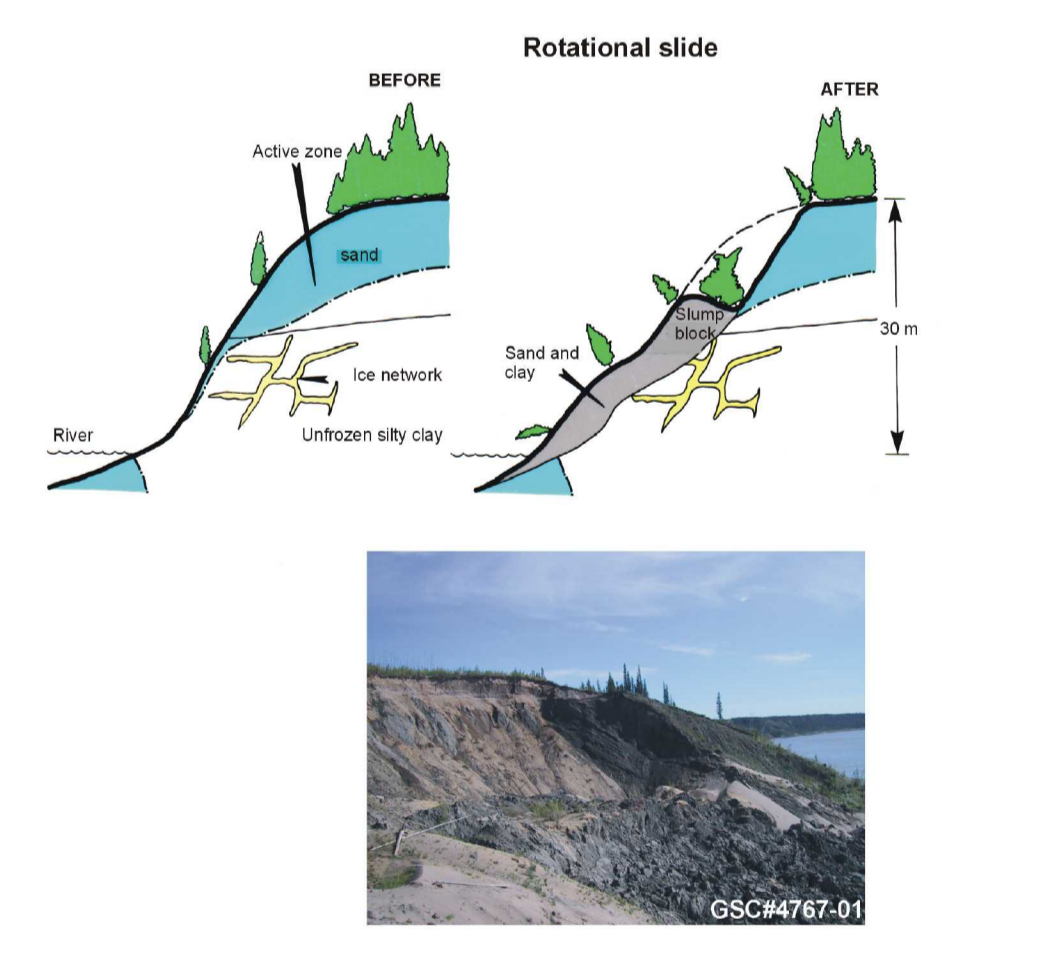
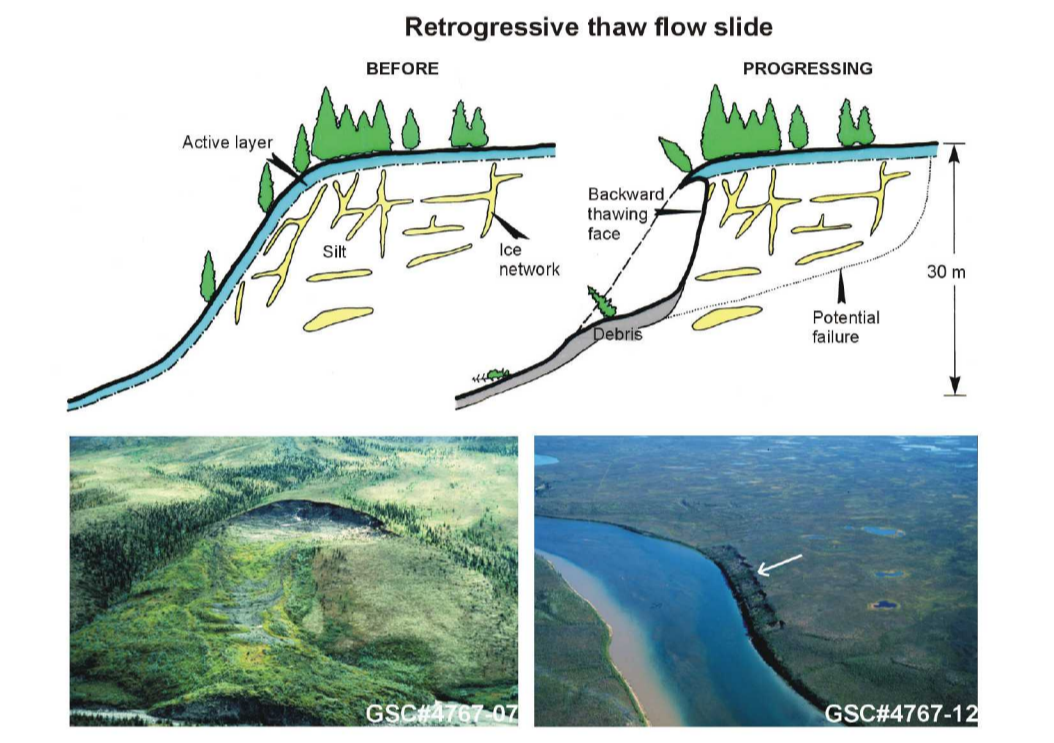
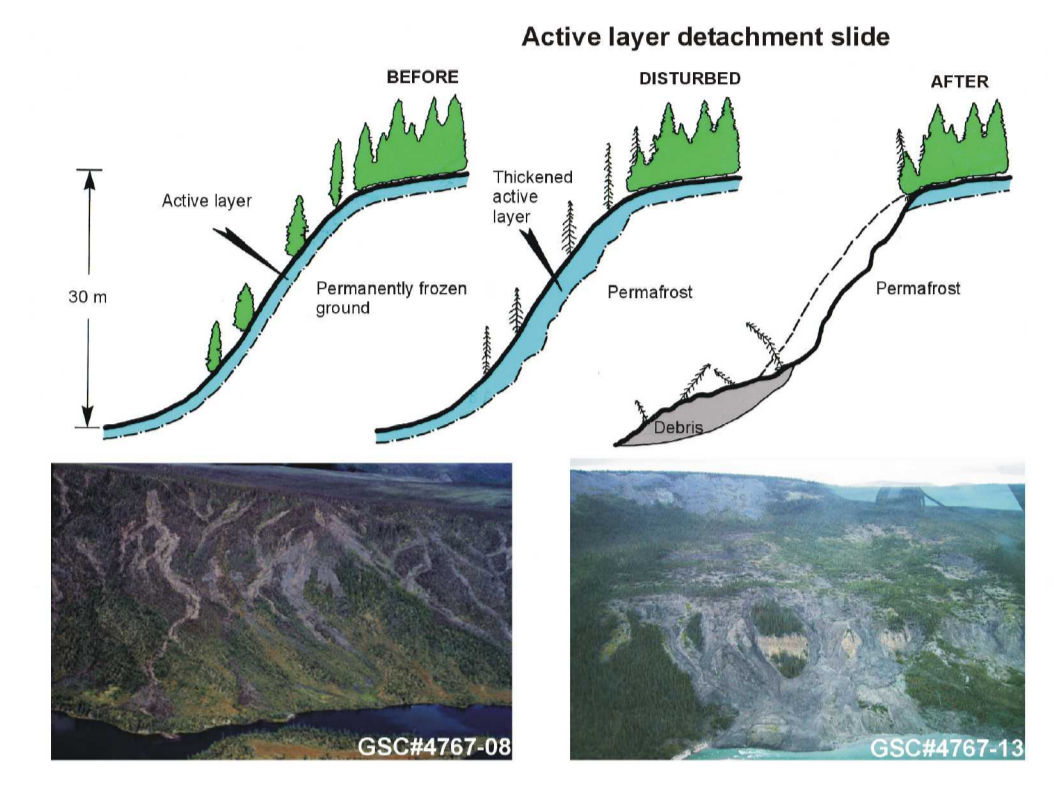
LEGEND

- Landslide area: single landslide or cluster of landslides. Accompanying number is keyed to the database. Accompanying symbol indicates failure mechanism, as follows:
- Retrogressive thaw flow slide
- Active layer detachment slide
- Debris flow
- Rotational slide
- Rock slide (slump)
- Rock flow
- Translational slide
- +
 Landslide scar

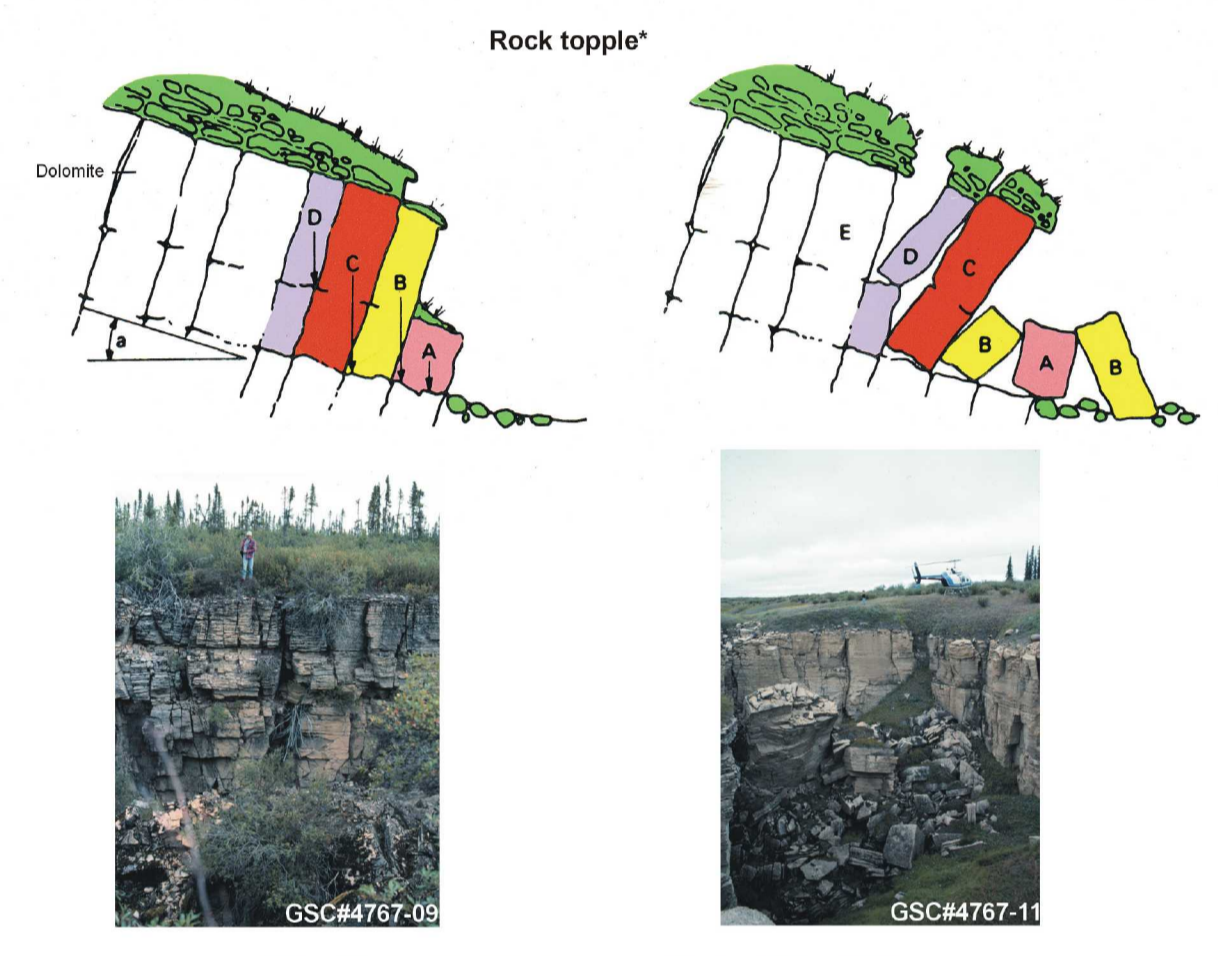
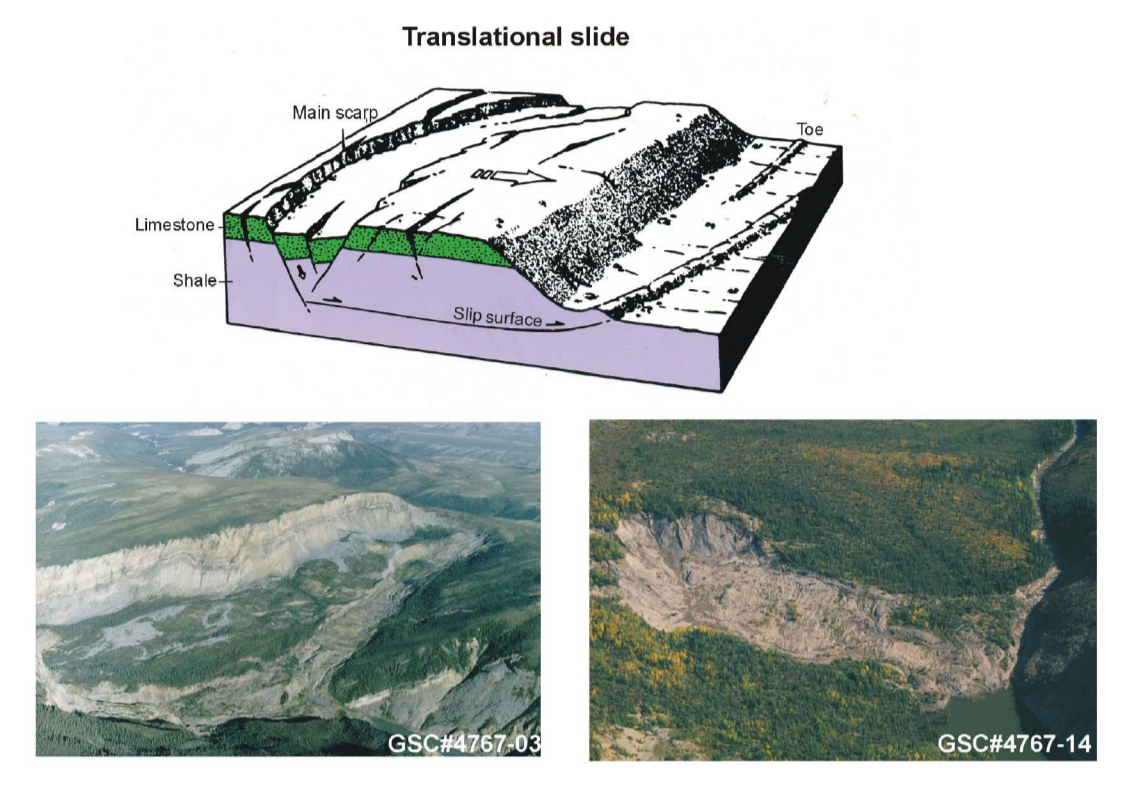
Digital cartography by A. G. Couch, Geological Survey of Canada.  
Landslide compilation by Duk-Rodkin, A., and Hood, J.L. 2003 and 2004.



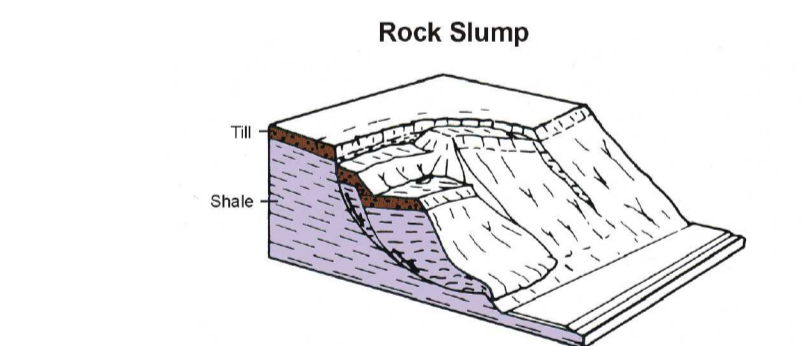
Landslides in surficial sediments



Landslides in bedrock



\* Rock topple are not documented as separate features. However, they occur in areas of karst development and along the Mackenzie River where glacioclastic deposits are exposed.



Debris and rock flow



After: Aylsworth, J.M., Duk-Rodkin, A., Robertson, T. and, Traynor J.A. Figures 2c and 2e, 2000. Landslides of the Mackenzie valley and adjacent mountainous and coastal regions. In: The physical environment of the Mackenzie valley, Northwest Territories: A base line for the assessment of environmental change. Geological Survey of Canada Bull. 547.

Recommended citation:  
Duk-Rodkin, A., and Hood, J.L.  
2004: Landslide Inventory, Fort Norman, Northwest Territories; Geological Survey of Canada, Open File 4663, scale 1:250 000.