

DESCRIPTIVE NOTES

INTRODUCTION
The Meadowbank gold deposit is a part of the Mealy Mts. gold belt, which is a part of the Canadian Shield. The deposit is located in the northern part of the Mealy Mts. gold belt, which is a part of the Canadian Shield.

GENERAL GEOLOGY
The geology of the Meadowbank area is described by a geological map of the area, which is a part of the Canadian Shield. The map shows the distribution of various geological units, including the Meadowbank Group, the Woodlawn Group, and the Mealy Mts. Group.

THE WOODLAWN GROUP
The Woodlawn Group is a geological unit that is located in the northern part of the Mealy Mts. gold belt. It is composed of various rock types, including quartzite, schist, and gneiss.

MINERALIZATION
The Meadowbank gold deposit is a part of the Mealy Mts. gold belt, which is a part of the Canadian Shield. The deposit is located in the northern part of the Mealy Mts. gold belt, which is a part of the Canadian Shield.

ECONOMIC GEOLOGY
The Meadowbank gold deposit is a part of the Mealy Mts. gold belt, which is a part of the Canadian Shield. The deposit is located in the northern part of the Mealy Mts. gold belt, which is a part of the Canadian Shield.

DISCUSSION
The Meadowbank gold deposit is a part of the Mealy Mts. gold belt, which is a part of the Canadian Shield. The deposit is located in the northern part of the Mealy Mts. gold belt, which is a part of the Canadian Shield.

ACKNOWLEDGMENTS
The authors would like to thank the following individuals for their assistance in the preparation of this report: [List of names]

REFERENCES
Aagaard, A.E., 1982. Geology and petrology of the Meadowbank area, Northwest Territories. Geological Survey of Canada, Paper 82-1.

REFERENCES (continued)
Aagaard, A.E., 1983. Geology and petrology of the Meadowbank area, Northwest Territories. Geological Survey of Canada, Paper 83-1.

REFERENCES (continued)
Aagaard, A.E., 1984. Geology and petrology of the Meadowbank area, Northwest Territories. Geological Survey of Canada, Paper 84-1.

REFERENCES (continued)
Aagaard, A.E., 1985. Geology and petrology of the Meadowbank area, Northwest Territories. Geological Survey of Canada, Paper 85-1.

REFERENCES (continued)
Aagaard, A.E., 1986. Geology and petrology of the Meadowbank area, Northwest Territories. Geological Survey of Canada, Paper 86-1.

REFERENCES (continued)
Aagaard, A.E., 1987. Geology and petrology of the Meadowbank area, Northwest Territories. Geological Survey of Canada, Paper 87-1.

REFERENCES (continued)
Aagaard, A.E., 1988. Geology and petrology of the Meadowbank area, Northwest Territories. Geological Survey of Canada, Paper 88-1.

REFERENCES (continued)
Aagaard, A.E., 1989. Geology and petrology of the Meadowbank area, Northwest Territories. Geological Survey of Canada, Paper 89-1.

REFERENCES (continued)
Aagaard, A.E., 1990. Geology and petrology of the Meadowbank area, Northwest Territories. Geological Survey of Canada, Paper 90-1.

GENERAL GEOLOGY (continued)
The geology of the Meadowbank area is described by a geological map of the area, which is a part of the Canadian Shield. The map shows the distribution of various geological units, including the Meadowbank Group, the Woodlawn Group, and the Mealy Mts. Group.

THE WOODLAWN GROUP (continued)
The Woodlawn Group is a geological unit that is located in the northern part of the Mealy Mts. gold belt. It is composed of various rock types, including quartzite, schist, and gneiss.

MINERALIZATION (continued)
The Meadowbank gold deposit is a part of the Mealy Mts. gold belt, which is a part of the Canadian Shield. The deposit is located in the northern part of the Mealy Mts. gold belt, which is a part of the Canadian Shield.

ECONOMIC GEOLOGY (continued)
The Meadowbank gold deposit is a part of the Mealy Mts. gold belt, which is a part of the Canadian Shield. The deposit is located in the northern part of the Mealy Mts. gold belt, which is a part of the Canadian Shield.

DISCUSSION (continued)
The Meadowbank gold deposit is a part of the Mealy Mts. gold belt, which is a part of the Canadian Shield. The deposit is located in the northern part of the Mealy Mts. gold belt, which is a part of the Canadian Shield.

ACKNOWLEDGMENTS (continued)
The authors would like to thank the following individuals for their assistance in the preparation of this report: [List of names]

REFERENCES (continued)
Aagaard, A.E., 1991. Geology and petrology of the Meadowbank area, Northwest Territories. Geological Survey of Canada, Paper 91-1.

REFERENCES (continued)
Aagaard, A.E., 1992. Geology and petrology of the Meadowbank area, Northwest Territories. Geological Survey of Canada, Paper 92-1.

REFERENCES (continued)
Aagaard, A.E., 1993. Geology and petrology of the Meadowbank area, Northwest Territories. Geological Survey of Canada, Paper 93-1.

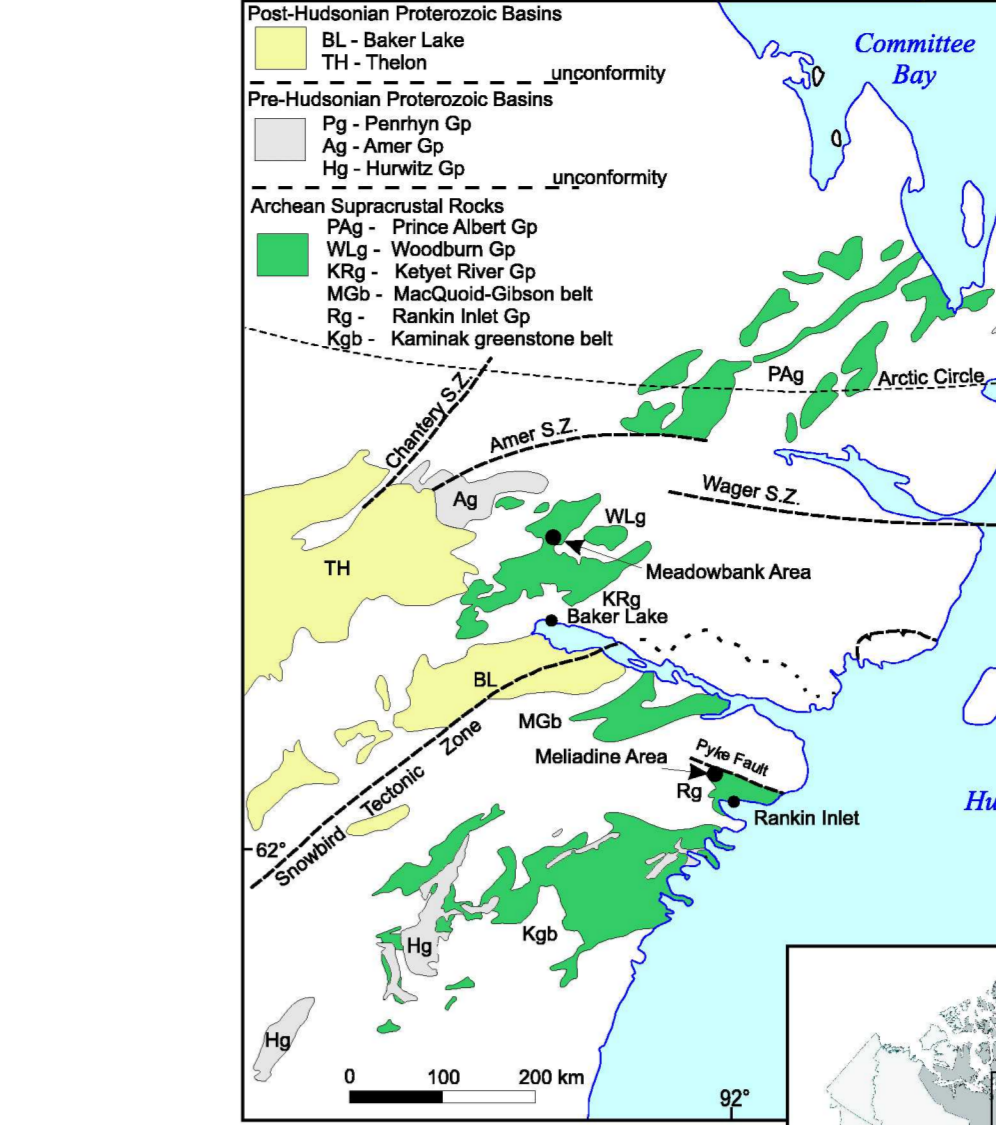
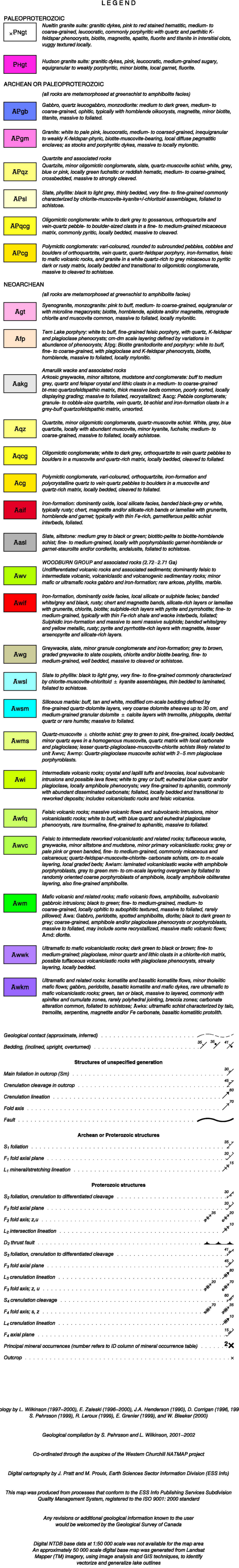
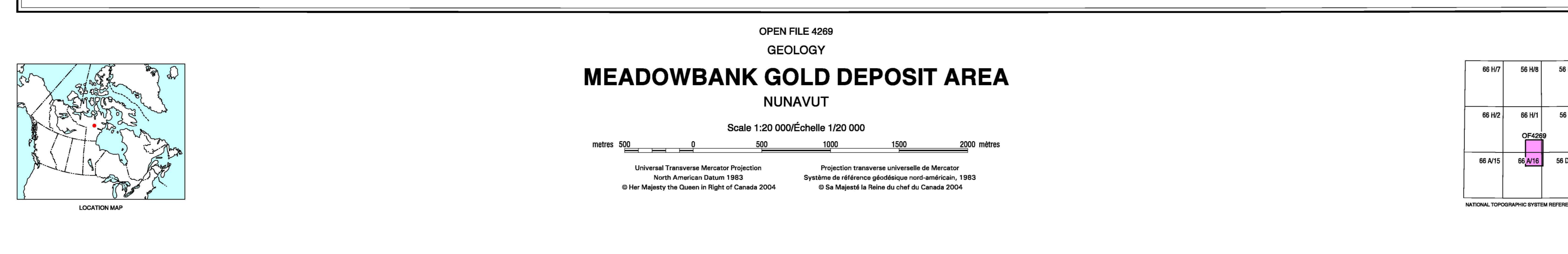
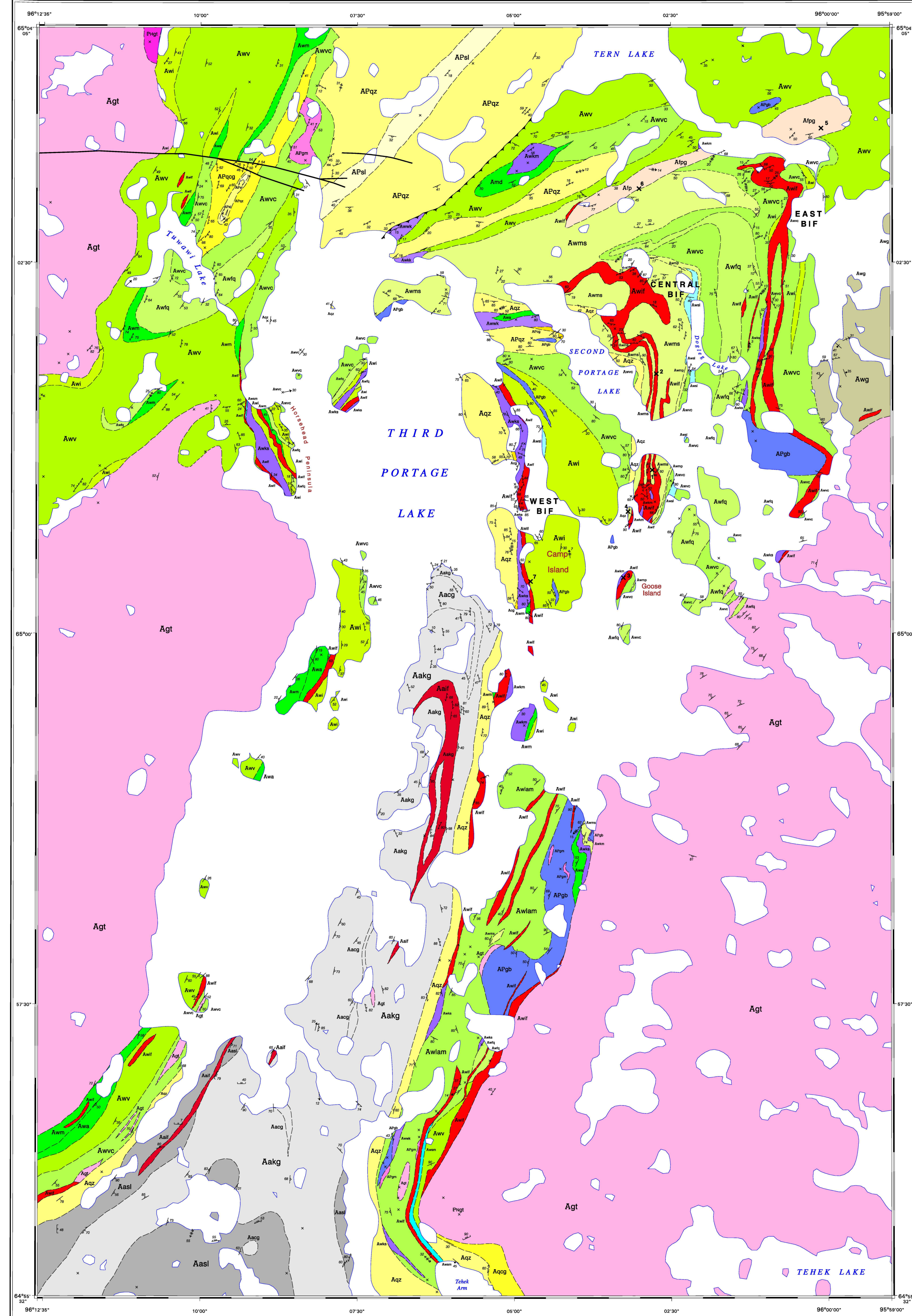


Figure 1. Simplified geology of the Meadowbank area.

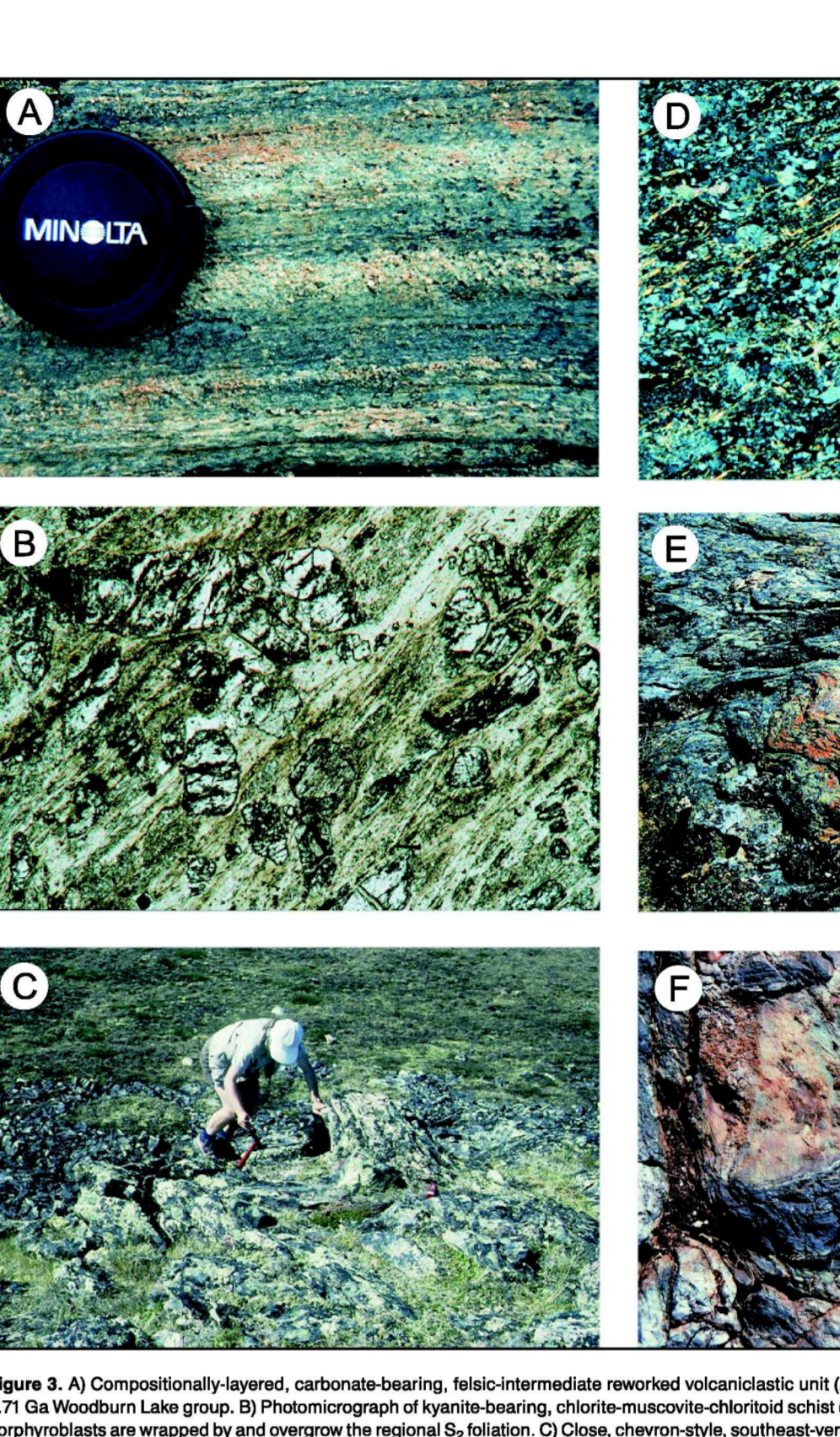


Figure 2. Photomicrographs of various rock types.

Table 1. Mineralogical mineral assemblages of selected rock types. The table lists rock types and their corresponding mineral assemblages.

Table 1. Mineralogical mineral assemblages of selected rock types.

Table 2. Principal mineral occurrences of the Meadowbank deposit area. The table lists mineral occurrences and their corresponding locations.

Table 2. Principal mineral occurrences of the Meadowbank deposit area.

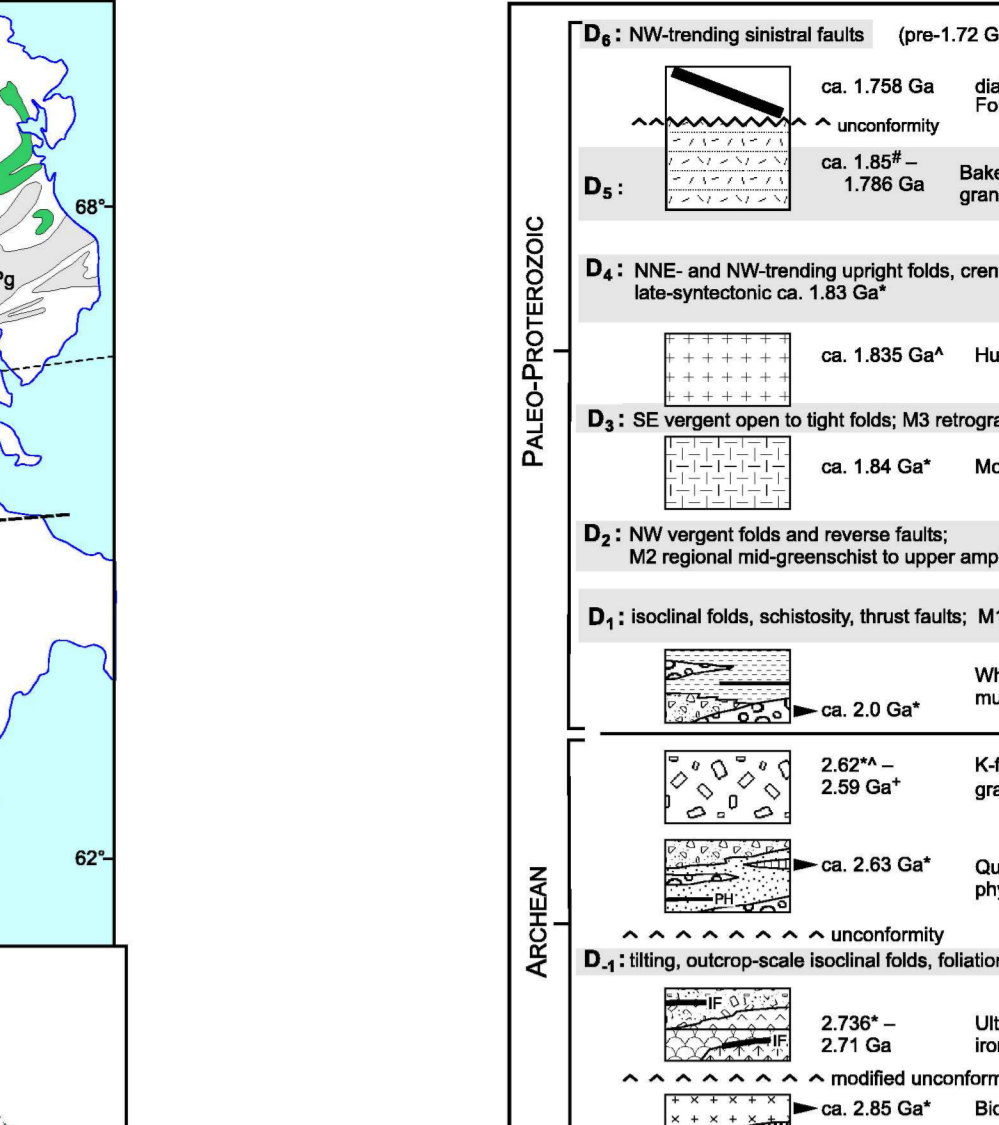


Figure 3. Geological map of the Meadowbank area.

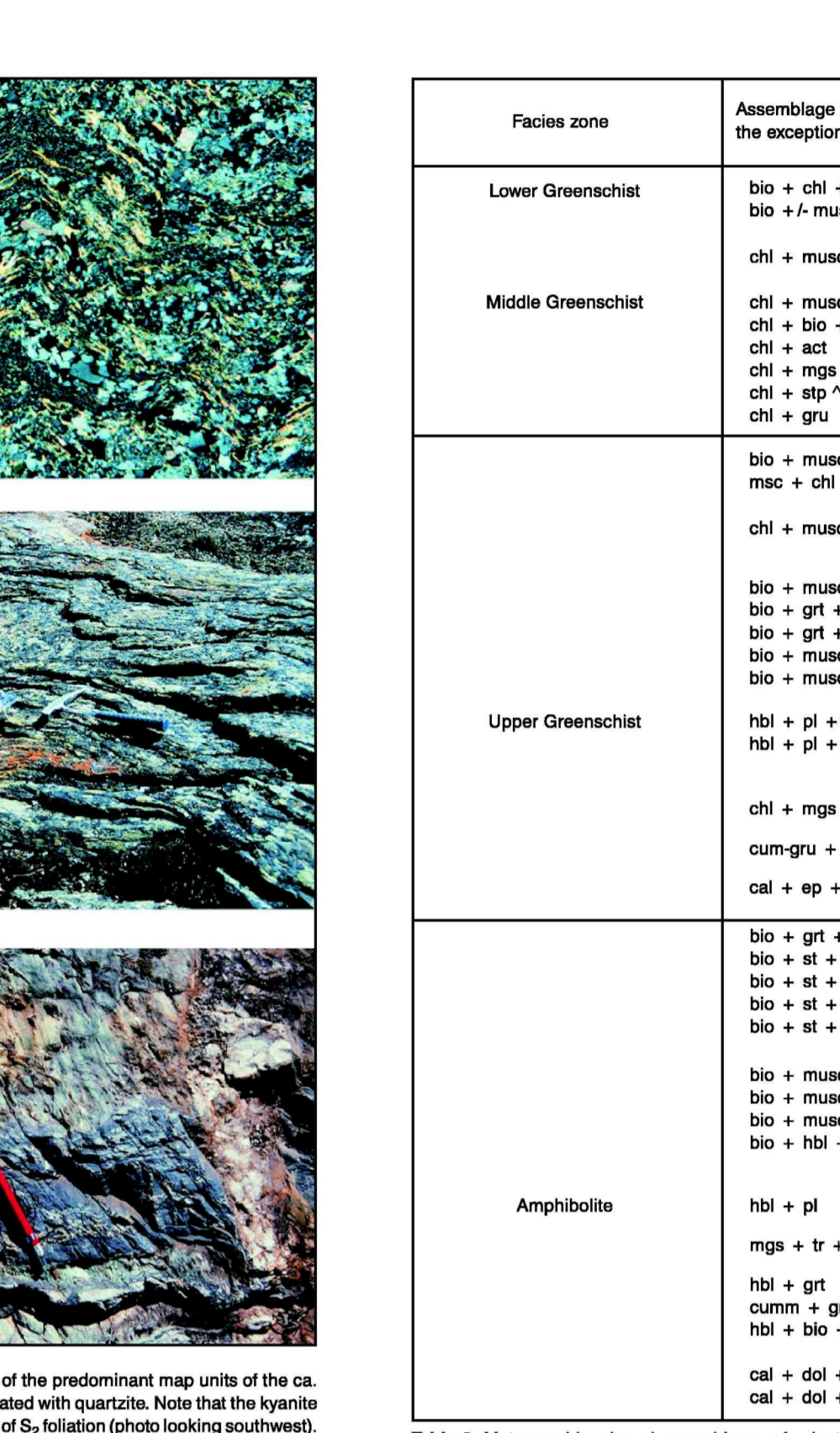


Figure 4. Photomicrographs of various rock types.

Table 3. Mineralogical mineral assemblages of selected rock types. The table lists rock types and their corresponding mineral assemblages.

Table 3. Mineralogical mineral assemblages of selected rock types.

Table 4. Principal mineral occurrences of the Meadowbank deposit area. The table lists mineral occurrences and their corresponding locations.

Table 4. Principal mineral occurrences of the Meadowbank deposit area.

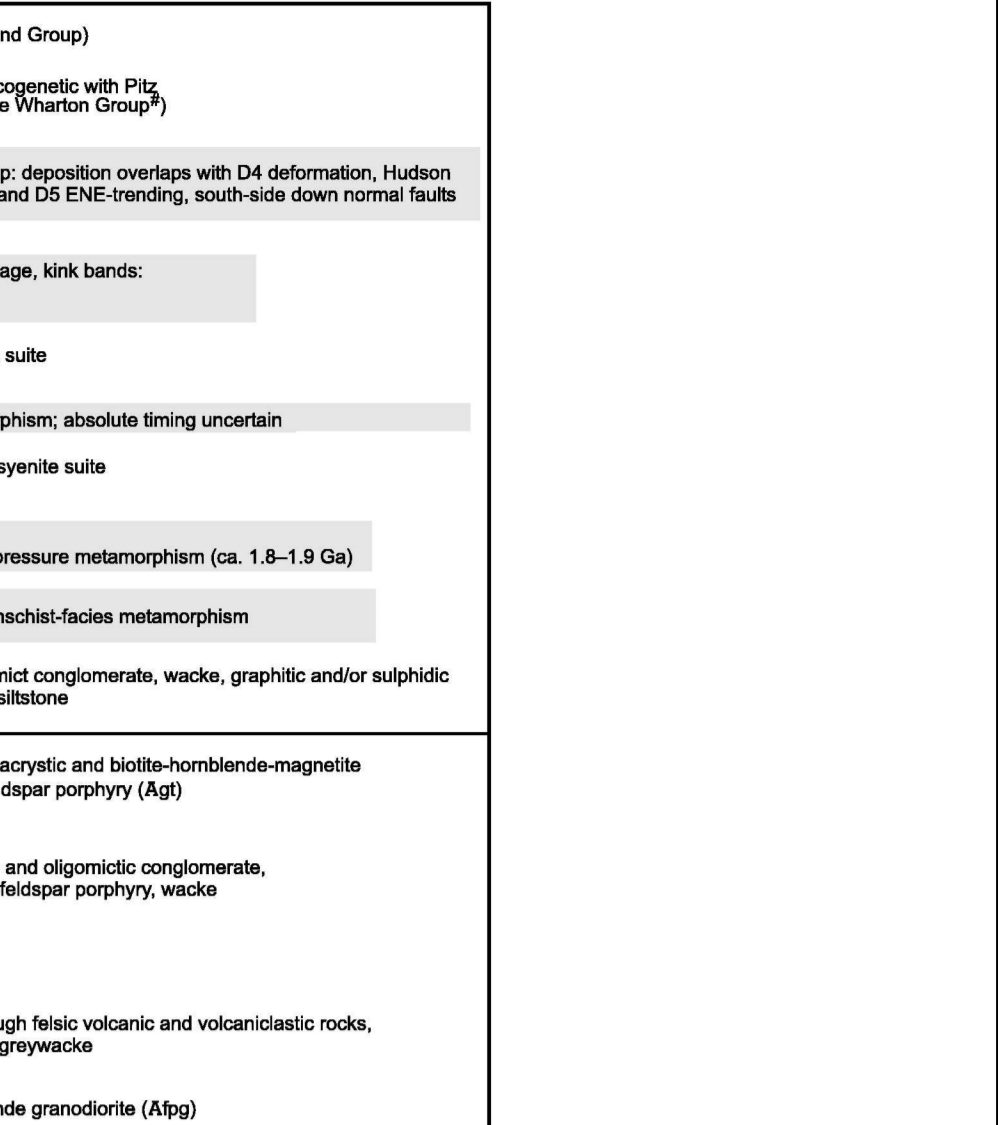


Figure 5. Geological map of the Meadowbank area.

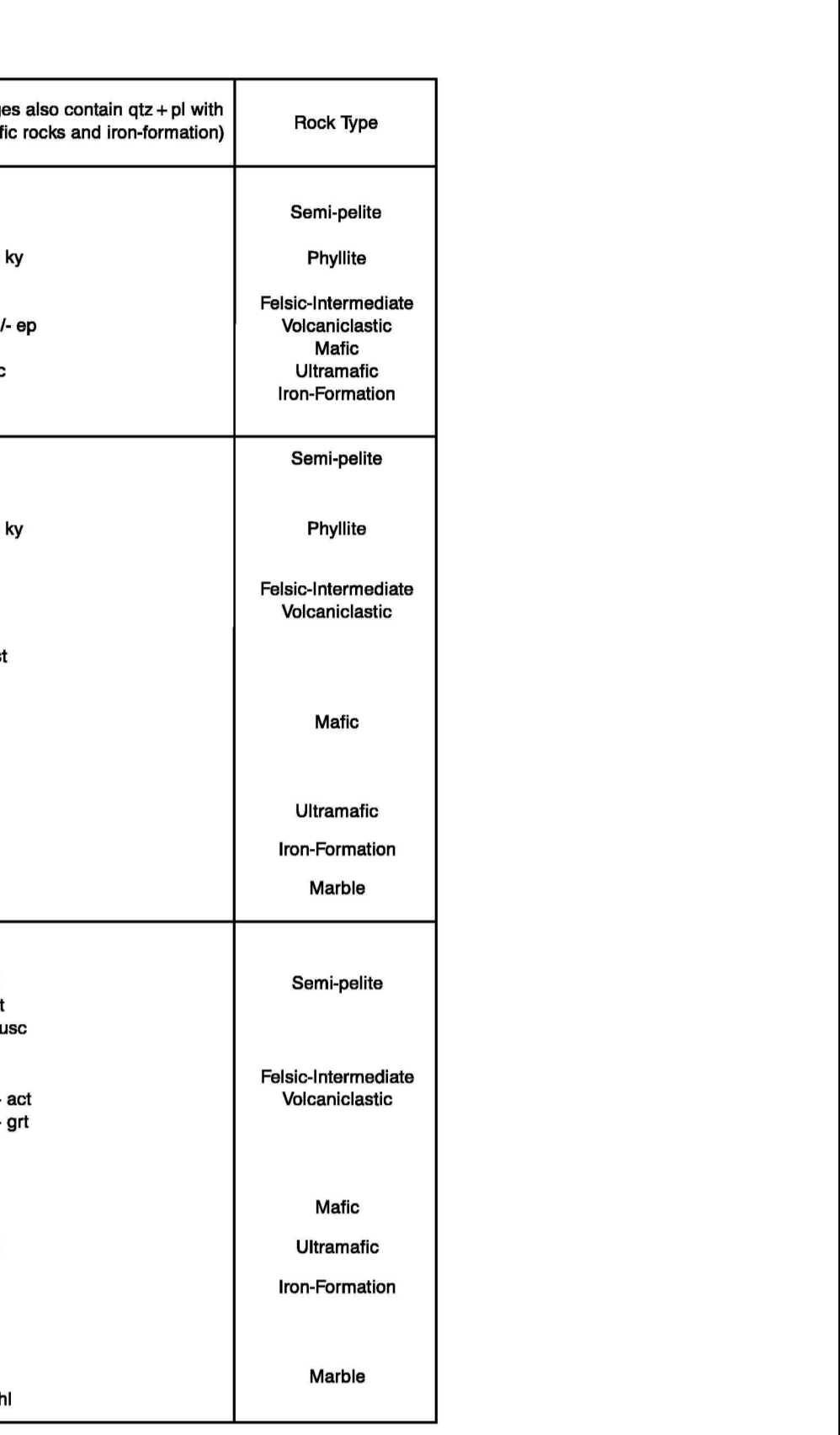


Figure 6. Photomicrographs of various rock types.

Table 5. Mineralogical mineral assemblages of selected rock types. The table lists rock types and their corresponding mineral assemblages.

Table 5. Mineralogical mineral assemblages of selected rock types.

Table 6. Principal mineral occurrences of the Meadowbank deposit area. The table lists mineral occurrences and their corresponding locations.

Table 6. Principal mineral occurrences of the Meadowbank deposit area.

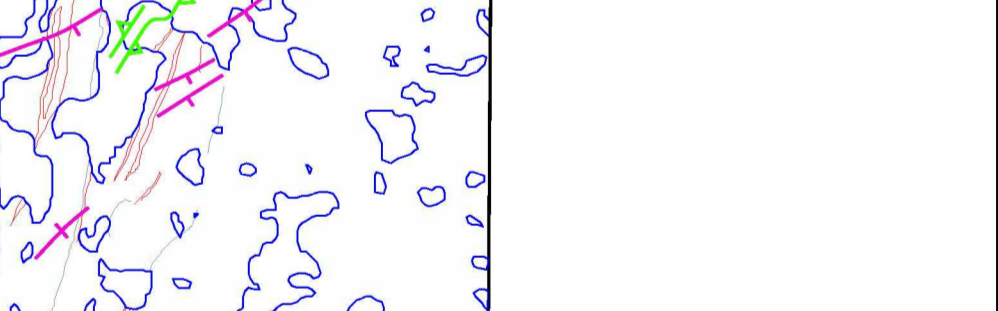


Figure 7. Geological map of the Meadowbank area.

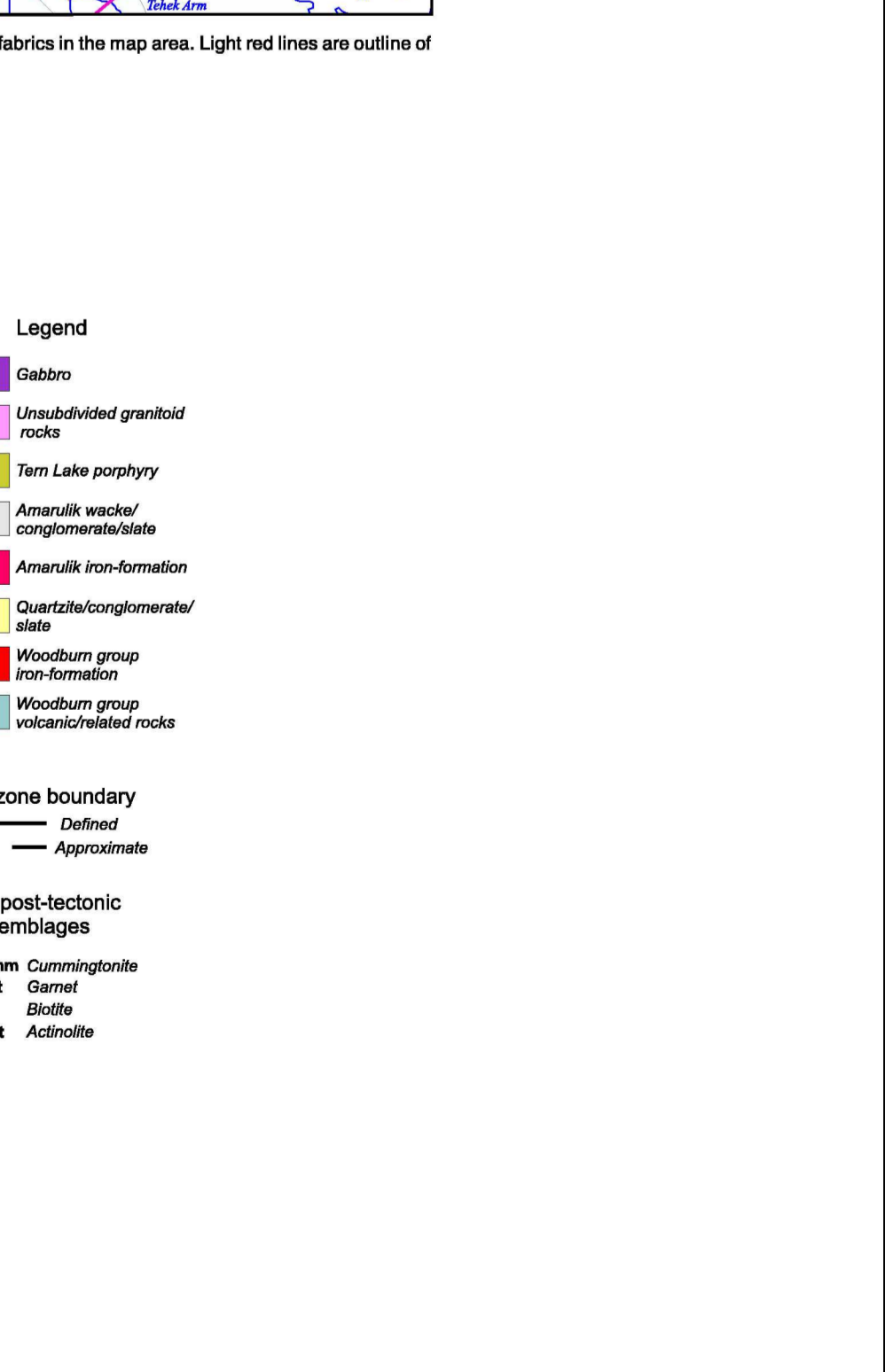


Figure 8. Photomicrographs of various rock types.

Table 7. Mineralogical mineral assemblages of selected rock types. The table lists rock types and their corresponding mineral assemblages.

Table 7. Mineralogical mineral assemblages of selected rock types.