

#### EXPLANATORY NOTES

The Radiometric Map of Ontario is one of a set of 1:2 000 000 regional compilation maps that include three regional-scale geophysical products: magnetic intensity, airborne gamma-ray spectrometry, and a digital elevation model. The radiometric products include the natural and artificial dose rates calculated from a three component  $\gamma$  ray and alpha-ray spectrometry system (AGRS), and the gamma-ray spectrometry (GRS) system. The digital elevation model is derived from the Shuttle Radar Topography Mission (SRTM) data. The radiometric products are compiled from data collected between 1974 and 1984. The surveys were done by the Geological Survey of Canada (GSC) and contracted to private industry. The radiometric products are available for download from the GSC website. The natural and artificial dose rates were calculated from the GRS data using the methodology described in the GSC manual on gamma-ray spectrometry. The artificial dose rates were calculated from the AGRS data using the methodology described in the GSC manual on alpha-ray spectrometry. The radiometric products are available for download from the GSC website. The radiometric products are available for download from the GSC website.

#### REFERENCES

Barnett, R.J., Henry, A.P., and Malin, D.  
1991. Gamma-ray spectrometry of Ontario, west-central sheet. Ontario Geological Survey Map 2504, scale 1:200 000.

Blom, J., Carson, J.M., Grant, J.A., and Ford, K.L.  
1987. A modified ternary radiometric mapping technique and its application to the South Coast of Newfoundland. Geological Survey of Canada Paper 87-14.

Carson, J.M., Holden, P.B., Ford, K.L., Grant, J.A., and Shives, R.B.K.  
2000a. Airborne Gamma Ray Spectrometry Compilation Series, South Lake, West Lake, Middle Lake, Ontario. Geological Survey of Canada Open File 4551, scale 1:100 000.

Carson, J.M., Holden, P.B., Ford, K.L., Grant, J.A., and Shives, R.B.K.  
2000b. Airborne Gamma Ray Spectrometry Compilation Series, Lake of the Woods, Ontario. Geological Survey of Canada Open File 4552, scale 1:100 000.

Carson, J.M., Holden, P.B., Ford, K.L., Grant, J.A., and Shives, R.B.K.  
2000c. Airborne Gamma Ray Spectrometry Compilation Series, Lake Huron, Ontario. Geological Survey of Canada Open File 4553, scale 1:100 000.

Carson, J.M., Holden, P.B., Ford, K.L., Grant, J.A., and Shives, R.B.K.  
2000d. Airborne Gamma Ray Spectrometry Compilation Series, Sudbury-Lake Superior, Ontario. Geological Survey of Canada Open File 4554, scale 1:100 000.

Carson, J.M., Holden, P.B., Ford, K.L., Grant, J.A., and Shives, R.B.K.  
2000e. Airborne Gamma Ray Spectrometry Compilation Series, Toronto, Ontario. Geological Survey of Canada Open File 4555, scale 1:100 000.

Carson, J.M., Holden, P.B., Ford, K.L., Grant, J.A., and Shives, R.B.K.  
2000f. Airborne Gamma Ray Spectrometry Compilation Series, Central and Eastern Ontario. Geological Survey of Canada Open File 4556, scale 1:100 000.

Carson, J.M., Holden, P.B., Ford, K.L., Grant, J.A., and Shives, R.B.K.  
2000g. Airborne Gamma Ray Spectrometry Compilation Series, Eastern Ontario. Geological Survey of Canada Open File 4557, scale 1:100 000.

Carson, J.M., Holden, P.B., Ford, K.L., Grant, J.A., and Shives, R.B.K.  
2000h. Airborne Gamma Ray Spectrometry Compilation Series, Northern Ontario. Geological Survey of Canada Open File 4558, scale 1:100 000.

Carson, J.M., Holden, P.B., Ford, K.L., Grant, J.A., and Shives, R.B.K.  
2000i. Airborne Gamma Ray Spectrometry Compilation Series, Western Ontario. Geological Survey of Canada Open File 4559, scale 1:100 000.

Carson, J.M., Holden, P.B., Ford, K.L., Grant, J.A., and Shives, R.B.K.  
2000j. Airborne Gamma Ray Spectrometry Compilation Series, North York, Ontario. Geological Survey of Canada Open File 4560, scale 1:100 000.

Carson, J.M., Holden, P.B., Ford, K.L., Grant, J.A., and Shives, R.B.K.  
2000k. Airborne Gamma Ray Spectrometry Compilation Series, South York, Ontario. Geological Survey of Canada Open File 4561, scale 1:100 000.

Carson, J.M., Holden, P.B., Ford, K.L., Grant, J.A., and Shives, R.B.K.  
2000l. Airborne Gamma Ray Spectrometry Compilation Series, Eastern Ontario. Geological Survey of Canada Open File 4562, scale 1:100 000.

Carson, J.M., Holden, P.B., Ford, K.L., Grant, J.A., and Shives, R.B.K.  
2000m. Airborne Gamma Ray Spectrometry Compilation Series, Northern Ontario. Geological Survey of Canada Open File 4563, scale 1:100 000.

Carson, J.M., Holden, P.B., Ford, K.L., Grant, J.A., and Shives, R.B.K.  
2000n. Airborne Gamma Ray Spectrometry Compilation Series, Western Ontario. Geological Survey of Canada Open File 4564, scale 1:100 000.

Carson, J.M., Holden, P.B., Ford, K.L., Grant, J.A., and Shives, R.B.K.  
2000o. Airborne Gamma Ray Spectrometry Compilation Series, Central and Eastern Ontario. Geological Survey of Canada Open File 4565, scale 1:100 000.

Carson, J.M., Holden, P.B., Ford, K.L., Grant, J.A., and Shives, R.B.K.  
2000p. Airborne Gamma Ray Spectrometry Compilation Series, Eastern Ontario. Geological Survey of Canada Open File 4566, scale 1:100 000.

Carson, J.M., Holden, P.B., Ford, K.L., Grant, J.A., and Shives, R.B.K.  
2000q. Airborne Gamma Ray Spectrometry Compilation Series, Northern Ontario. Geological Survey of Canada Open File 4567, scale 1:100 000.

Carson, J.M., Holden, P.B., Ford, K.L., Grant, J.A., and Shives, R.B.K.  
2000r. Airborne Gamma Ray Spectrometry Compilation Series, Western Ontario. Geological Survey of Canada Open File 4568, scale 1:100 000.

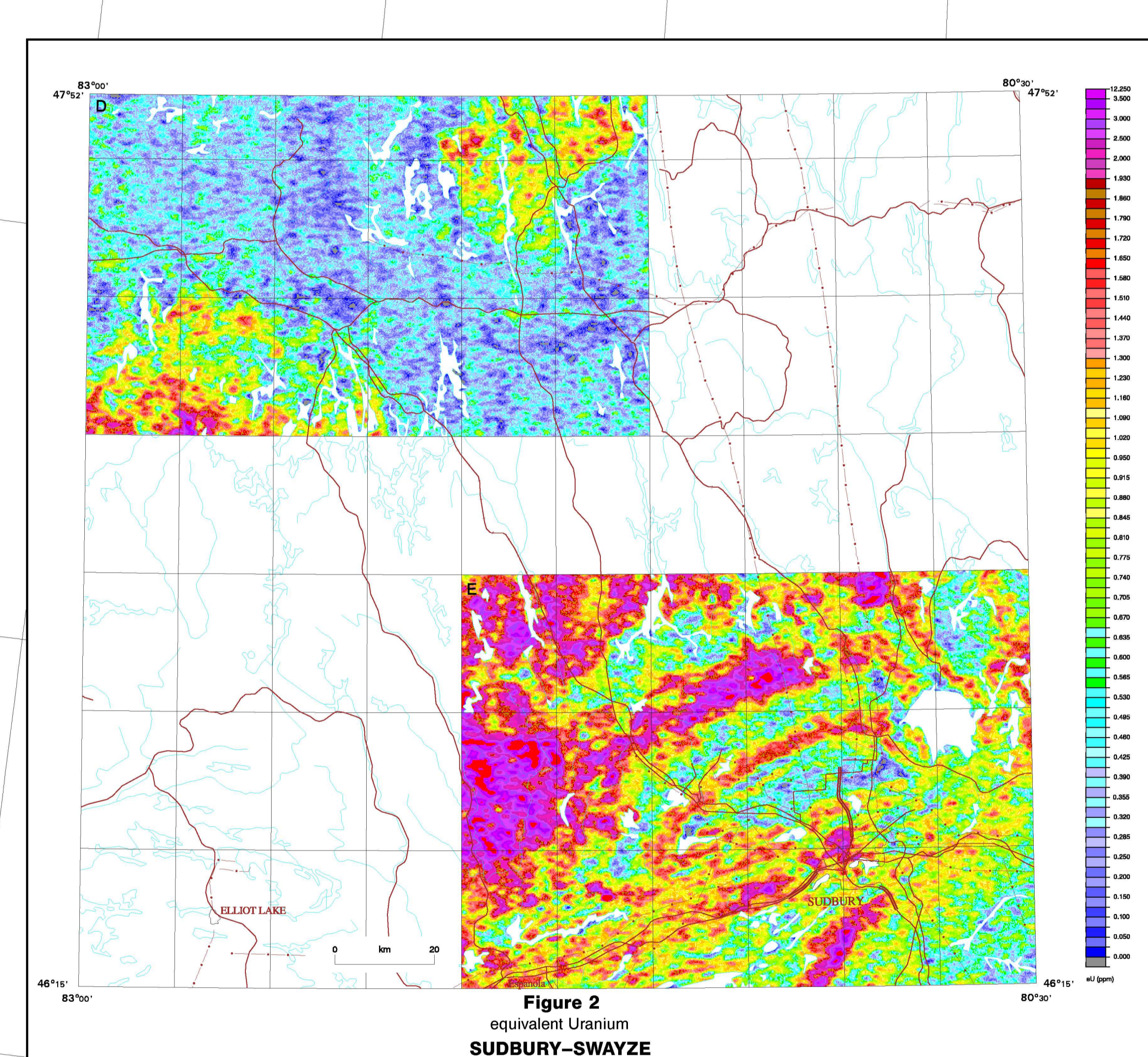


Figure 2 equivalent Uranium SUDBURY-SWAYZE

equivalent Uranium  
OPEN FILE 4551

AIRBORNE GAMMA RAY SPECTROMETRY COMPILATION  
ONTARIO  
ONTARIO

Scale 1:2 000 000 / Echelle 1:2 000 000

Map Scale: 0 50 100 Kilometers / 0 50 100 Miles

Geophysical compilation by J.M. Carson, P.B. Holden, K.L. Grant, J.A. Holden, and R.B.K. Shives

Digital cartography by J.A. Pratt, Earth Sciences Sector Information Division (ESS info)

This map was produced from processed information with the Cartographic Services Sector Quality Management System, Ottawa, registered to the Quality System ISO 9001:2000 standard

Projections: Lambert Conformal Conic Projection / Projection conique conforme de Lambert  
Standard Parallels 42°30' and 54°30' N / Parallèles de latitude convenues: 42°30' et 54°30' N  
North American Datum 1983 / Système de référence géodésique nord-américain, 1983  
© Her Majesty the Queen in Right of Canada, 2004 / © Sa Majesté le Reine du Canada 2004

Any revisions known to the user would be welcomed by the Geological Survey of Canada

Digital base map from data compiled by Geomatics Canada, modified by ESS info

