

DESCRIPTIVE NOTES

THE CORNWALLIS DISTRICT
Lower Devonian (Lower Cambrian) was deposited on a subsequent passive continental margin against the westward-trending Acadian orogenic belt...

STRATIGRAPHY

Geological map of the Cornwallis District is generally pale and the detailed stratigraphic and lithological information is provided on descriptive notes...

LITTLE CORNWALLIS ISLAND GEOLOGY

Little Cornwallis Island is the northern part of the Boothia Gulf and is bounded to the north by the west of Boothia Gulf and to the east by the east of Boothia Gulf...

The western border of the island is characterized by two east-trending faults, namely by the juxtaposition of the Devonian and the Precambrian rocks...

The western border of the island is characterized by two east-trending faults, namely by the juxtaposition of the Devonian and the Precambrian rocks...

The western border of the island is characterized by two east-trending faults, namely by the juxtaposition of the Devonian and the Precambrian rocks...

The western border of the island is characterized by two east-trending faults, namely by the juxtaposition of the Devonian and the Precambrian rocks...

The western border of the island is characterized by two east-trending faults, namely by the juxtaposition of the Devonian and the Precambrian rocks...

The western border of the island is characterized by two east-trending faults, namely by the juxtaposition of the Devonian and the Precambrian rocks...

The western border of the island is characterized by two east-trending faults, namely by the juxtaposition of the Devonian and the Precambrian rocks...

The western border of the island is characterized by two east-trending faults, namely by the juxtaposition of the Devonian and the Precambrian rocks...

The western border of the island is characterized by two east-trending faults, namely by the juxtaposition of the Devonian and the Precambrian rocks...

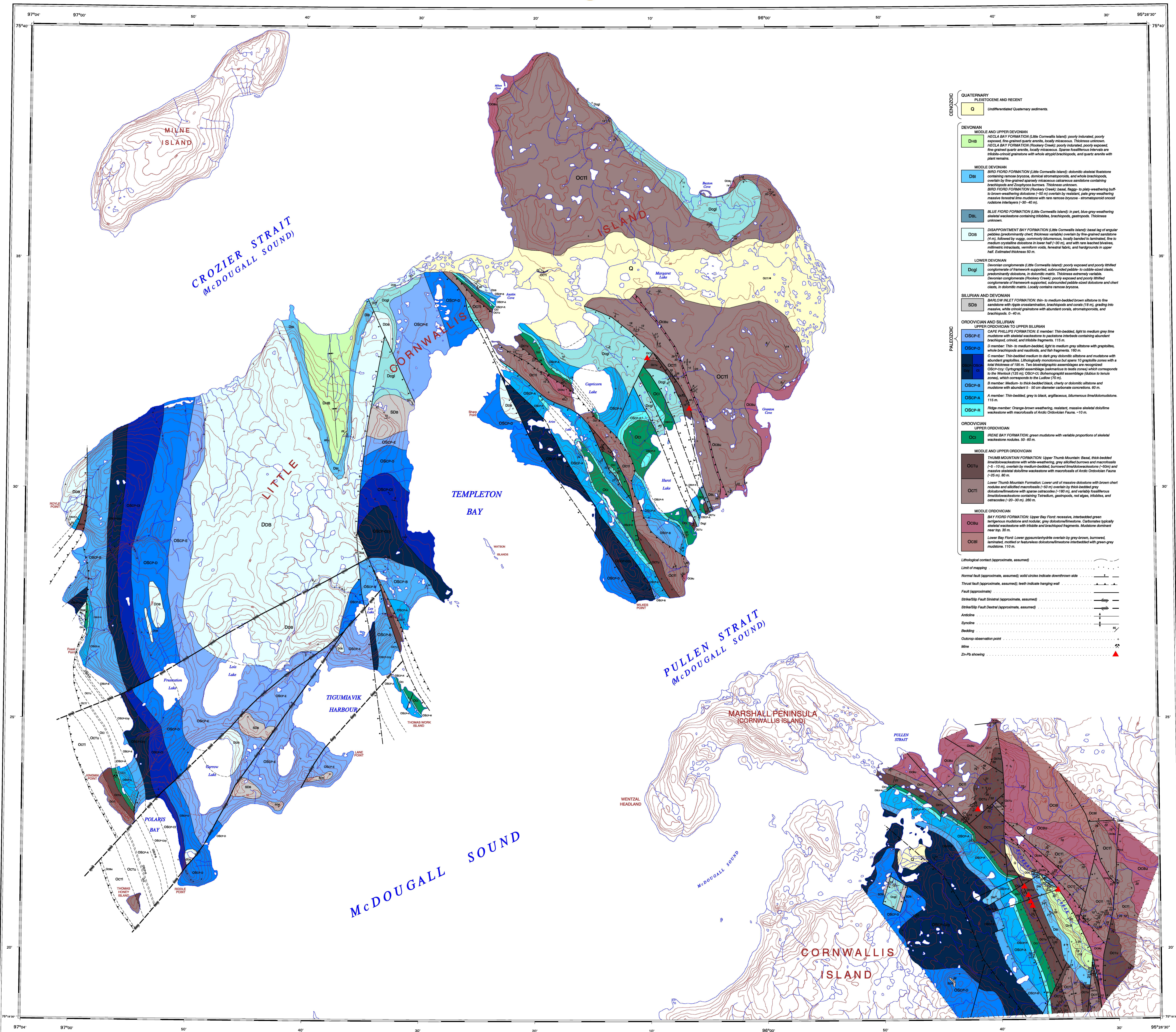
The western border of the island is characterized by two east-trending faults, namely by the juxtaposition of the Devonian and the Precambrian rocks...

The western border of the island is characterized by two east-trending faults, namely by the juxtaposition of the Devonian and the Precambrian rocks...

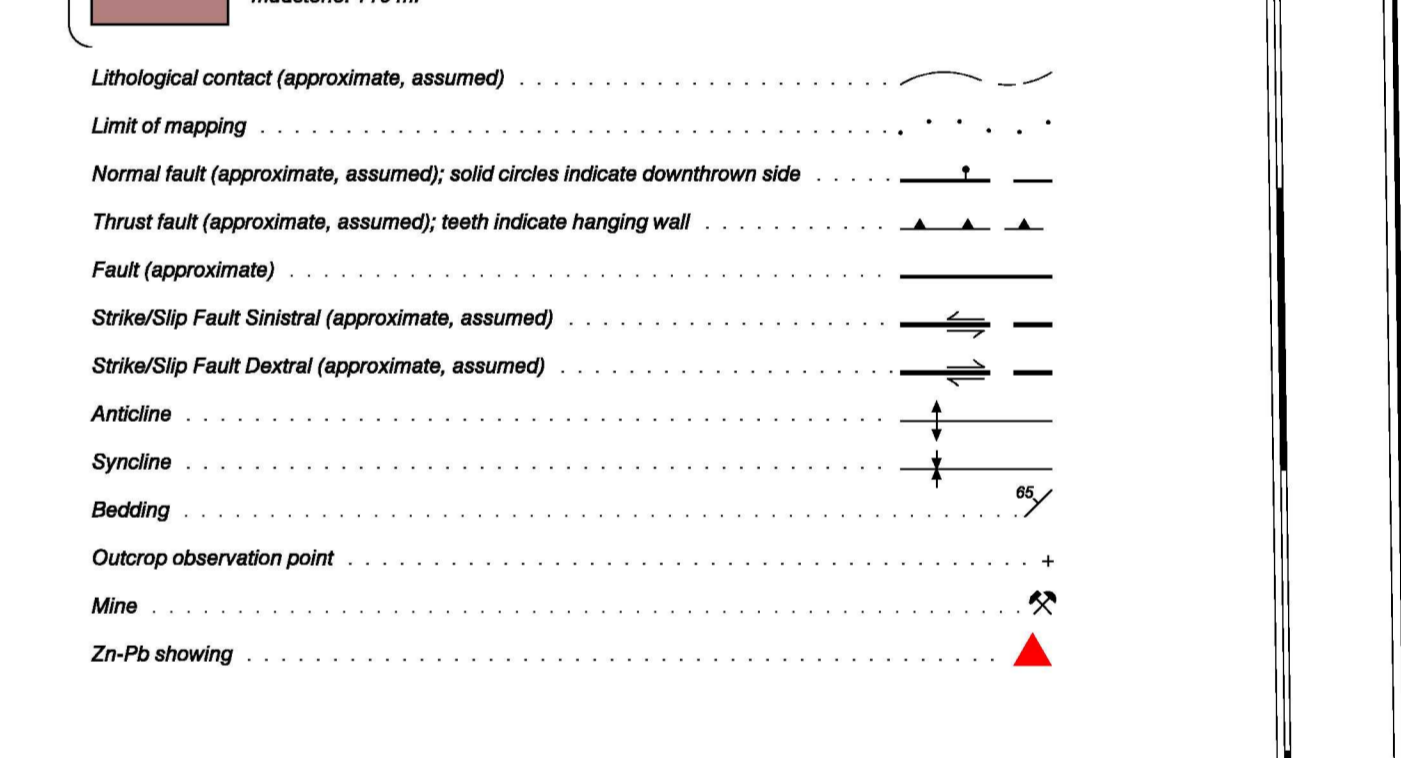
The western border of the island is characterized by two east-trending faults, namely by the juxtaposition of the Devonian and the Precambrian rocks...

The western border of the island is characterized by two east-trending faults, namely by the juxtaposition of the Devonian and the Precambrian rocks...

The western border of the island is characterized by two east-trending faults, namely by the juxtaposition of the Devonian and the Precambrian rocks...



Legend table with columns for Geologic Age (Quaternary, Devonian, Silurian and Devonian, Ordovician and Silurian, Middle and Upper Devonian, Middle Devonian, Lower Devonian) and Lithological Unit (DDB, DDB-C, DDB-D, DDB-E, DDB-F, DDB-G, DDB-H, DDB-I, DDB-J, DDB-K, DDB-L, DDB-M, DDB-N, DDB-O, DDB-P, DDB-Q, DDB-R, DDB-S, DDB-T, DDB-U, DDB-V, DDB-W, DDB-X, DDB-Y, DDB-Z). Includes descriptions of rock types and thicknesses.

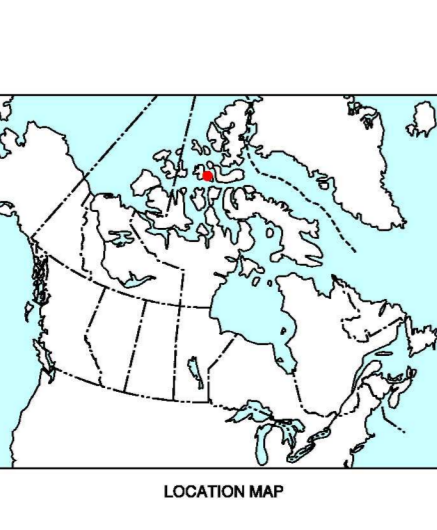
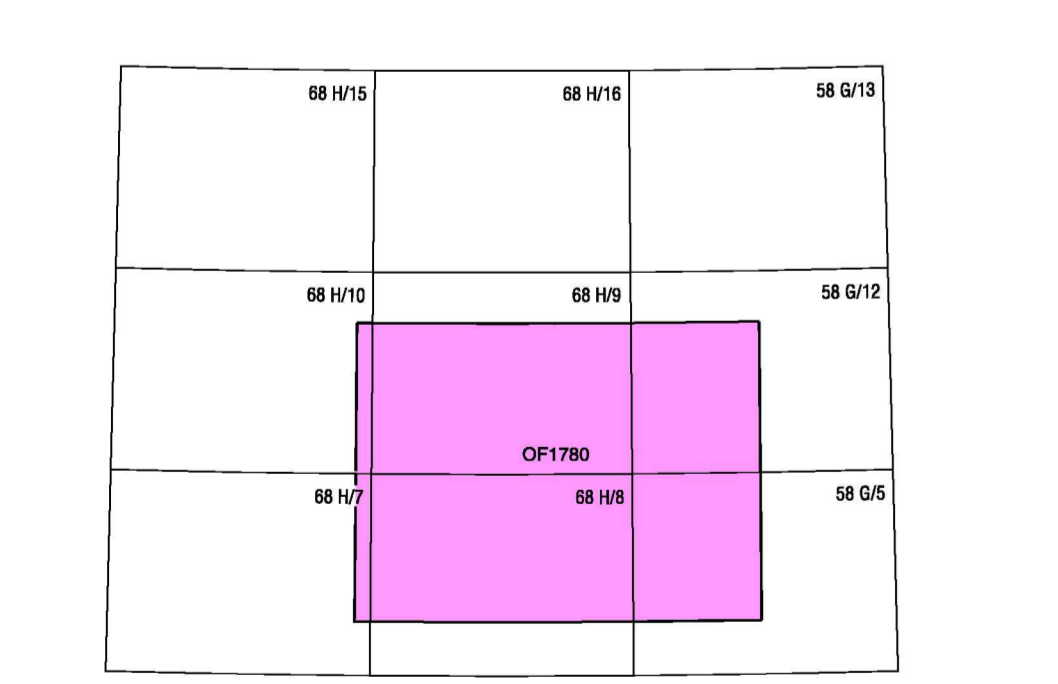


ACKNOWLEDGMENTS

This work is part of the joint CRD-080 (Edgway) Arctic Zone project. Mapping on Little Cornwallis Island was supported by Polar Continental Shelf Project (PCSP) and Northern and Arctic Regions Service, and assistance was provided by Charles C. G. Gilbert, Canada, and Northern and Arctic Regions Service, and assistance was provided by Charles C. G. Gilbert, Canada, and Northern and Arctic Regions Service...

REFERENCES

Christensen, J.N., Hestley, A.N., Lepp, K.E., Rendell, R.M., and Koster, S.E. 1986. Dredge cores of the Boothia Gulf and the Foul Bay area, north of the Boothia Gulf, Northwest Territories, Canada. Current Research 2003-04, 10 p.
Dewing, K. and Turner, E.C. 1980. Structural geology of the Cornwallis Islands, Arctic Islands, Nunavut. Geological Survey of Canada, Current Research 2003-04, 9 p.
Hartman, J.C. 1980. Mafic sills on Little Cornwallis Island, Arctic Islands, Nunavut. Geological Survey of Canada, Bulletin 472, 33 p.
Hartman, J.C. and de Wit, P. 1980. Basaltic sills on Little Cornwallis Island, Arctic Islands, Nunavut. Geological Survey of Canada, Paper 80-1, 5 sheets.
Thompson, K. 1986. Geology of Cornwallis Island and neighbouring smaller islands, District of Franklin, Northwest Territories. Geological Survey of Canada, Map 1200, 1:250,000.
Turill, H.F., Ed. 1991. Geology of the Inuvialut Region and Arctic Platform of Arctic Canada. Geological Survey of Canada, Geology of Canada, vol. 3 (Geological Society of America, Geological Survey of Canada, 1991), 1:250,000.
Turner, E.C. and Dewing, K. 1980. Geology of Rookery Creek and Little Cornwallis Island, Nunavut. Geological Survey of Canada, Current Research 2003-04, 11 p.



Geology by E.C. Turner and K. Dewing, 2002
Geological compilation by E.C. Turner and K. Dewing, 2003
Digital cartography by C. Gilbert, Canada - Numerical Geoscience Office and P. St-Amant, Earth Sciences Sector Information Division (ESS)
This map was produced from processes that conform to the ESS Info Publishing Services Subdivision Quality Management System, registered to the ISO 9001:2000 standard

OPEN FILE 1780
GEOLOGY
LITTLE CORNWALLIS ISLAND AND ROOKERY CREEK (CORNWALLIS ISLAND)
HIGH ARCTIC
NUNAVUT
Scale 1:50 000 / Échelle 1:50 000
Elevations in metres above mean sea level. Contour interval 10 m

Any relations or additional geological information known to the user would be welcomed by the Geological Survey of Canada
Digital base map from data compiled by Geomatics Canada, modified by Canada Mineral Geoscience Office
Some geographical names subject to revision
Proximity to the North Magnetic Pole causes the magnetic compass to be useless in this area

OPEN FILE DOSSIER PUBLIC 1780
GEOLOGIE DE L'ILE DE CORNWALLIS ET DE LA BAIE DE ROOKERY (ILE DE CORNWALLIS)
Scale 1:50 000
Recommended citation: Turner, E.C. and Dewing, K. 2004. Geology, Little Cornwallis Island and Rookery Creek (Cornwallis Island), High Arctic, Nunavut. Geological Survey of Canada, Open File 1780, scale 1:50 000.



Universal Transverse Mercator Projection
North American Datum 1983
© Her Majesty the Queen in Right of Canada 2004

Projection transverse universelle de Méthuer
Système de référence géodésique nord-américain, 1983
© Sa Majesté la Reine en chef du Canada 2004