

Figure 3. Equivalent uranium map for the Mount Pleasant area compiled from detailed, 250 metre line spaced, airborne gamma ray spectrometry data. Scale 1:150 000

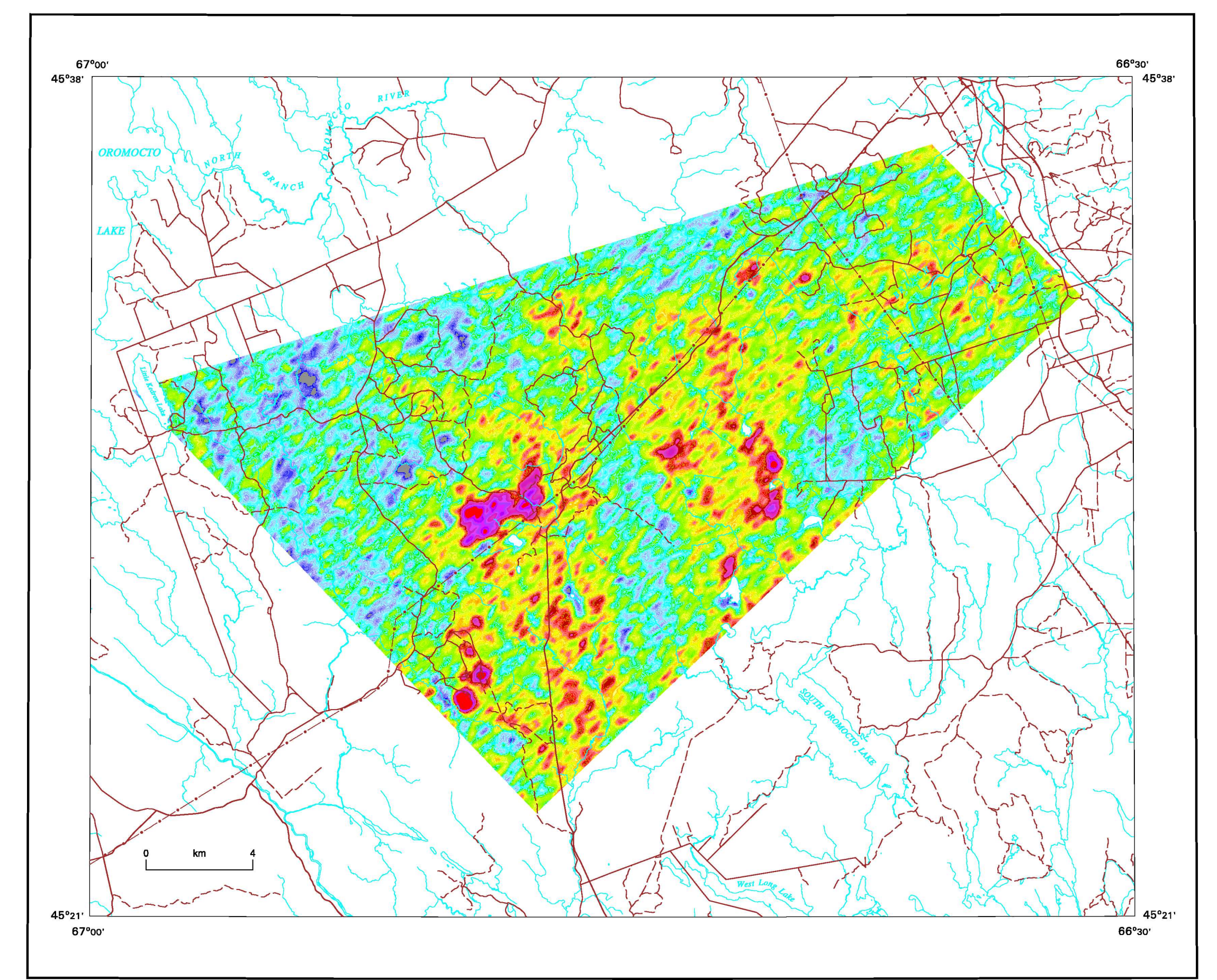
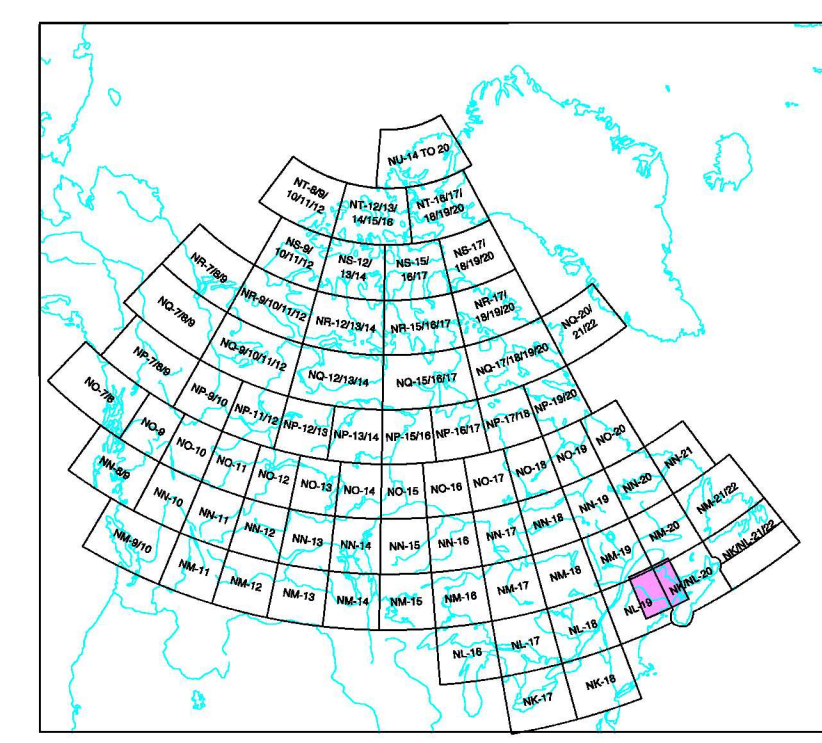


Figure 3. Equivalent uranium map for the Mount Pleasant area compiled from detailed, 250 metre line spaced, airborne gamma ray spectrometry data. Scale 1:150 000



Recommended citation:
Carson, J.M., Holman, P.B., Ford, K.L., Grant, J.A., and
Shives, R.B.K.
2004. Airborne Gamma Ray Spectrometry Compilation, equivalent Uranium
New Brunswick, New Brunswick; Geological Survey of Canada,
Open File 648R, scale 1:500 000.