

Figure 2. Potassium map for Bathurst, Restigouche, and Kedgewick areas of northern New Brunswick compiled from detailed, 200 metre line spaced, airborne gamma ray spectrometry data. Scale 1:500 000.

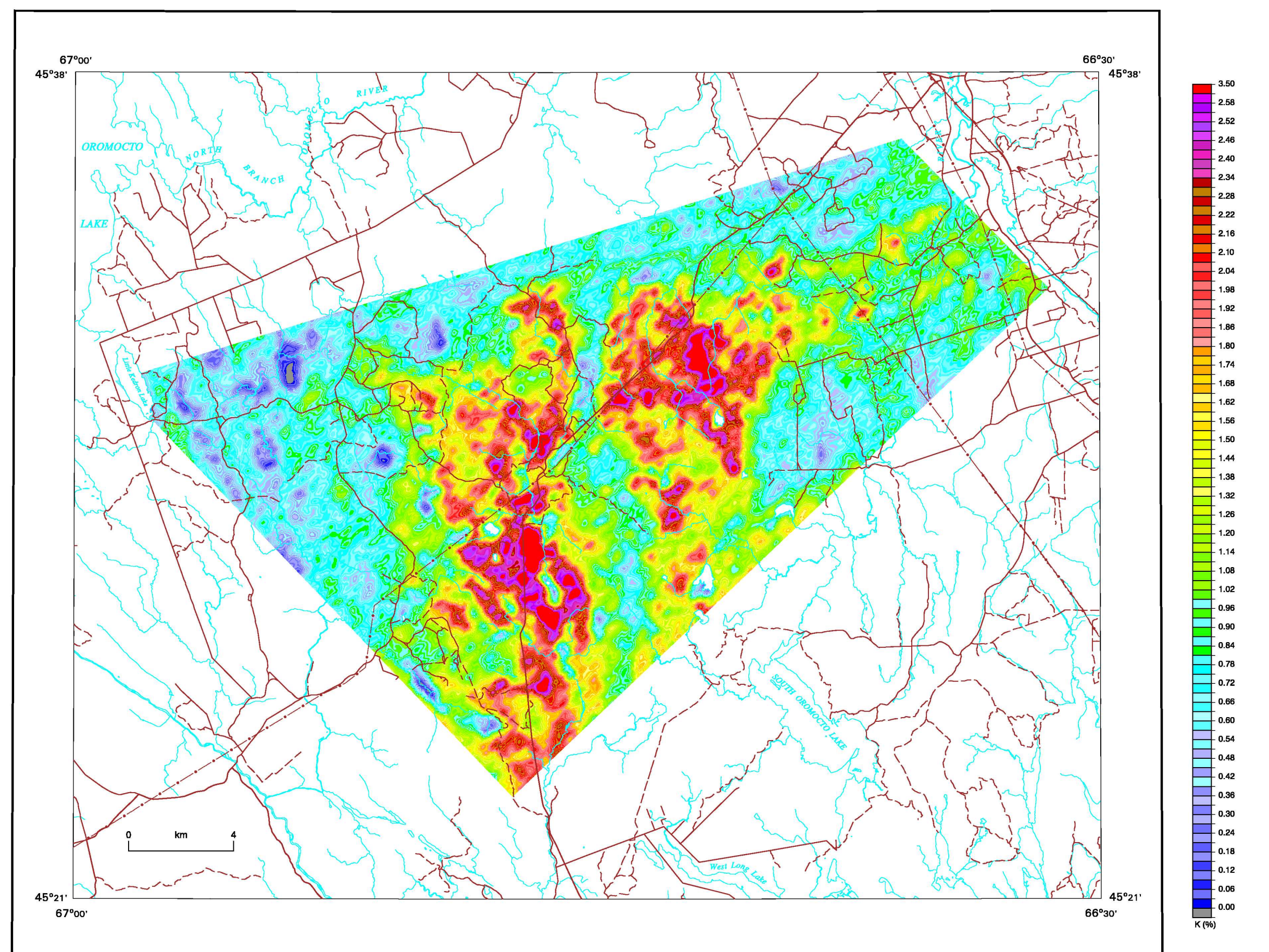


Figure 3. Potassium map for the Mount Pleasant area compiled from detailed, 250 metre line spaced, airborne gamma ray spectrometry data. Scale 1:150 000.

DESCRIPTIVE NOTES

The Potassium Map of New Brunswick is a set of eight 1:500 000 regional compilations that include three of the following: potassium, uranium, and thorium. The potassium map is the first of its kind in the province. It was compiled from data collected along flight lines of an aircraft-mounted gamma-ray spectrometer (AGRS) in 1992. These data were processed using the techniques of the Geological Survey of Canada (GSC) and the University of Ottawa. The potassium map is the first of its kind in the province. It was compiled from data collected along flight lines of an aircraft-mounted gamma-ray spectrometer (AGRS) in 1992. These data were processed using the techniques of the Geological Survey of Canada (GSC) and the University of Ottawa. The potassium map is the first of its kind in the province. It was compiled from data collected along flight lines of an aircraft-mounted gamma-ray spectrometer (AGRS) in 1992. These data were processed using the techniques of the Geological Survey of Canada (GSC) and the University of Ottawa.

REFERENCES

- Brown, J., Caron, J.M., Grant, J.A., and Ford, K.L. 1987. A regional geophysical synthesis: magnetic, gravity, and geology in the South Coast of New Brunswick. Geological Survey of Canada, Paper 87-1.
- McClintock, S.A. 1980. The Lake Umbagog Basin: a geophysical synthesis. Geological Survey of Canada, Paper 80-1.
- McLennan, S.M. 1989. Geology, geochemistry and related mineral deposits of the Saint George Batholith, Chatham, Coombs and Kings Counties, New Brunswick. Department of Natural Resources and Energy, Mineral Resources, Mineral Resources Report 1, 189 p.
- Prokop, A.D., and Soper, A.J. 1980. Geology and geophysics of the Saint George Batholith, Chatham, Coombs and Kings Counties, New Brunswick. Department of Natural Resources and Energy, Mineral Resources, Mineral Resources Report 1, 189 p.
- Shives, R.M., Ford, K.L., and Chabannon, B.W. 1989. Geology and geophysics of the Saint George Batholith, Chatham, Coombs and Kings Counties, New Brunswick. Department of Natural Resources and Energy, Mineral Resources, Mineral Resources Report 1, 189 p.
- Shives, R.M., Chabannon, B.W., and Ford, K.L. 1987. The geology and geophysics of the Saint George Batholith, Chatham, Coombs and Kings Counties, New Brunswick. Department of Natural Resources and Energy, Mineral Resources, Mineral Resources Report 1, 189 p.
- Thomas, M.D., Walker, J.A., Keating, F., Shives, R., Kite, F., and Goodfellow, W.D. 2000. Hydrothermal alteration of the Saint George Batholith, Chatham, Coombs and Kings Counties, New Brunswick. Geological Survey of Canada, Open File 500.

Geographic compilation by J.M. Caron, P.B. Holmes, K.L. Ford, J.A. Grant, and R.M. Shives.

Digital cartography by J.A.Y. Pratt, Earth Sciences Sector Information Division (ESS-Info).

This map was produced from processes in conformance with the Cartographic Services Section Quality Management System, Canada, registered to the Quality System ISO 9001:2000.

Any incidents related to the map should be submitted to the Geological Survey of Canada.

Digital base map from data compiled by Geomatics Canada, modified by ESS-Info.

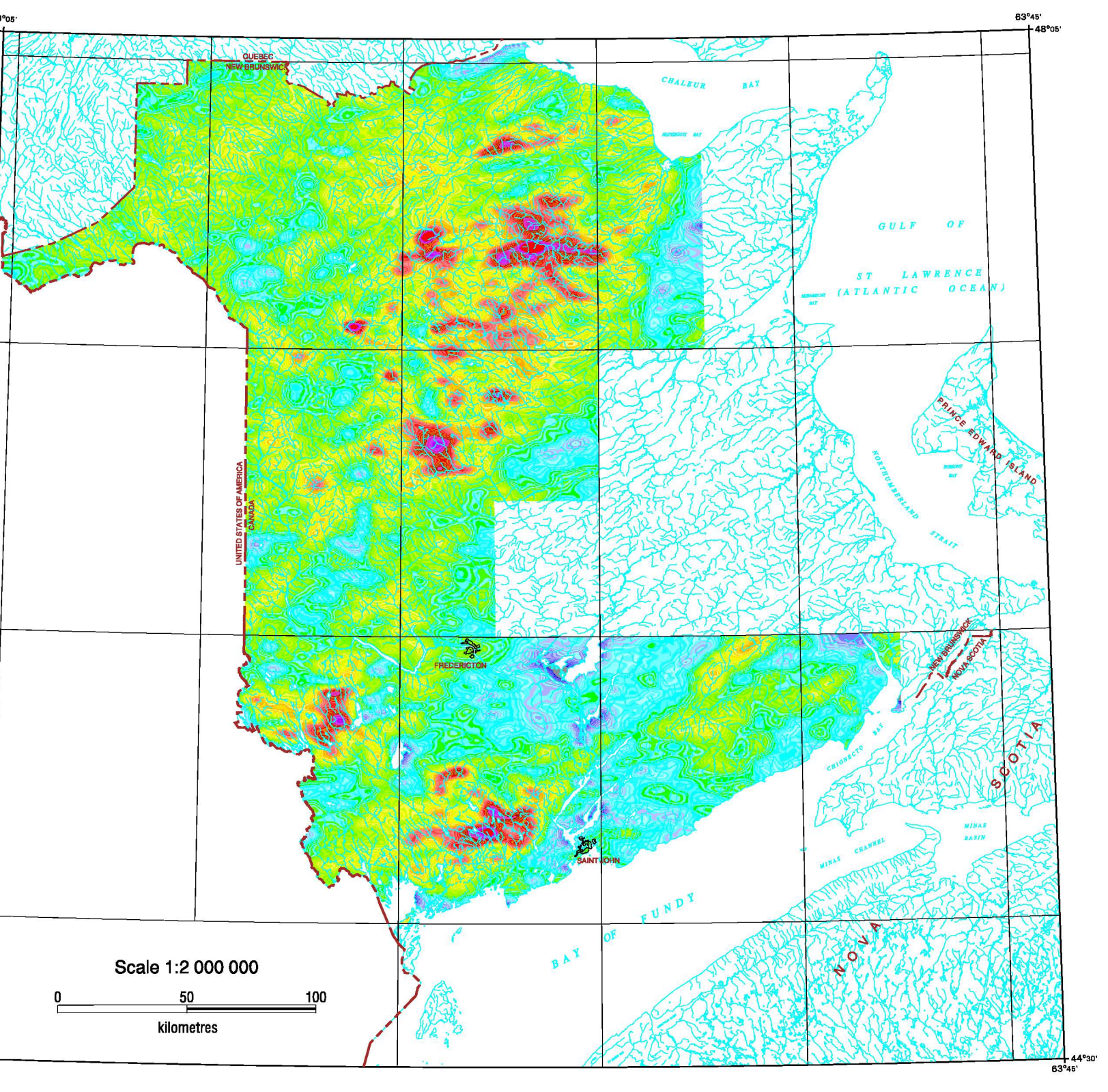


Figure 1. Potassium map compiled from reconnaissance, 5000 metre line spaced, airborne gamma ray spectrometry data.

Potassium
OPEN FILE 4495
AIRBORNE GAMMA RAY SPECTROMETRY COMPILATION
NEW BRUNSWICK
NEW BRUNSWICK
Scale 1:500 000 / Échelle 1:500 000

Universal Transverse Mercator Projection
North American Datum 1927
© Her Majesty the Queen in Right of Canada 2004

OPEN FILE
DOSSIER PUBLIC
4495
2004

Recommended citation:
Caron, J.M., Holmes, P.B., Ford, K.L., Grant, J.A., and Shives, R.M. 2004. Airborne Gamma Ray Spectrometry Compilation, Potassium, New Brunswick, New Brunswick. Geological Survey of Canada, Open File 4495, Issue 1:500 000.