



INTRODUCTION
DESIGNATED AREAS
REVISIONS AND REVISIONS

LOCALITY LIST
LITHOLOGICAL CORRELATION
DIP HISTORY
AGE DATING
GEOLOGY OF THE COMMITTEE BAY AREA

PLUTONIC ROCKS
METAMORPHISM
ECONOMIC GEOLOGY

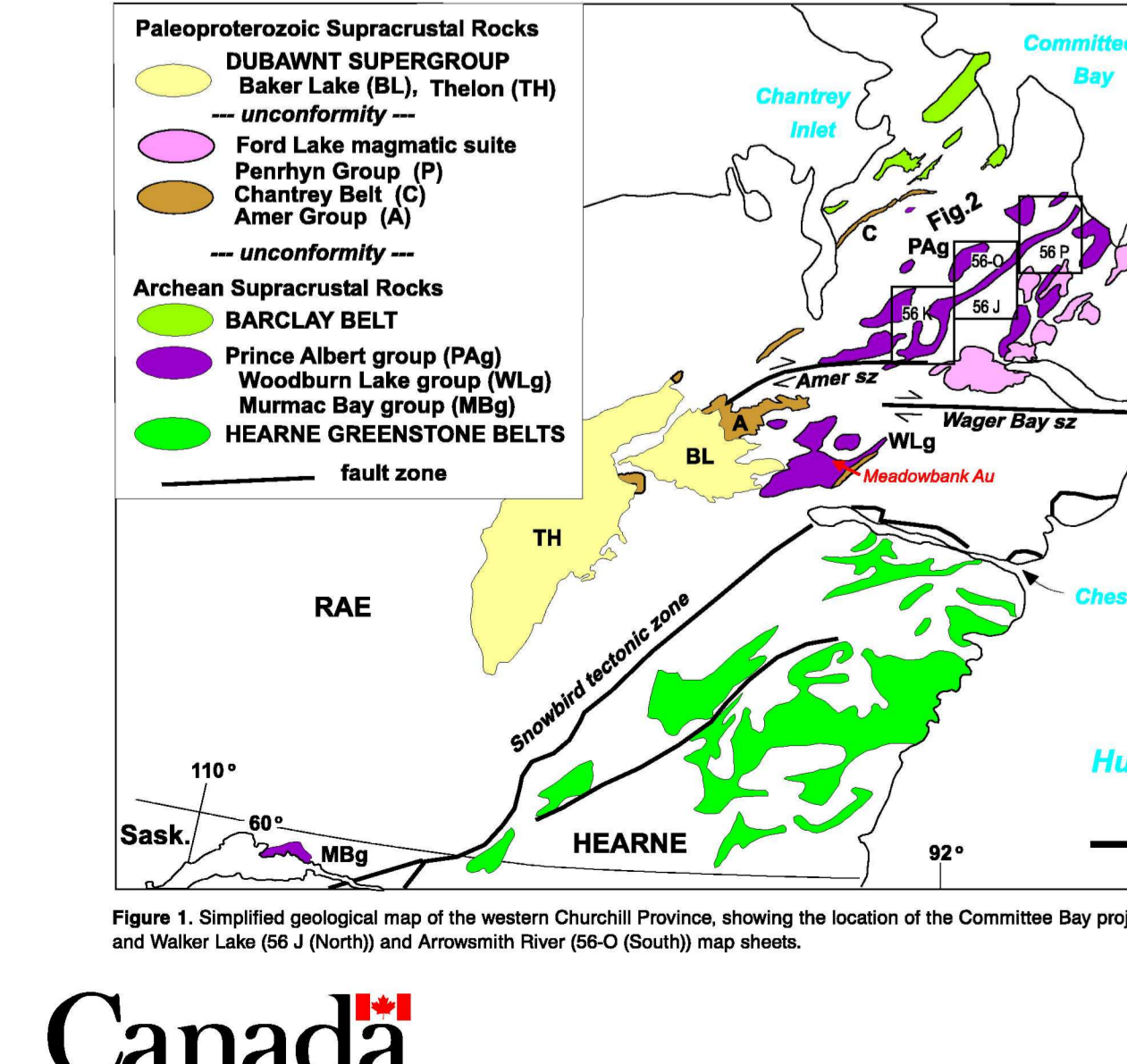
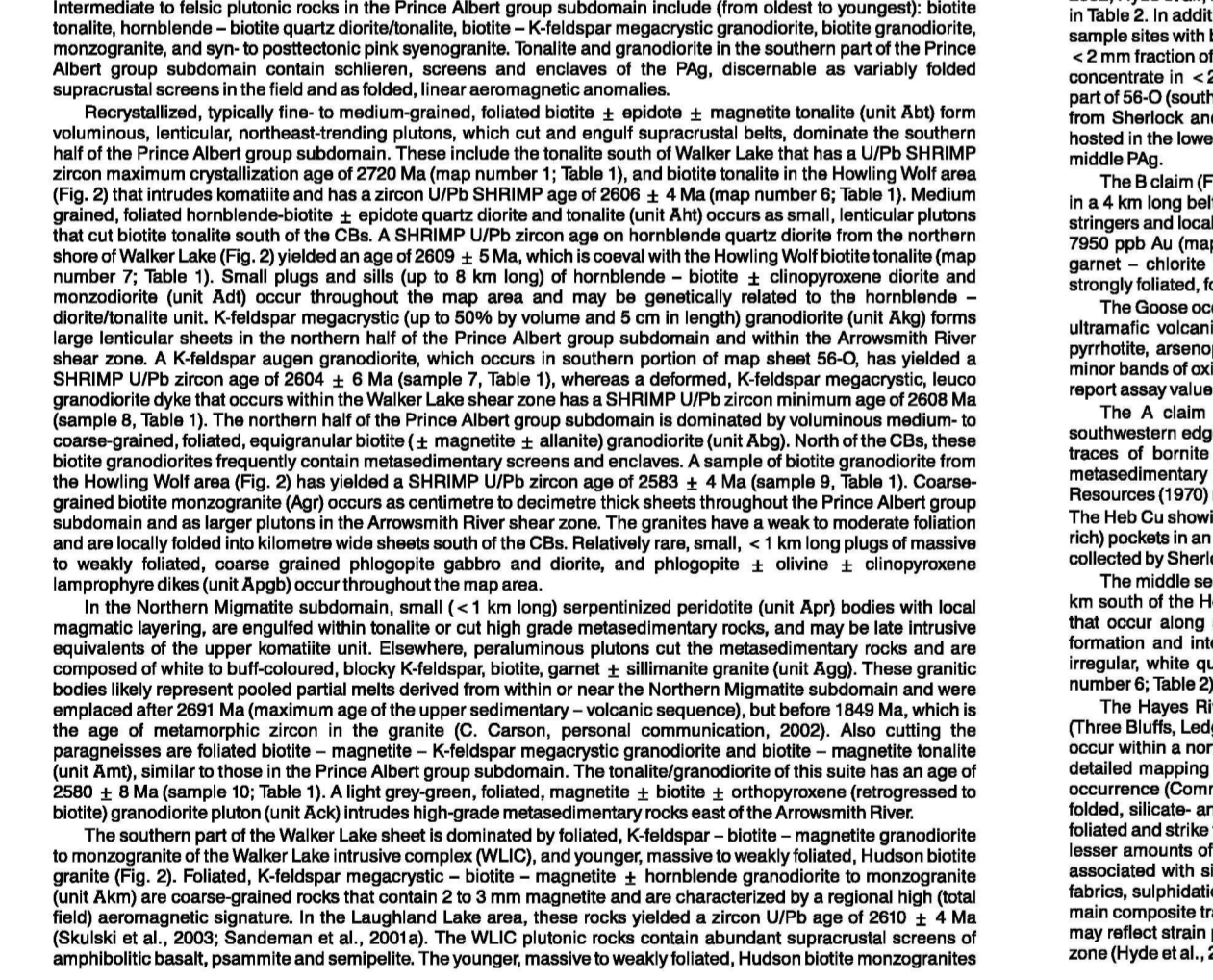


Figure 1. Simplified geological map of the western Churchill Region...

APPEALS
REFERENCES

ARROWSMITH RIVER SHEAR ZONE
DE STRUCTURES AND THE WALKER LAKE SHEAR ZONE

PLUTONIC ROCKS
METAMORPHISM
ECONOMIC GEOLOGY

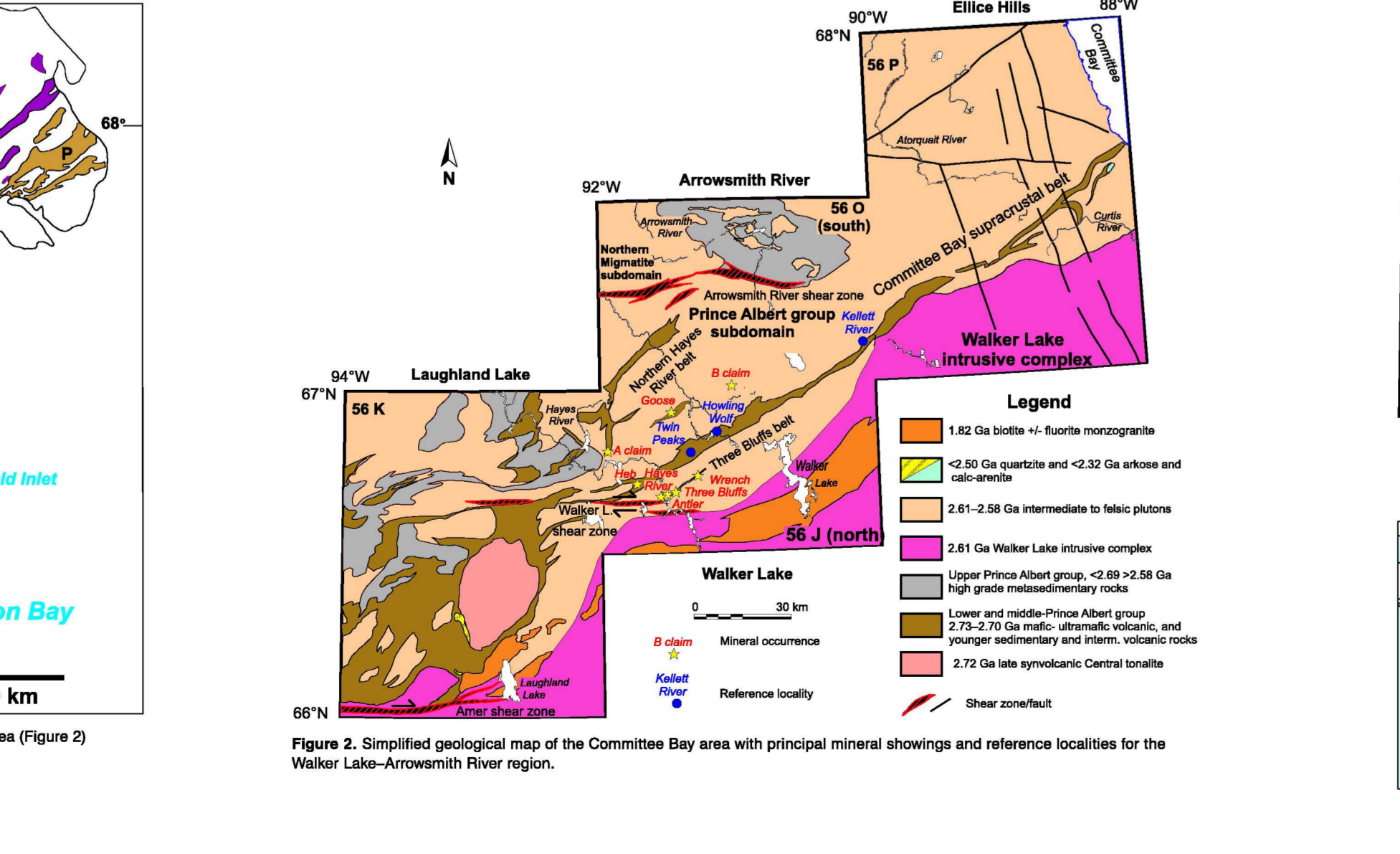
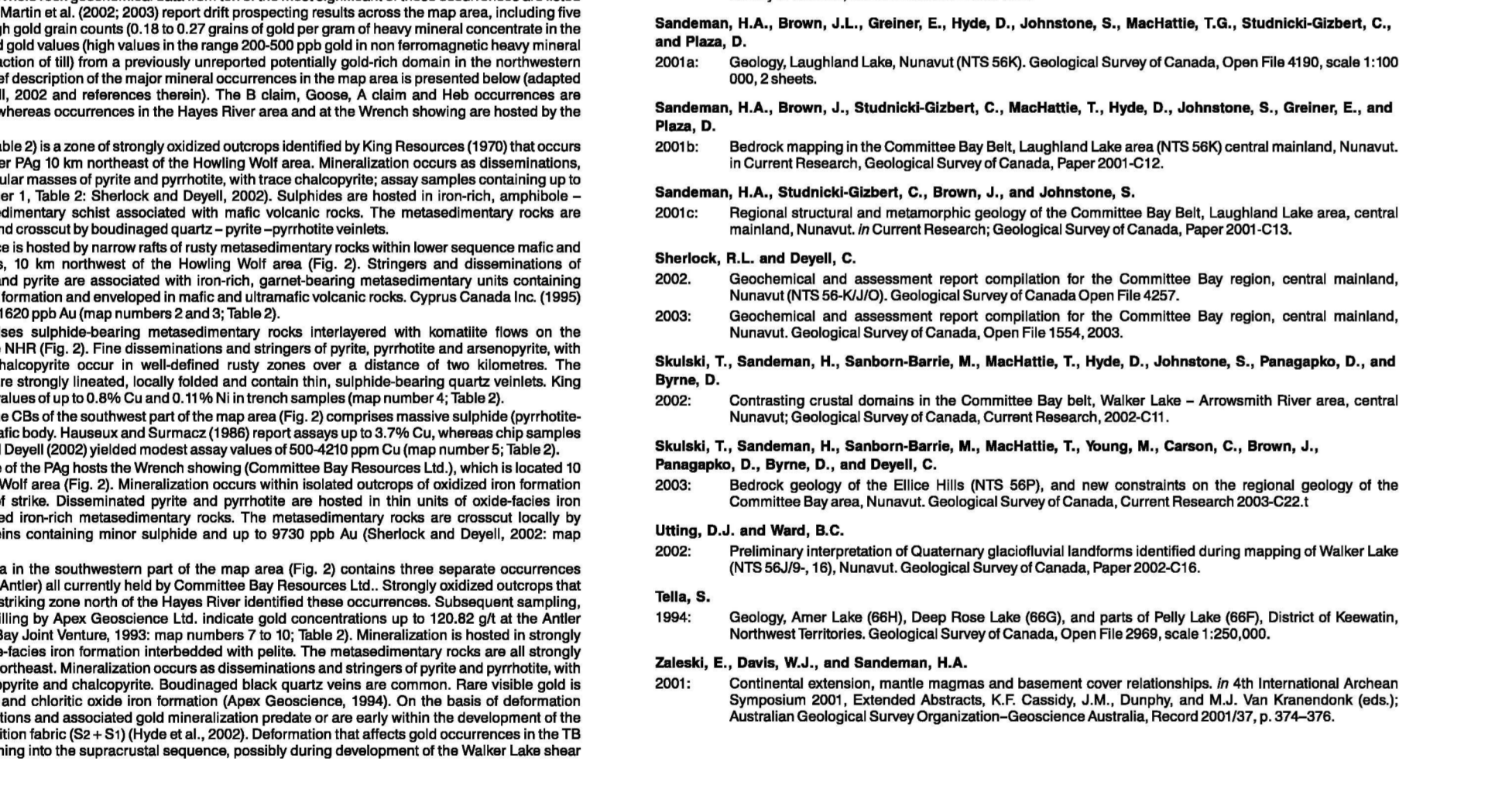
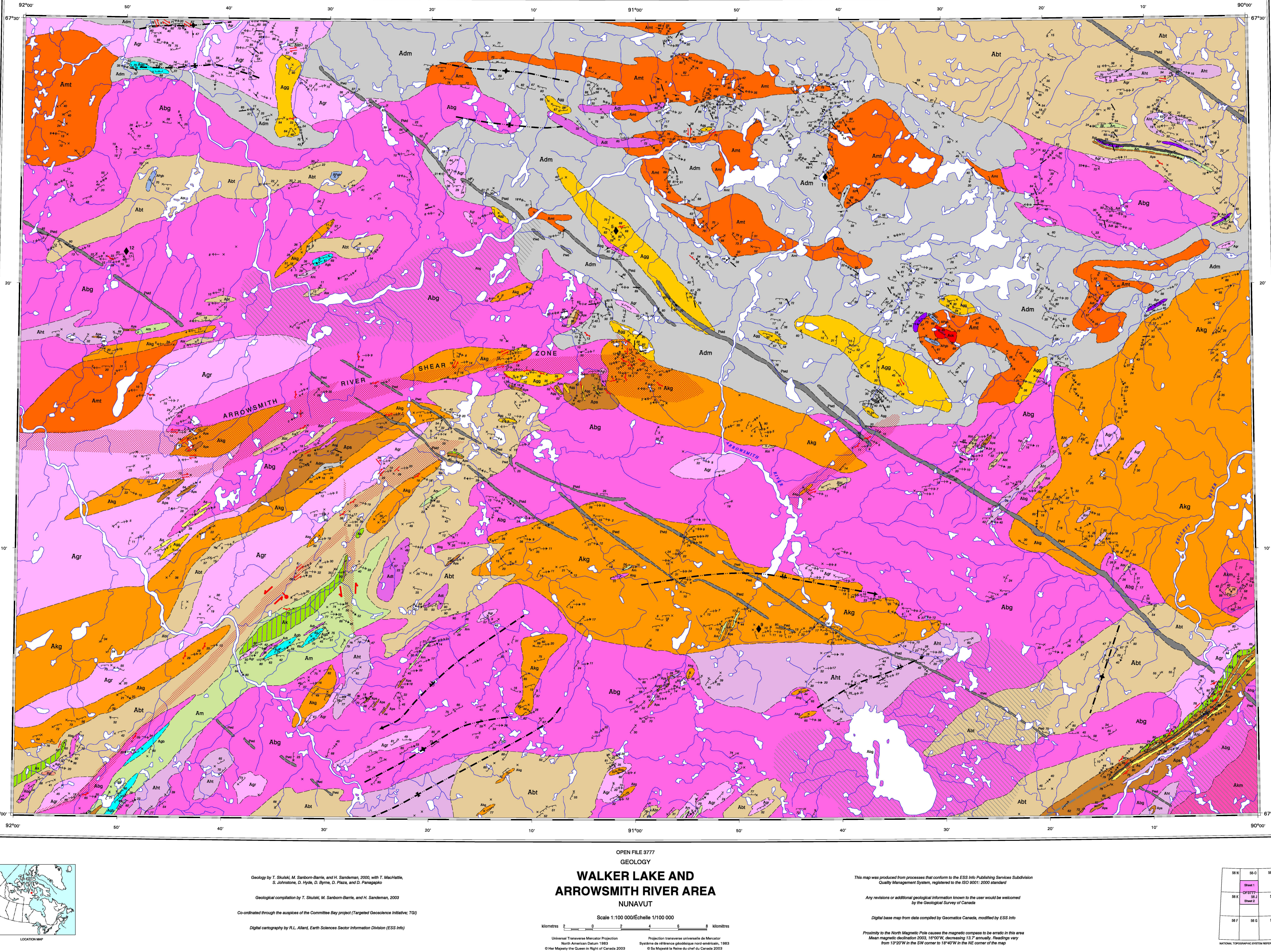


Figure 2. Simplified geological map of the Committee Bay area with principal mineral showings and reference localities for the Walker Lake-Arrowsmith River region.



Geology by T. Shakkai, M. Sarbonne-Baril, and J. Sanderson, 2001...

- LEGEND
QUATERNARY
PROTEROZOIC
ARCHEAN AND/OR PALEOPROTEROZOIC
ARCHEAN
METAMORPHISM

Table 1. Lithology of the Walker Lake and Arrowsmith River area, Nunavut, samples shown on map as black diamonds with locality number.

Table 2. Selection of mineralized samples, Walker Lake and Arrowsmith River area, samples shown on map as yellow star with locality number.

OPEN FILE 3777
GEOLOGY
WALKER LAKE AND ARROWSMITH RIVER AREA
NUNAVUT
Scale 1:100 000