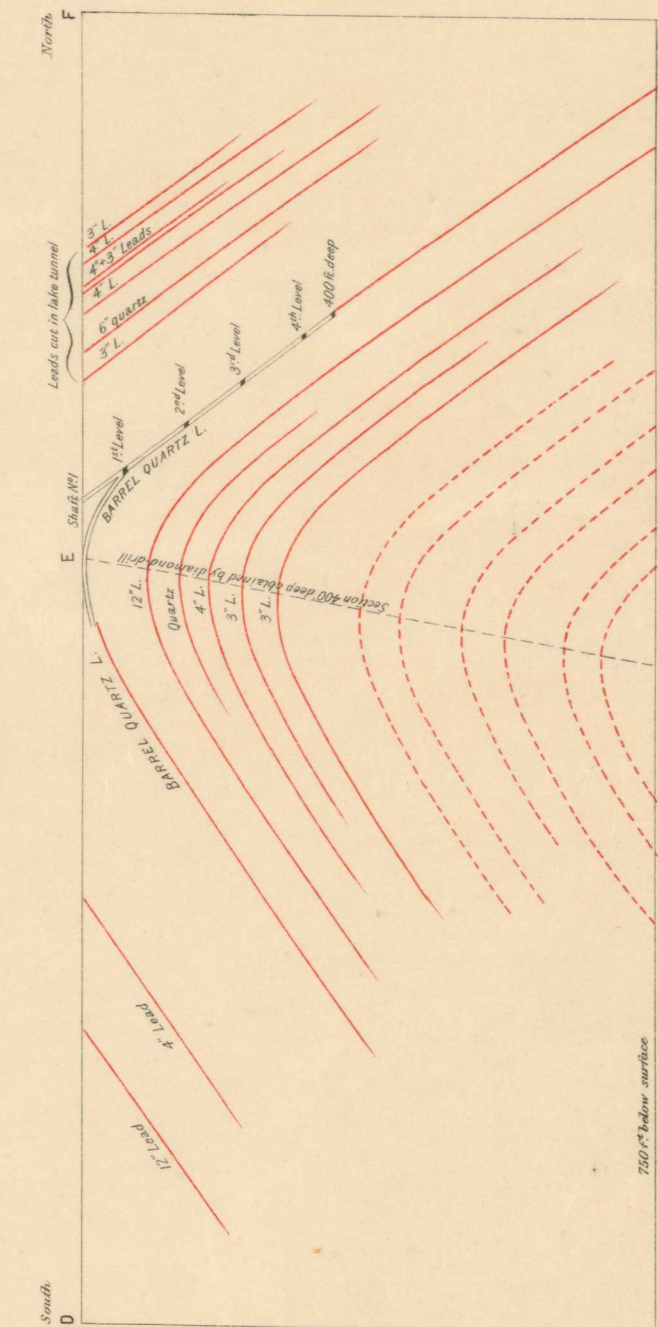
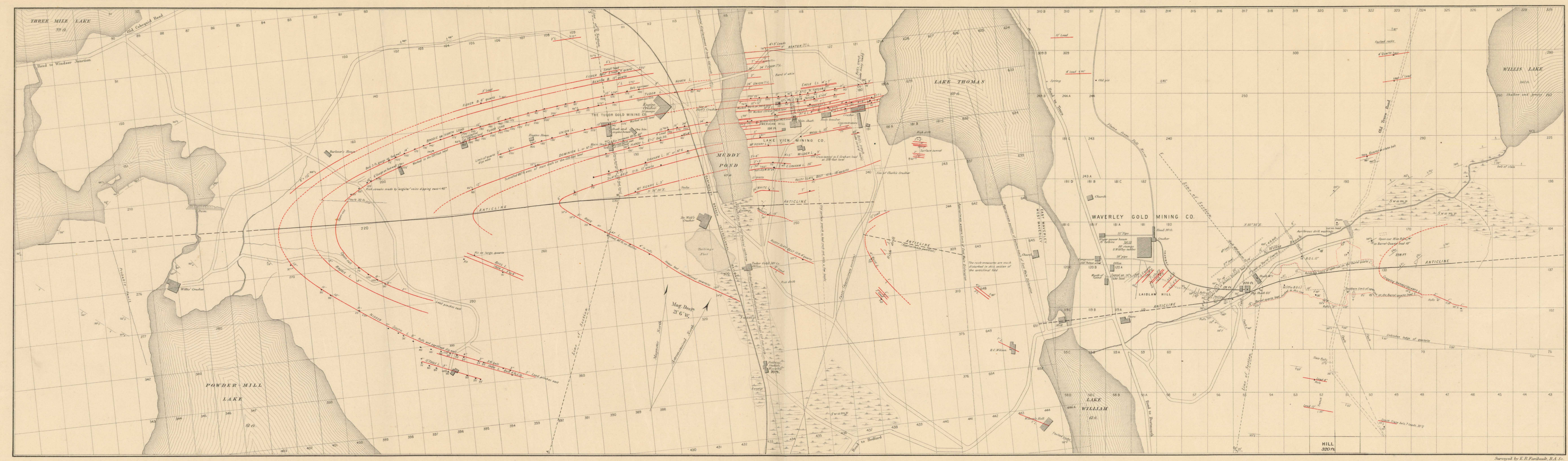
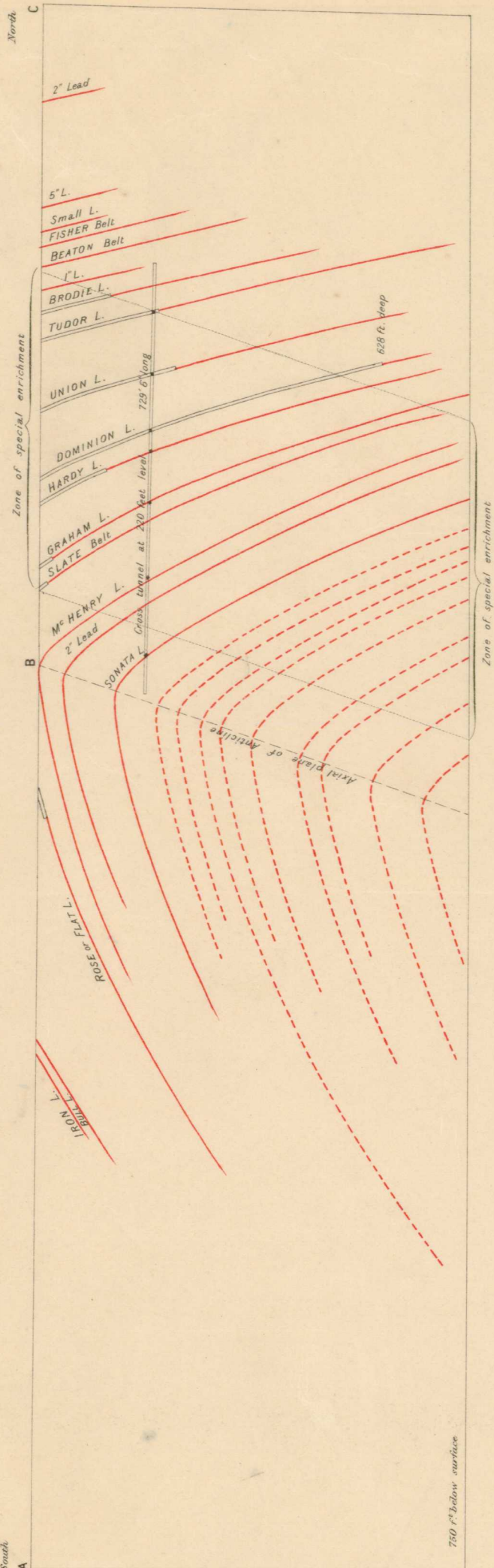


- Vertical dip
- Dip and strike of strata
- Interbedded quartz veins (leads)
- Dip of veins
- Dip of rolls in veins
- Thickness of veins in inches
- Depth of shaft in feet measured on the incline
- Glacial striae
- Roads
- Wood roads
- Faults
- 320 ft. Elevations above sea level



PLAN and SECTIONS
 WAVERLEY GOLD DISTRICT, HALIFAX CO.
 NOVA SCOTIA

Scale 250 Feet to 1 inch

This map has been reprinted from a scanned version of the original map. Reproduction par numérisation d'une carte sur papier.

Surveyed by E. R. Fairbank, R.A.S.