

**DESCRIPTIVE NOTES**

This Radiometric Map of New Brunswick is one of eight 1:500 000 regional compilations that include three regional radiometric maps of the Atlantic Provinces. The compilation was prepared by the Geological Survey of Canada (GSC) and the provincial geological surveys of New Brunswick, Nova Scotia and Prince Edward Island. The compilation was prepared using data from the 1990s and 2000s. The map shows the eU/K ratio (ppm%) for the entire province. The map is a compilation of data from the 1990s and 2000s. The map shows the eU/K ratio (ppm%) for the entire province. The map is a compilation of data from the 1990s and 2000s.

**REFERENCES**

- Brown, J., Carson, J.M., Grant, J.A., and Ford, K.L. 1997. A regional radiometric mapping strategy and its application to the South Coast of New Brunswick. Geological Survey of Canada, Paper 97-1.
- McClintock, S.P. 1980. The Late Devonian Mount Pleasant complex: stratigraphy, mineralogy, geochemistry and tectonic setting. Ph.D. thesis, Dalhousie University, Halifax, Nova Scotia.
- McLennan, S.M. 1989. Geology, geochemistry and related mineral deposits of the Saint George Batholith, Chatham, Queens and Kings Counties, New Brunswick. Department of Natural Resources and Energy, Atlantic Region, Atlantic Region Report 79-9.
- Prosser, A. and Stewart, J.A. 2002. Geologic profile across the Fundy region from the Fundy Coast to the Fundy Strait. Geological Survey of Canada, Open File 500.
- Shaw, R.R.K., Ford, K.L., and Charbonneau, B.W. 1990. Geology of the Fundy region. Geological Survey of Canada, Open File 500.
- Shaw, R.R.K., Charbonneau, B.W., and Ford, K.L. 1997. The geology of the Fundy region. Geological Survey of Canada, Open File 500.
- Thorne, M.D., Walker, J.A., Keating, P., Shaw, R., Kim, P., and Goodfellow, W.D. 2000. Geology of the Fundy region. Geological Survey of Canada, Open File 500.

Geographic compilation by J.M. Carson, P.B. Holden, K.L. Ford, J.A. Grant, and R.R.K. Shaw.  
 Digital cartography by J.A.Y. Pratt, Earth Sciences Sector Information Division (ESS-IMS).  
 This map was produced from processes in conformance with the Cartographic Services Sector Quality Management System, Ottawa, registered to the Quality System ISO 9001:2000 standard.  
 Any reference herein to the user should be welcomed by the Geological Survey of Canada.  
 Digital base map from data compiled by Geomatics Canada, modified by ESS-IMS.

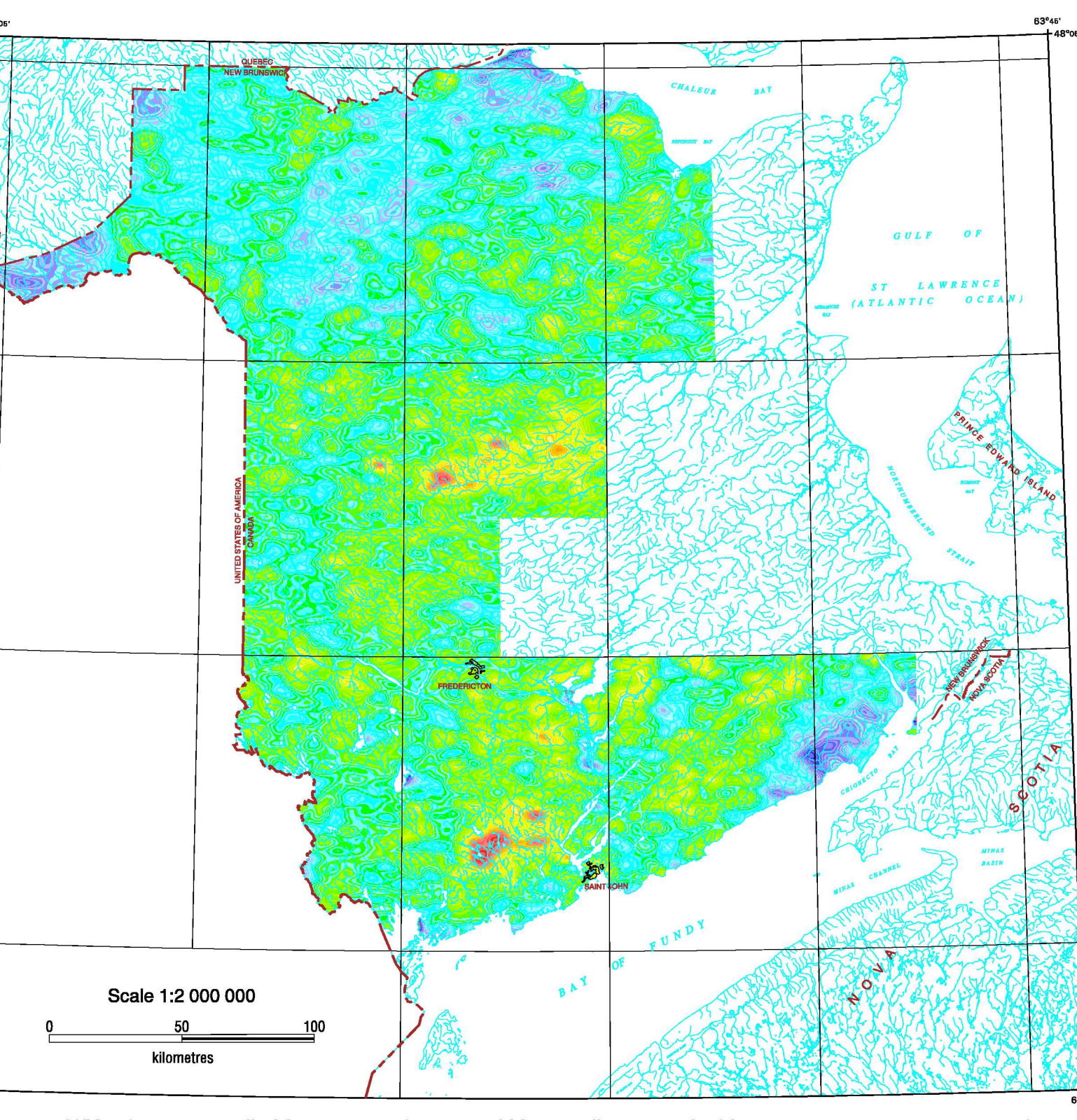


Figure 1. eU/K ratio map compiled from reconnaissance, 5000 metre line spaced, airborne gamma ray spectrometry data.

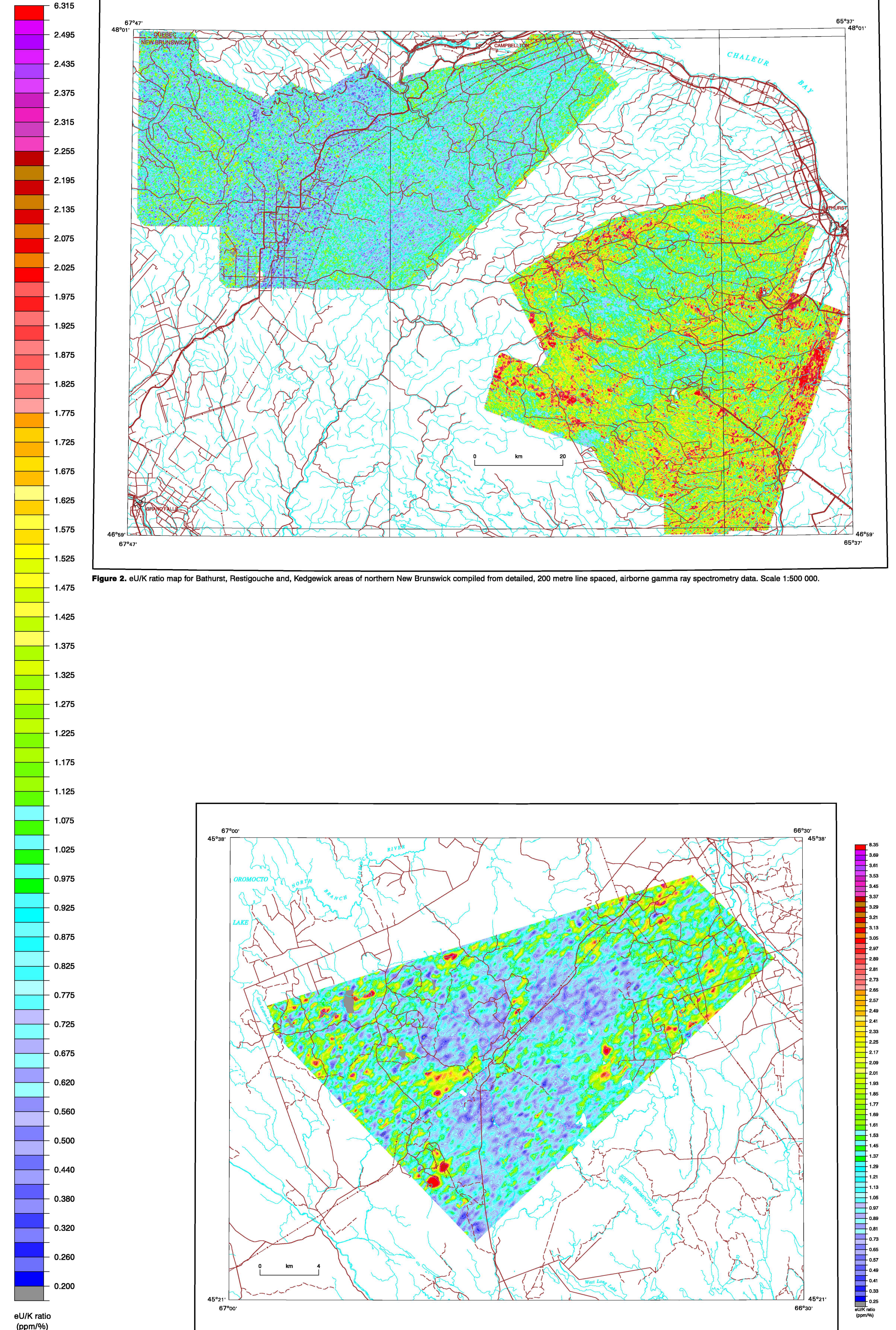


Figure 2. eU/K ratio map for Bathurst, Ffestouche and Kedgwick areas of northern New Brunswick compiled from detailed, 200 metre line spaced, airborne gamma ray spectrometry data. Scale 1:500 000.

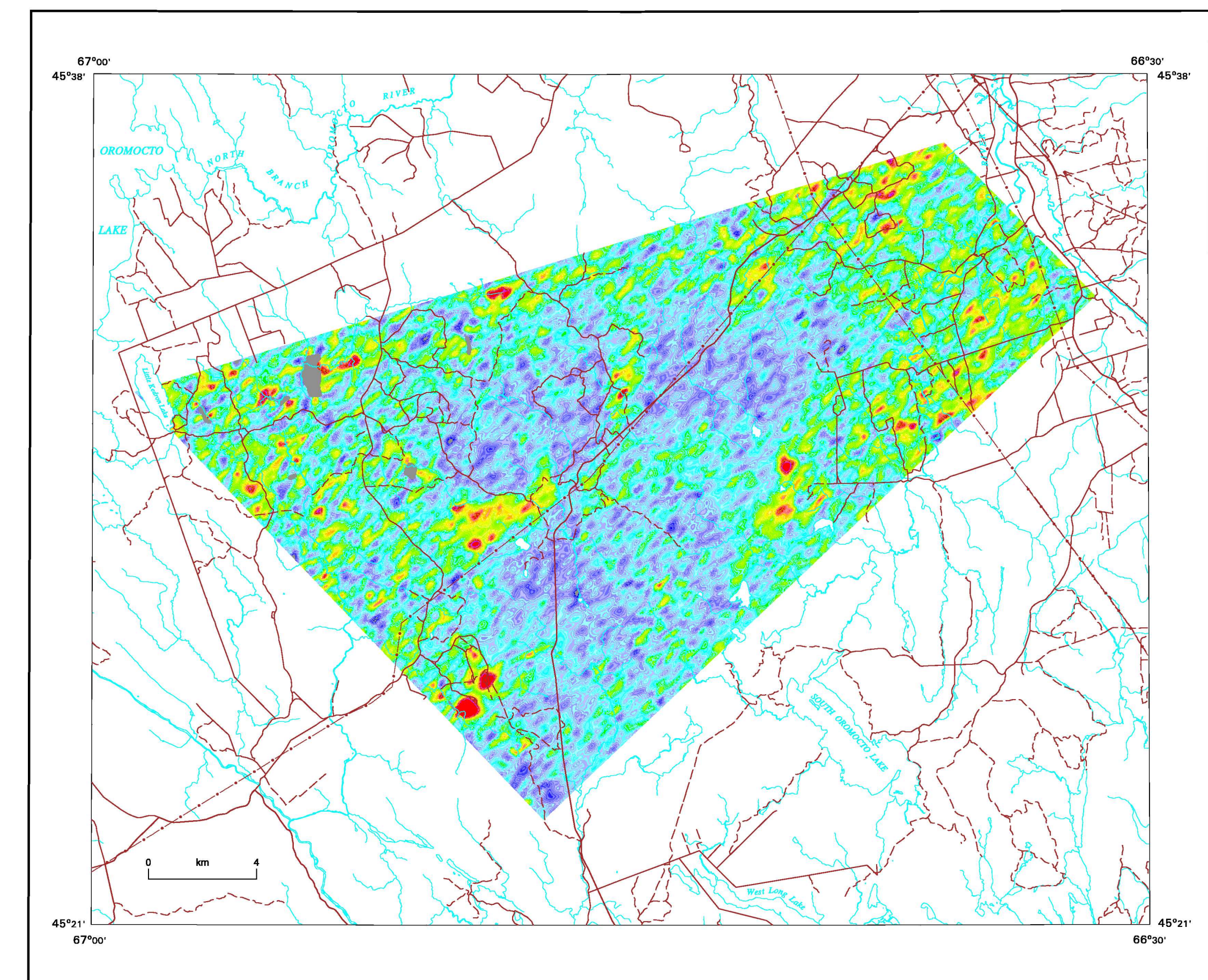
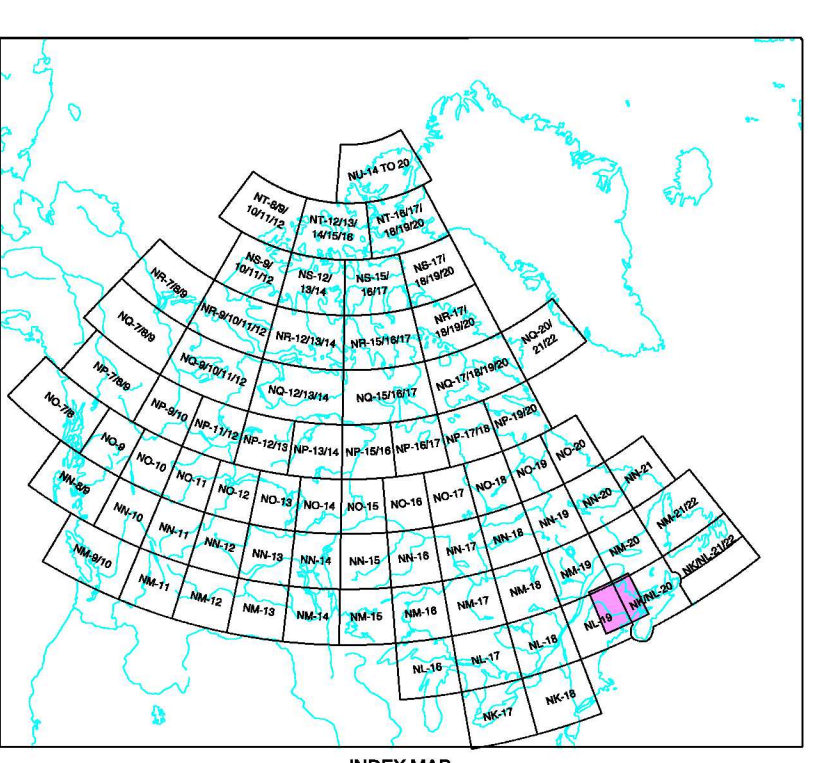


Figure 3. eU/K ratio map for the Mount Pleasant area compiled from detailed, 250 metre line spaced, airborne gamma ray spectrometry data. Scale 1:150 000.



INDEX MAP

eU/K ratio  
 OPEN FILE 4499  
**AIRBORNE GAMMA RAY SPECTROMETRY COMPILATION**  
**NEW BRUNSWICK**  
 NEW BRUNSWICK  
 Scale 1:500 000 / Échelle 1:500 000  
 Kilometres 0 10 20 30 40 Miles  
 Universal Transverse Mercator Projection  
 North American Datum 1983  
 © Her Majesty the Queen in Right of Canada 2004

**OPEN FILE**  
**DOSSIER PUBLIC**  
**4499**  
 Les données publiées sont  
 des données de l'État  
 Open File 4499 / Dossier Public 4499  
 2004