

Figure 1. eU/eTh ratio map compiled from reconnaissance, 5000 metre line spaced, airborne gamma ray spectrometry data.

Figure 1. eU/eTh ratio map compiled from reconnaissance, 5000 metre line spaced, airborne gamma ray spectrometry data.

DESCRIPTIVE NOTES

This feasibility map of New Brunswick is one of a set of 1:500 000 regional maps that include three regional maps (Atlantic, Quebec and Ontario) and the other three (Alberta, Saskatchewan and Yukon/NT) are currently in progress. The map was compiled from data collected during flight three of the 2000 aerial survey. The map shows the distribution of uranium and thorium concentrations in the crust. The map is based on data collected during flight three of the 2000 aerial survey. The map shows the distribution of uranium and thorium concentrations in the crust. The map is based on data collected during flight three of the 2000 aerial survey.

REFERENCES

Brown, J., Carson, J.M., Grant, J.A., and Ford, K.L. 1987. A regional survey of the eastern seaboard of New Brunswick and its application to the Basin Coalfield. Geological Survey of Canada Paper 87-1.

McClintock, B.R. 1980. The Late Devonian Mount Pleasant tectonic province, tectonics, magmatism, and metamorphism of the eastern seaboard of New Brunswick. Unpublished Ph.D. thesis, McGill University, Montreal, New Brunswick.

McLennan, S.M. 1989. Geochemistry and tectonic evolution of the Basin Coalfield, Chaleur Bay, and the Gulf of St. Lawrence, New Brunswick. Ph.D. thesis, Department of Earth Sciences, McGill University, Montreal, New Brunswick.

Pink, A.G., and Seaman, A.A. 2000. Geology of the Basin Coalfield, Chaleur Bay, and the Gulf of St. Lawrence, New Brunswick. Geological Survey of Canada Open File 2000-2.

Shaw, R.B.K., Ford, K.L., and Charbonneau, B.W. 1997. Geology of the Basin Coalfield, Chaleur Bay, and the Gulf of St. Lawrence, New Brunswick. Geological Survey of Canada Open File 97-2.

Shaw, R.B.K., Charbonneau, B.W., and Ford, K.L. 1997. Geology of the Basin Coalfield, Chaleur Bay, and the Gulf of St. Lawrence, New Brunswick. Geological Survey of Canada Open File 97-2.

Thomas, W.D., Walker, J.A., Kesteven, P., Shaw, R., Kline, F., and Goodfellow, W.D. 2000. Regional geology of the Basin Coalfield, Chaleur Bay, and the Gulf of St. Lawrence, New Brunswick. Geological Survey of Canada Open File 2000-2.

Geographic compilation by J.M. Carson, J.B. Rodman, K.L. Ford, and J.A. Grant.

Digital cartography by J.A.Y. Pratt, Earth Sciences Sector Information Division (ESS) of the Geological Survey of Canada.

This map was produced from processes in conformance with the Cartographic Services Section Quality Management System, Canada, registered to the Quality System ISO 9001:2000 standard.

Any revisions known to the user should be welcomed by the Geological Survey of Canada.

Digital base map from data compiled by Geomatics Canada, modified by ESS staff.

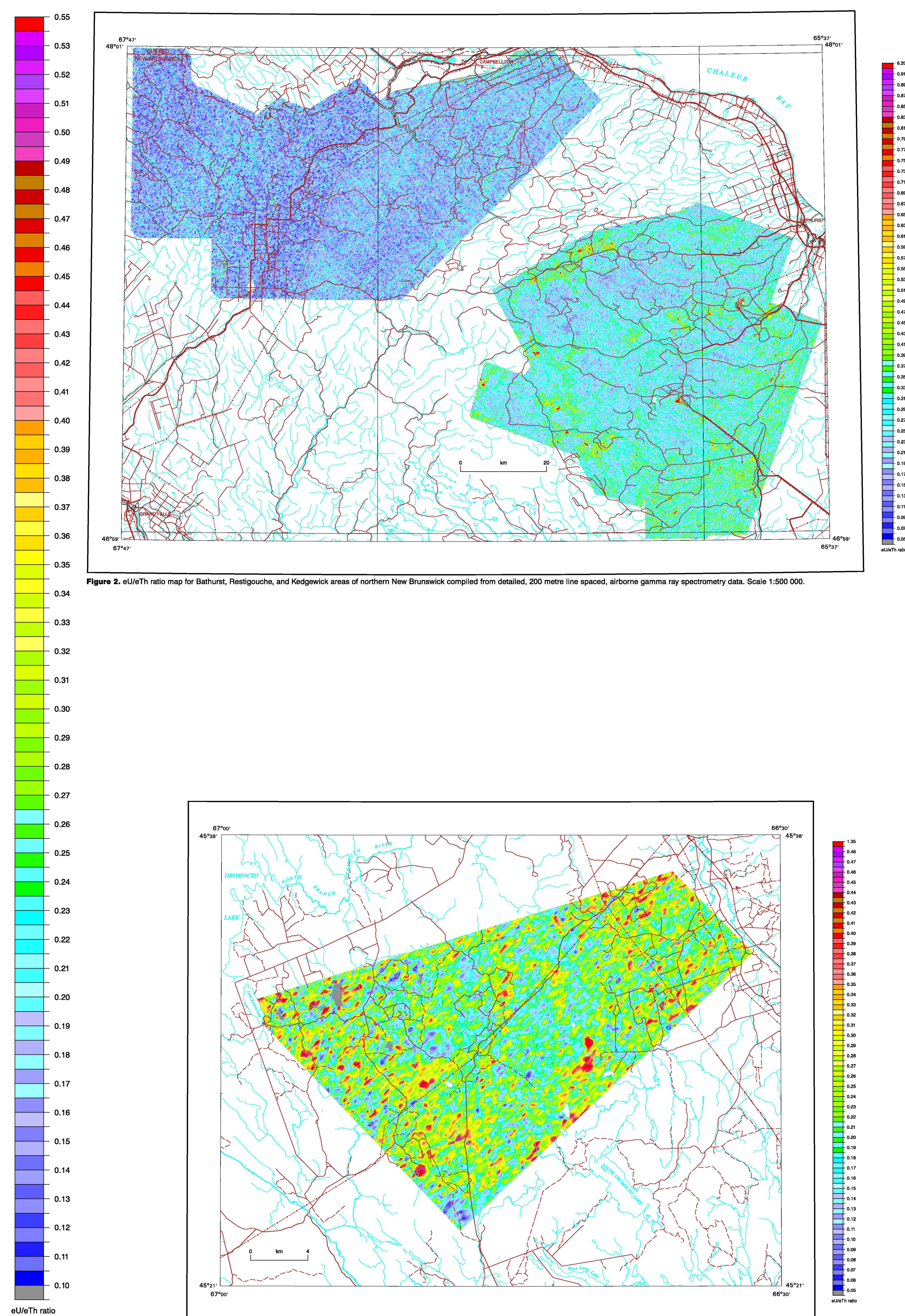


Figure 2. eU/eTh ratio map for Bathurst, Restigouche, and Kodjok areas of northern New Brunswick compiled from detailed, 200 metre line spaced, airborne gamma ray spectrometry data. Scale 1:500 000.

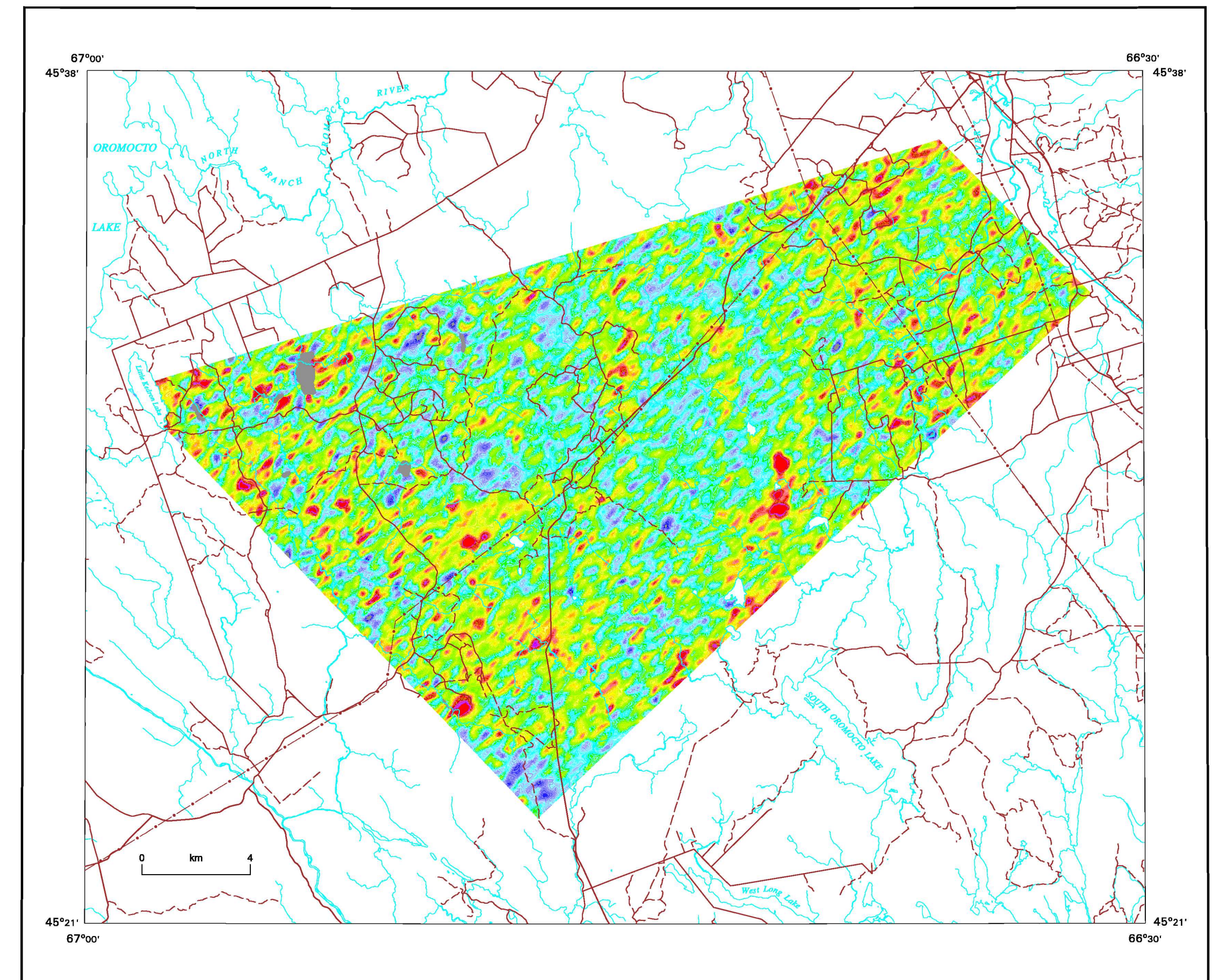
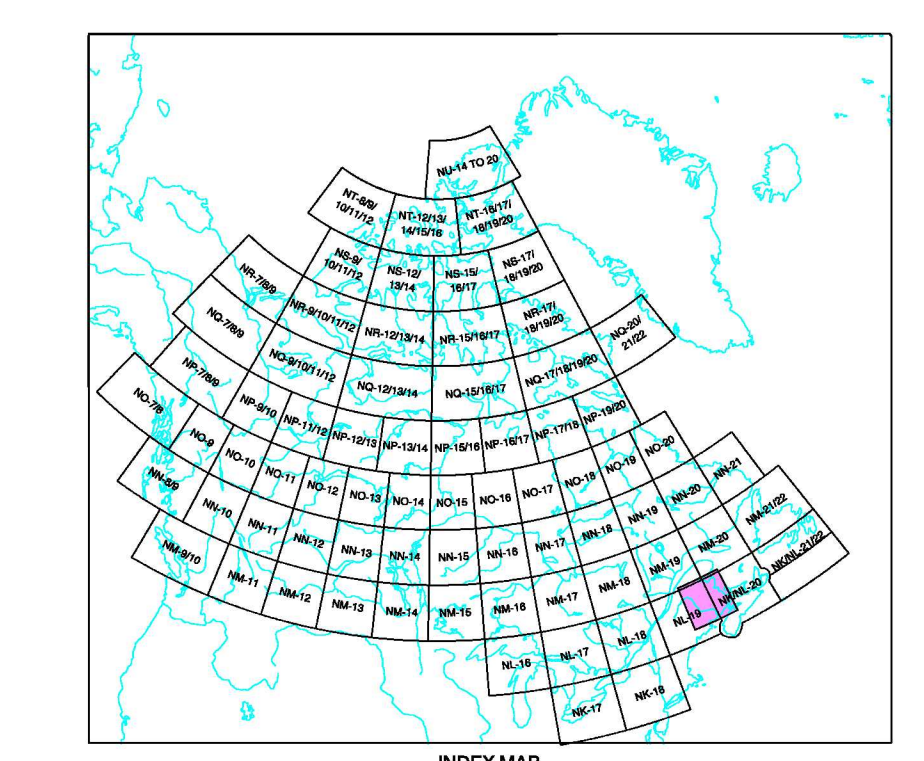


Figure 3. eU/eTh ratio map for the Mount Pleasant area compiled from detailed, 250 metre line spaced, airborne gamma ray spectrometry data. Scale 1:150 000.



eU/eTh ratio
OPEN FILE 4498
AIRBORNE GAMMA RAY SPECTROMETRY COMPILED
NEW BRUNSWICK
NEW BRUNSWICK
Scale 1:500 000 / Échelle 1:500 000

**OPEN FILE
DOSSIER PUBLIC
4498**

Consultez les données
publiques en français
à l'adresse: www.nrc.gc.ca
ou en anglais à l'adresse:
www.nrc.ca

2004