

DESCRIPTIVE NOTES

This feasibility map of New Brunswick is one of eight 1:500 000 regional compilation maps that include three reconnaissance (1:500 000), detailed (1:250 000) and equivalent thorium (1:500 000) maps. The reconnaissance map is derived from a broad coverage of 1:500 000 scale reconnaissance maps. The detailed map is derived from the Geological Survey of Canada (GSC) and provincial maps, using historic and present-day topographic information. The equivalent thorium map is derived from airborne gamma ray spectrometry data. The reconnaissance map is derived from 1:500 000 scale reconnaissance maps. The detailed map is derived from 1:250 000 scale detailed maps. The equivalent thorium map is derived from airborne gamma ray spectrometry data. The reconnaissance map is derived from 1:500 000 scale reconnaissance maps. The detailed map is derived from 1:250 000 scale detailed maps. The equivalent thorium map is derived from airborne gamma ray spectrometry data.

- REFERENCES**
- Brown, J., Carson, J.M., Grant, J.A., and Ford, K.L. 1987. A regional survey of thorium in New Brunswick and its application to the South Coast of Newfoundland. Geological Survey of Canada, Paper 87-1.
 - McClintock, R.H. 1980. The late Devonian Mount Pleasant carboniferous, stratigraphic, mineralogical, geochemistry and petrology of the southern New Brunswick. Unpublished Ph.D. thesis, McGill University, Montreal, New Brunswick.
 - McLennan, M.J. 1989. Geology, geochemistry and related mineral deposits of the Saint George Basin, Chatham, Chatham and Kent Counties, New Brunswick. Report to the Geological Survey of Canada, Contract 89-01-01.
 - Prosser, A.G. and Seaman, A.A. 2000. Geology, geochemistry and related mineral deposits of the Saint George Basin, Chatham, Chatham and Kent Counties, New Brunswick. Report to the Geological Survey of Canada, Contract 00-01-01.
 - Shaw, R.H.K., Ford, K.L., and Charbonneau, B.W. 1986. Geology, geochemistry and related mineral deposits of the Saint George Basin, Chatham, Chatham and Kent Counties, New Brunswick. Report to the Geological Survey of Canada, Contract 86-01-01.
 - Shaw, R.H.K., Charbonneau, B.W., and Ford, K.L. 1987. The geology, geochemistry and related mineral deposits of the Saint George Basin, Chatham, Chatham and Kent Counties, New Brunswick. Report to the Geological Survey of Canada, Contract 87-01-01.
 - Thomas, W.D., Walker, J.A., Keating, P., Shaw, R.H., Kline, F., and Goodfellow, W.D. 2000. Geology, geochemistry and related mineral deposits of the Saint George Basin, Chatham, Chatham and Kent Counties, New Brunswick. Report to the Geological Survey of Canada, Contract 00-01-01.

Geographic compilation by J.M. Carson, J.B. Harkin, K.L. Ford, J.A. Grant, and R.H. Shaw

Digital cartography by J.A.Y. Pratt, Earth Science Sector Information Division (ESS) only

This map was produced from processes in conformance with the Cartographic Services Section Quality Management System, which is registered to the Quality System ISO 9001:2000 standard.

Any revisions shown to the user should be welcomed by the Geological Survey of Canada.

Digital base map from data compiled by Geomatics Canada, modified by ESS staff.

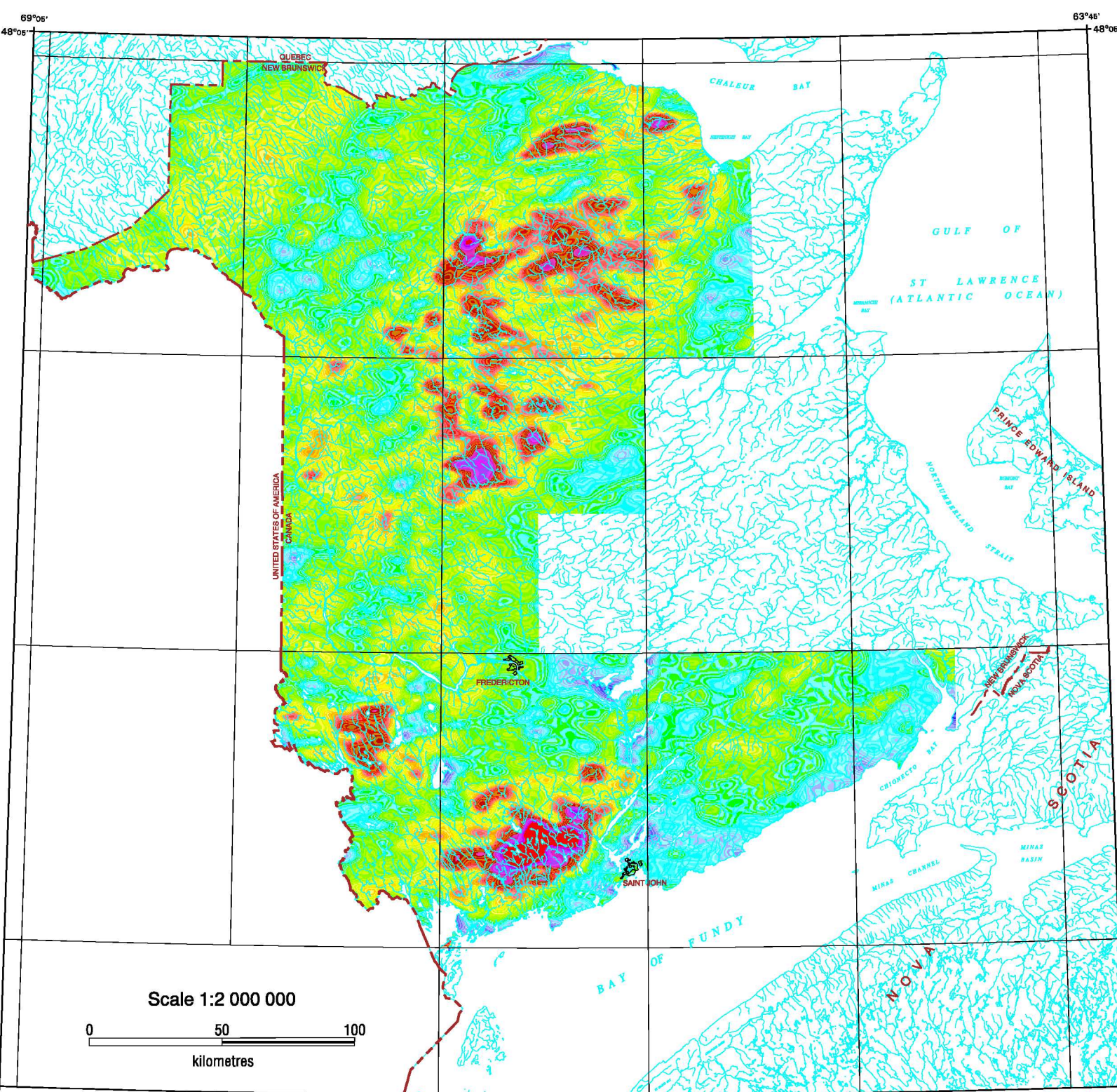


Figure 1. Equivalent thorium map compiled from reconnaissance, 5000 metre line spaced, airborne gamma ray spectrometry data.

equivalent Thorium
OPEN FILE 4497
AIRBORNE GAMMA RAY SPECTROMETRY COMPILATION
NEW BRUNSWICK
NEW BRUNSWICK
Scale 1:500 000 / Échelle 1:500 000

Universal Transverse Mercator Projection
North American Datum 1983
© Her Majesty the Queen in Right of Canada 2004

OPEN FILE
DOSSIER PUBLIC
4497
2004

Recommended citation:
Carson, J.M., Harkin, J.B., Ford, K.L., Grant, J.A., and Shaw, R.H.K. 2004. Airborne Gamma Ray Spectrometry Compilation, equivalent Thorium, New Brunswick, New Brunswick. Geological Survey of Canada, Open File 4497, scale 1:500 000.