

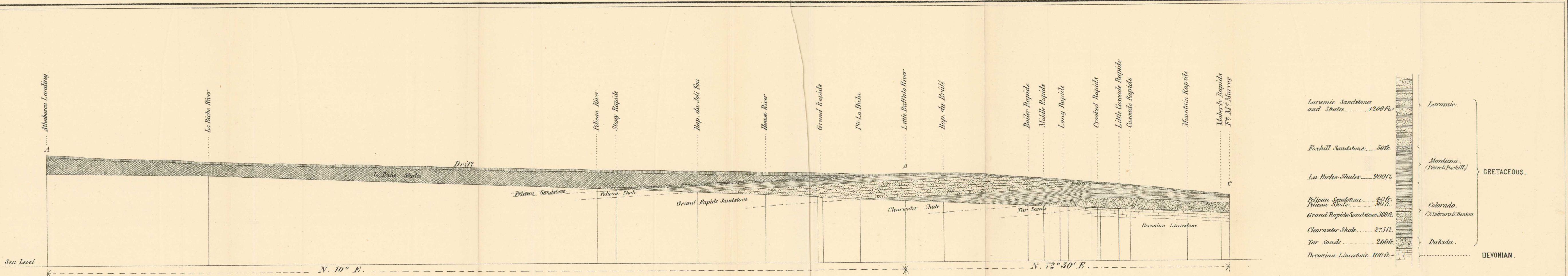
This map has been reprinted from a scanned version of the original map
 Reproduction par numérisation d'une carte sur papier

Geological Survey Department,
 Canada

HONOURABLE EDGAR D'ARNEY, MINISTER.

ALFRED R. C. SELWYN, C.M.G., LL.D., F.S., &c., DIRECTOR.

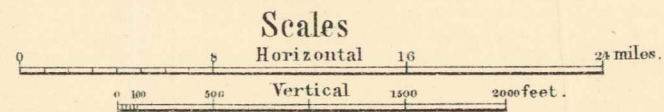
1892.



Laramie Sandstones and Shales.....	1200 ft.	Laramie.	} CRETACEOUS.
Foxhill Sandstone.....	50 ft.		
La Biche Shales.....	900 ft.	} Colorado (Moberly & Benton)	
Pelican Sandstone.....	40 ft.		
Pelican Shale.....	90 ft.		
Grand Rapids Sandstone.....	300 ft.		
Clearwater Shale.....	275 ft.	} Dakota.	
Tar Sands.....	200 ft.		
Devonian Limestone.....	100 ft.		

SECTION ALONG THE ATHABASCA VALLEY FROM ATHABASCA LANDING TO FORT MCMURRAY.

Projected on lines AB, BC, as shown on sheet 2 of map.



Athabasca River and Lesser Slave River & Lake Section.