

These new radiometric maps were produced using the digital archives of the National Gamma Ray Spectrometry Program (NAGSAP)...

The new maps cover only 20 km of the coastline of the island, as a result of the availability of data. For most of the island, the 1997 data were used at 500 m intervals...

These maps were compiled using 20 km of the coastline of the island, as a result of the availability of data. For most of the island, the 1997 data were used at 500 m intervals...

These maps were compiled using 20 km of the coastline of the island, as a result of the availability of data. For most of the island, the 1997 data were used at 500 m intervals...

These maps were compiled using 20 km of the coastline of the island, as a result of the availability of data. For most of the island, the 1997 data were used at 500 m intervals...

These maps were compiled using 20 km of the coastline of the island, as a result of the availability of data. For most of the island, the 1997 data were used at 500 m intervals...

These maps were compiled using 20 km of the coastline of the island, as a result of the availability of data. For most of the island, the 1997 data were used at 500 m intervals...

These maps were compiled using 20 km of the coastline of the island, as a result of the availability of data. For most of the island, the 1997 data were used at 500 m intervals...

These maps were compiled using 20 km of the coastline of the island, as a result of the availability of data. For most of the island, the 1997 data were used at 500 m intervals...

These maps were compiled using 20 km of the coastline of the island, as a result of the availability of data. For most of the island, the 1997 data were used at 500 m intervals...

These maps were compiled using 20 km of the coastline of the island, as a result of the availability of data. For most of the island, the 1997 data were used at 500 m intervals...

These maps were compiled using 20 km of the coastline of the island, as a result of the availability of data. For most of the island, the 1997 data were used at 500 m intervals...

These maps were compiled using 20 km of the coastline of the island, as a result of the availability of data. For most of the island, the 1997 data were used at 500 m intervals...

These maps were compiled using 20 km of the coastline of the island, as a result of the availability of data. For most of the island, the 1997 data were used at 500 m intervals...

These maps were compiled using 20 km of the coastline of the island, as a result of the availability of data. For most of the island, the 1997 data were used at 500 m intervals...

These maps were compiled using 20 km of the coastline of the island, as a result of the availability of data. For most of the island, the 1997 data were used at 500 m intervals...

These maps were compiled using 20 km of the coastline of the island, as a result of the availability of data. For most of the island, the 1997 data were used at 500 m intervals...

These maps were compiled using 20 km of the coastline of the island, as a result of the availability of data. For most of the island, the 1997 data were used at 500 m intervals...

These maps were compiled using 20 km of the coastline of the island, as a result of the availability of data. For most of the island, the 1997 data were used at 500 m intervals...

These maps were compiled using 20 km of the coastline of the island, as a result of the availability of data. For most of the island, the 1997 data were used at 500 m intervals...

These maps were compiled using 20 km of the coastline of the island, as a result of the availability of data. For most of the island, the 1997 data were used at 500 m intervals...

These maps were compiled using 20 km of the coastline of the island, as a result of the availability of data. For most of the island, the 1997 data were used at 500 m intervals...

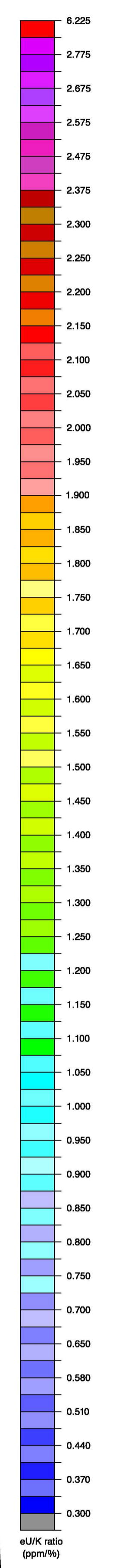
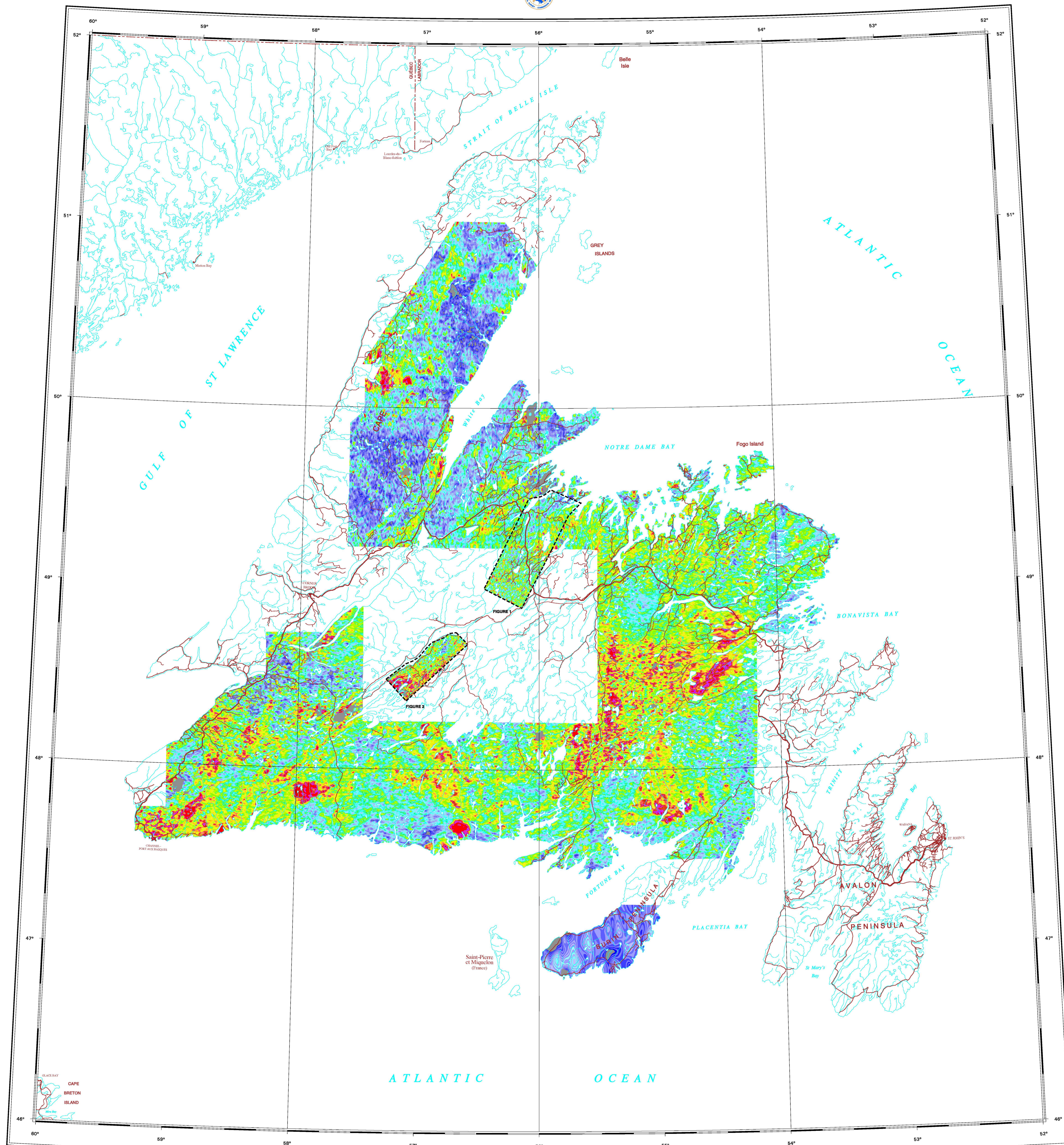
These maps were compiled using 20 km of the coastline of the island, as a result of the availability of data. For most of the island, the 1997 data were used at 500 m intervals...

These maps were compiled using 20 km of the coastline of the island, as a result of the availability of data. For most of the island, the 1997 data were used at 500 m intervals...

These maps were compiled using 20 km of the coastline of the island, as a result of the availability of data. For most of the island, the 1997 data were used at 500 m intervals...

These maps were compiled using 20 km of the coastline of the island, as a result of the availability of data. For most of the island, the 1997 data were used at 500 m intervals...

These maps were compiled using 20 km of the coastline of the island, as a result of the availability of data. For most of the island, the 1997 data were used at 500 m intervals...



eU/K ratio
OPEN FILE 4463
AIRBORNE GAMMA RAY SPECTROMETRY COMPILATION
ISLAND OF NEWFOUNDLAND
NEWFOUNDLAND AND LABRADOR
Scale 1:1 000 000 / Échelle 1:1 000 000

Unscaled Transverse Mercator Projection
North American Datum 1927
© Her Majesty the Queen in Right of Canada 2003

Projection transversale méridienne de Mercator
Système de référence géodésique nord-américain, 1927
© Sa Majesté la Reine en chef du Canada 2003

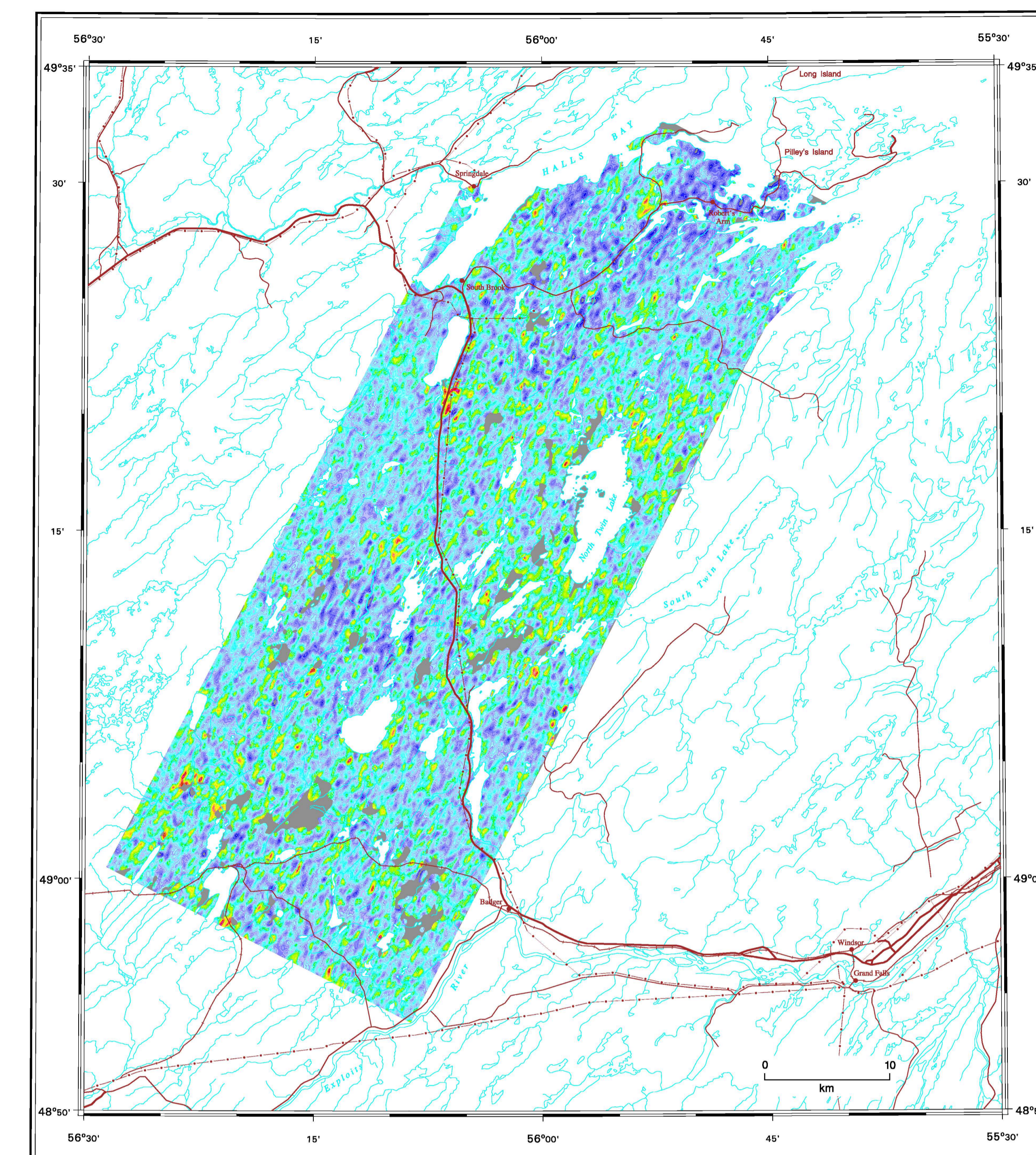


Figure 1
eU/K ratio
GREAT GULL LAKE

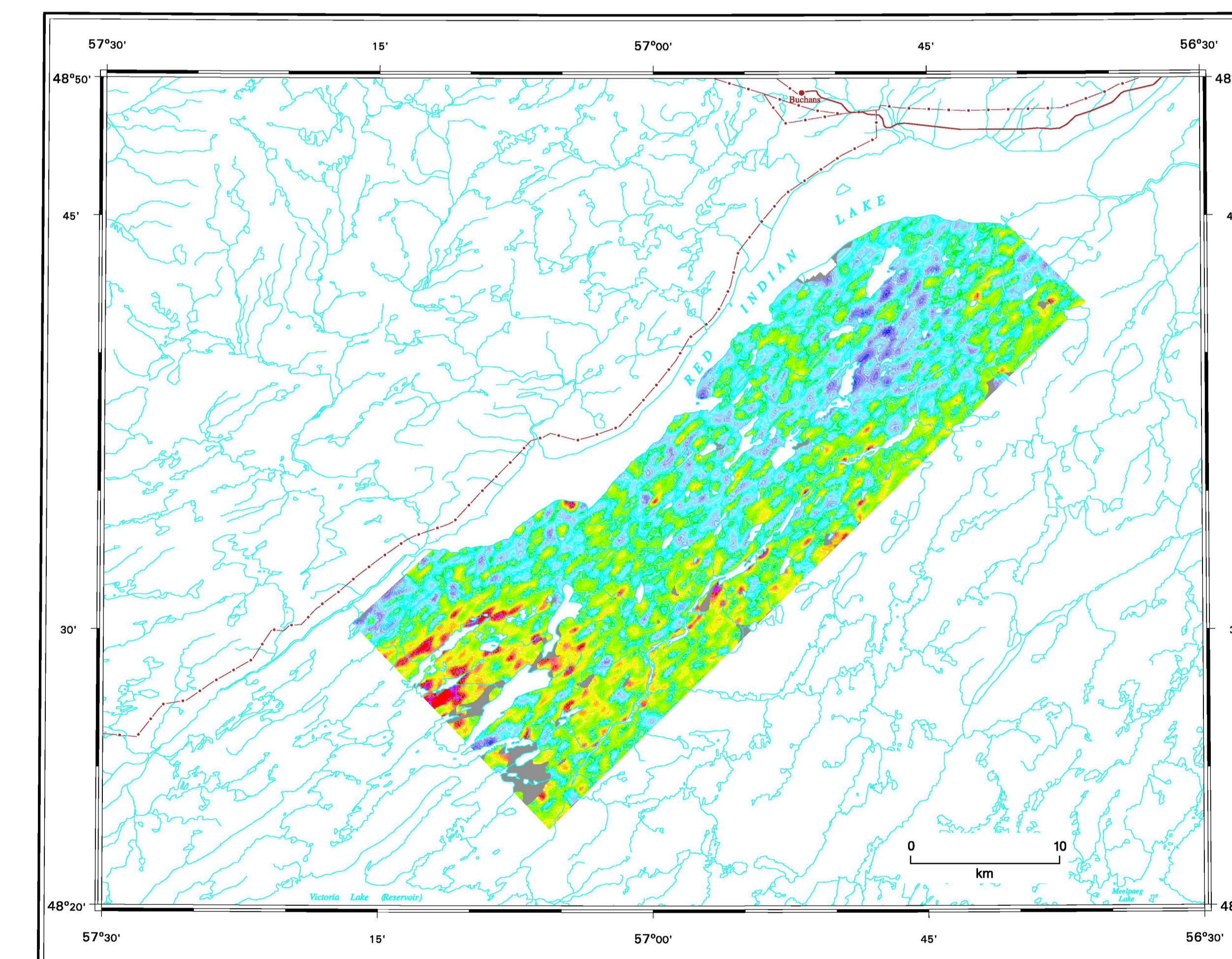


Figure 2
eU/K ratio
TULKS VOLCANIC BELT

OPEN FILE
DOSSIER PUBLIC
4463
2003
SHEET 6 OF 8
FEUILLE 6 DE 8

Sheet 6 of 8, Airborne Gamma Ray Spectrometry Compilation
Recommended citation:
Carson, J.M., Holman, P.B., Ford, K.L., Grant, J.A., and
Shaw, R.B.K. 2003. Airborne Gamma Ray Spectrometry Compilation, Island of
Newfoundland, Newfoundland and Labrador, Geological Survey
of Canada, Open File 4463, scale 1:1 000 000.