

These new radiometric maps were produced using the digital archives of the National Gamma Ray Spectrometry Program (NGRS)...

The data were collected using 23 lines of sodium iodide detectors, at a nominal altitude (vertical) of 120 m...

For most of the surveyed area, flight lines were spaced at 300 m intervals. In the southern part of the Island, the spacing was increased to 600 m...

These maps depict radiometric data collected from the upper 30 cm of the earth's surface. The data represent average surface concentrations...

Throughout the diverse tectonic terrain surveyed, the geochemical information provided by variations in potassium, uranium and thorium concentrations suggests mapping of tectonic and tectono-stratigraphic units...

The 1:500 000 compilation map includes a variety of geotectonic units including the Avalon Zone, the St. Lawrence Group, and the Avalon Complex...

Further gamma ray spectrometry surveys have been conducted in several areas of potential interest. For example, the area along the south coast of the Avalon Zone...

Information regarding radiometric data has been disseminated to various interested parties through the publication of this report...

These maps depict radiometric data collected from the upper 30 cm of the earth's surface. The data represent average surface concentrations...

Throughout the diverse tectonic terrain surveyed, the geochemical information provided by variations in potassium, uranium and thorium concentrations suggests mapping of tectonic and tectono-stratigraphic units...

The 1:500 000 compilation map includes a variety of geotectonic units including the Avalon Zone, the St. Lawrence Group, and the Avalon Complex...

Further gamma ray spectrometry surveys have been conducted in several areas of potential interest. For example, the area along the south coast of the Avalon Zone...

Information regarding radiometric data has been disseminated to various interested parties through the publication of this report...

REFERENCES

- Brown, J., Cannon, J.M., Grant, J.A., and Ford, K.L. 1987. A modified ternary radiometric mapping technique and its application to the South Coast of Newfoundland. Geological Survey of Canada, Paper 87-1.

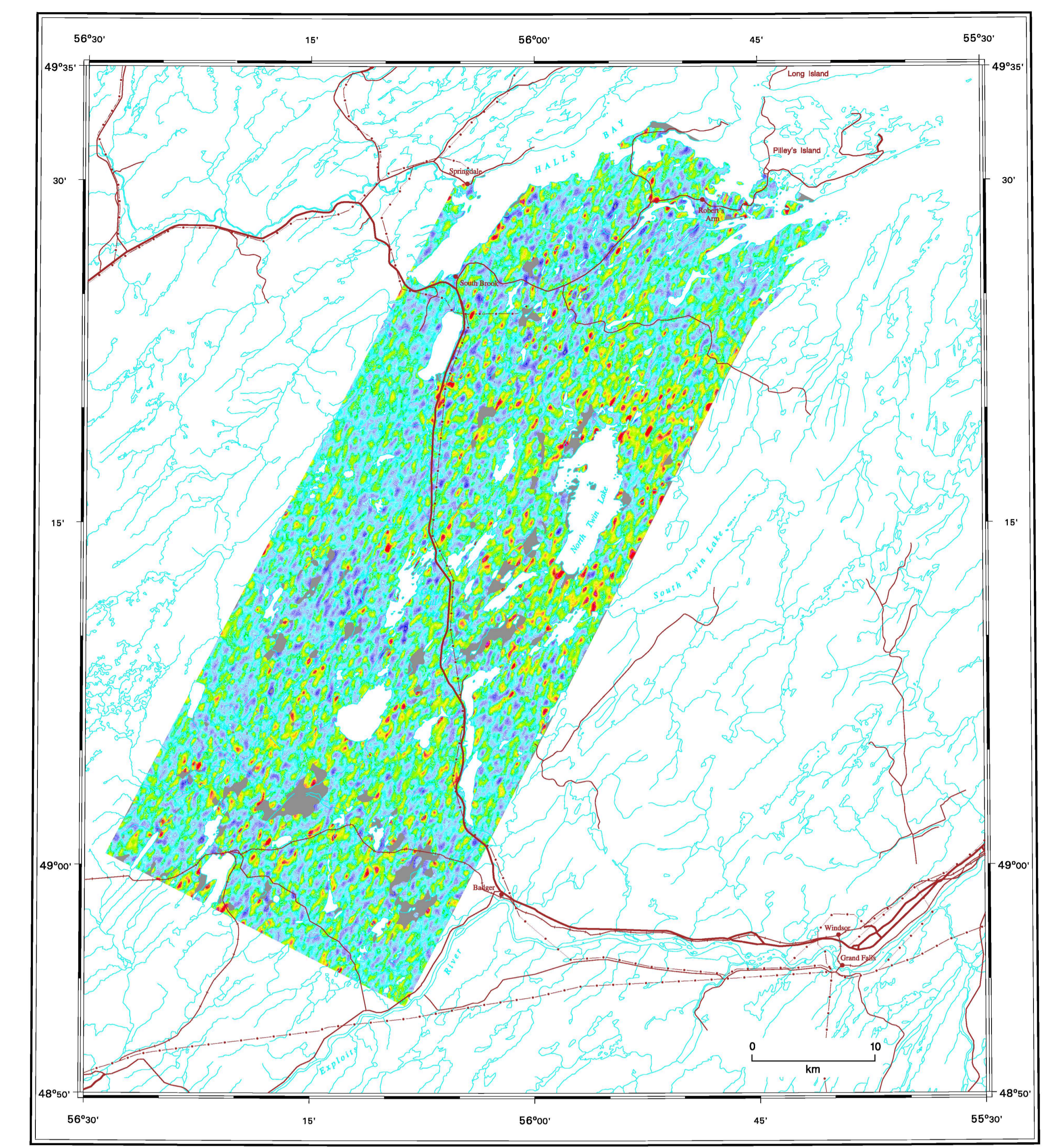
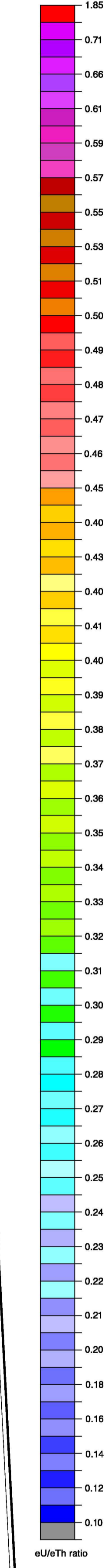
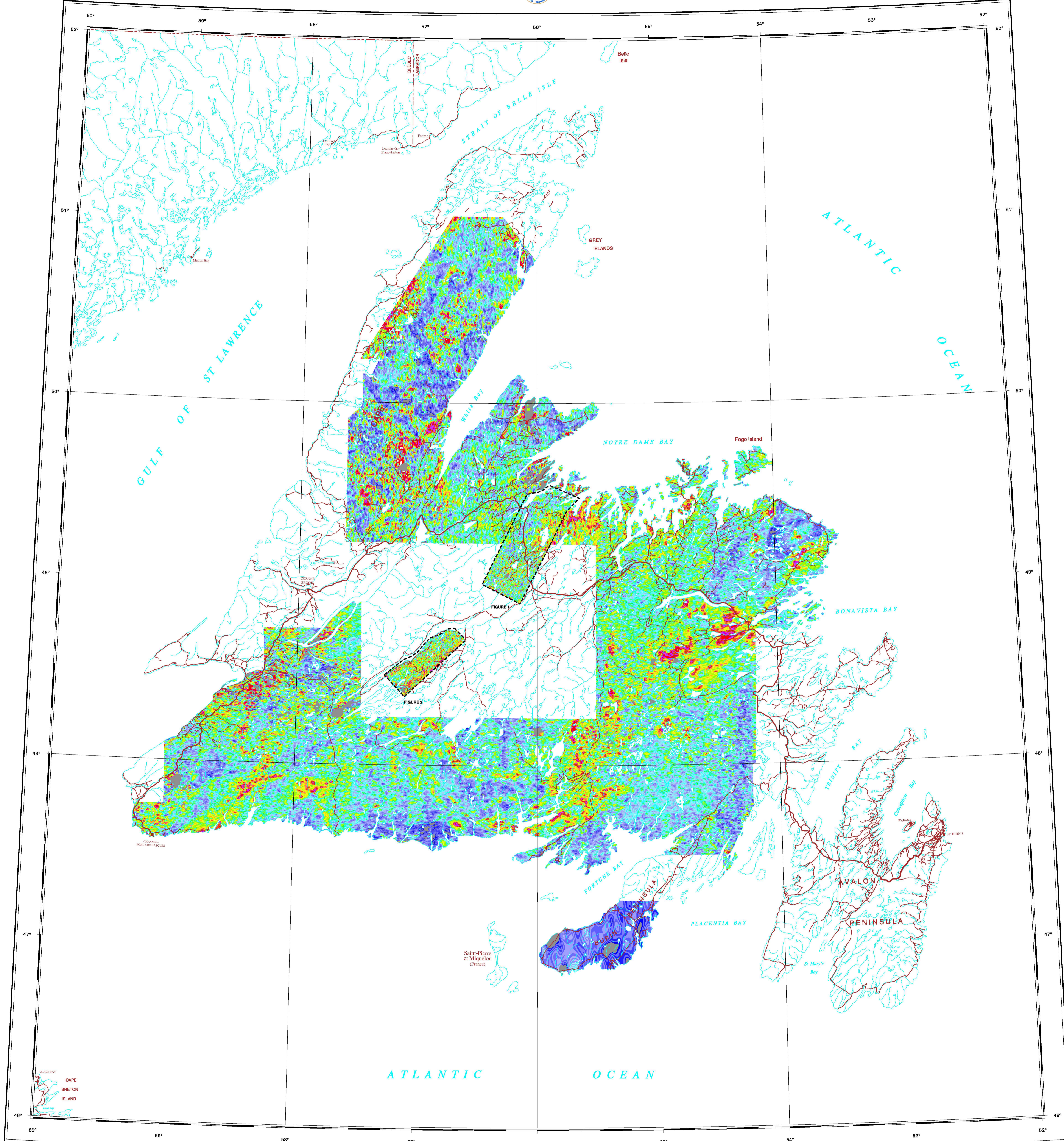
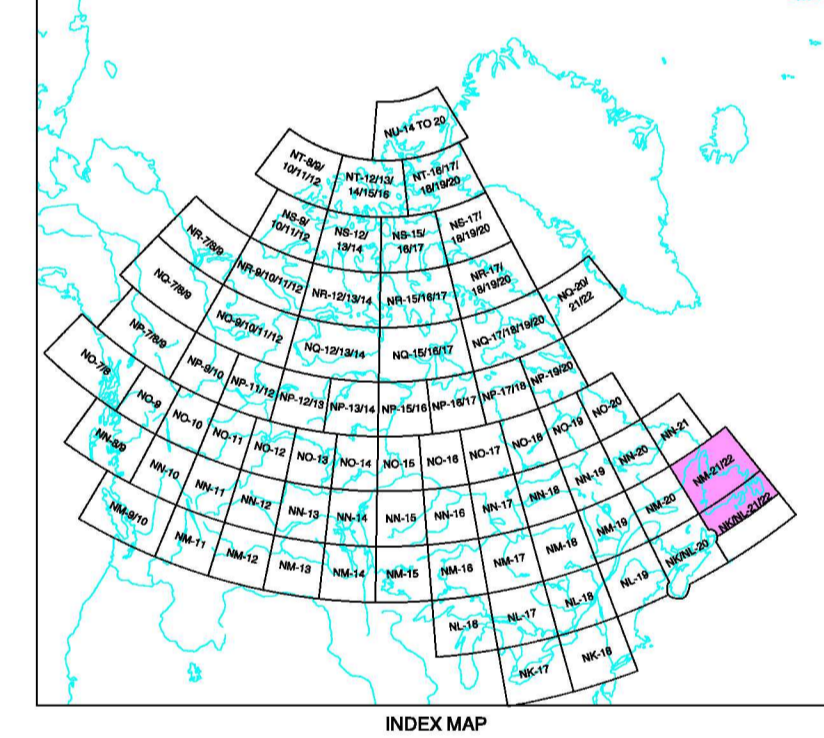


Figure 1 eU/eTh ratio GREAT GULL LAKE

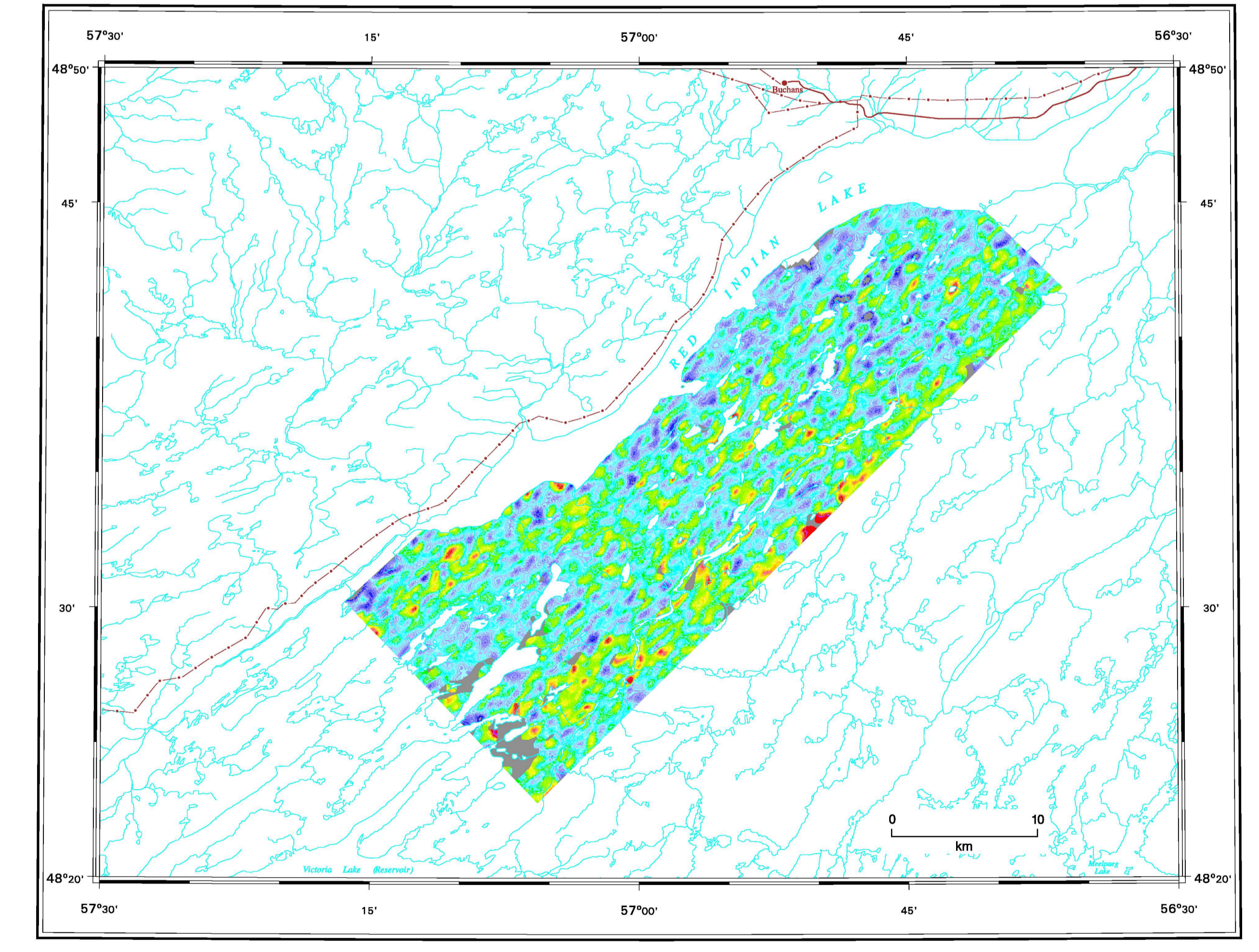
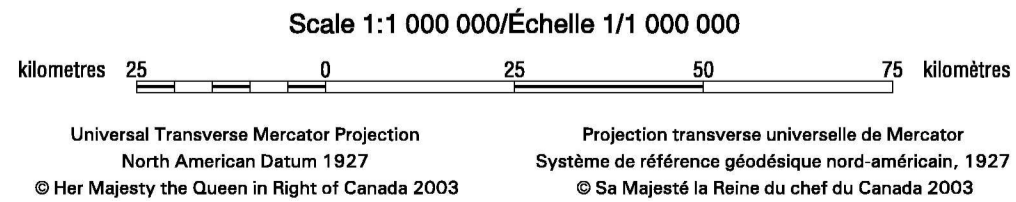


Figure 2 eU/eTh ratio TULKUS VOLCANIC BELT

eU/eTh ratio OPEN FILE 4463 AIRBORNE GAMMA RAY SPECTROMETRY COMPILATION ISLAND OF NEWFOUNDLAND AND LABRADOR



Universal Transverse Mercator Projection North American Datum 1927

OPEN FILE DOSSIER PUBLIC 4463. Includes information about the file's status and date.