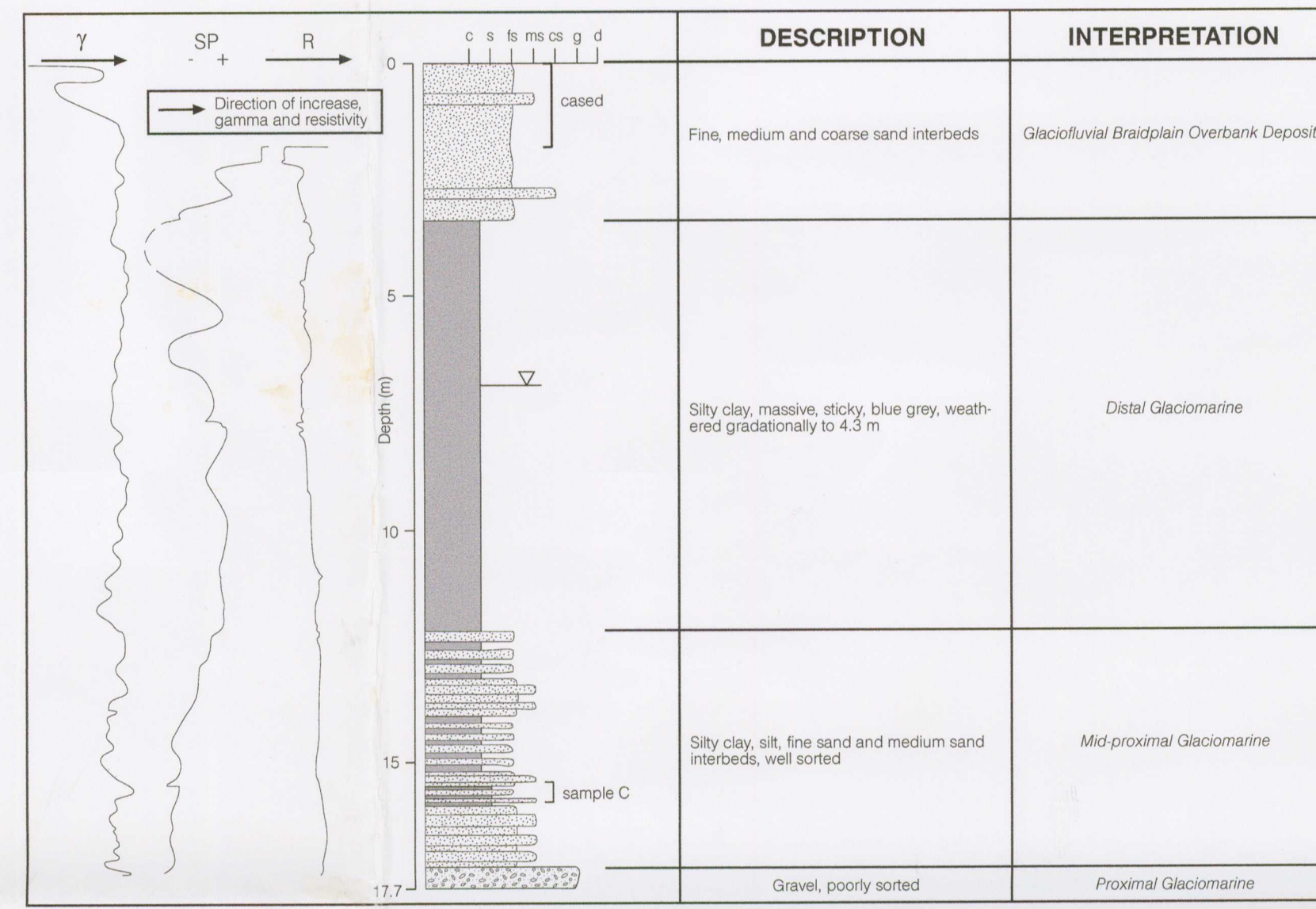
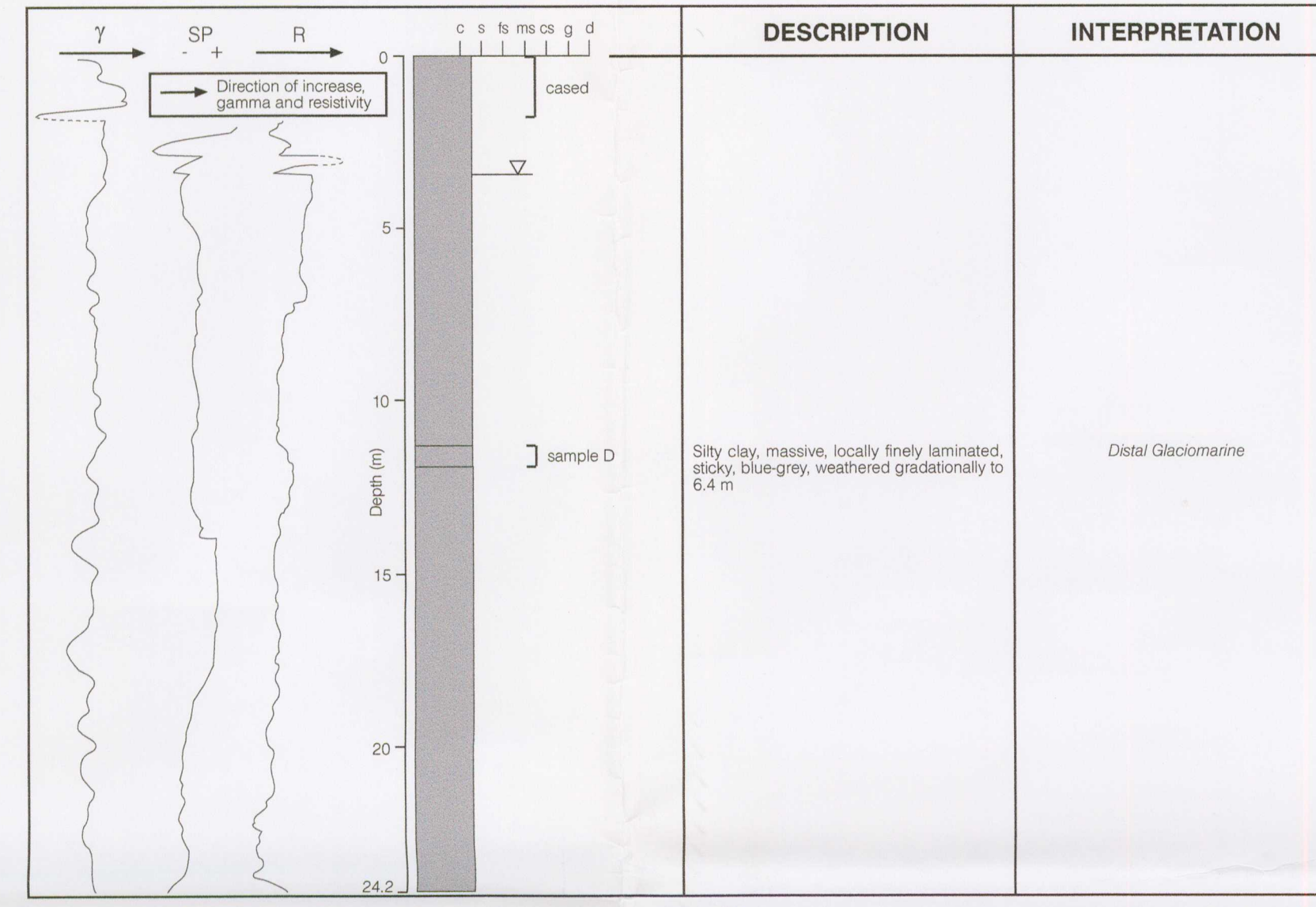


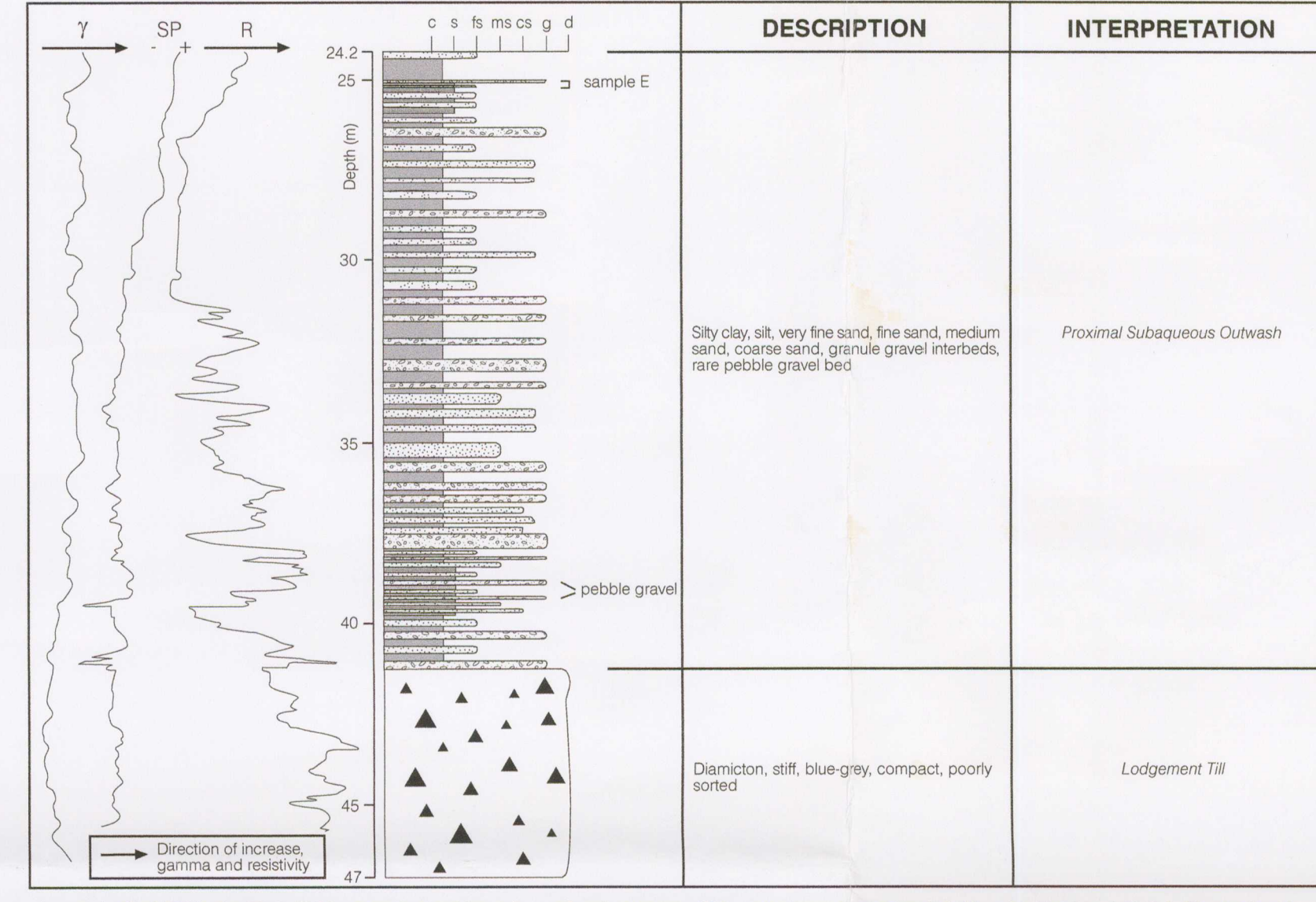
Drill hole 98-2-1005, geophysical logs (γ - natural gamma, SP - spontaneous potential, R - electrical resistivity), lithological log and interpretation. Note the marked deviation in the logs at the diamicton bed. Split spoon sample intervals are shown with brackets. Located on Open File 3901 map sheet 2 of 3



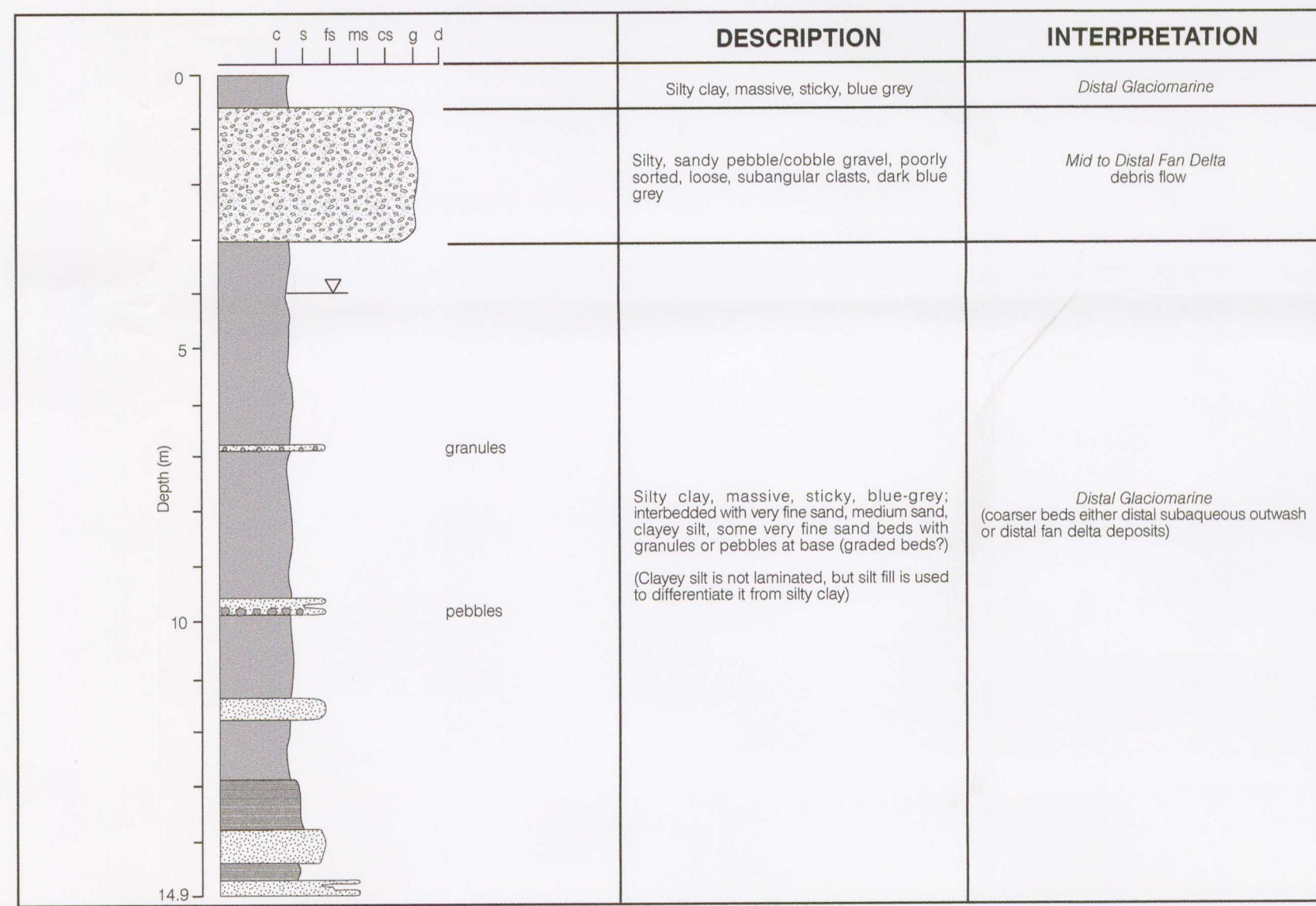
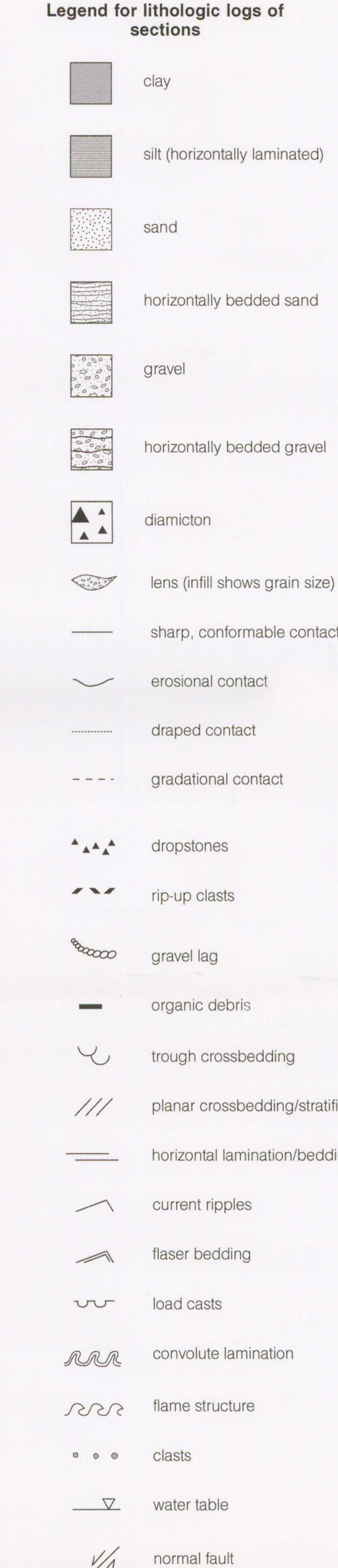
Drillhole 98-5-1008, geophysical logs (γ - natural gamma, SP - spontaneous potential, R - electrical resistivity), lithological log and interpretation. Split spoon sample interval is shown with bracket. Located on Open File 3901 map sheet 2 of 3



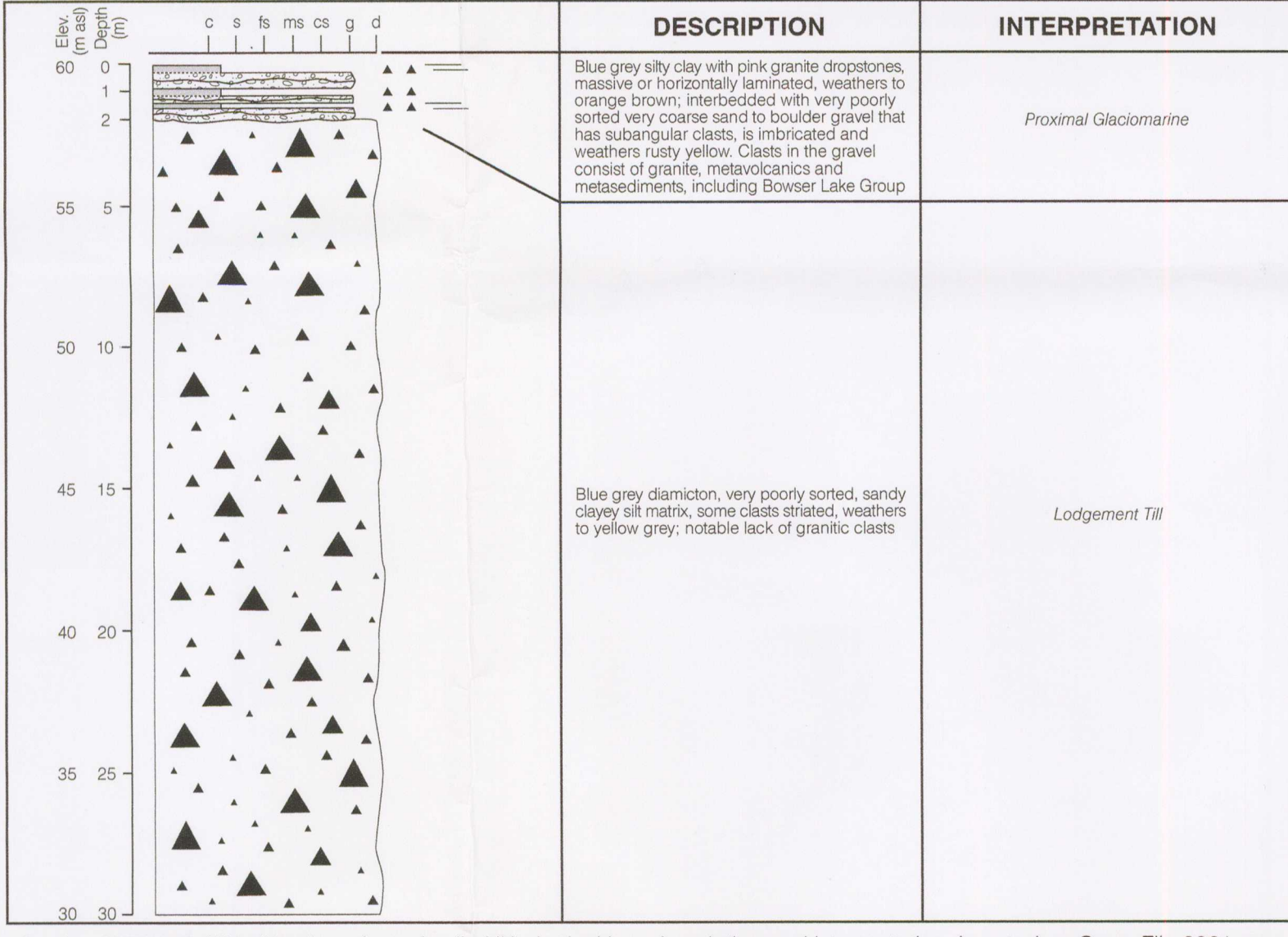
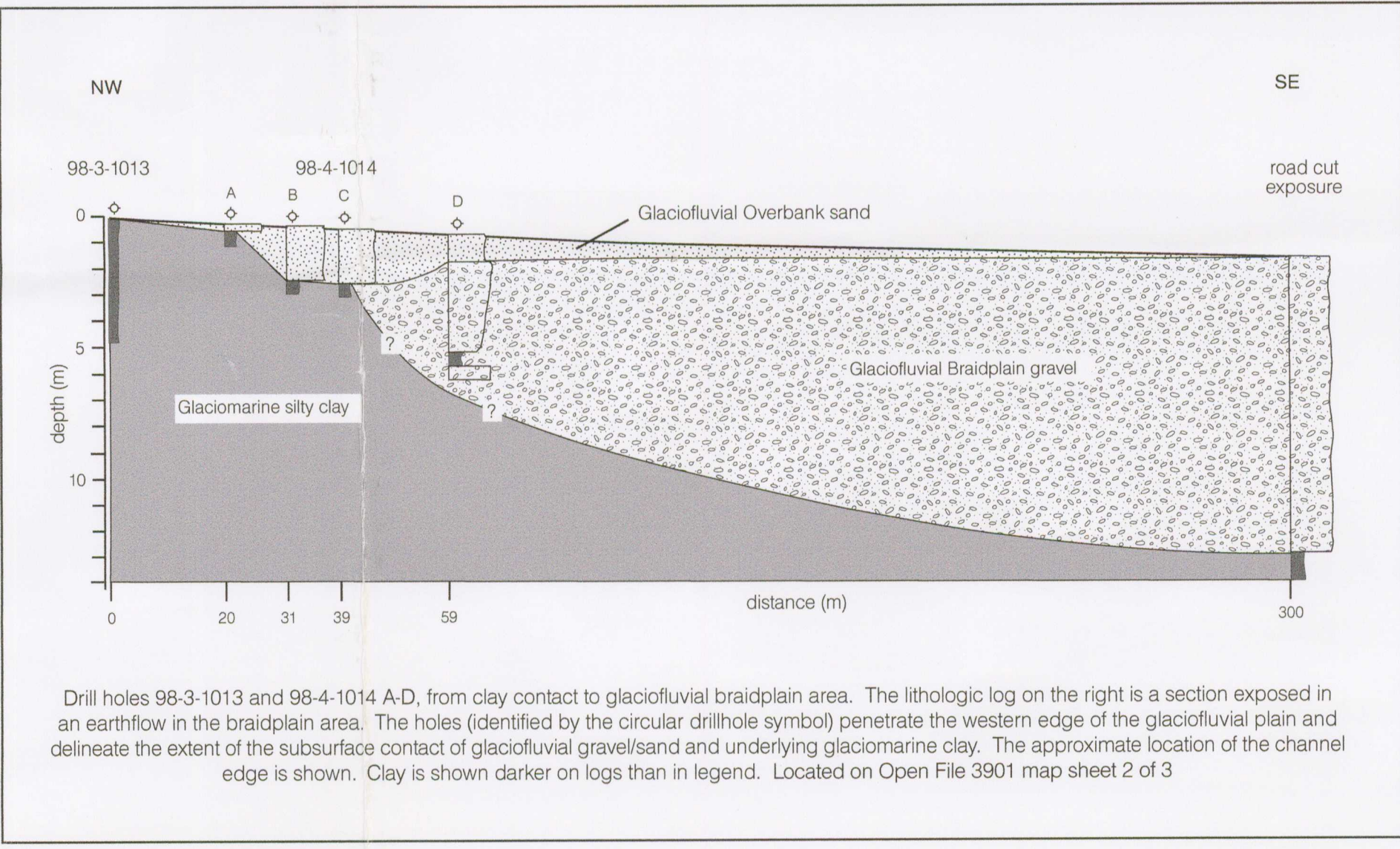
Upper half of Drillhole 98-6-1001, geophysical logs (γ - natural gamma, SP - spontaneous potential, R - electrical resistivity), lithological log and interpretation; split spoon sample interval is shown with a bracket. Located on Open File 3901 map sheet 2 of 3



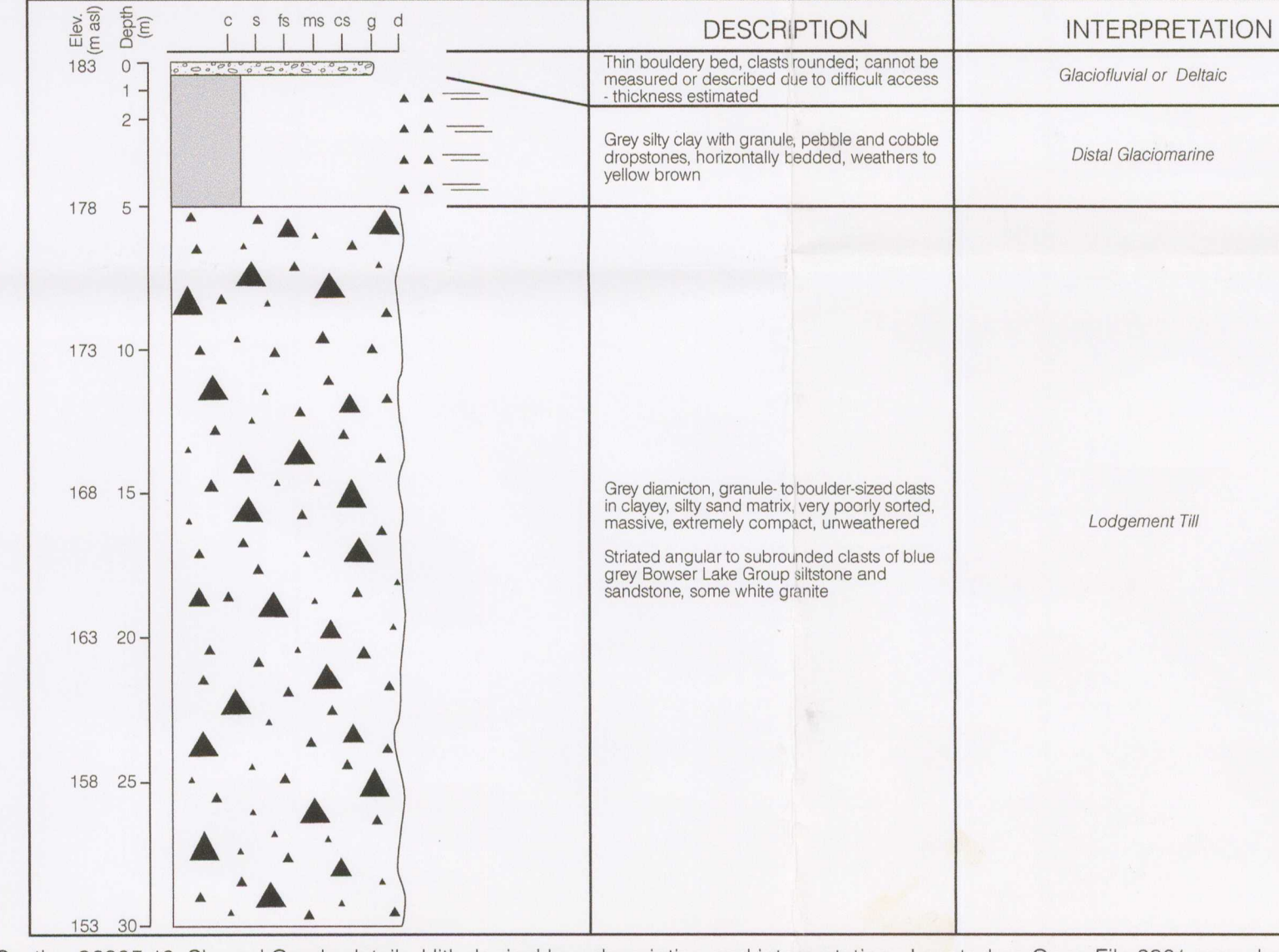
Lower half of Drillhole 98-6-1001, geophysical logs (γ - natural gamma, SP - spontaneous potential, R - electrical resistivity), lithological log, description and interpretation. Split spoon sample interval is shown with a bracket. Located on Open File 3901 map sheet 2 of 3



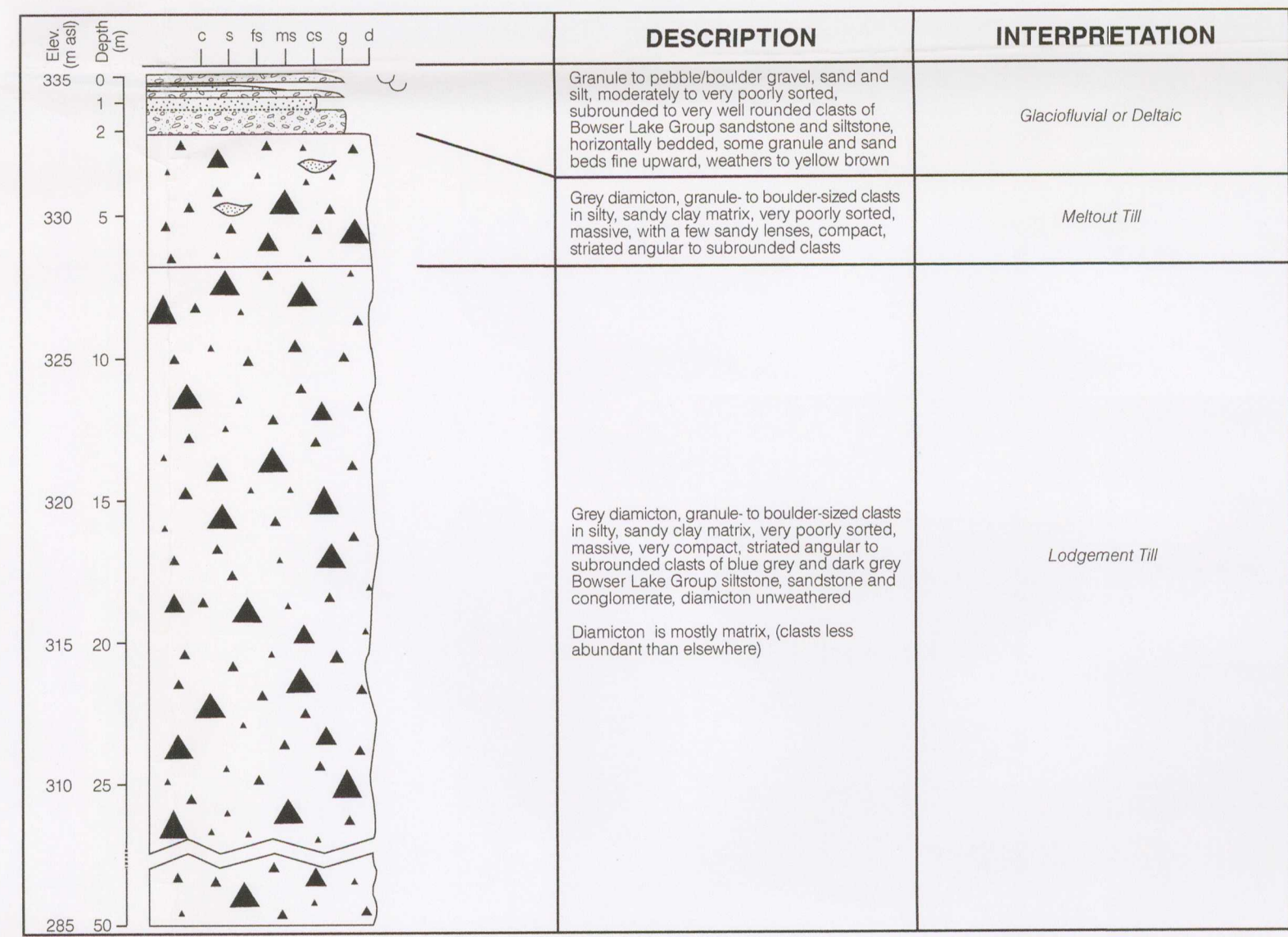
Drill hole 98-1-1007, detailed lithological log, description and environmental interpretation. Located on Open File 3901 map sheet 2 of 3



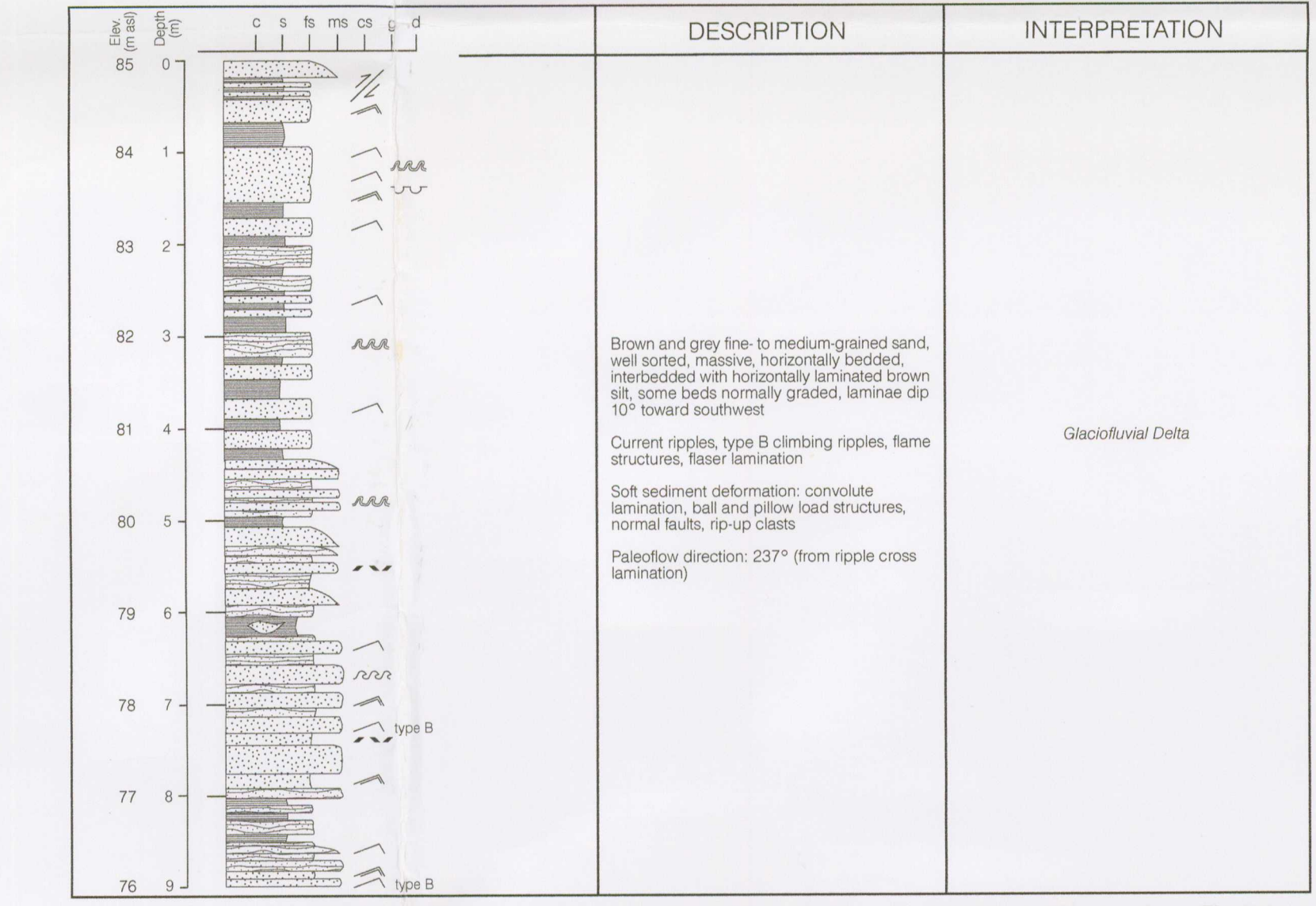
Section 98705-10, West Hastings Arm, detailed lithological log, description and interpretation. Located on Open File 3901 map sheet 2 of 3



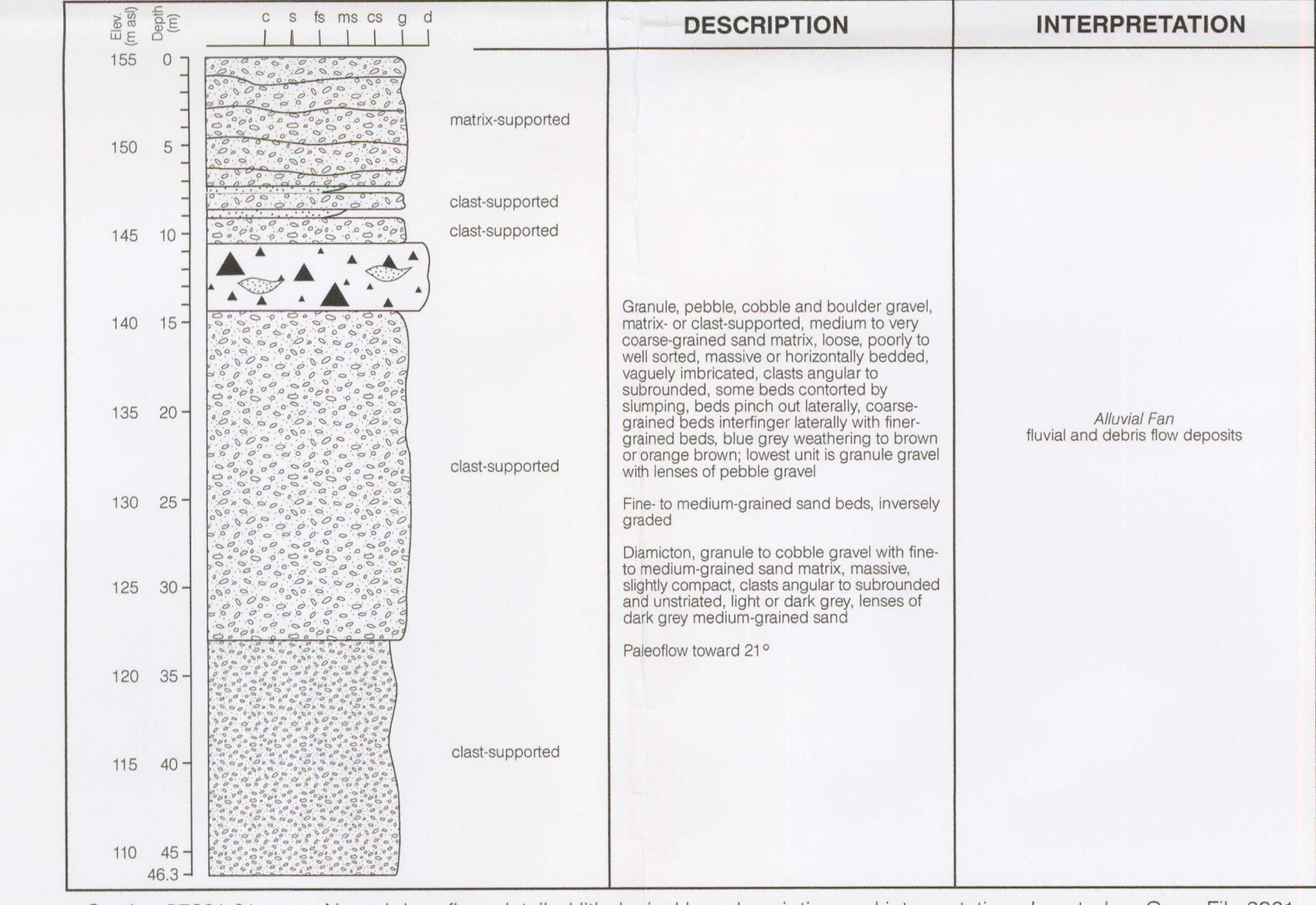
Section 98605-10, Shumal Creek, detailed lithological log, description and interpretation. Located on Open File 3901 map sheet 2 of 3



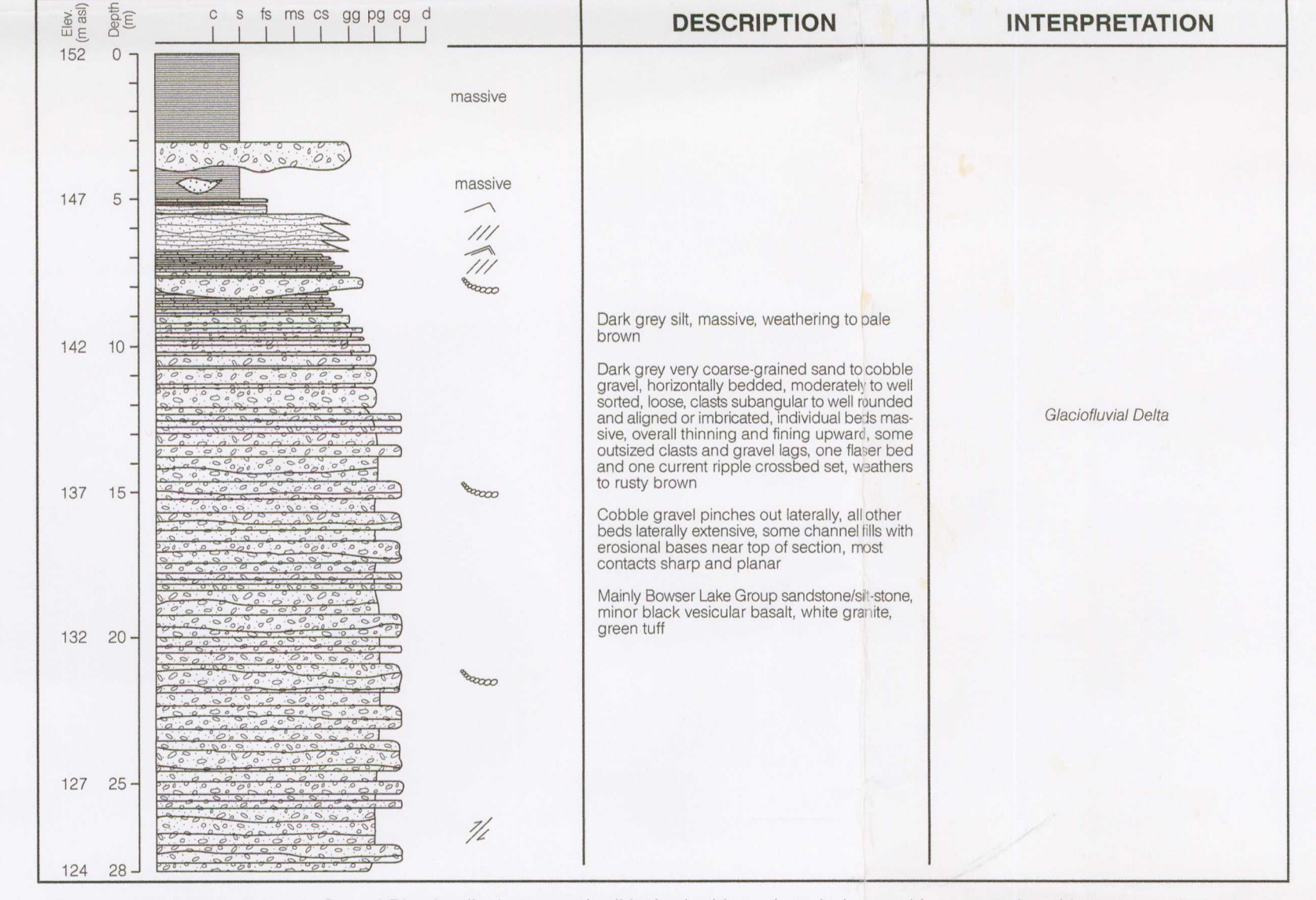
Section 98810-10, Hoan Creek, detailed lithological log, description and interpretation. Located on Open File 3901 map sheet 1 of 3



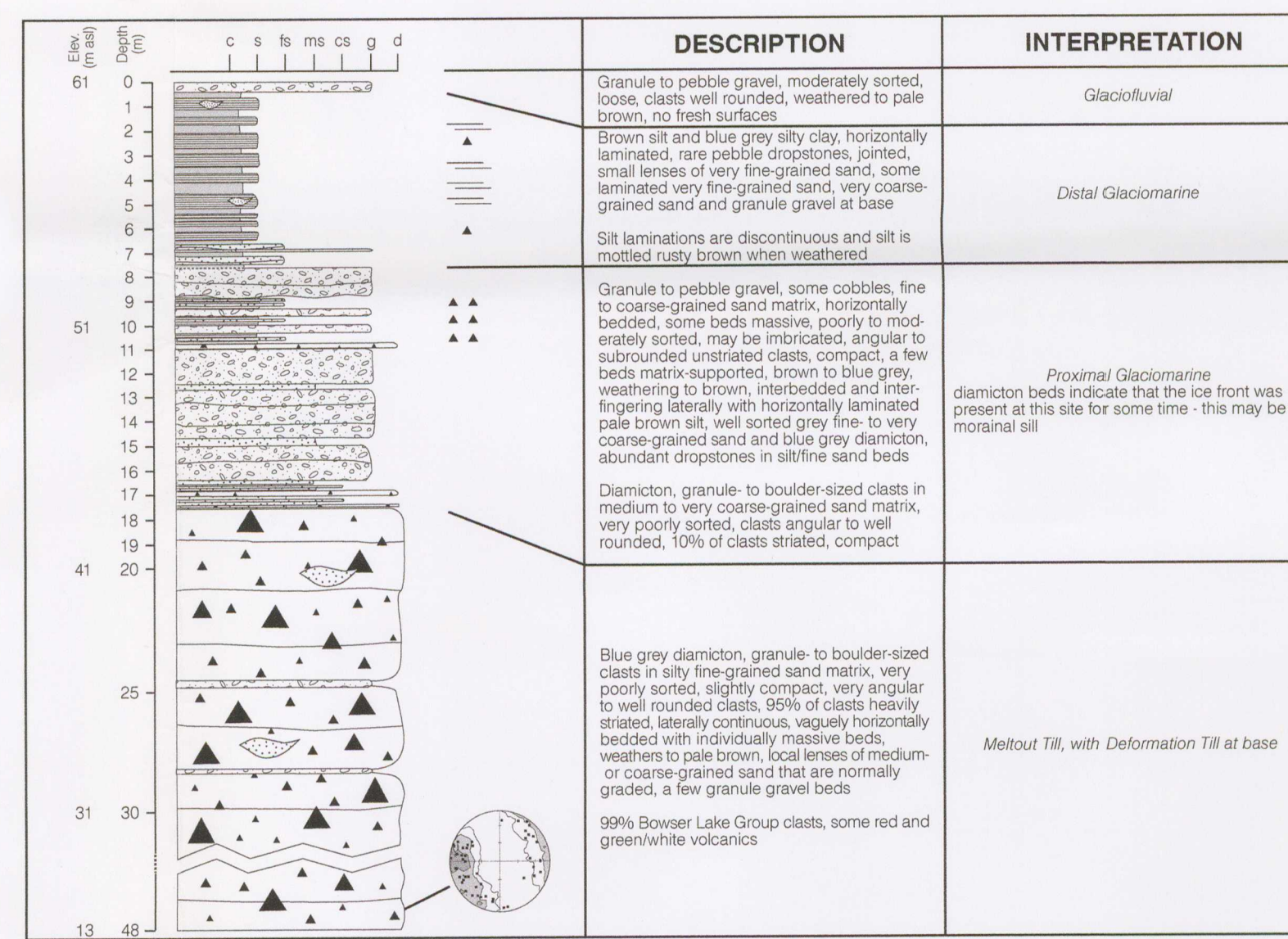
Section 97930-01, Irene Meadows Road, detailed lithological log, description and interpretation. Located on Open File 3901 map sheet 2 of 3



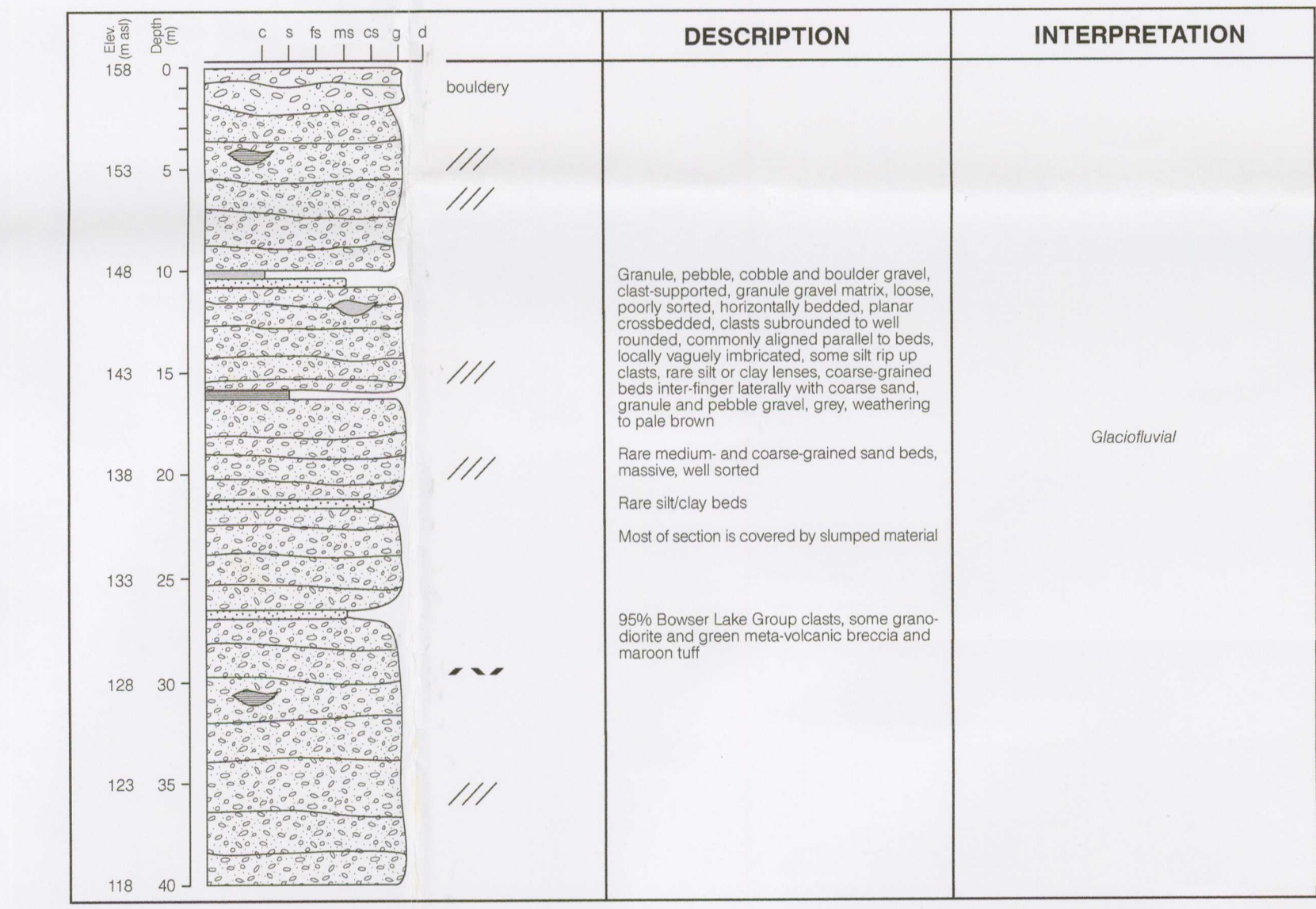
Section 97601-01, near Aiyahsh sava flow, detailed lithological log, description and interpretation. Located on Open File 3901 map sheet 2 of 3



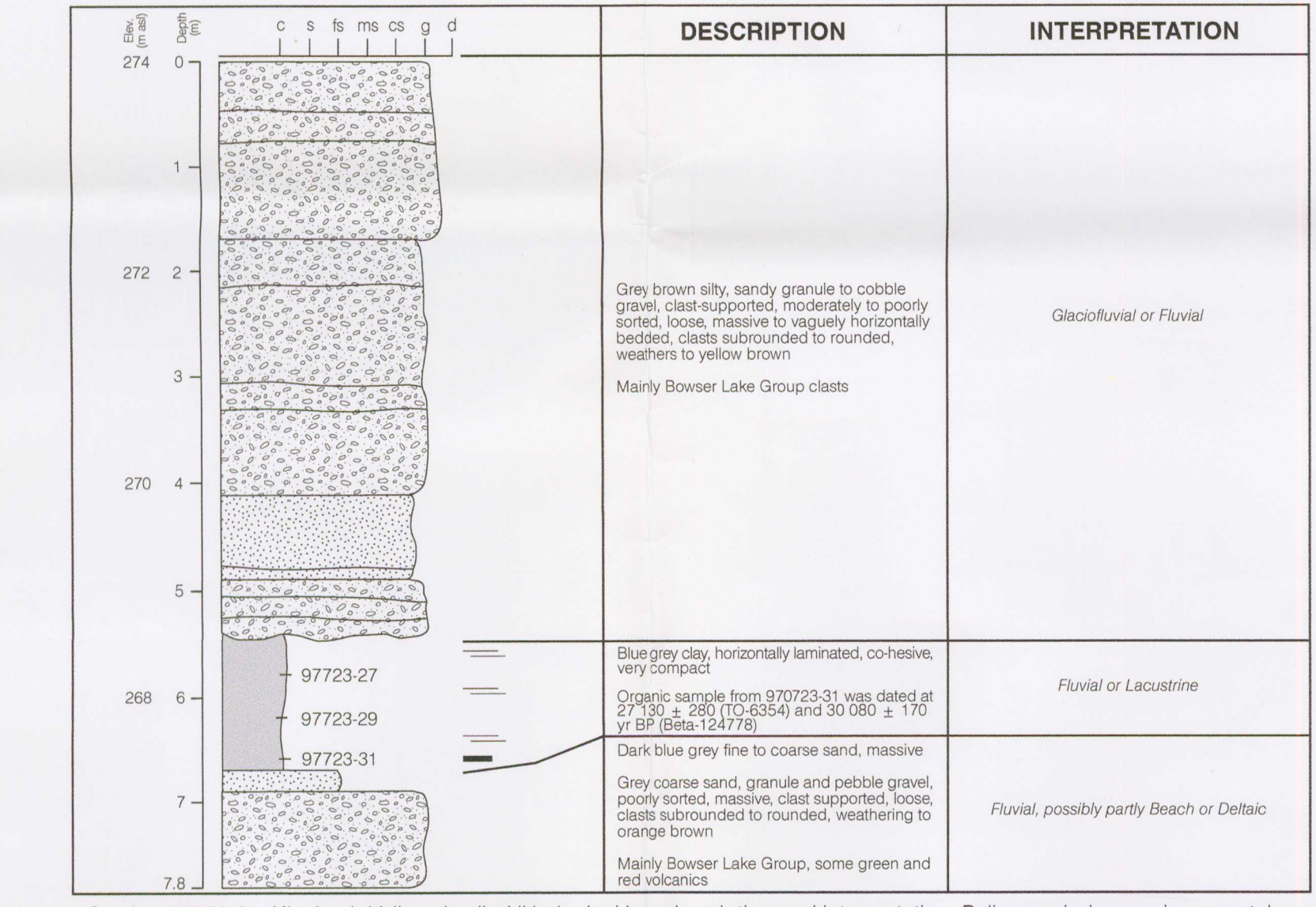
Section 97602-05, Aiyahsh Gravel Pit, detailed composite lithological log, description and interpretation. Note expanded gravel divisions. Located on Open File 3901 map sheet 2 of 3



Section 97809-01, Tsex Creek, detailed lithological log, description and interpretation. A till fabric from the base of the section is shown. Located on Open File 3901 map sheet 2 of 3



Section 97813-03, Tchlin River, detailed lithological log, description and interpretation. Located on Open File 3901 map sheet 2 of 3



Section 97723-01, Kinsuch Valley, detailed lithological log, description and interpretation. Pollen analysis samples were taken at sites 97723-27, 29 and 31. Located on Open File 3901 map sheet 1 of 3

