

DESCRIPTIVE NOTES
The Goat River 1:50,000 map area includes two distinct British Columbia mountain belts...

STRATIGRAPHY AND DEPOSITIONAL ENVIRONMENTS
Sketches of the map area showing the two major groups of Mesozoic rocks...

KAZA GROUP
The Kaza Group is divided into upper, middle, and lower informal subdivisions...

CARIBOO GROUP
The Cariboo Group is similar to the base formation (unit P1) of the lower, folded and more complex formation of the Cariboo Group...

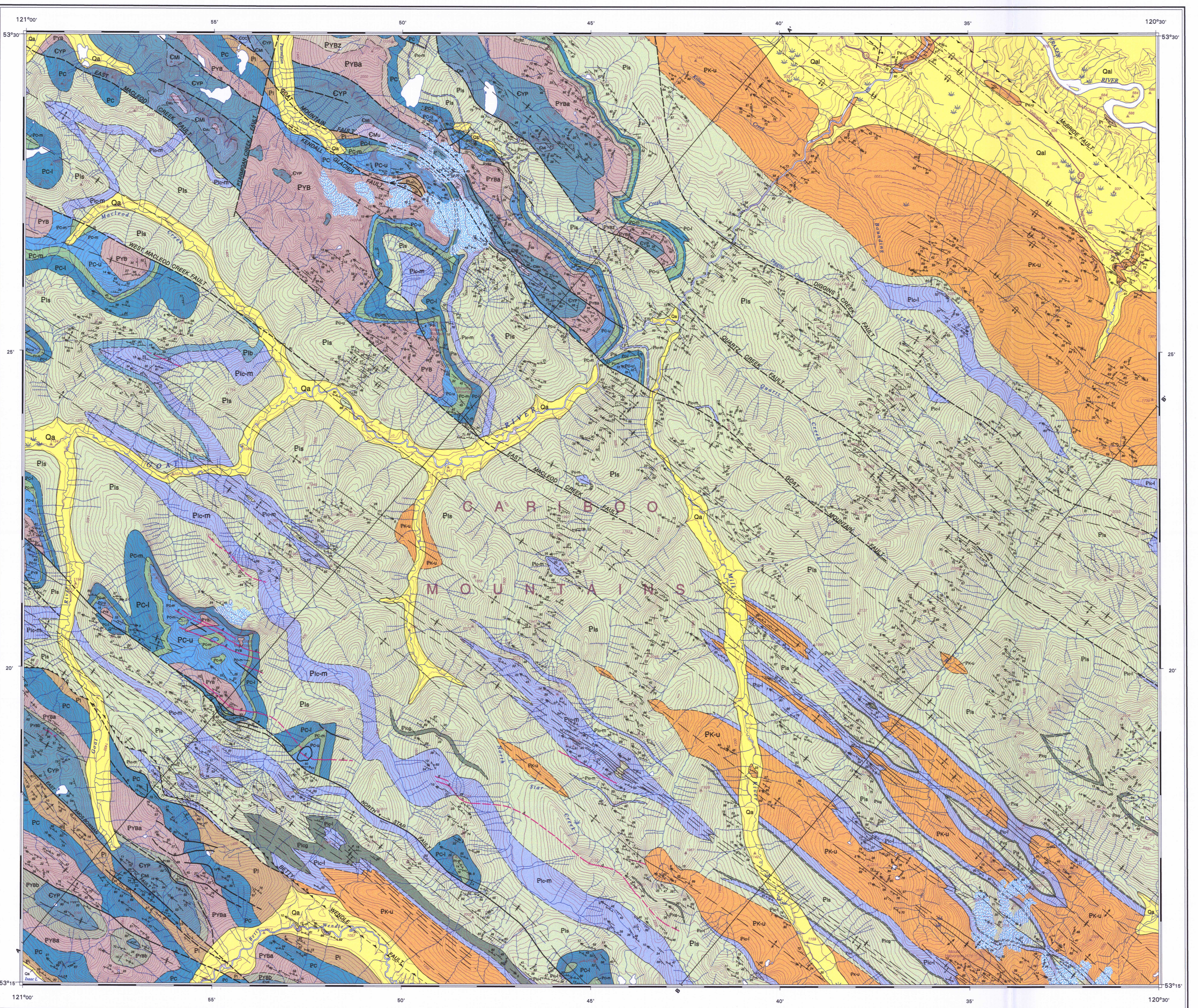
STRUCTURE
Structural geology of the Goat River map area is dominated by a gently north-west-trending, and reversibly right-lateral strike-slip fault...

METAMORPHISM
Rocks of the Goat River map area are entirely within the lower greenschist facies, with the principal minerals being quartz, chlorite, albite, actinolite, epidote, and biotite...

ECONOMIC GEOLOGY
Very few resources or additional geological information known to the user would be welcomed by the Geological Survey of Canada...

REFERENCES
Brown, H.L., Johnson, J.M., Lane, L.S., Murphy, G.C., and Ross, C.A. (1987)...

References list including Brown et al. (1987), Johnson et al. (1987), Lane et al. (1987), and others.



LEGEND, SCHEMATIC STRATIGRAPHIC RELATIONSHIPS, and detailed geological descriptions for various units like Quaternary, Cariboo Group, and Kaza Group.

Handwritten notes and numbers: 3/01, 1/01, 1/01, 1/01, 06/04/04, 2003A

NOT TO BE TAKEN FROM LIBRARY / NE PAS SORTIR DE LA BIBLIOTHÈQUE