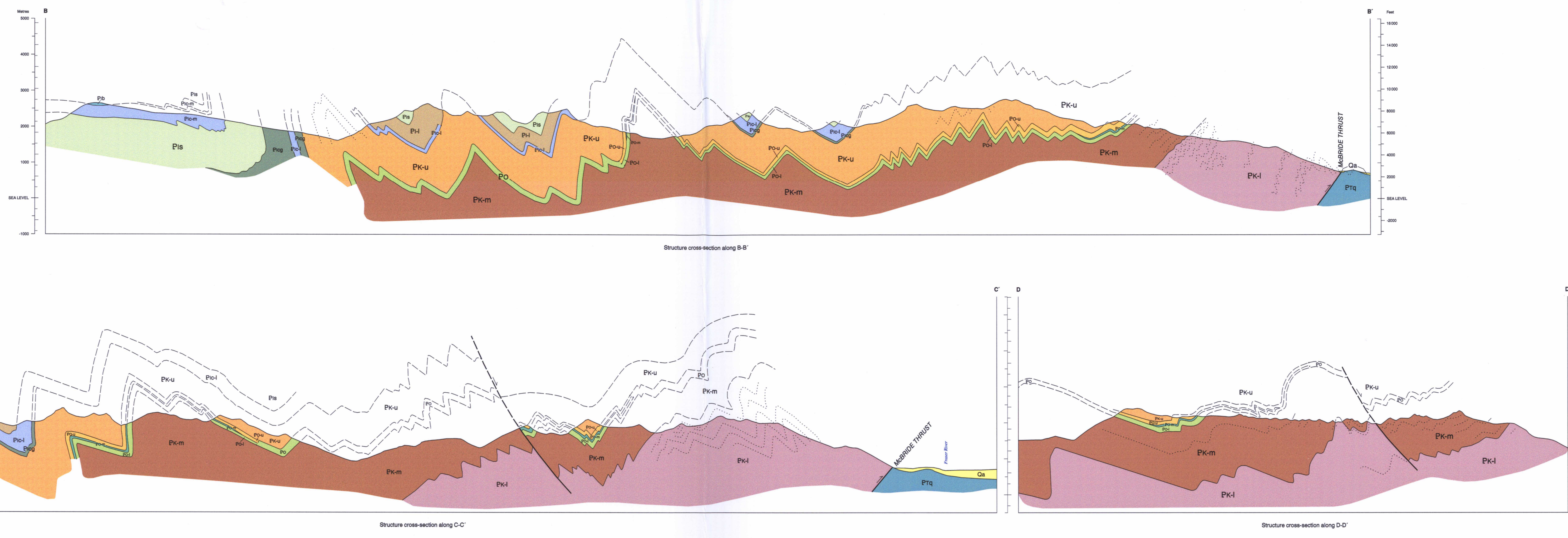


1967A
 1970
 1974
 1979
 05/10/17



DESCRIPTIVE NOTES

The data were compiled on the northwestern corner of the Middle 1:50,000 scale map area, which was mapped originally by Campbell et al. (1974) and has been updated to include subsequent mapping. The map is based on aerial photography, ground truthing, and field observations. The geological units are defined by their lithology and structural characteristics. The map is a revision of the geological map of the Eddy area, British Columbia, Canada, published in 1974.

STRATIGRAPHY AND DEPOSITIONAL ENVIRONMENTS

The stratigraphic column is divided into several units based on lithology and depositional environment. The units are: Quaternary (Qa, Qc), Neoproterozoic-Cambrian (Pk-u, Pk-m, Pk-l, Pk-i), and Middle Cambrian (Ca). The units are described in terms of their lithology, thickness, and depositional environment. The map shows the distribution of these units across the study area.

STRUCTURE

The structure of the study area is characterized by several faults and folds. The faults are defined by their orientation, dip, and sense of movement. The folds are defined by their shape and orientation. The map shows the distribution of these structures across the study area.

FACTS

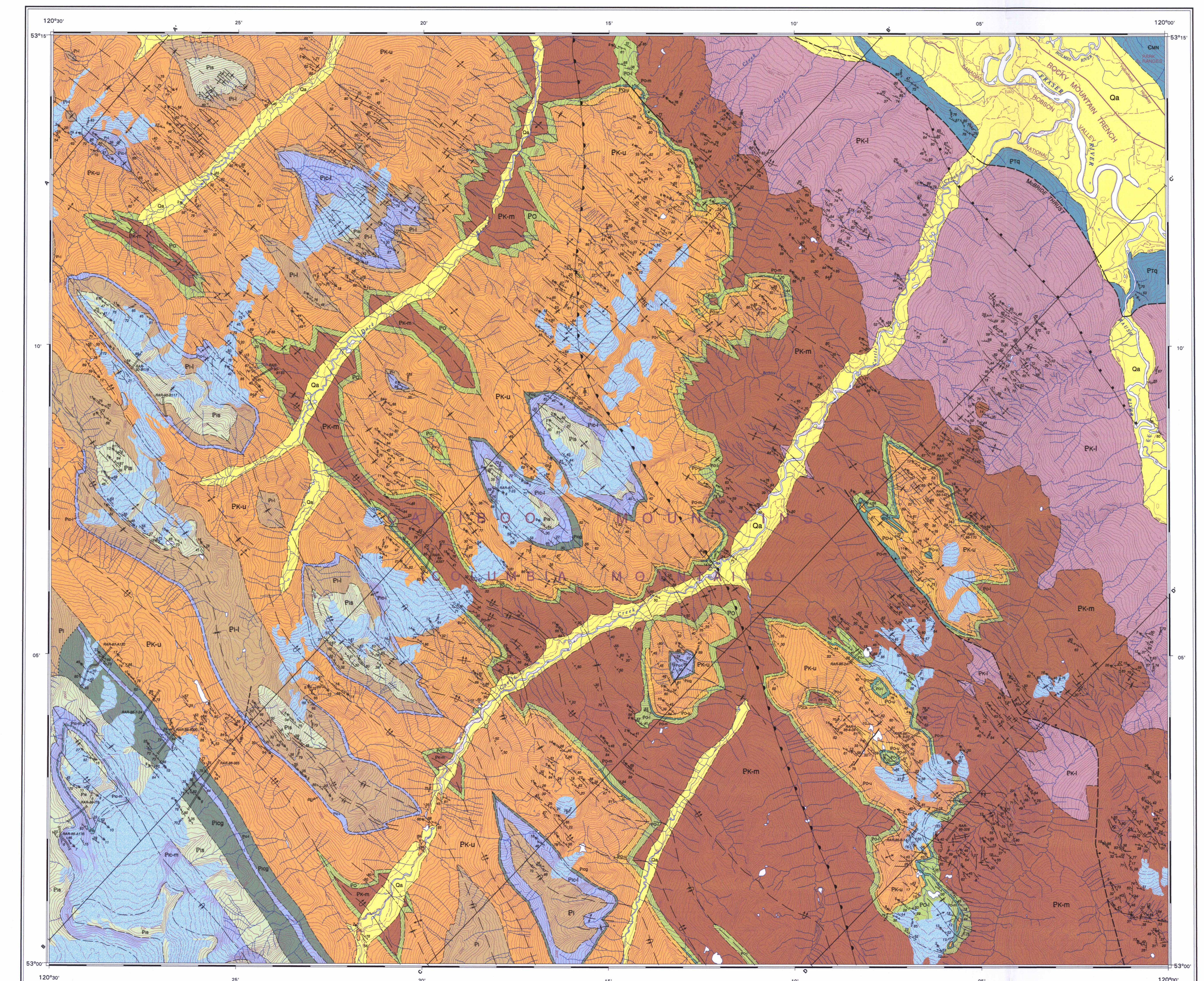
The Middle Cambrian is the northernmost of the map area. It is a major north-south trending belt that comprises the Eddy Group. The Eddy Group is a major north-south trending belt that comprises the Eddy Group. The Eddy Group is a major north-south trending belt that comprises the Eddy Group.

ECONOMIC GEOLOGY

No major mineral occurrences were discovered during mapping. The Eddy Group is generally a high-grade metamorphic belt. The Eddy Group is generally a high-grade metamorphic belt.

REFERENCES

- Campbell, R.E., 1974. Geology of the Eddy area, British Columbia. Geological Survey of Canada, Paper 72-10, 106 p.
- ... (other references)



LEGEND

The legend defines the symbols and colors used on the map. It includes a list of geological units with their descriptions and a list of structural features with their symbols. The legend is organized into sections: QUATERNARY, CARIBOO MOUNTAINS, SOUTHERN ROCKY MOUNTAIN TRENCH, and ROCKY MOUNTAINS. It also includes a section for SCHEMATIC STRATIGRAPHIC RELATIONSHIPS and a section for MAP LIBRARY CARTOGRAPHY.

QUATERNARY

- Qa, Qc: Quaternary deposits
- Qf: Emergent portion of fan deltas along east shore of Isaac Lake

CAMBRIAN

- Ca: Middle Cambrian

NEOPROTEROZOIC-CAMBRIAN

- Pk-u: Upper member
- Pk-m: Middle member
- Pk-l: Lower member
- Pk-i: Intermediate member

SCHEMATIC STRATIGRAPHIC RELATIONSHIPS

The schematic shows the relative positions of the geological units in different areas: CARIBOO MOUNTAINS, SOUTHERN ROCKY MOUNTAIN TRENCH, and ROCKY MOUNTAINS.

MAP LIBRARY CARTOGRAPHY

The cartography section lists various symbols used for structural features, such as faults, folds, and lineaments. It includes a list of symbols and their corresponding descriptions.