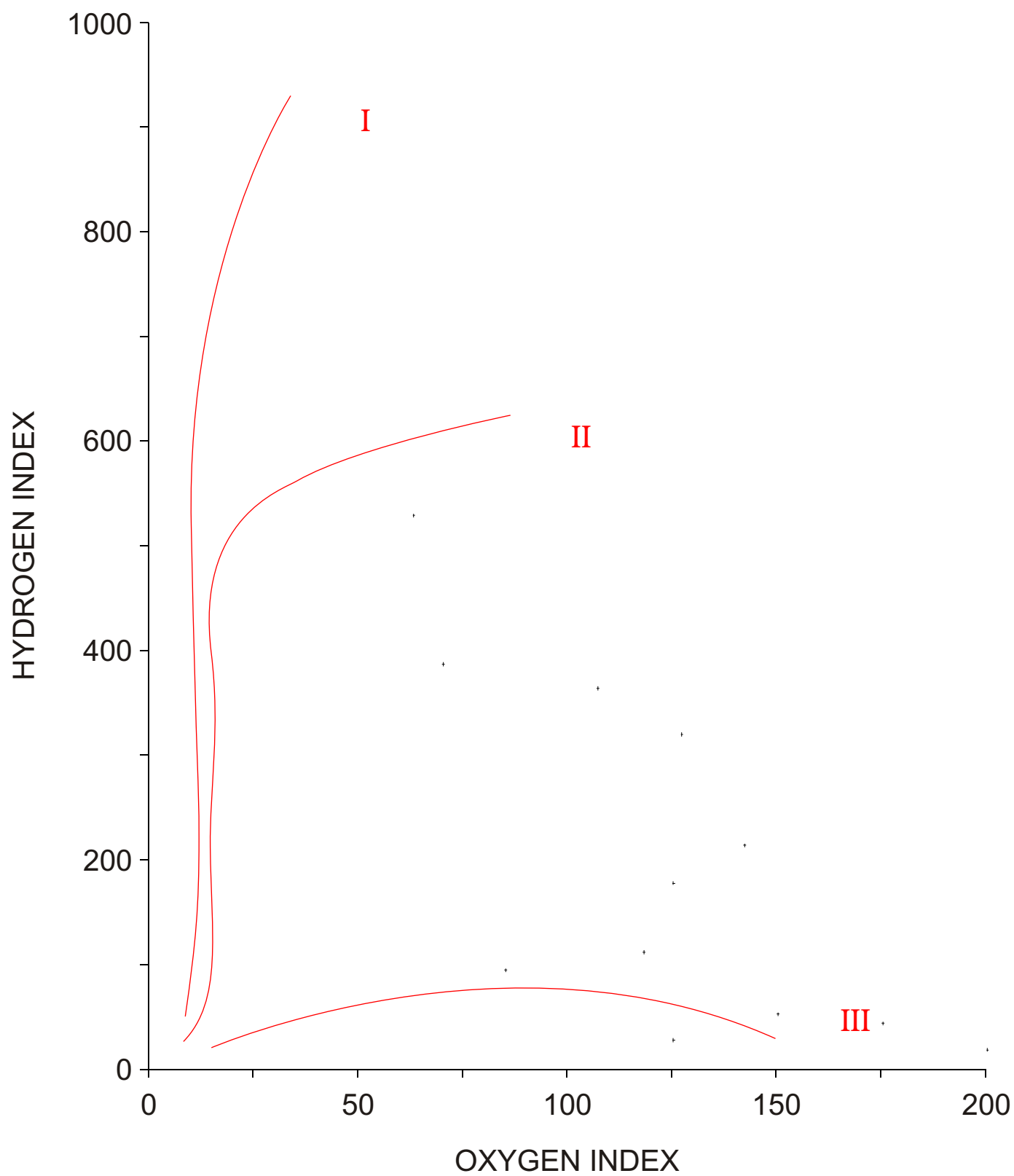
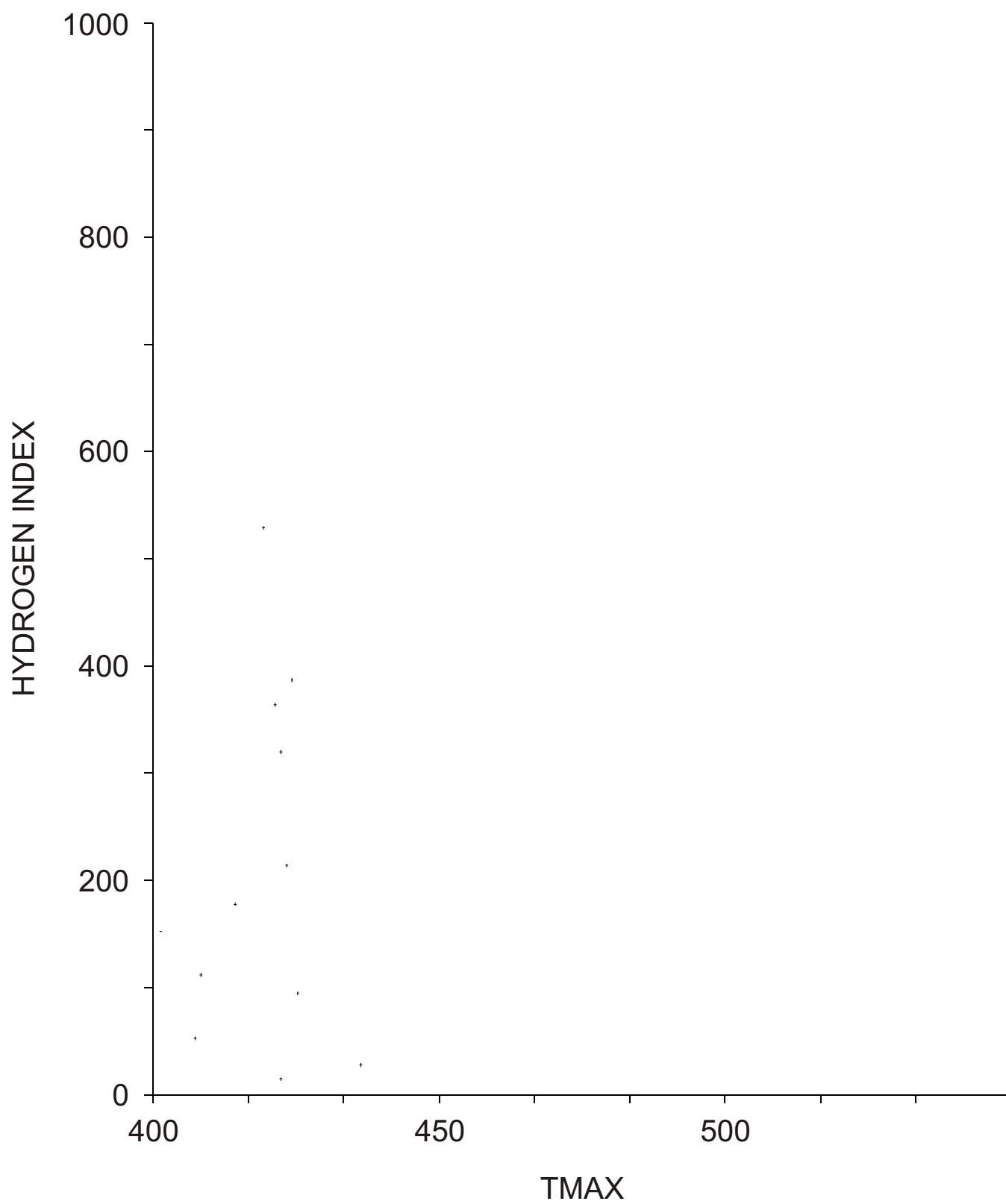


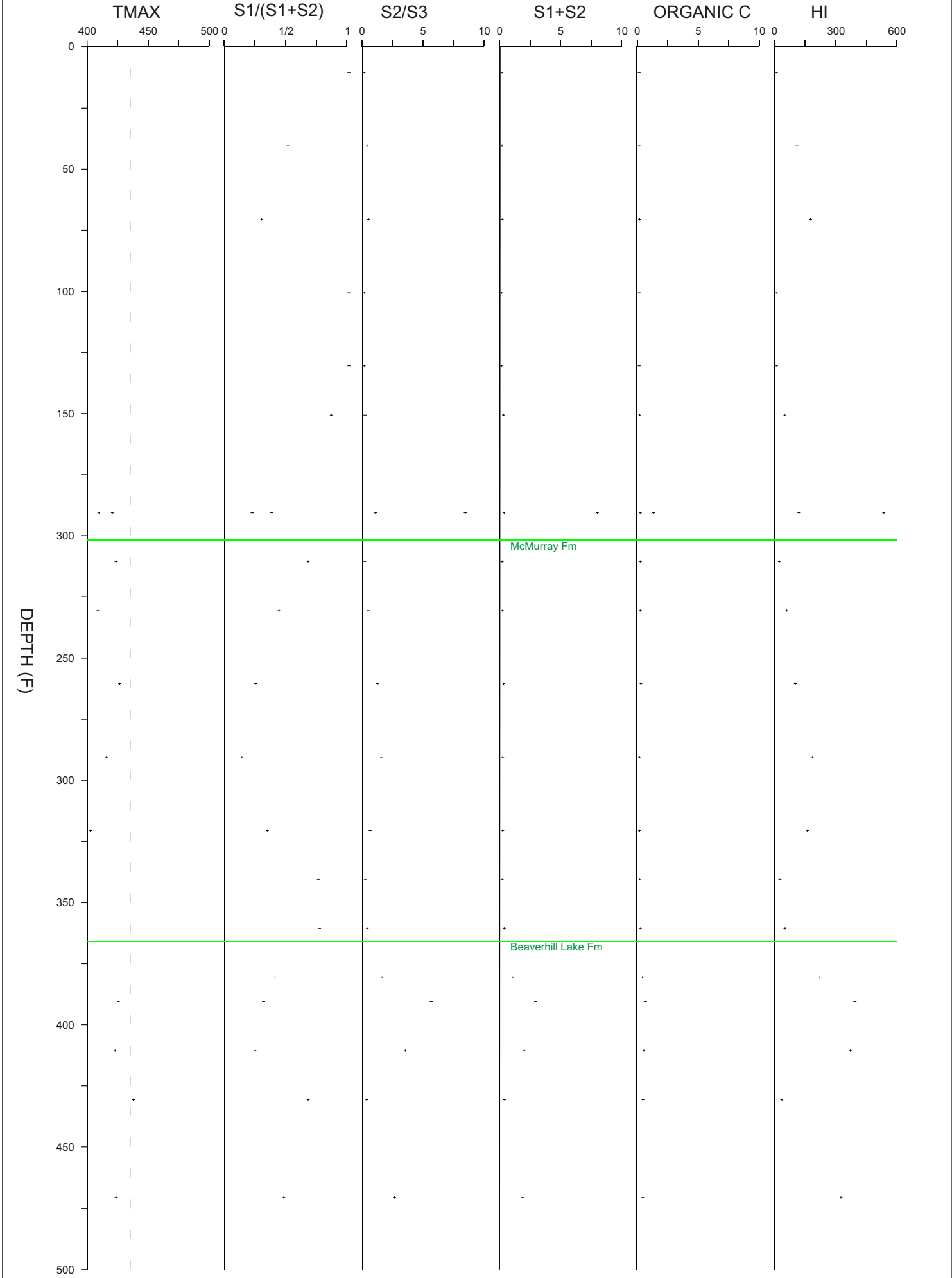
# Shell Eatha Ev 13-31-96-6W4



# Shell Eatha Ev 13-31-96-6W4



Shell Eatha Ev 13-31-96-6W4



Shell Eatha Ev 13-31-96-6W4

| DEPTH | TOC  | PI   | S1+S2 | TMAX | S1   | S2   | S3   | HI  | OI  |
|-------|------|------|-------|------|------|------|------|-----|-----|
| 10    | 0.01 | 1.00 | 0.02  | 0    | 0.02 | 0.00 | 0.06 | 0   | 600 |
| 40    | 0.01 | 0.50 | 0.02  | 312  | 0.01 | 0.01 | 0.04 | 100 | 400 |
| 70    | 0.03 | 0.29 | 0.07  | 340  | 0.02 | 0.05 | 0.14 | 166 | 466 |
| 100   | 0.01 | 1.00 | 0.01  | 0    | 0.01 | 0.00 | 0.04 | 0   | 400 |
| 130   | 0.01 | 1.00 | 0.01  | 0    | 0.01 | 0.00 | 0.04 | 0   | 400 |
| 150   | 0.05 | 0.86 | 0.14  | 312  | 0.12 | 0.02 | 0.27 | 40  | 540 |
| 190   | 0.11 | 0.37 | 0.19  | 408  | 0.07 | 0.12 | 0.13 | 109 | 118 |
| 190   | 1.18 | 0.21 | 7.84  | 419  | 1.63 | 6.21 | 0.75 | 526 | 63  |
| 210   | 0.08 | 0.67 | 0.03  | 422  | 0.02 | 0.01 | 0.18 | 12  | 225 |
| 230   | 0.08 | 0.43 | 0.07  | 407  | 0.03 | 0.04 | 0.12 | 50  | 150 |
| 260   | 0.14 | 0.24 | 0.17  | 425  | 0.04 | 0.13 | 0.12 | 92  | 85  |
| 290   | 0.04 | 0.13 | 0.08  | 414  | 0.01 | 0.07 | 0.05 | 175 | 125 |
| 320   | 0.04 | 0.33 | 0.09  | 401  | 0.03 | 0.06 | 0.12 | 150 | 300 |
| 340   | 0.06 | 0.75 | 0.04  | 316  | 0.03 | 0.01 | 0.12 | 16  | 200 |
| 360   | 0.12 | 0.76 | 0.21  | 389  | 0.16 | 0.05 | 0.21 | 41  | 175 |
| 380   | 0.26 | 0.40 | 0.91  | 423  | 0.36 | 0.55 | 0.37 | 211 | 142 |
| 390   | 0.50 | 0.30 | 2.75  | 424  | 0.83 | 1.92 | 0.35 | 384 | 70  |
| 410   | 0.39 | 0.23 | 1.84  | 421  | 0.43 | 1.41 | 0.42 | 361 | 107 |
| 430   | 0.31 | 0.67 | 0.24  | 436  | 0.16 | 0.08 | 0.39 | 25  | 125 |
| 470   | 0.29 | 0.47 | 1.73  | 422  | 0.81 | 0.92 | 0.37 | 317 | 127 |

Mcmurray Fm 202F  
Beaverhill Lake Fm 366F  
Granite Wash 777F  
Precambrian System 870F