



INTRODUCTION
This project was prepared to meet the needs of the Geological Survey of Canada (GSC) and the Nunavut Government (NG) for a geological map of the Piling Lake area...

DESCRIPTION OF THE AREA
The Piling Lake area is situated in the northern part of the Piling Group and is bounded to the north by the Foley Bay and to the east by the Foley Strait...

TECTONIC SETTING
The Piling Lake area is situated in the northern part of the Piling Group and is bounded to the north by the Foley Bay and to the east by the Foley Strait...

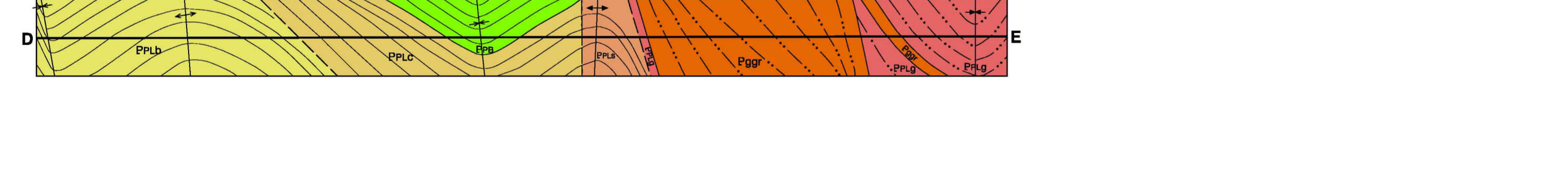
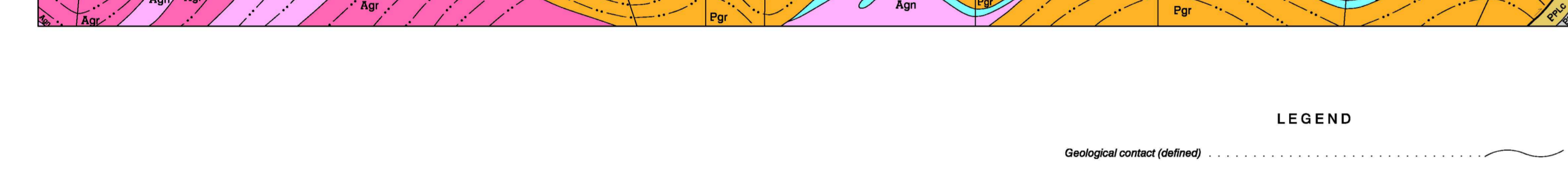
STRUCTURE
The Piling Lake area is situated in the northern part of the Piling Group and is bounded to the north by the Foley Bay and to the east by the Foley Strait...

REFERENCES
Bathurst, K.R., and Swenson, R.J. 1987. Geology and structure of the northern part of the Foley Bay, northern part of the Piling Group, Nunavut Territory, Canada...

ACKNOWLEDGEMENTS
The author wishes to thank the Nunavut Government for their support of this project. Special thanks are due to the staff of the Geological Survey of Canada...

CONTACT INFORMATION
Geological Survey of Canada, 11 Innovation Boulevard, Ottawa, Ontario K1A 0S8, Canada. Telephone: (613) 993-9231. Fax: (613) 993-9232.

LEGEND
Geological contact (dashed)
Faulting, graben, arrow on hanging wall
Foliation, gneissosity
Intrusion
Syncline
Anticline
Synform
Antiform



DIAGRAMMATIC CROSS-SECTIONS ALONG A-B-C, D-E, AND F-G

Geological compilation by M.R. St-Onge, D. Corrigan, and D.J. Scott, 2000

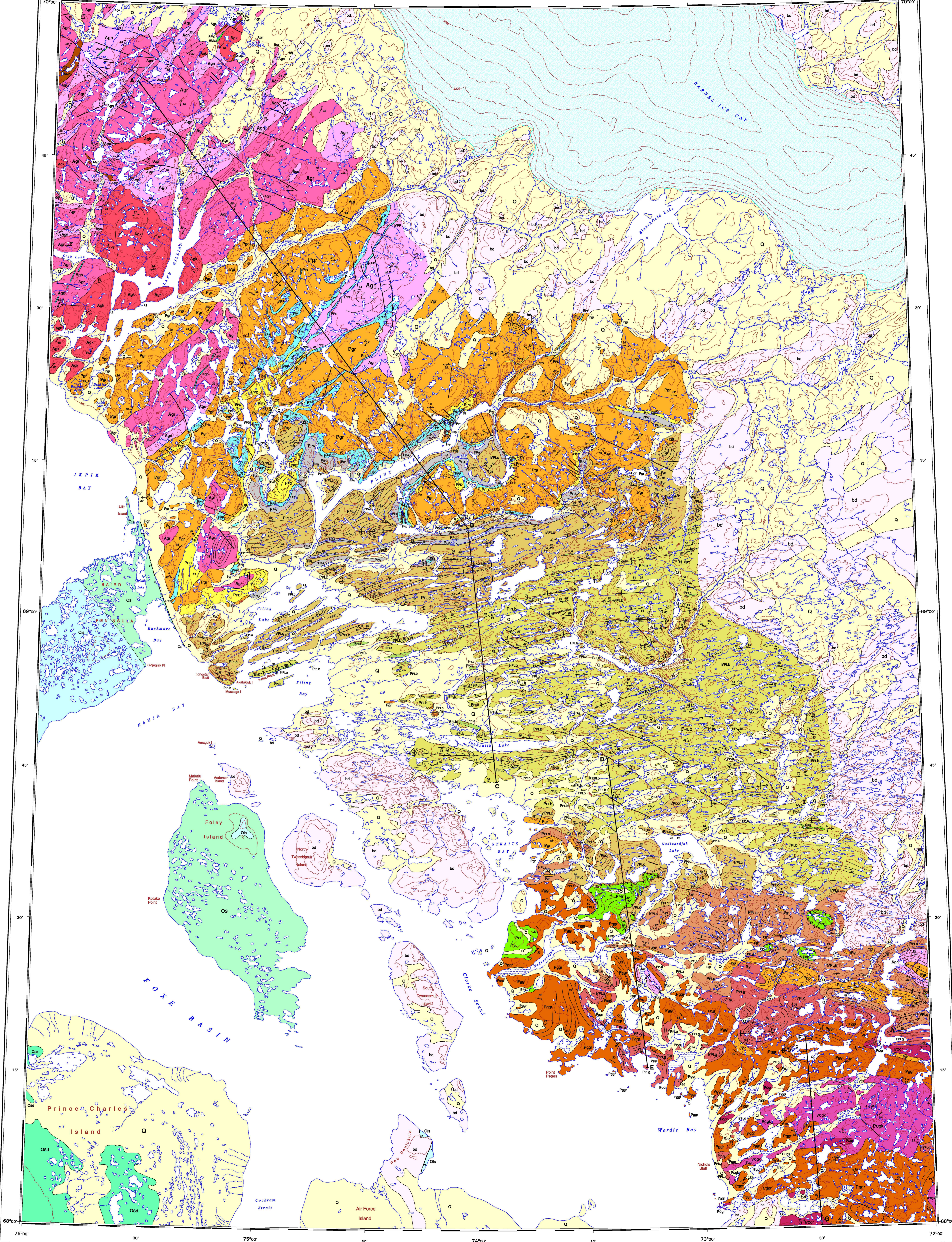
Palaeozoic geology from report by M.R. St-Onge, D. Corrigan, and D.J. Scott, 2000

Digital compilation by E. Ewert, Earth Sciences Sector, Information Division (ESD) 110

Any revision or additional geological information known to the user would be welcomed by the Geological Survey of Canada

Proximity to the North Magnetic Pole causes the magnetic compass to be unreliable in this area

Scale 1:250 000. Contour interval 10 m (NTS 37.4) and 200 m (NTS 37.0)



LEGEND
QUATERNARY
PLIOCENE RECENT
ORDOVICIAN AND SILURIAN
PALEOZOIC
PHOTONIC
NEOARCHAIC

PALEOPROTEROZOIC
Pum
Pgr
Pgrb
Pgrc
Pgrd
Pgrf
Pgrg
Pgrh
Pgrj
Pgrk

FLINT LAKES FORMATION
Pflc
Pflb
Pfla
Pflg
Pflh
Pflj
Pflk

ASTARTE RIVER FORMATION
Pdra
Pdrb
Pdrf
Pdrh
Pdrj
Pdrk

NEOARCHAIC
Agn
Agnb
Agnf
Agnh
Agnj
Agnk

Geological contact (dashed, approximated)
Line of best fit, 2000
Fault line
Geological contact (dashed, approximated), level on hanging wall

Geological contact (dashed, approximated)
Line of best fit, 2000
Fault line
Geological contact (dashed, approximated), level on hanging wall

Geological contact (dashed, approximated)
Line of best fit, 2000
Fault line
Geological contact (dashed, approximated), level on hanging wall

Geological contact (dashed, approximated)
Line of best fit, 2000
Fault line
Geological contact (dashed, approximated), level on hanging wall

OPEN FILE
DOSSIER PUBLIC
4003

Recommended citation: St-Onge, M.R., Corrigan, D., and Scott, D.J. 2000. Geology, Piling Lake, Nunavut. Geological Survey of Canada, Open File 4003, scale 1:250 000.



OPEN FILE 4003
GEOLOGY
PILING LAKE
NUNAVUT

Scale 1:250 000. Contour interval 10 m (NTS 37.4) and 200 m (NTS 37.0)

Unsupervised Territory Member, Project 1999
Revised by: M. St-Onge, D. Corrigan, and D.J. Scott, 2000

Recommended citation: St-Onge, M.R., Corrigan, D., and Scott, D.J. 2000. Geology, Piling Lake, Nunavut. Geological Survey of Canada, Open File 4003, scale 1:250 000.