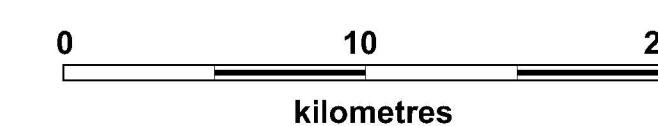




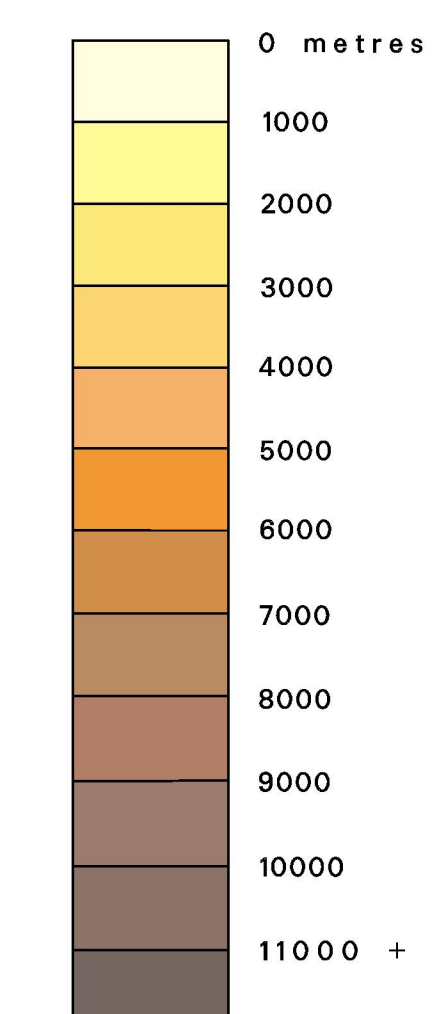
DEPTH TO NEAR PRE-MESOZOIC BASEMENT JEANNE D'ARC BASIN, GRAND BANKS OF NEWFOUNDLAND

T. Edwards
Digital compilation and editing
by: C. Goucher and P. Moir



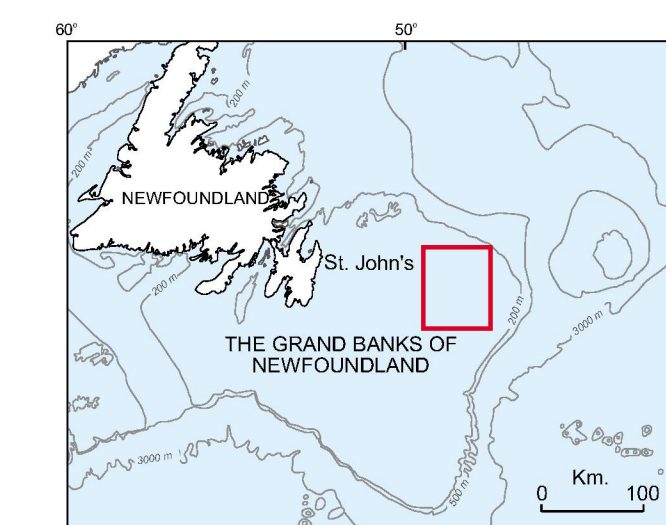
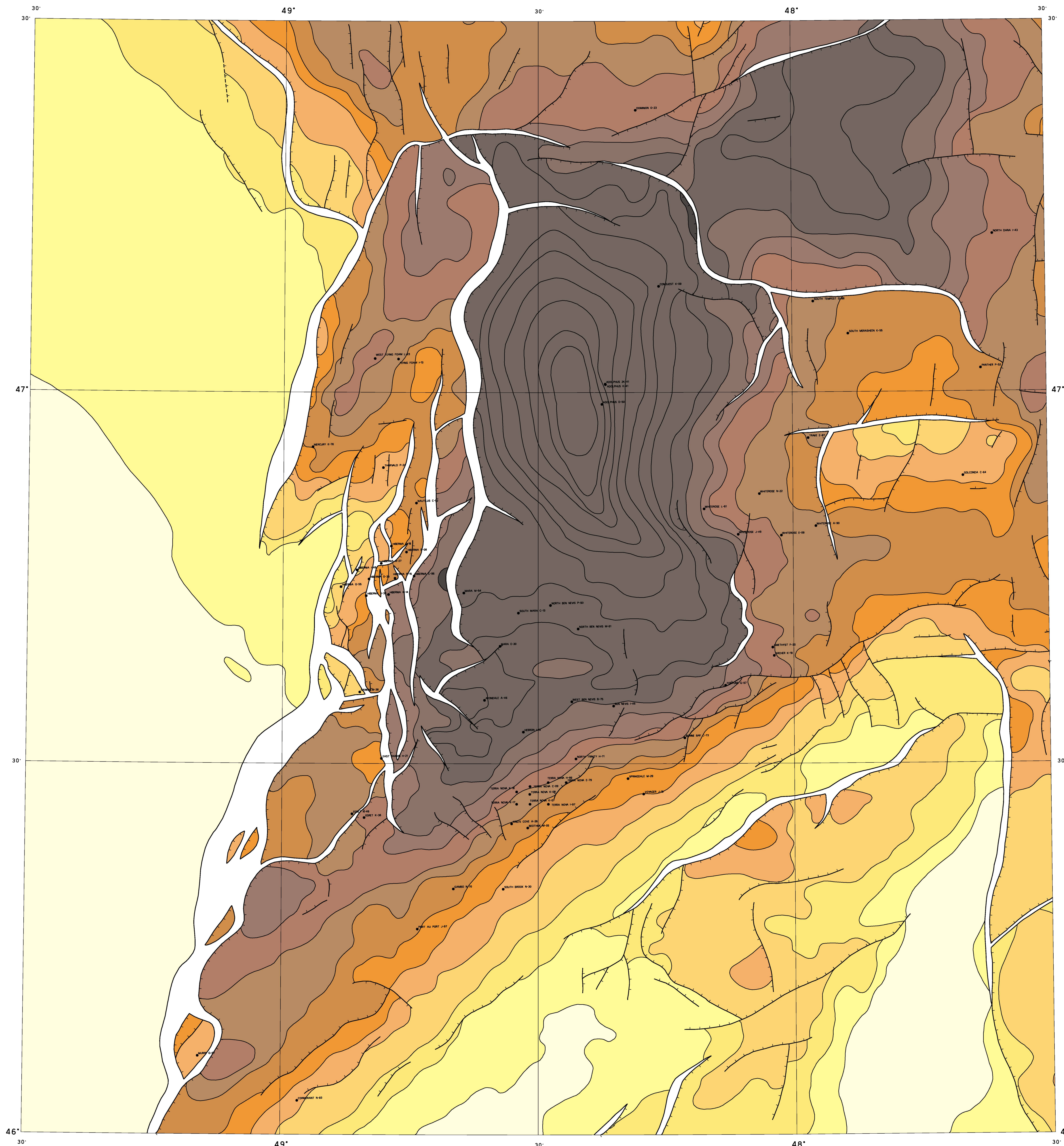
Original Scale 1 : 250 000
Projection: Lambert Conformal
(standard parallels 45° N and 66° N)

Contour interval = 1000 m



KEY MAP FEATURES

- Fault/assumed
- Geological Boundary
- Salt Diapir
- Well Location



Location map

OPEN FILE
DOSSIER PUBLIC
3755
GEOLOGICAL SURVEY OF CANADA
COMMISSION GÉOLOGIQUE DU CANADA
OTTAWA
11/2000

SHEET 5 OF 10
FEUILLET 5 DE 10

Recommended citation:
Edwards, T., Moir, P., and Collins, K.
2000. Structure and Isopach Maps of the Jeanne d'Arc Basin, Grand Banks, Newfoundland.
Geological Survey of Canada, Open File 3755.