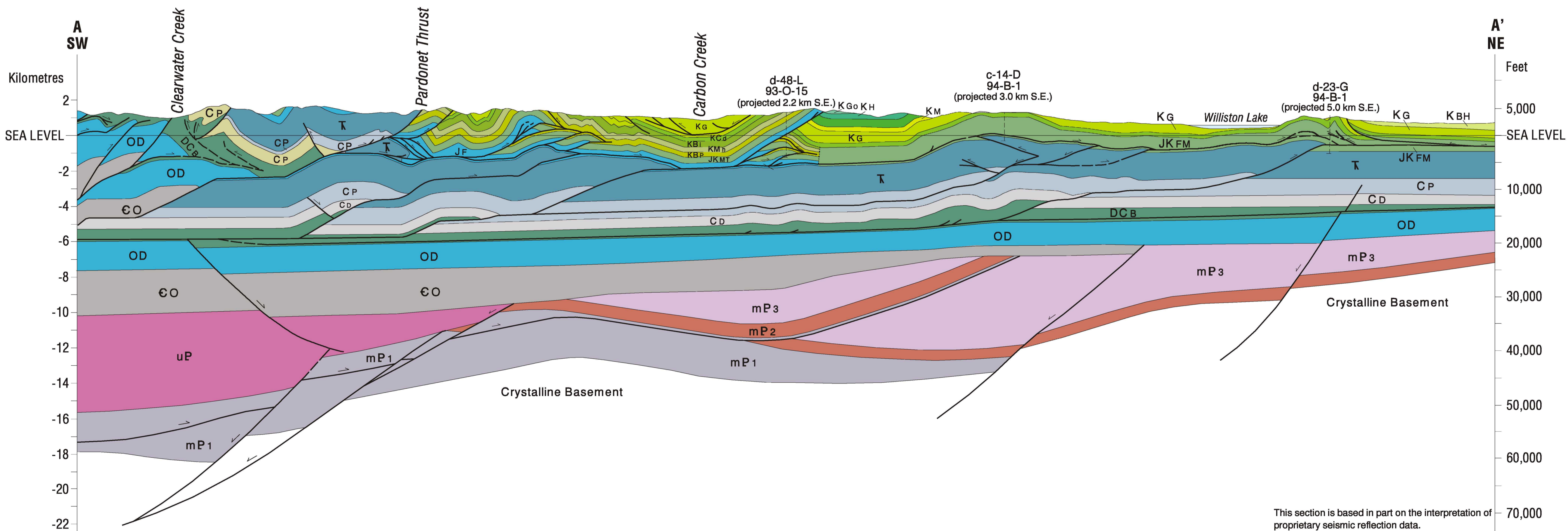
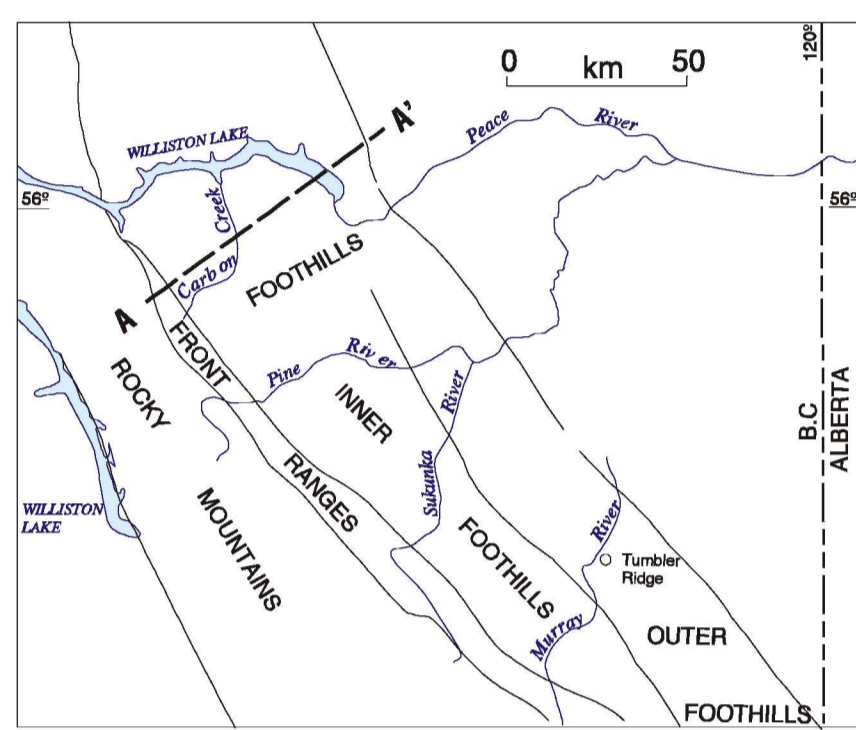


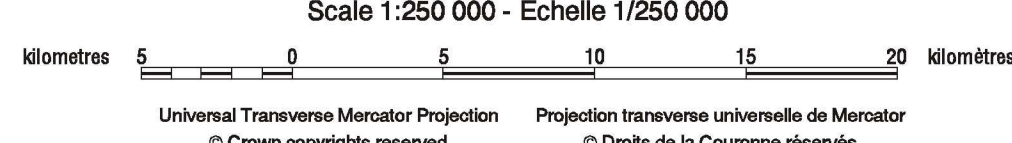
QUATERNARY	PLEISTOCENE AND RECENT	Qal	Gravel, sand, silt, clay, fill
CRETACEOUS	UPPER CRETACEOUS	Kd	DUNVEGAN FORMATION: sandstone; shale; minor conglomerate
		KCr	CRUISER FORMATION: dark grey, sideritic shale
	LOWER CRETACEOUS	KGo	GOODRICH FORMATION: sandstone; minor shale
		KH	HASLER FORMATION: dark grey, sideritic shale
		KGH	GATES, HULCROSS AND BOULDER CREEK FORMATIONS: sandstone; shale; mudstone; coal; conglomerate
		KM	MOOSEBAR FORMATION: dark grey, sideritic shale
		KKa	BULLHEAD GROUP (Koa-Ka)
		KG	GETHING FORMATION: sandstone; shale; conglomerate; coal
		KCa	CADOMN FORMATION: conglomerate; sandstone
		KMi	MINNES GROUP (Ka)
		KBi	BICKFORD FORMATION: sandstone; siltstone; shale; coal
		KMn	MONACH FORMATION: sandstone
		KSp	BEATTIE PEAKS FORMATION: silty mudstone; sandstone
JURASSIC AND CRETACEOUS	UPPER JURASSIC AND LOWER CRETACEOUS	JKM	MONTEITH FORMATION: fine grained sandstone; minor shale
JURASSIC		JF	FERNIE FORMATION: shale; siltstone; minor sandstone
TRIASSIC	UPPER TRIASSIC	T2	CHARLIE LAKE, BALDONNEL, PARDONET AND (LOCALLY) BOCCOCK FORMATIONS: carbonaceous-argillaceous limestone; dolomite; calcareous and dolomitic siltstone; minor sandstone
	LOWER, MIDDLE AND UPPER TRIASSIC	T1	GRAYLING, TOAD AND LARD FORMATIONS: dolomitic and calcareous siltstone; silty shale; silty limestone; dolomitic and calcareous sandstone; minor silty dolomite
CARBONIFEROUS AND PERMIAN		CP	STODDART GROUP, KINDLE AND FANTASQUE FORMATIONS: shale; sandstone; siltstone; limestone; chert
CARBONIFEROUS	LOWER CARBONIFEROUS	Cp	PROPHET FORMATION: limestone; skeletal limestone; calcareous mudstone; spiculite; chert nodules in upper part
DEVONIAN AND CARBONIFEROUS	UPPER DEVONIAN AND LOWER CARBONIFEROUS	DCR	BESA RIVER FORMATION: dark grey argillite; calcareous shale; minor limestone; spiculite
DEVONIAN	MIDDLE DEVONIAN	Dd	DUNEDIN FORMATION: limestone; argillaceous limestone; massive secondary dolomite locally; calcareous shale; shale; minor quartz sandstone at base
	LOWER DEVONIAN	Ds	STONE FORMATION: silty dolomite; quartz sandstone; dolomitic sandstone
ORDOVICIAN, SILURIAN AND DEVONIAN	MIDDLE AND UPPER ORDOVICIAN, LOWER AND UPPER SILURIAN, AND LOWER DEVONIAN	OSD	SKOKI FORMATION: limestone, dolomite and shale unit; quartzite and dolomite unit; BEAVERCOT FORMATION (LOCALLY), NONDA AND MUNCHO-McCONNELL FORMATIONS: dolomite; silty, argillaceous, sandy sandy dolomite; oncoidic dolomite; limestone; quartzite; shale
ORDOVICIAN	LOWER ORDOVICIAN	OK3	Upper unit: argillaceous, silty, nodular to wavy-bedded limestone; minor calcareous argillite
		OK2	Middle unit: wavy bedded, silty limestone; minor quartz sandstone
		OK1	Lower unit: cleaved, argillaceous, silty limestone; nodular, silty limestone
CAMBRIAN	UPPER CAMBRIAN	OL2	Upper unit: calcareous argillite and argillite with limestone nodules; silty, argillaceous, nodular to wavy-bedded limestone; minor limestone
		OL1	Lower unit: dolomite; sandy to silty dolomite; minor quartz sandstone at base
	MIDDLE CAMBRIAN	CSA	SNAKE INDIAN, ELDON AND ARCTOMYS FORMATIONS: silty, sandy and argillaceous dolomite; varicoloured shale; dolomite; minor quartz sandstone
	LOWER CAMBRIAN	CGB	GOG GROUP: quartzite; dolomitic and argillaceous quartzite; shale; minor dolomite; rare pebbly conglomerate
NEOPROTEROZOIC	MISCHINKA GROUP (Pm1-Pm3)	UP	WINDERMERE SUPERGROUP: diamictite, sandstone argillite, dolomite, limestone (structure section only)
		mP3	Upper felsic unit: grey, silty argillite; quartzite; siltite
		mP2	Middle carbonate unit: limestone; dolomite; sandy limestone and dolomite; quartzite; minor argillite
		mP1	Lower felsic unit: phyllite; siltite; diamictite; feldspathic quartzite; minor carbonate
MESOPROTEROZOIC(?)		mP3	Upper felsic reflection unit (structure section only)
		mP2	Middle felsic reflection unit (structure section only)
		mP1	Lower felsic reflection unit (structure section only)



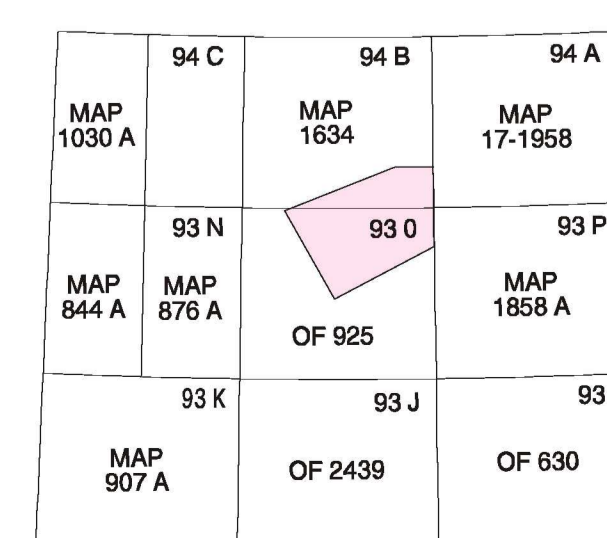
Structural Cross section scale 1:125 000

Structure section and geological map of the Foothills and Front Ranges, Carbon Creek area, northeast British Columbia

Scale 1:250 000 - Echelle 1/250 000



OPEN FILE DOSSIER PUBLIC 3553
GEOLOGICAL SURVEY OF CANADA
COMMISSION GÉOLOGIQUE DU CANADA
09/2000



Recommended citation:
McMechan, M.E.
2000: Structure section and geological map of the Foothills and Front Ranges, Carbon Creek area, northeast British Columbia. Geological Survey of Canada, Open File 3553.