

NOTES: Base of a map area (N.T.S. 1:50,000) is indicated primarily by the Upper Jurassic Bowser Lake Group. Older units are exposed in structural culminations of Devonian to Middle Jurassic...

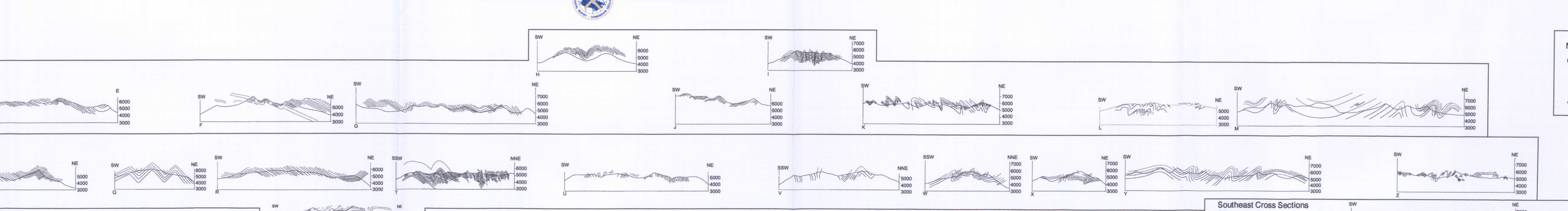
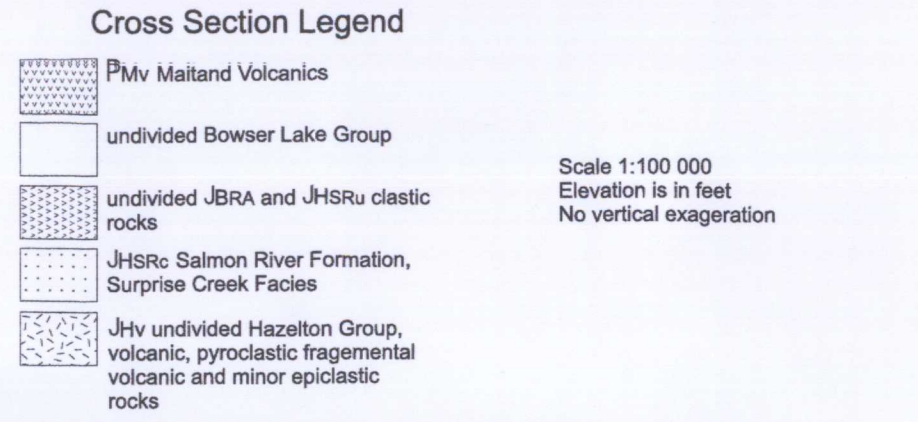
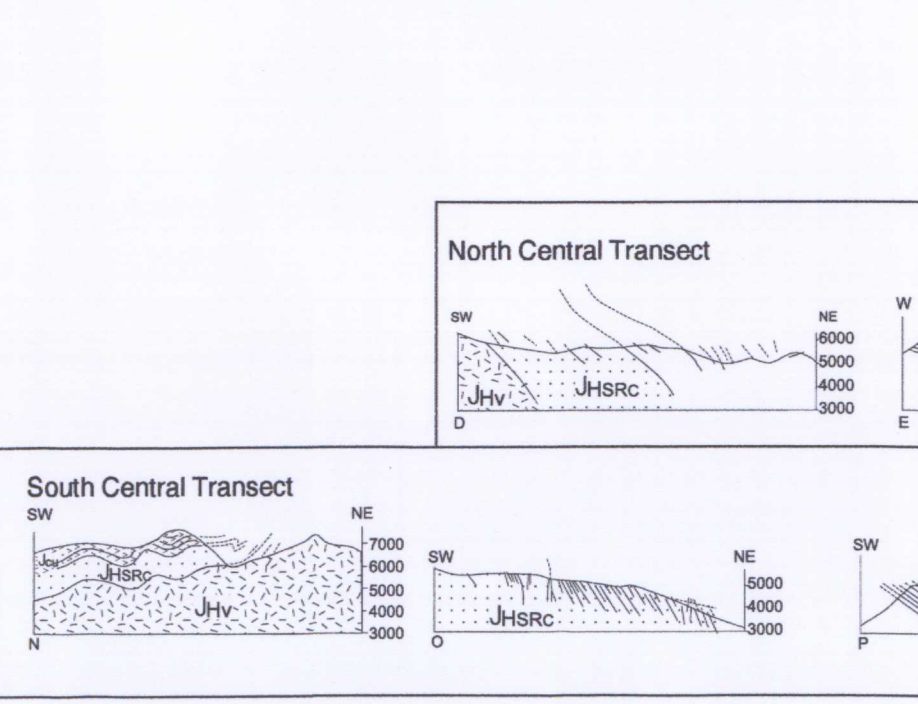


Table 1: Geologic units in the Bowser Lake area. Columns include Name, Mappable, and Remarks. Lists various units such as JKBC, JHBC, JHBA, and JHBA with their mappable status and specific remarks.

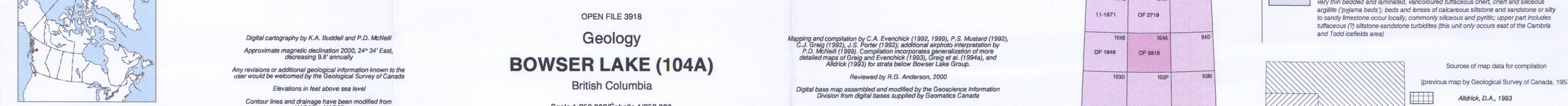
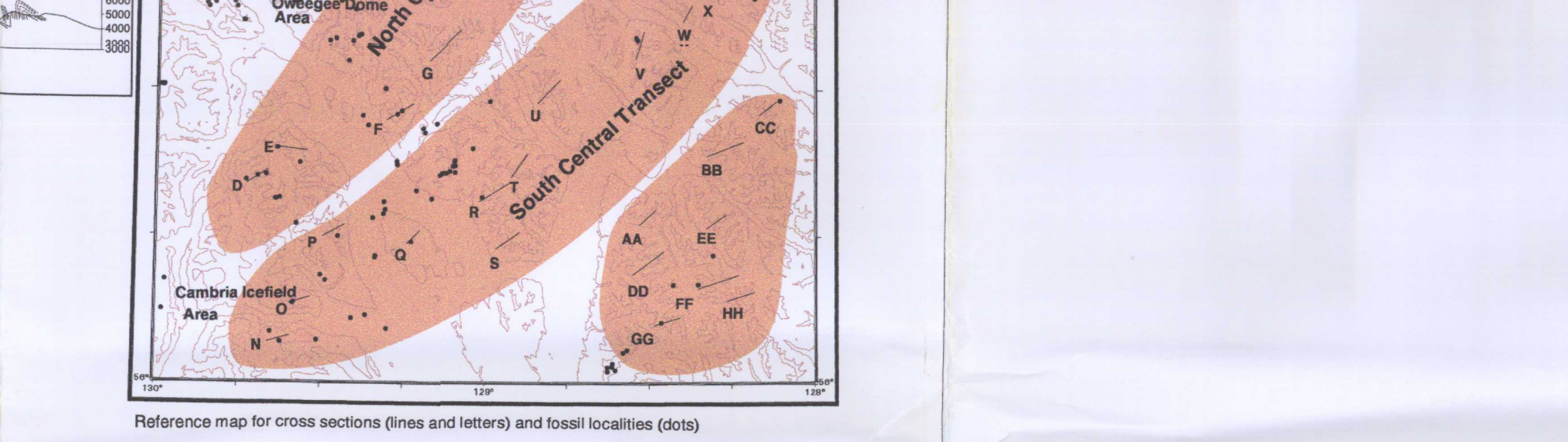
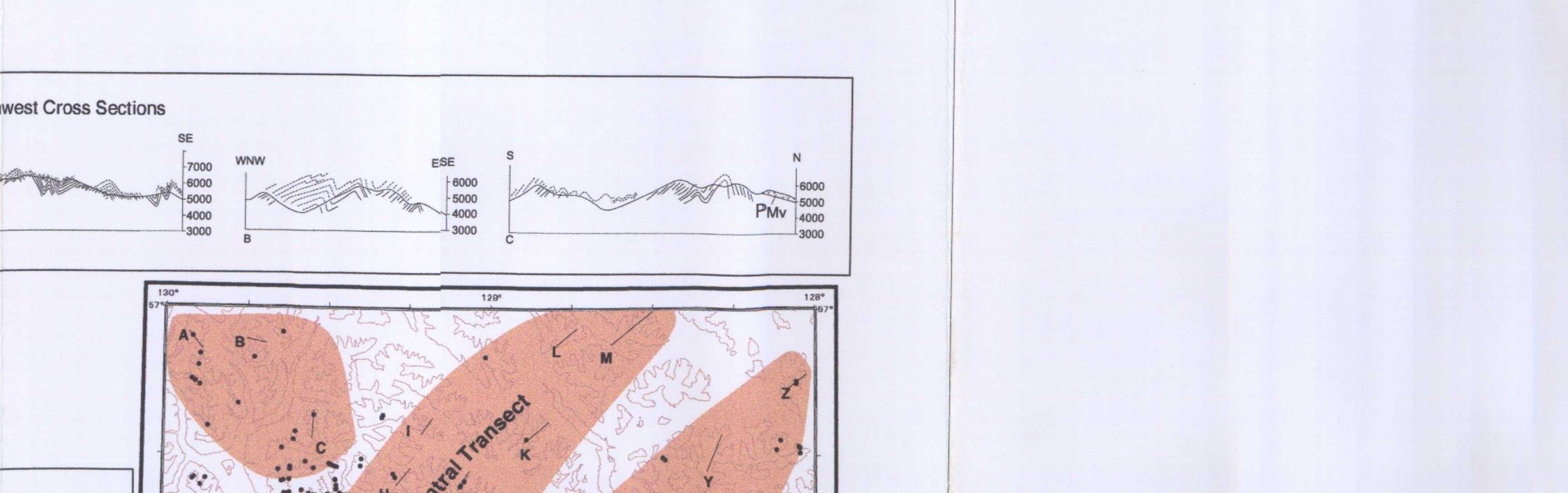
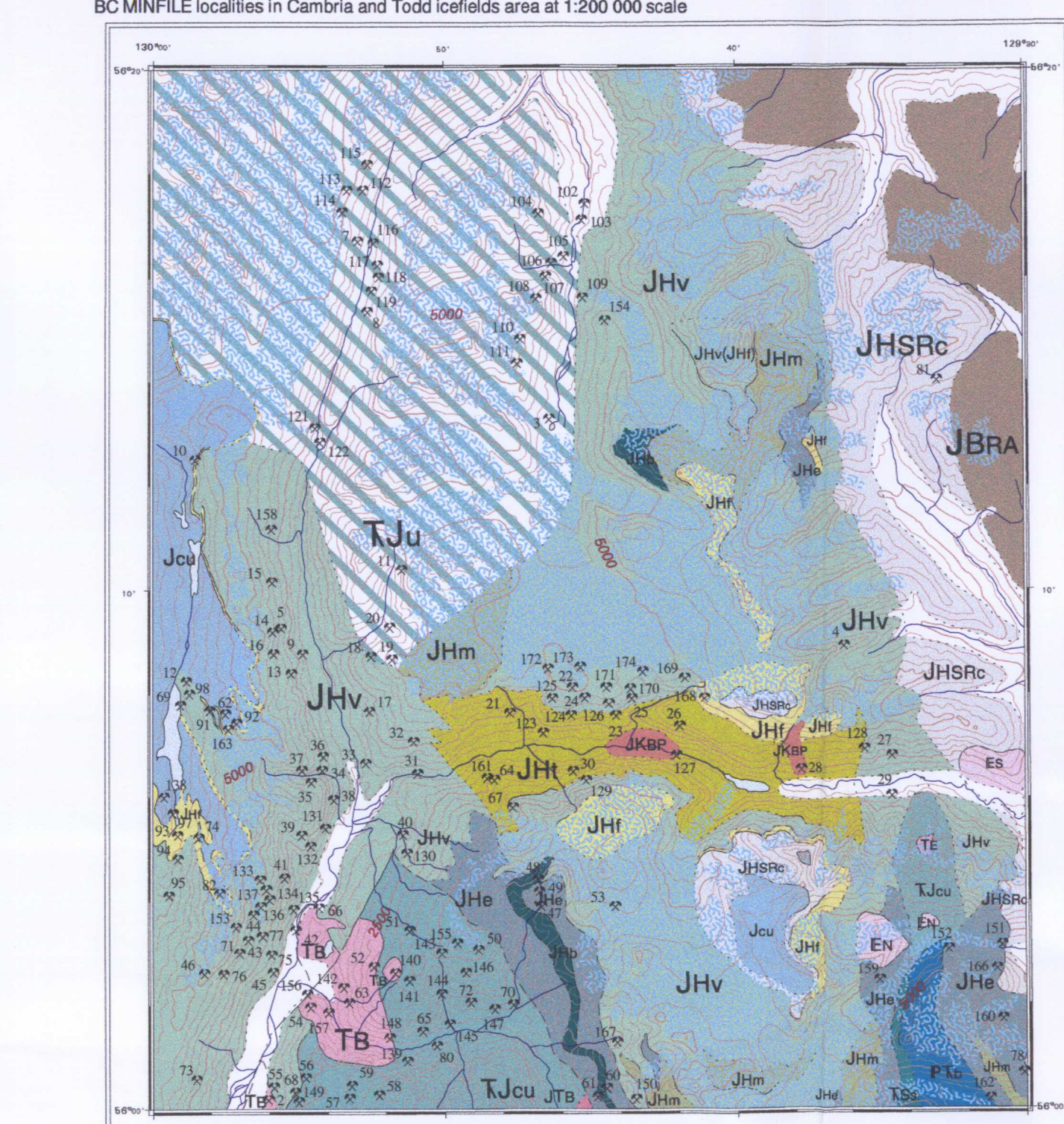


Table 2: Geologic units in the Bowser Lake area. Columns include Name, Mappable, and Remarks. Lists various units such as JKBC, JHBC, JHBA, and JHBA with their mappable status and specific remarks.



LEGEND: LOWER AND MIDDLE JURASSIC, TERTIARY, EOCENE, etc. Describes various geological units and their characteristics. Includes a detailed list of units and their descriptions.

- REFERENCES: List of bibliographic references including works by Ewenchuk, Anderson, and others. Includes titles and authors.



Map No. 10 is indicated that the location is marked on a 1:500,000 scale map. Some earlier maps have been modified to 1:500,000 scale based on aerogeological interpretation and ground observation.

Geology of the Bowser Lake (104A) area. Includes a title block with the Geological Survey of Canada logo and contact information. Also includes a note about the map's production and copyright.

Geology of the Bowser Lake (104A) area. Includes a title block with the Geological Survey of Canada logo and contact information. Also includes a note about the map's production and copyright.