

TECTONIC ASSEMBLAGES AND PLUTONIC SUITES

Tectonic assemblages represent distinctive successions of strata... defined in specific tectonic environments during particular intervals of time.

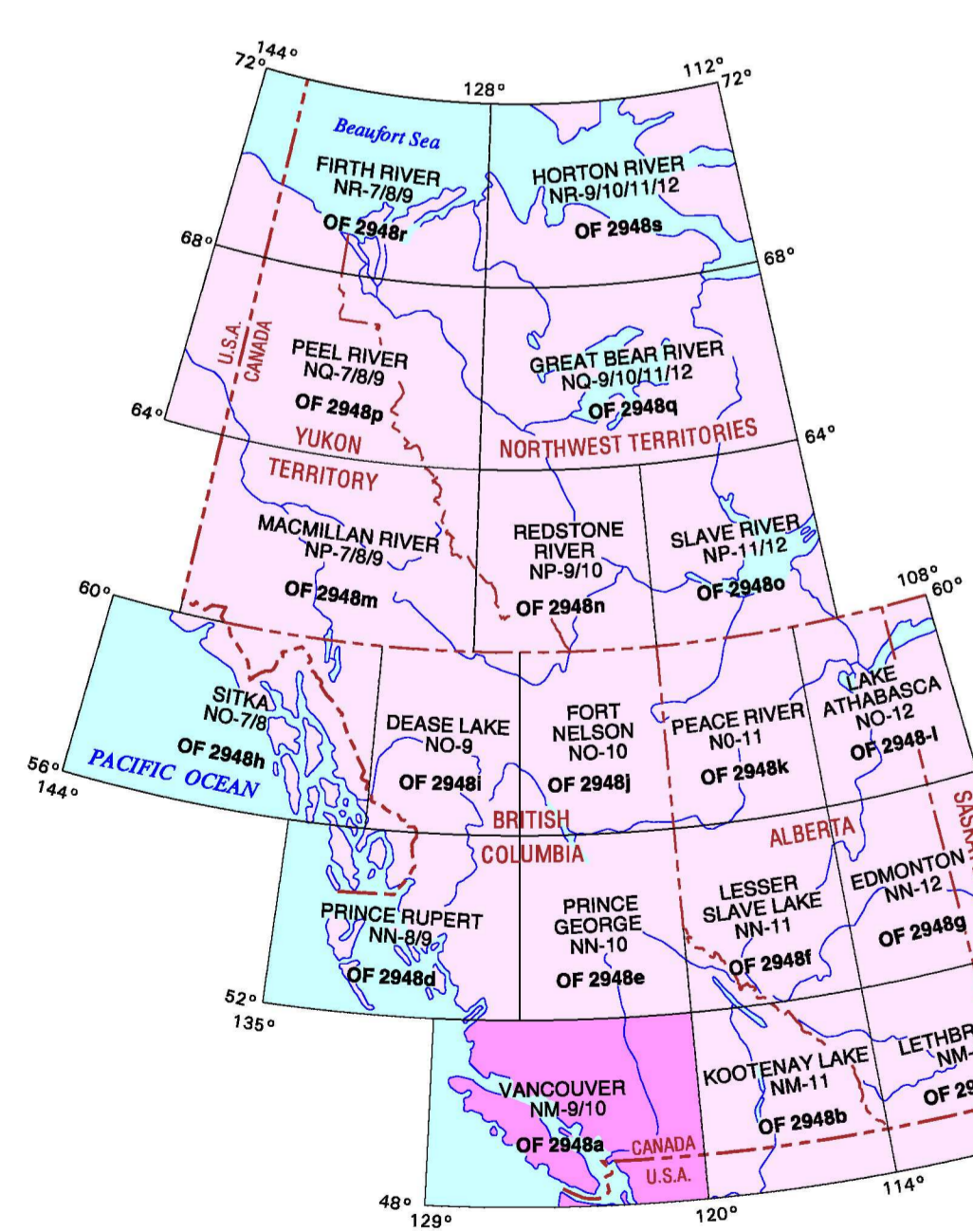
REFERENCES

Armstrong, R.L. 1985. Mesozoic - early Cenozoic plutonism in the Canadian Cordillera... Wheeler, J.C. and McFadyen, P.L. 1991. Tectonic Assemblage Map of the Canadian Cordillera...

SOURCES OF INFORMATION

Geological information contained in the GIS map library and the 1:1,000,000 scale file series is derived directly from John Wheeler's Tectonic Assemblage Map of the Canadian Cordillera...

CORDILLERAN TECTONIC ASSEMBLAGE MAP LIBRARY



TECTONIC ASSEMBLAGES OF THE VANCOUVER MAP AREA

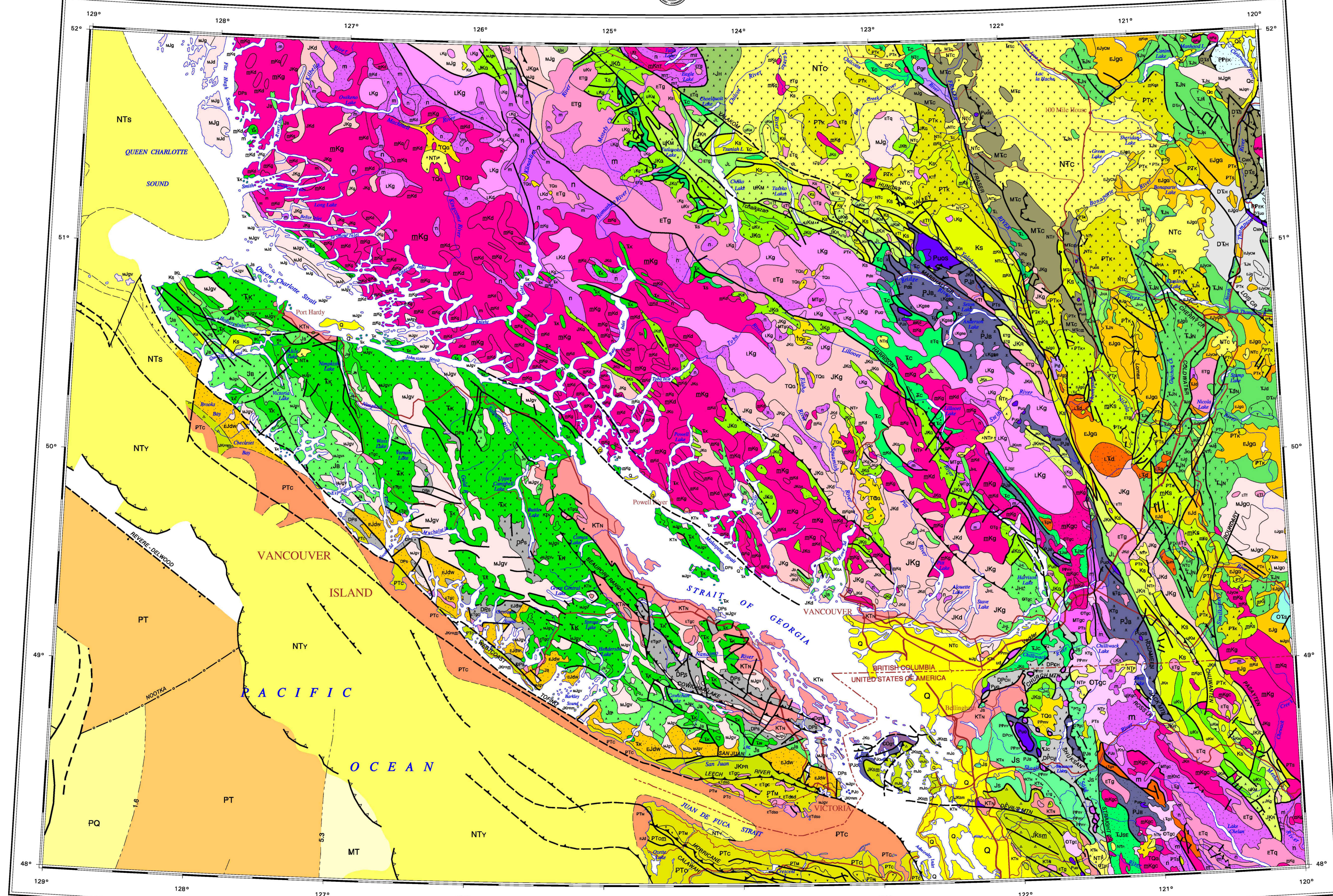


Table of Tectonic Assemblages and Plutonic Suites with codes (e.g., JHL, JS, JG) and descriptions of their geological compositions and locations.

Table of Metamorphic Rocks and Oceanic Crust with codes (e.g., m, n, PQ, PT, MT, LK, MK) and descriptions of their characteristics and typical rock types.

Table of Symbols and Geographical Features with symbols (e.g., dashed lines, dots) and descriptions of their meanings on the map.