

FIGURE 1. Index map and surficial geology map (right, adapted from map sheet Surficial Geology and Physical Properties 5, this volume) showing locations of boreholes and cross-sections I-I' and J-J'.

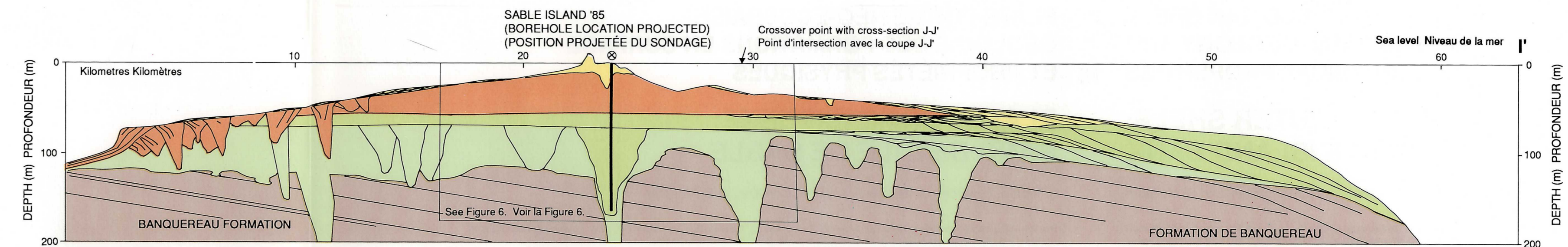


FIGURE 2. Cross-section I-I', as indicated on Figure 1
FIGURE 2. Coupe transversale I-I' telle qu'indiquée sur la figure 1

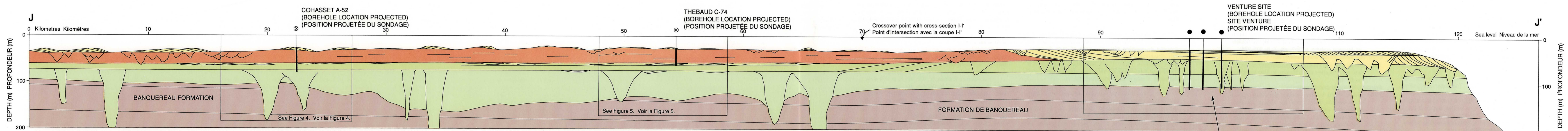


FIGURE 3. Cross-section J-J', as indicated on Figure 1
FIGURE 3. Coupe transversale J-J' telle qu'indiquée sur la figure 1

Detailed section shown on map sheet Surficial Geology and Physical Properties 16
Coupe détaillée illustrée sur la carte Géologie des formations en surface et propriétés physiques 16

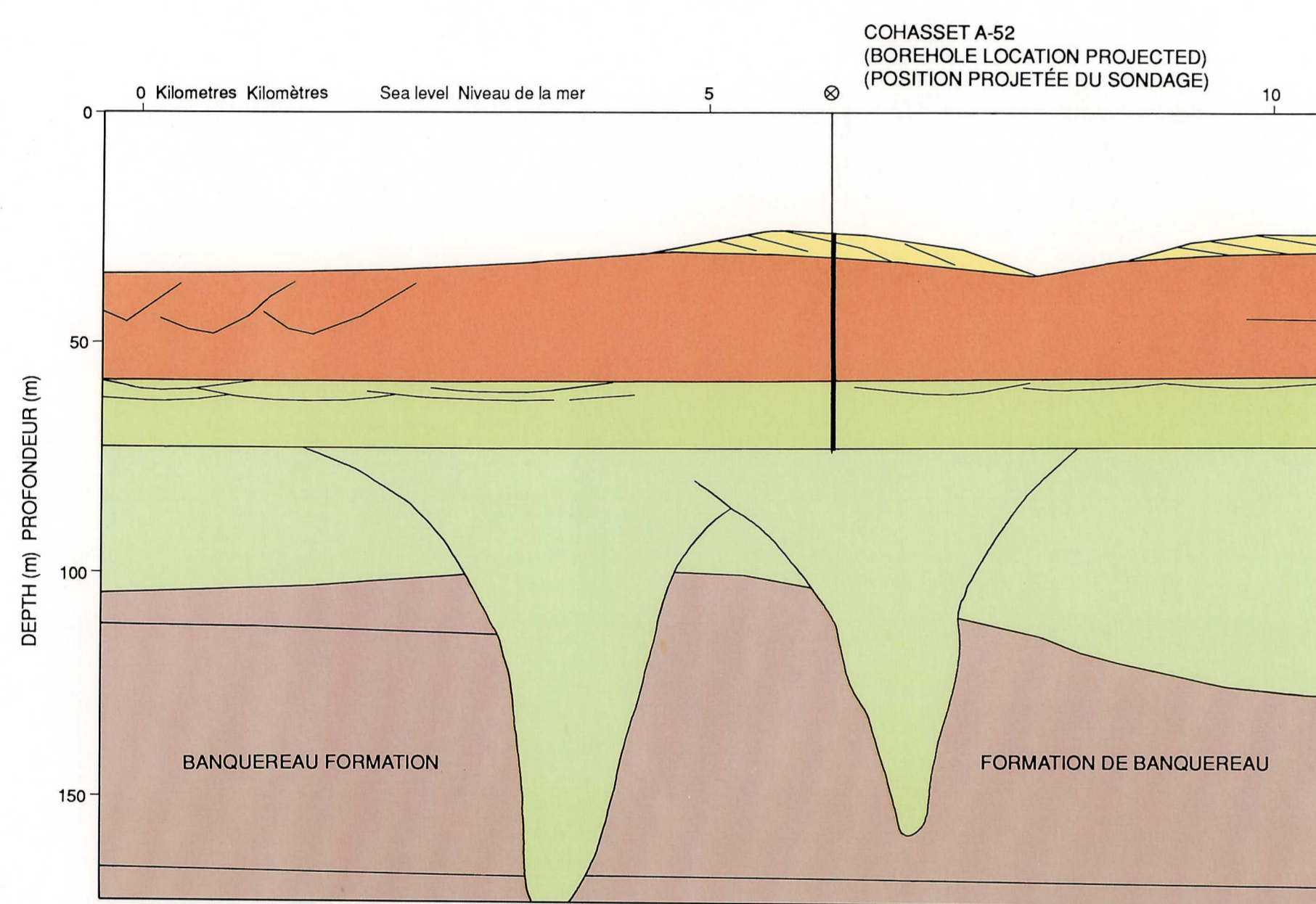


FIGURE 4. Detailed section of cross-section J-J' : Cohasset A-52 site
FIGURE 4. Détail de la coupe transversale J-J' : site de Cohasset A-52

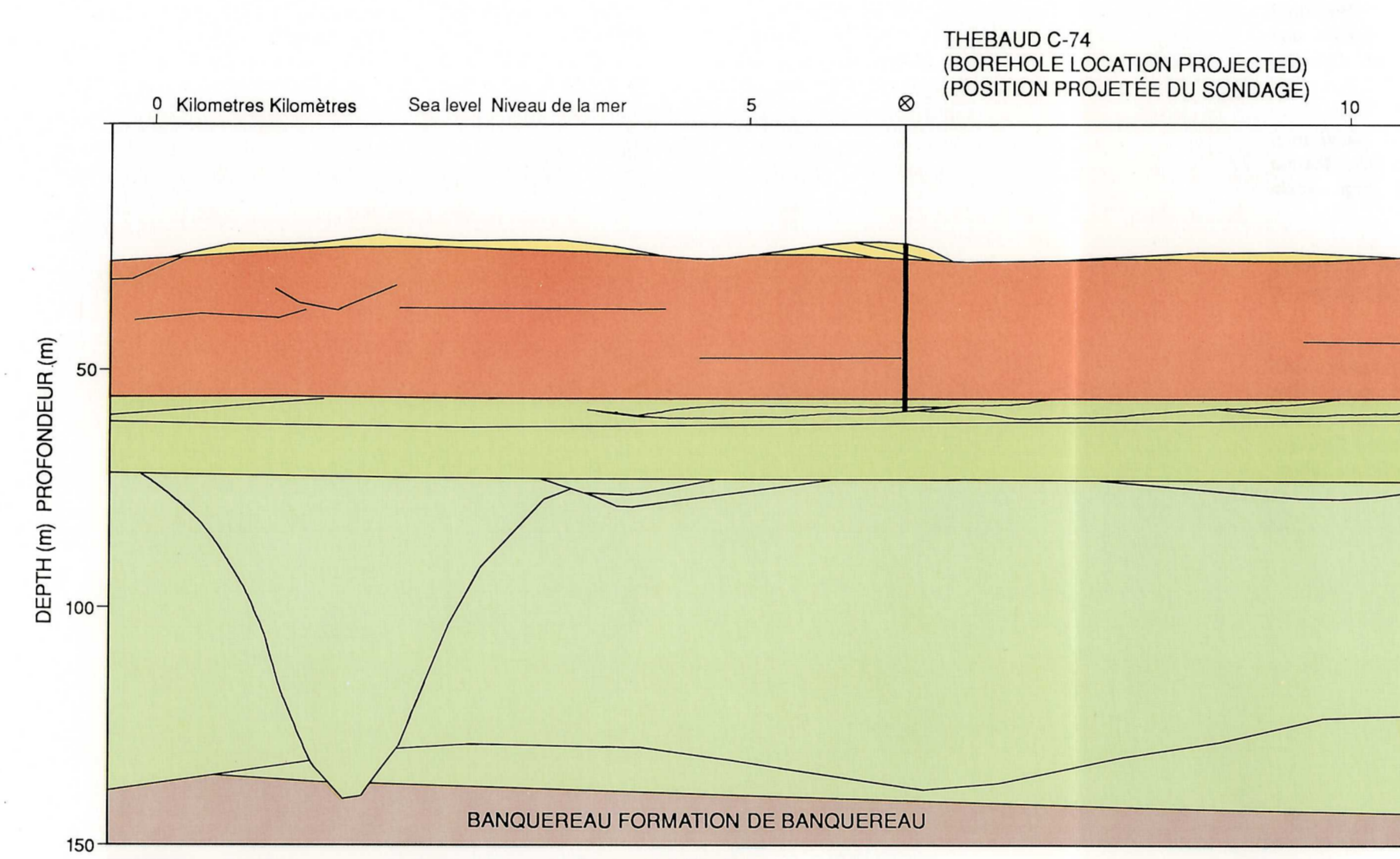


FIGURE 5. Detailed section of cross-section J-J' : Thebaud C-74 site
FIGURE 5. Détail de la coupe transversale J-J' : site de Thebaud C-74

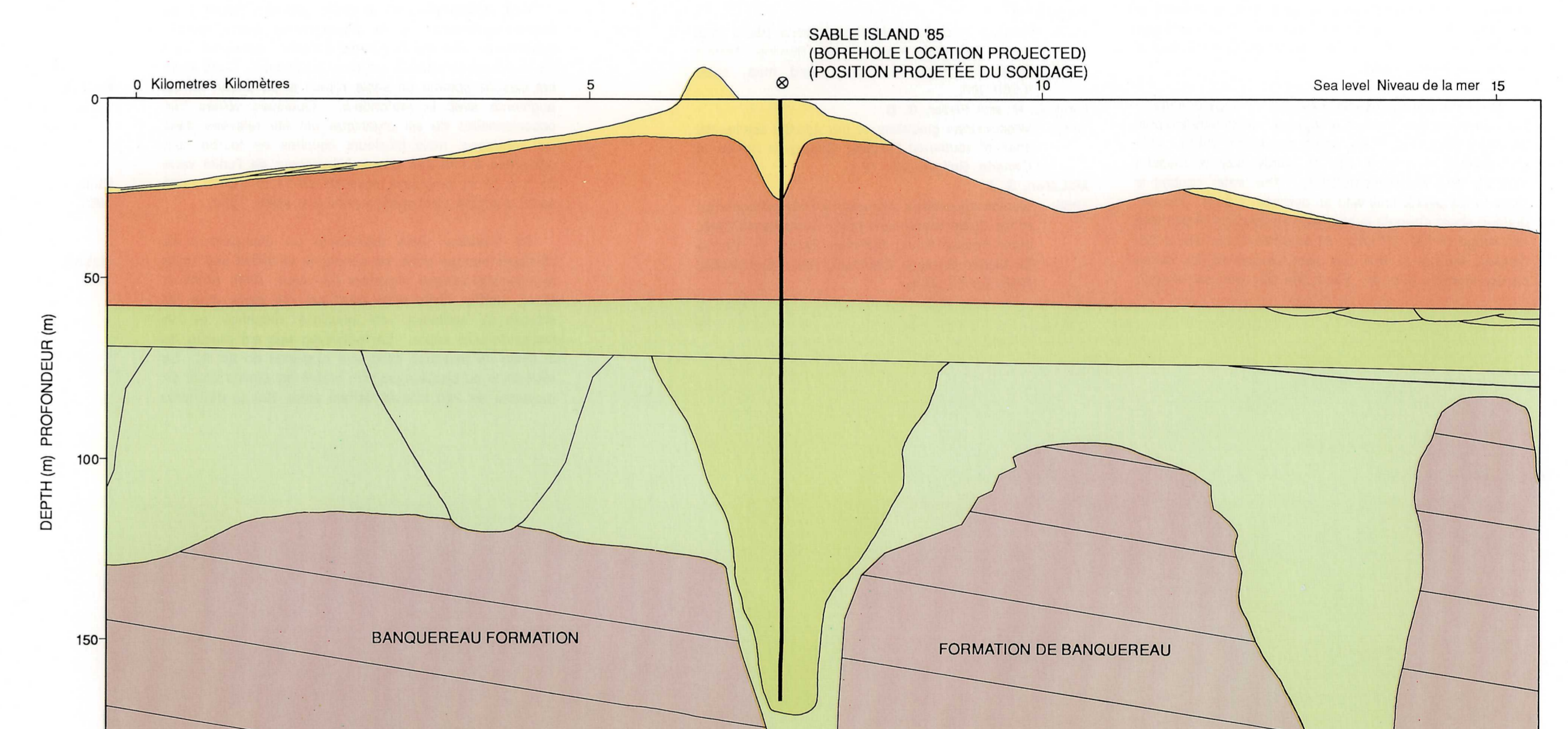


FIGURE 6. Detailed section of cross-section I-I' : Sable Island '85 site
FIGURE 6. Détail de la coupe transversale I-I' : site de Sable Island '85

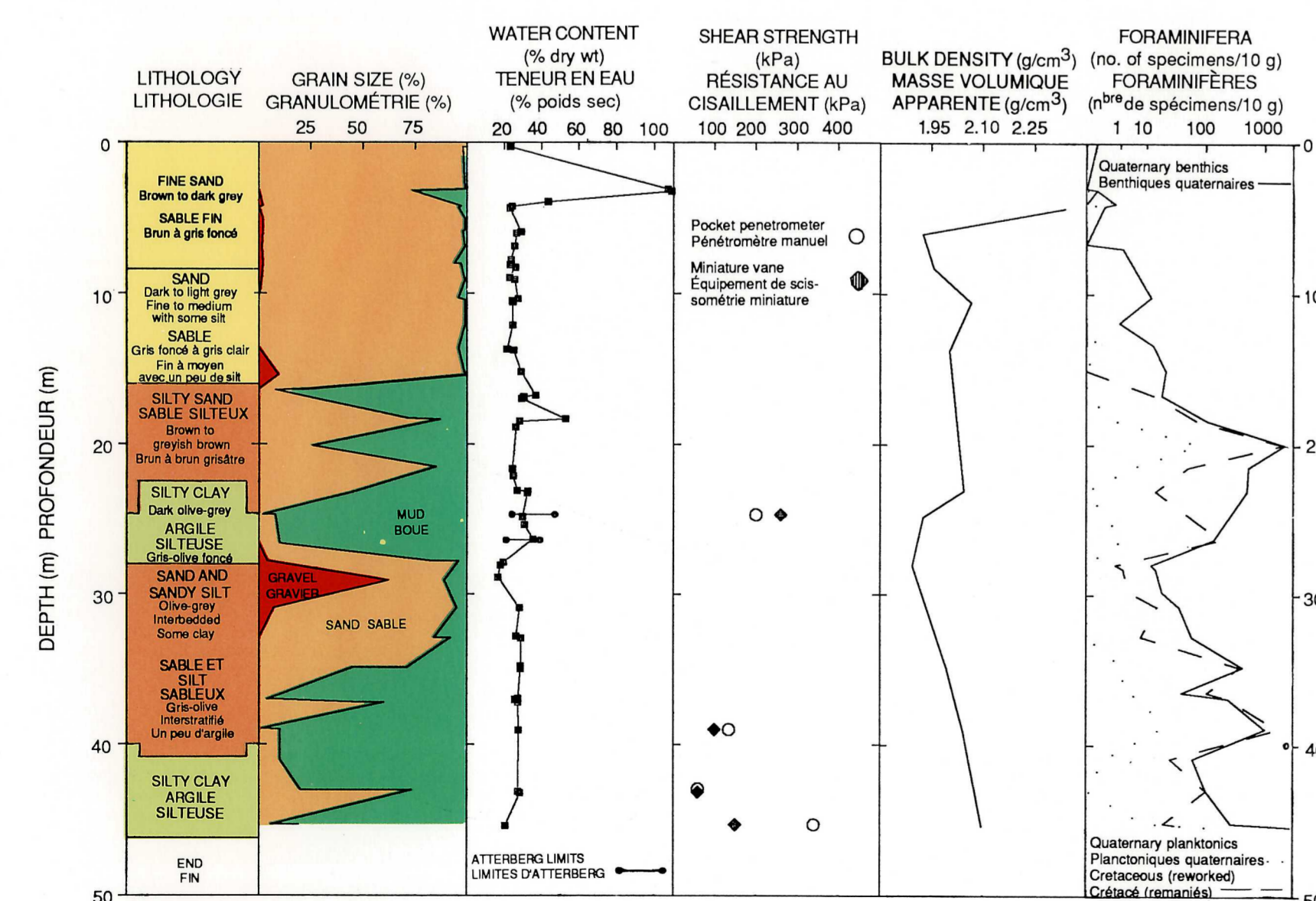


FIGURE 7. Physical properties of borehole 1-2, Cohasset A-52 site
FIGURE 7. Propriétés physiques du sondage 1-2, site de Cohasset A-52

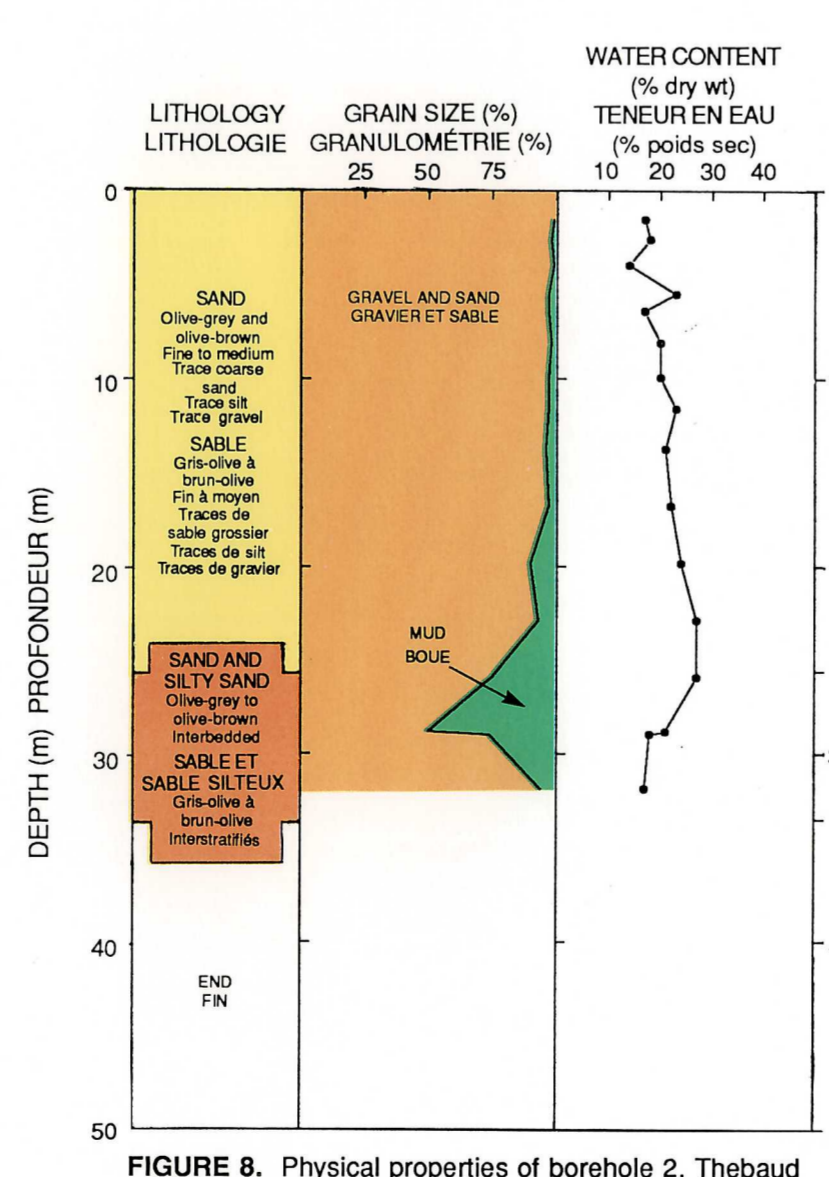


FIGURE 8. Physical properties of borehole 2, Thebaud C-74 site
FIGURE 8. Propriétés physiques du sondage 2, site de Thebaud C-74

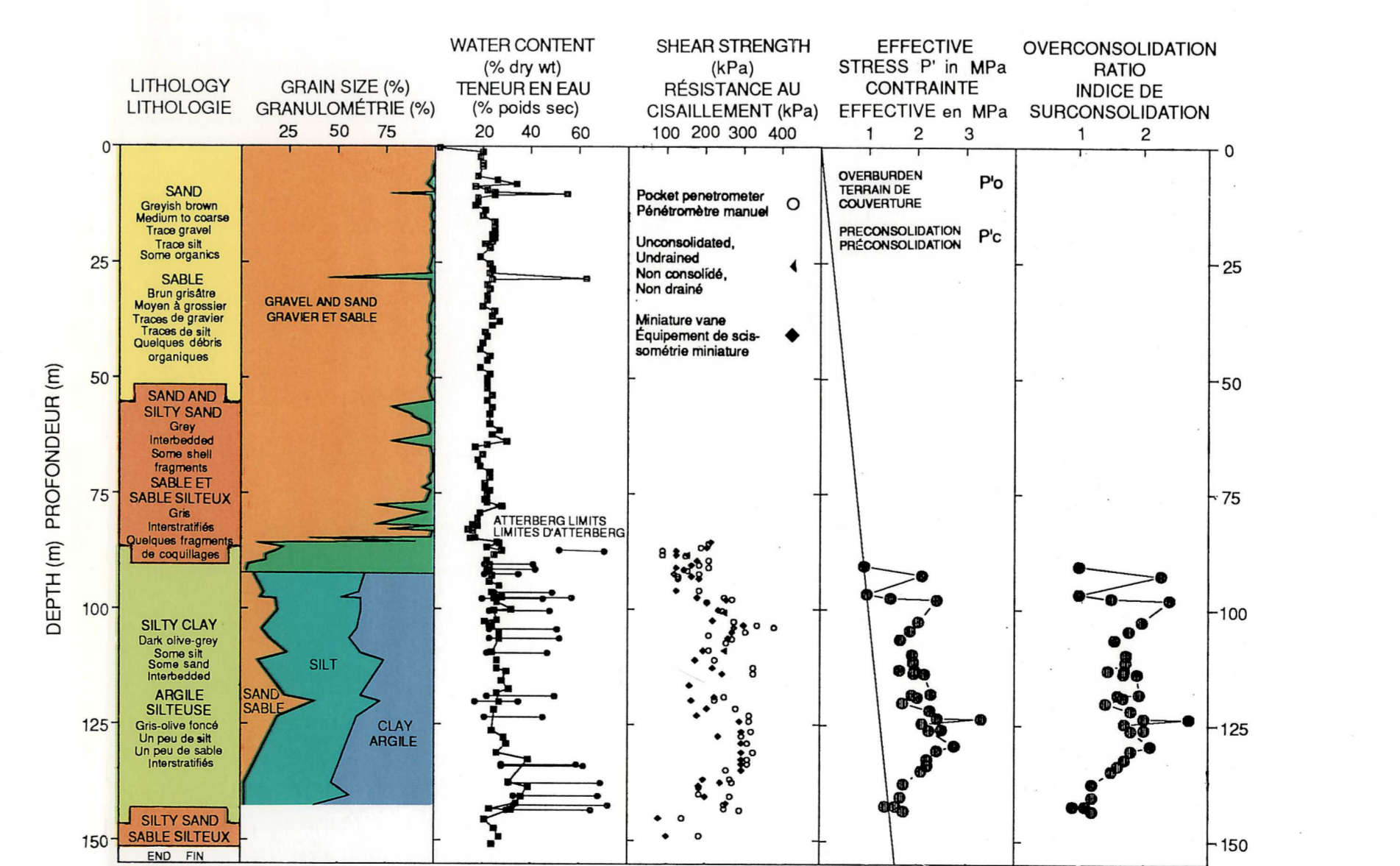
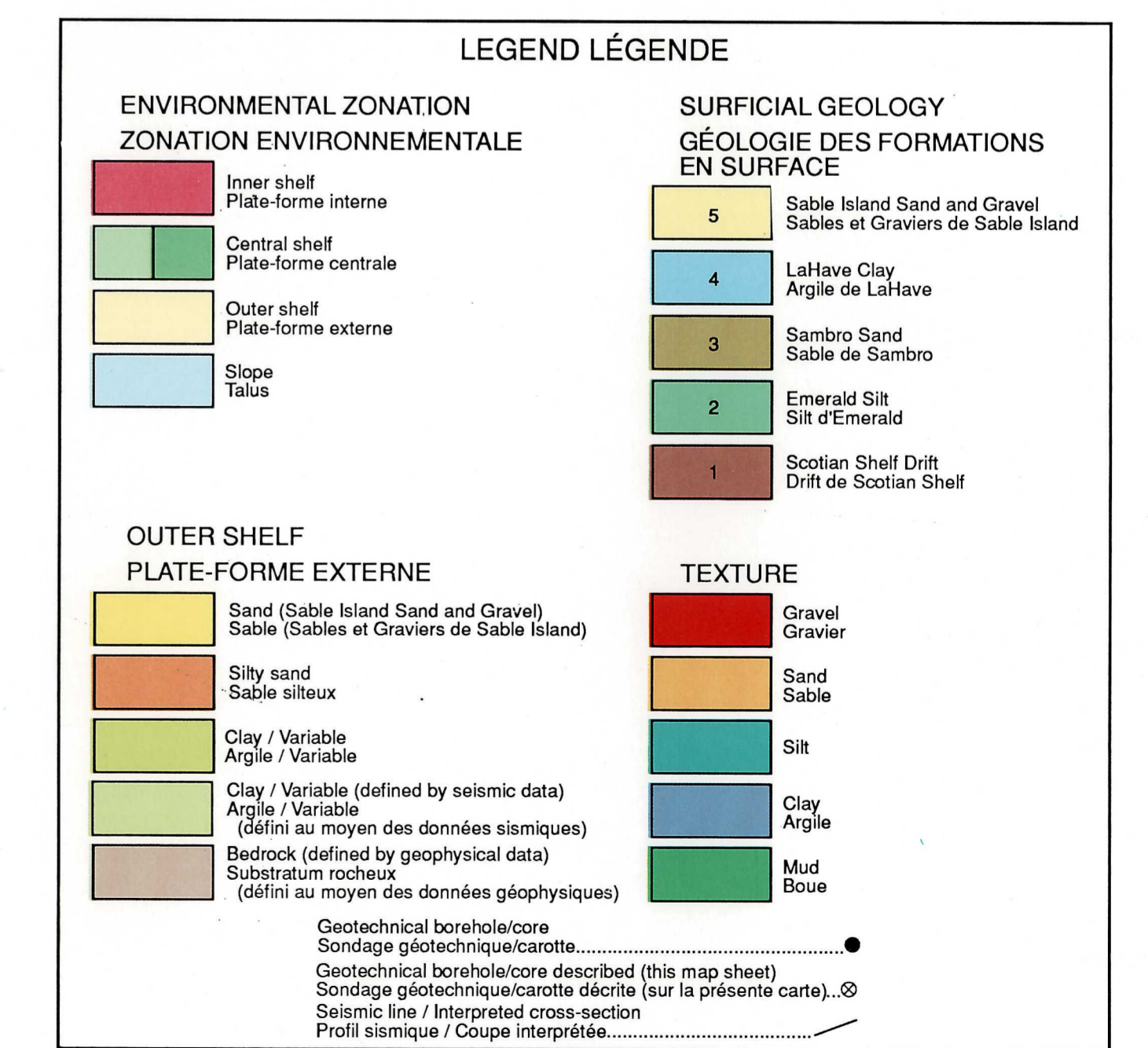


FIGURE 9. Physical properties of core, borehole at Sable Island '85 site
FIGURE 9. Propriétés physiques de la carotte, sondage au site de Sable Island '85



SCOTIAN SHELF SURFICIAL GEOLOGY AND PHYSICAL PROPERTIES
15
OUTER SHELF: SABLE ISLAND BANK

PLATE-FORME NÉO-ÉCOSSAISE GÉOLOGIE DES FORMATIONS EN SURFACE ET PROPRIÉTÉS PHYSIQUES
15
PLATE-FORME EXTERNE: BANC DE L' ÎLE DE SABLE