

FIGURE 1. Generalized stratigraphy indicating Wyandot Formation and Dawson Canyon Formation (modified from Wade and MacLean, 1990)
 FIGURE 1. Stratigraphie généralisée indiquant les formations de Wyandot et de Dawson Canyon (modifiée de Wade et MacLean, 1990)

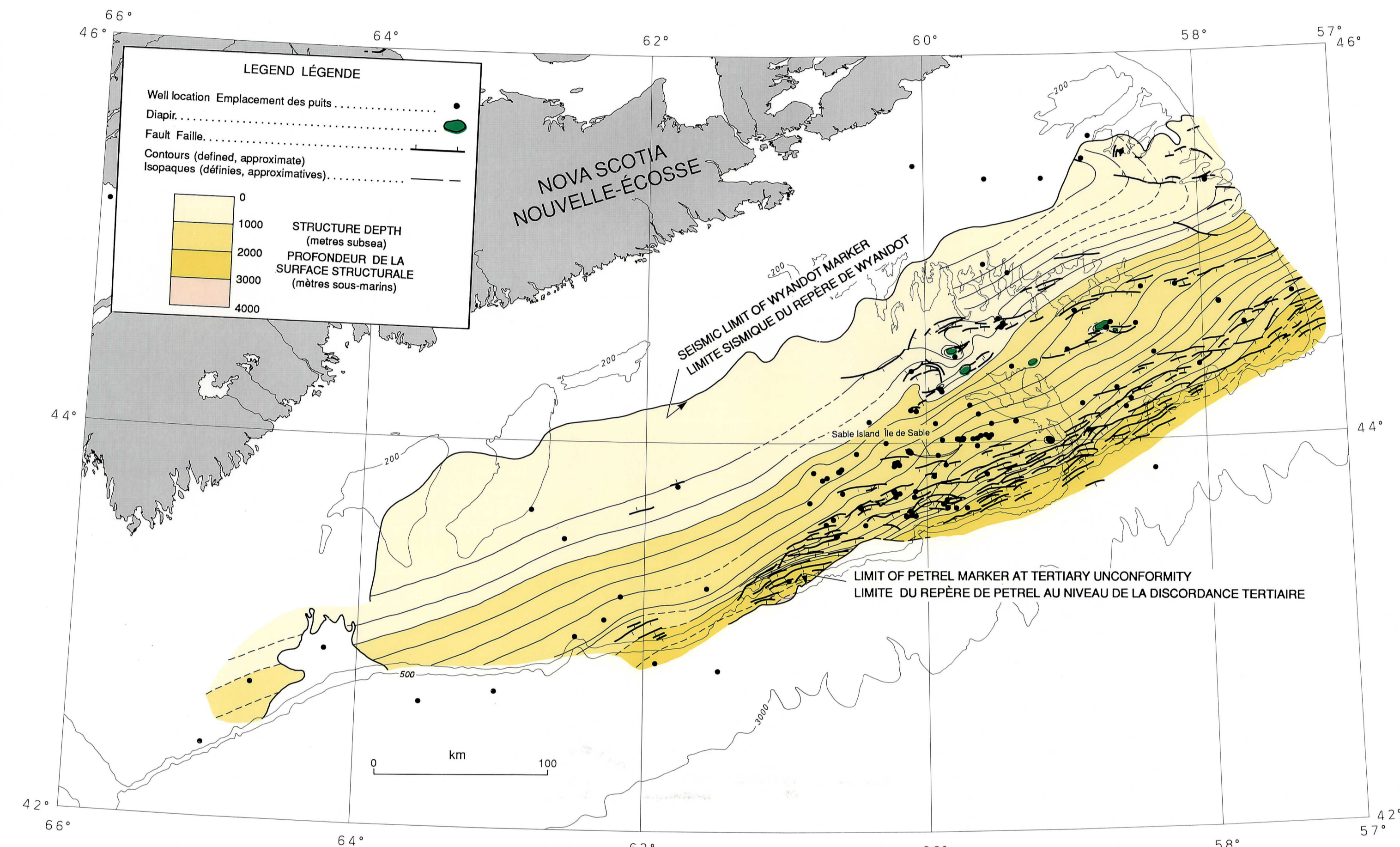


FIGURE 2. Structure depth map, Petrel Member, Dawson Canyon Formation
 FIGURE 2. Carte isobathe de la surface structurale du Membre de Petrel, Formation de Dawson Canyon

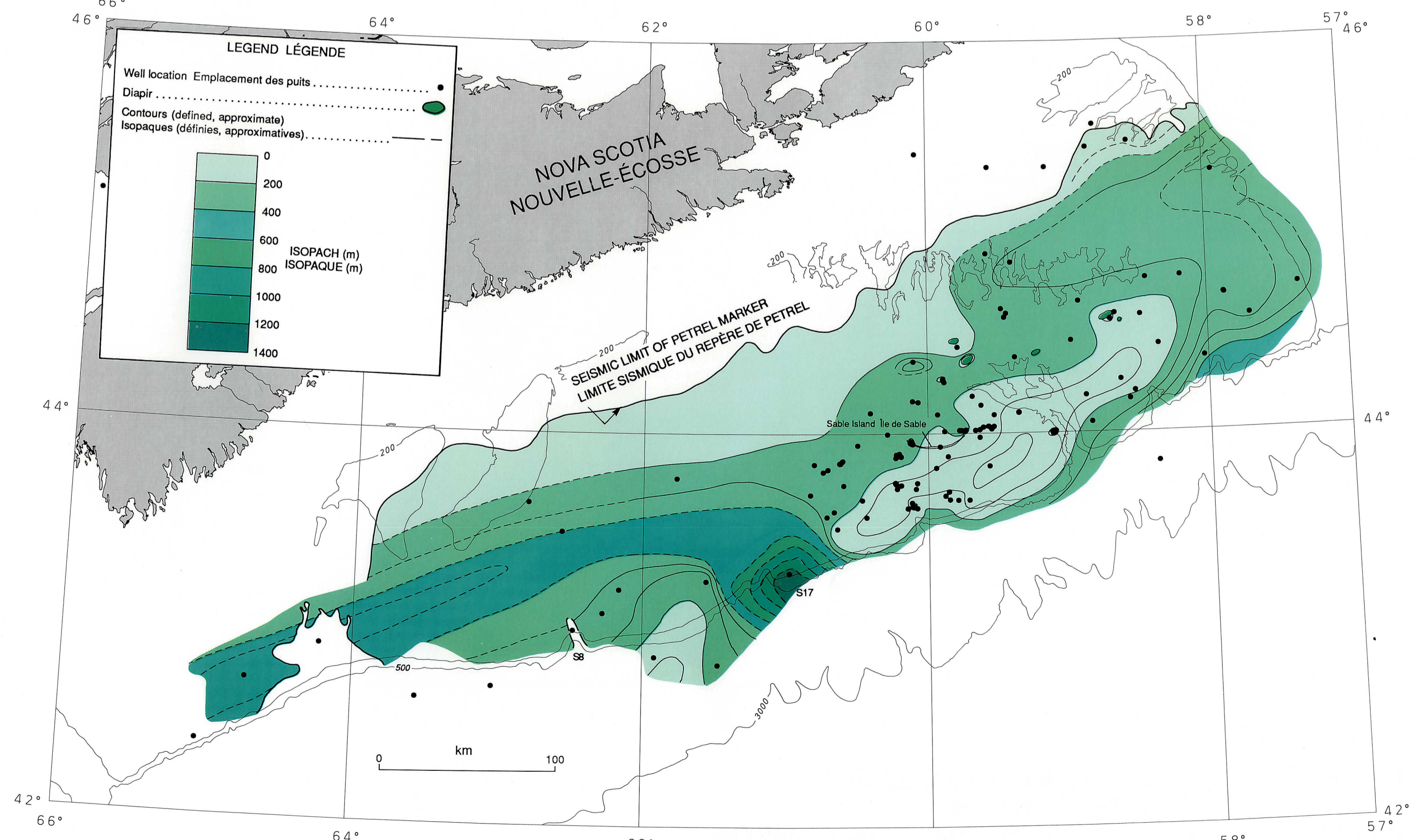


FIGURE 3. Isopach map, Dawson Canyon Formation
 FIGURE 3. Carte isopaque de la Formation de Dawson Canyon

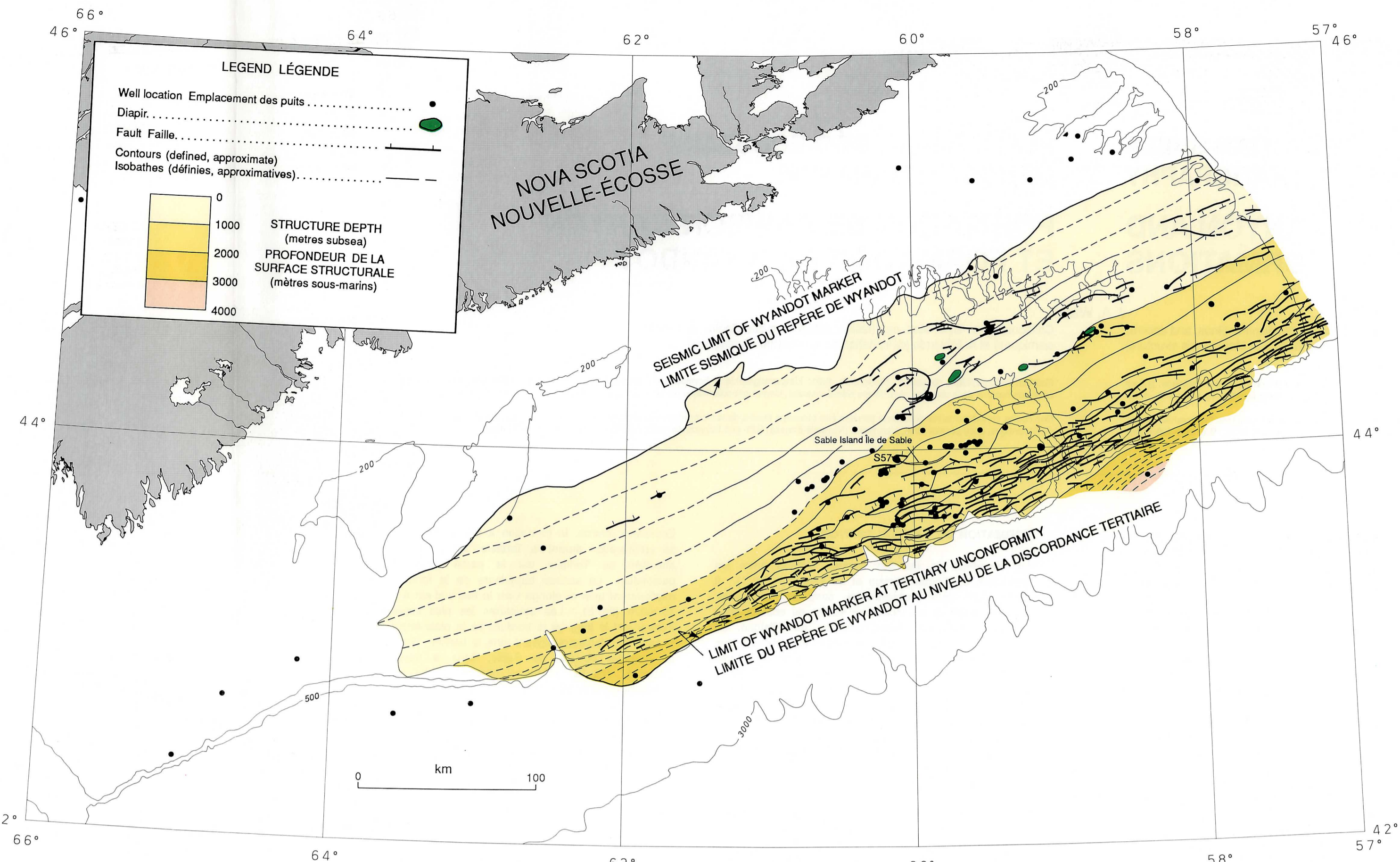


FIGURE 5. Structure depth map, Wyandot Formation
 FIGURE 5. Carte isobathe de la surface structurale de la Formation de Wyandot

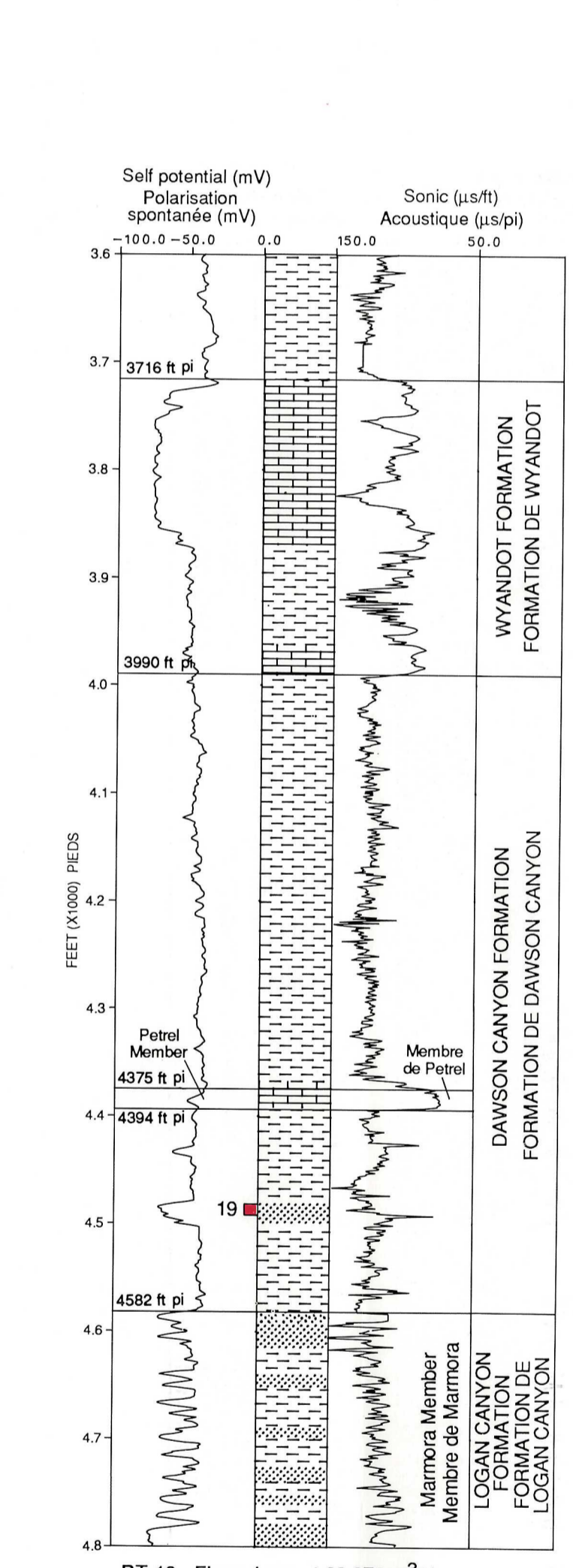


FIGURE 4. Mechanical log, Sable Island E-48 (S57)
 FIGURE 4. Diagrammes mécaniques, Sable Island E-48 (S57)

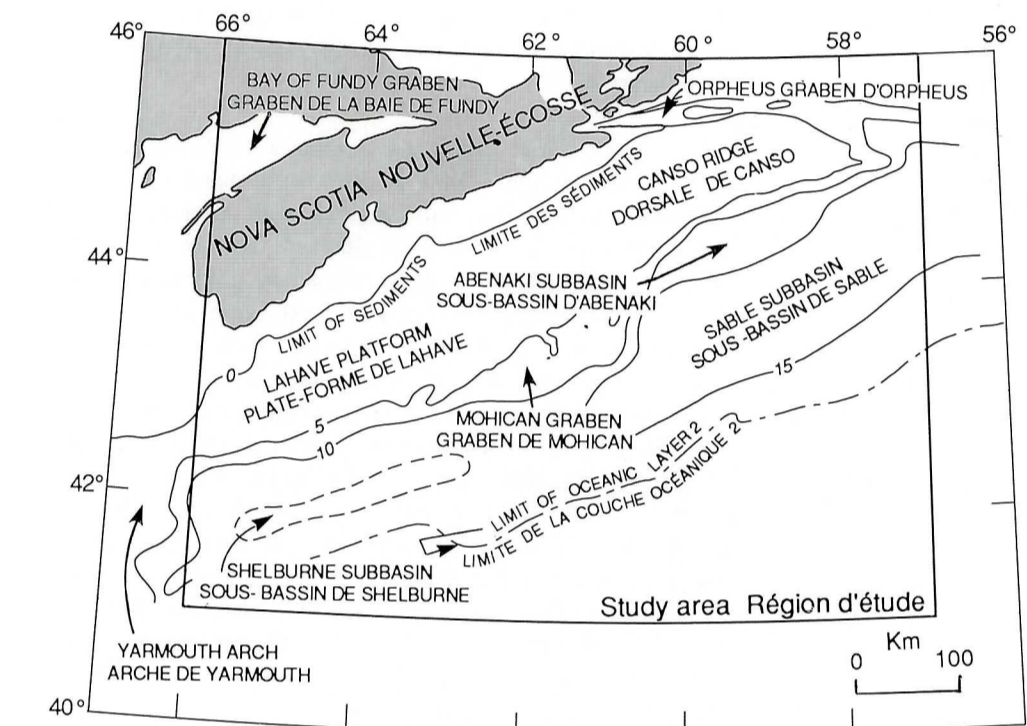


FIGURE 6. Index to main tectonic elements (5 km contour interval)
 FIGURE 6. Principaux éléments tectoniques (équidistance de 5 km)

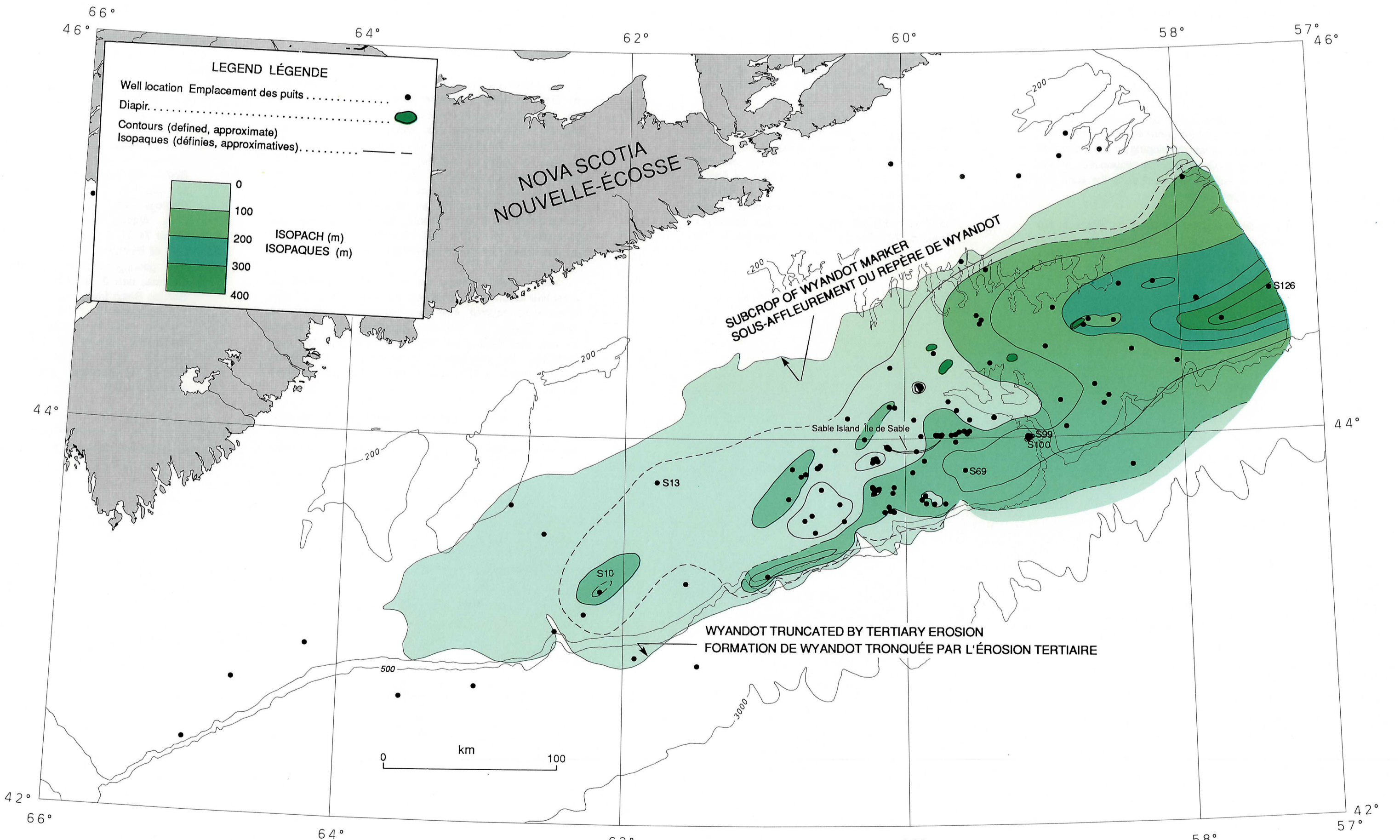


FIGURE 7. Isopach map, Wyandot Formation
 FIGURE 7. Carte isopaque de la Formation de Wyandot

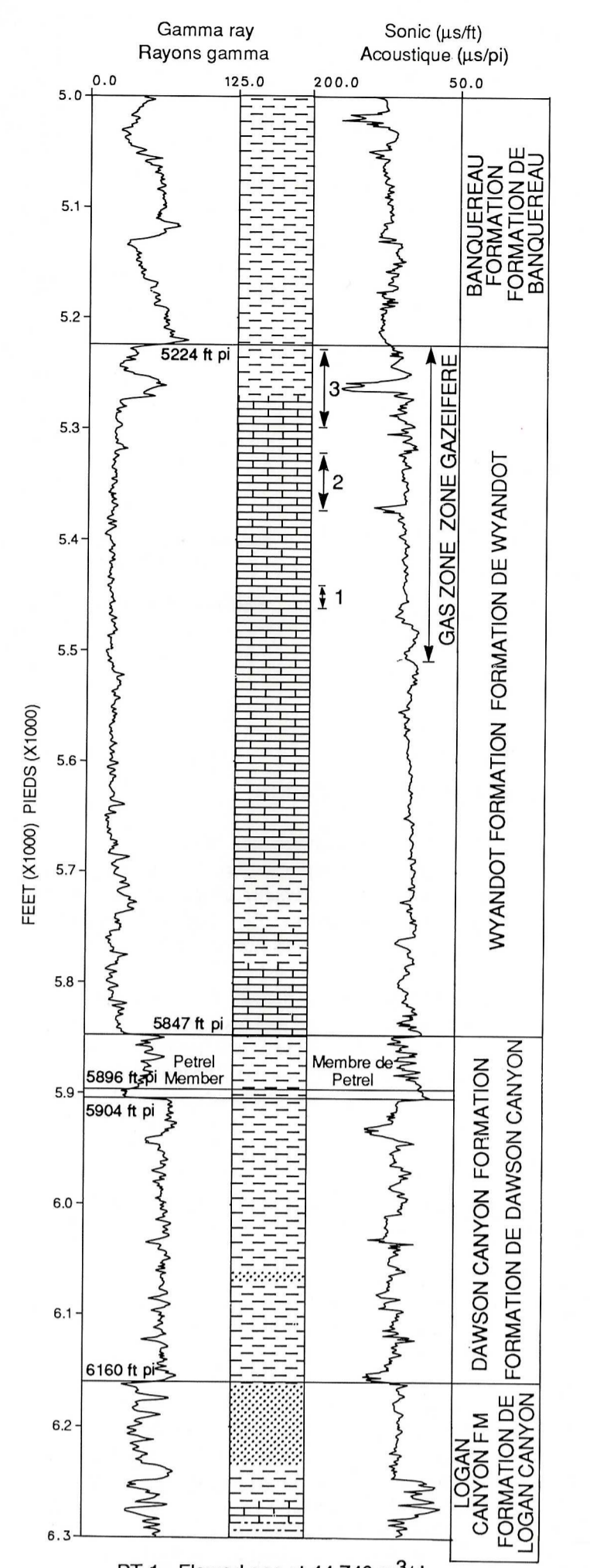


FIGURE 8. Mechanical log, Eagle D-21 (S69); see Figure 4 for legend
 FIGURE 8. Diagrammes mécaniques, Eagle D-21 (S69); voir la légende de la figure 4

SCOTIAN SHELF LITHOSTRATIGRAPHY AND DAWSON CANYON AND WYANDOT FORMATIONS / PLATE-FORME NÉO-ÉCOSSAISE LITHOSTRATIGRAPHIE FORMATION DE DAWSON CANYON ET FORMATION DE WYANDOT

This map has been produced from a scanned version of the original map / Reproduction par numérisation d'une carte sur papier