

FIGURE 1. East Coast magnetic anomaly (175 Ma)
FIGURE 1. Anomalie magnétique de la côte Est (175 Ma)

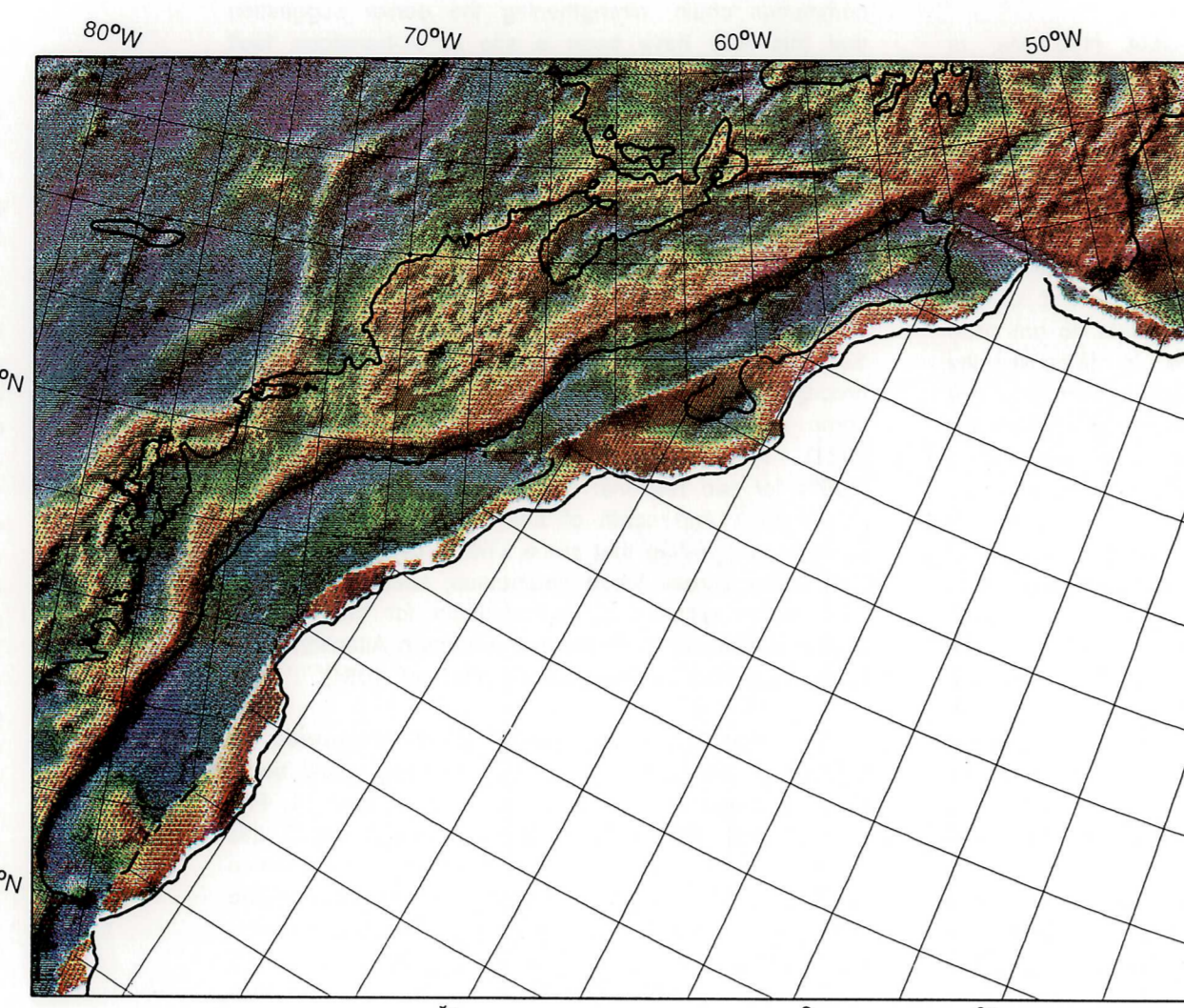


FIGURE 2. Blake Spur magnetic anomaly (170 Ma)
FIGURE 2. Anomalie magnétique de l'éperon Blake (170 Ma)

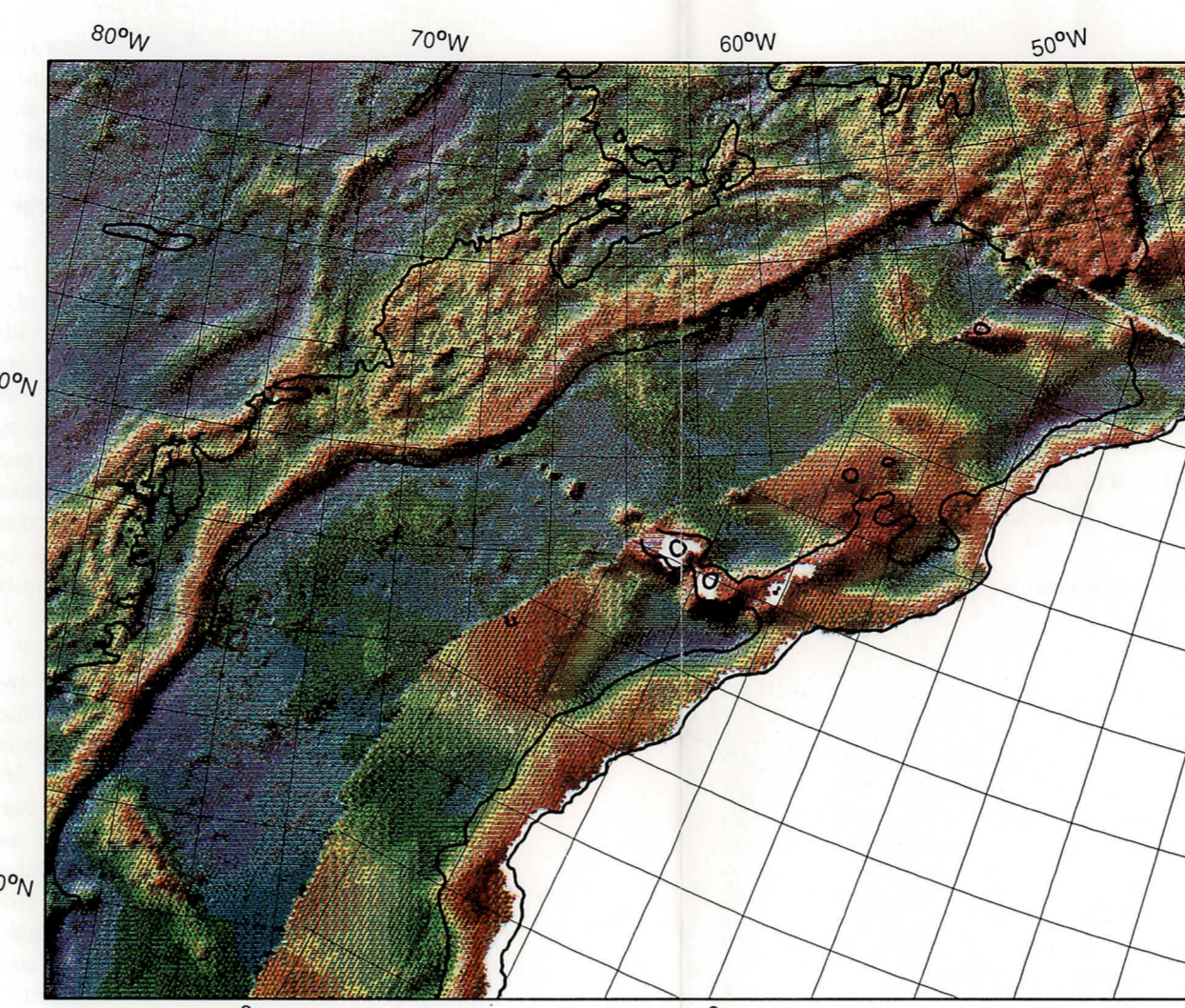


FIGURE 3. Anomaly M25 (156.5 Ma)
FIGURE 3. Anomalie M25 (156,5 Ma)

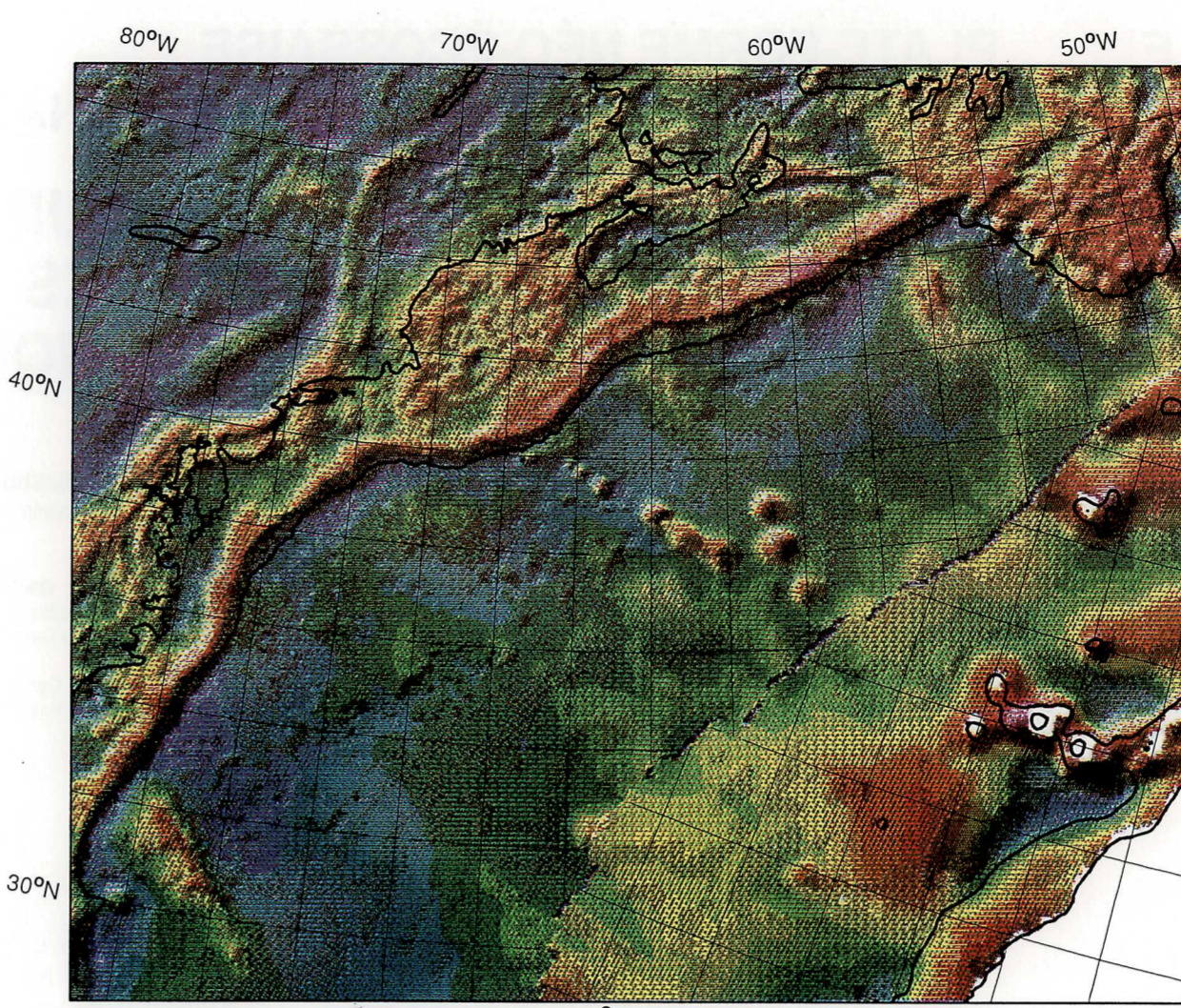


FIGURE 4. Anomaly M0 (118 Ma)
FIGURE 4. Anomalie M0 (118 Ma)

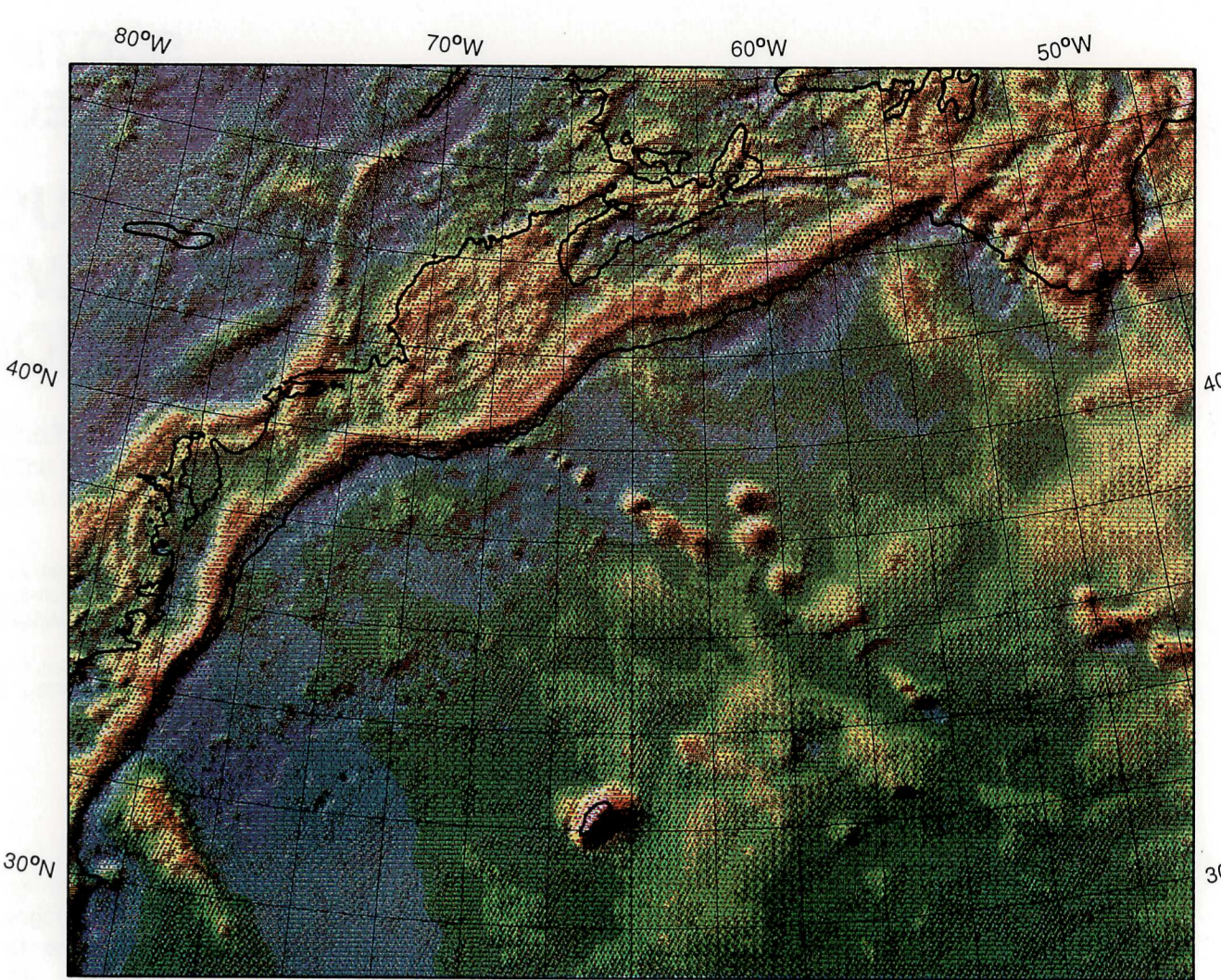


FIGURE 5. Present
FIGURE 5. Époque actuelle

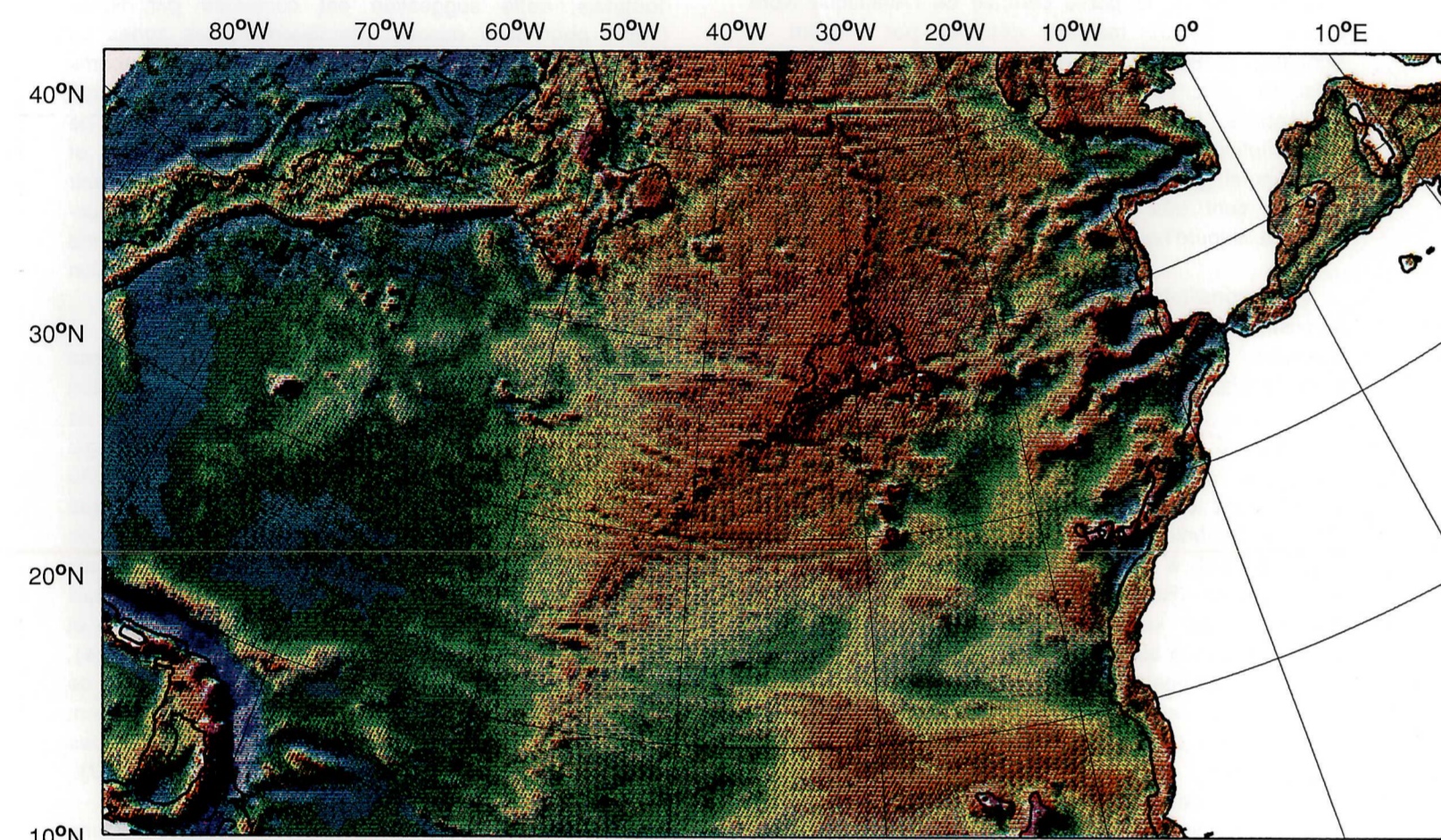


FIGURE 6. Gravity data used in reconstructions
FIGURE 6. Données gravimétriques utilisées pour les reconstitutions

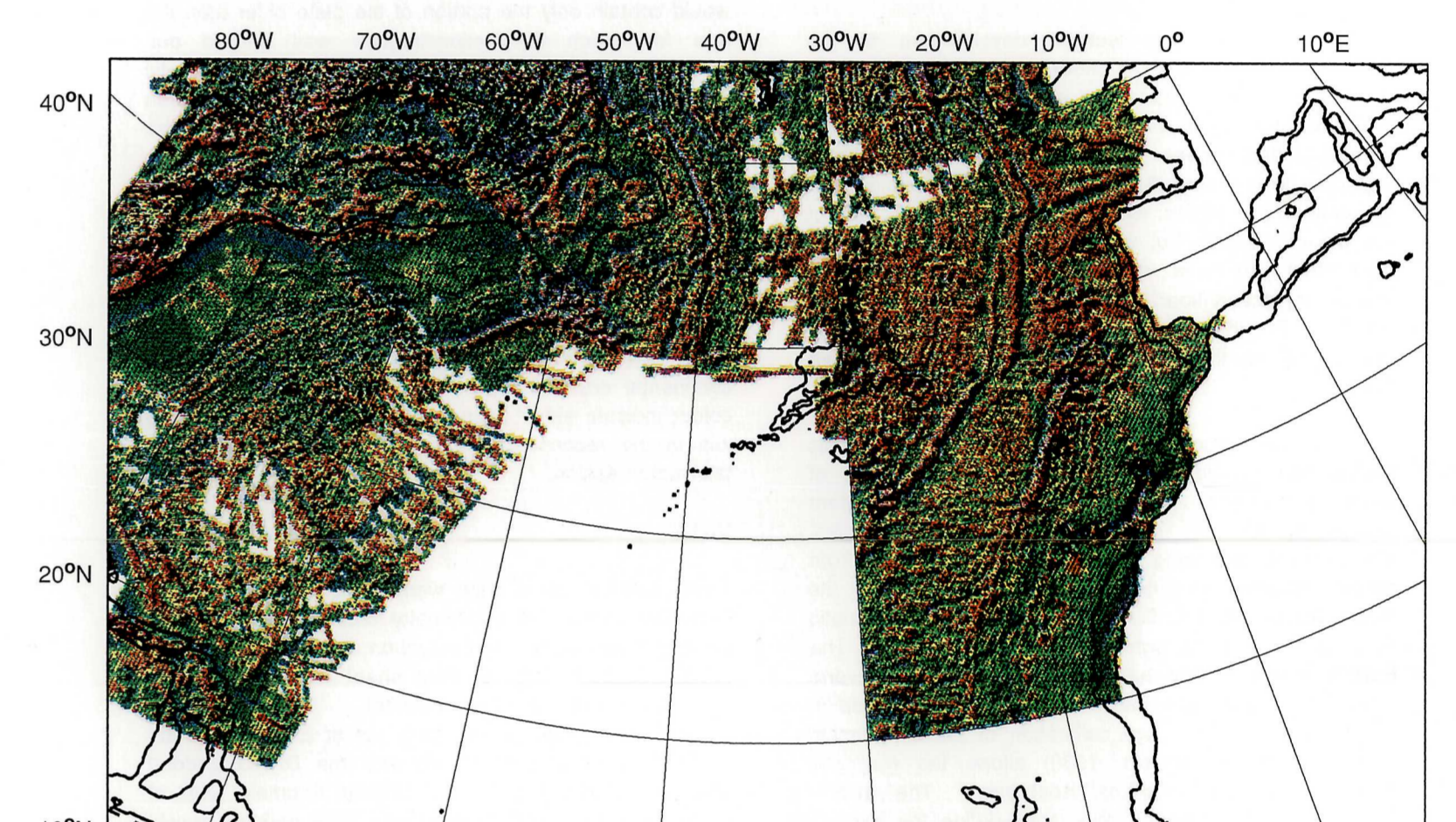
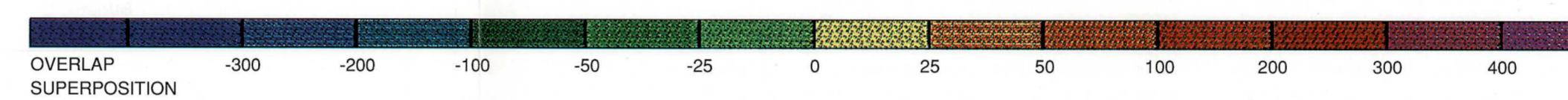
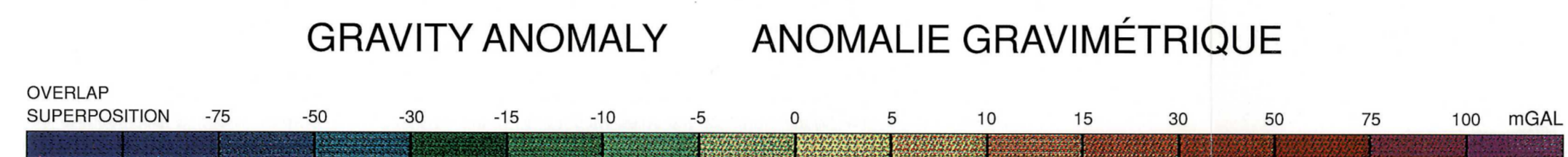


FIGURE 7. Magnetic data used in reconstructions
FIGURE 7. Données magnétiques utilisées pour les reconstitutions

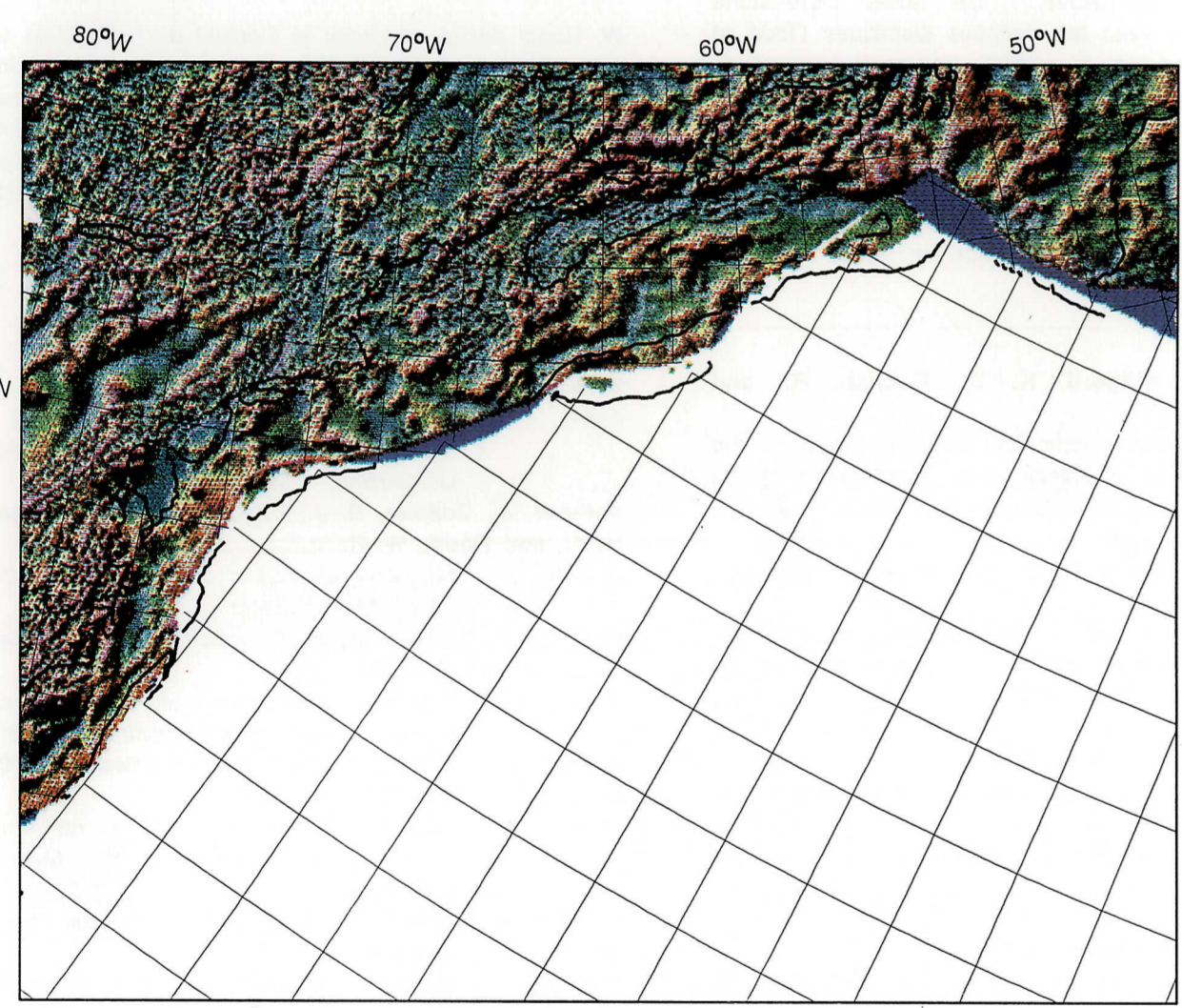


FIGURE 8. East Coast magnetic anomaly (175 Ma)
FIGURE 8. Anomalie magnétique de la côte Est (175 Ma)

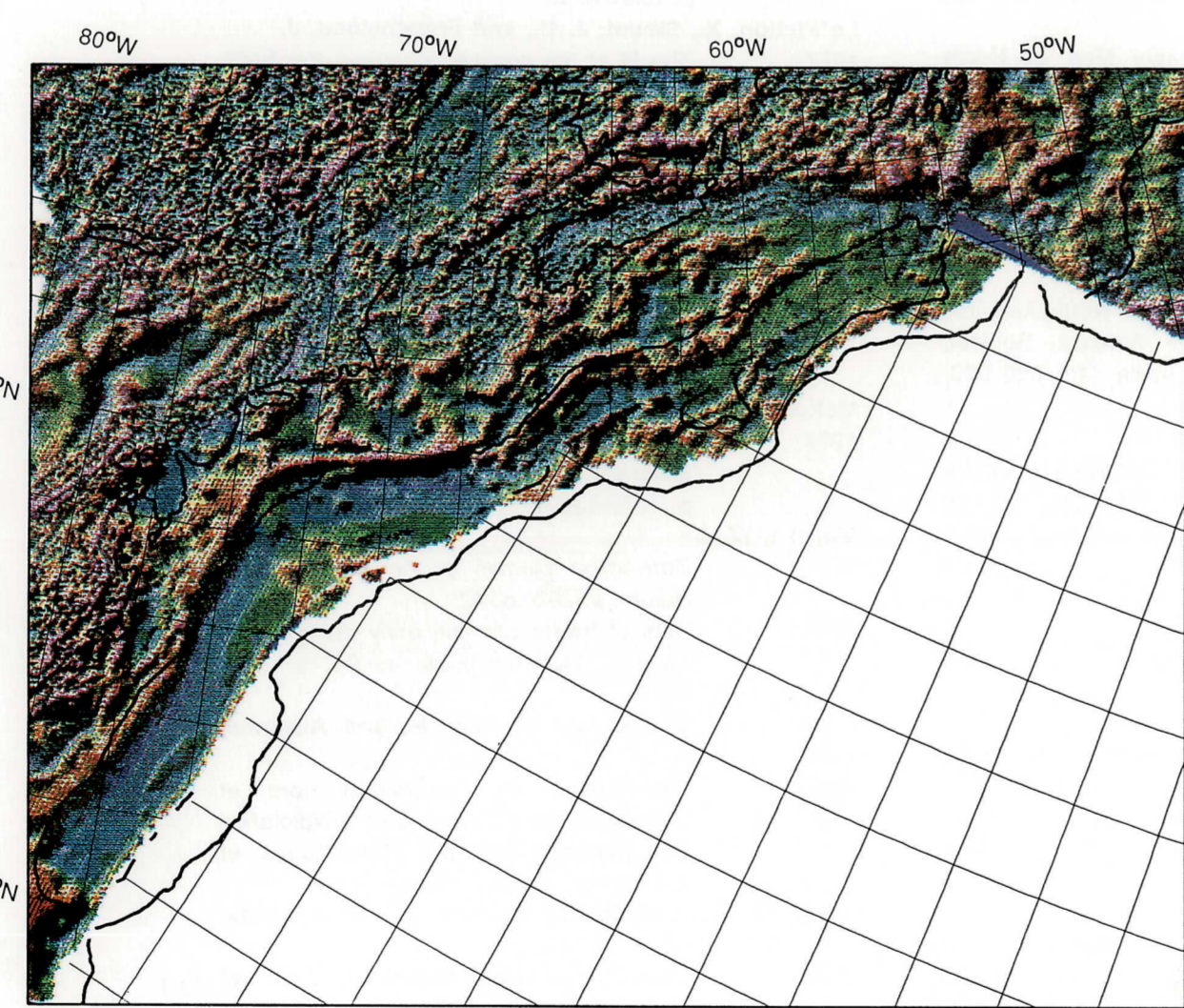


FIGURE 9. Blake Spur magnetic anomaly (170 Ma)
FIGURE 9. Anomalie magnétique de l'éperon Blake (170 Ma)

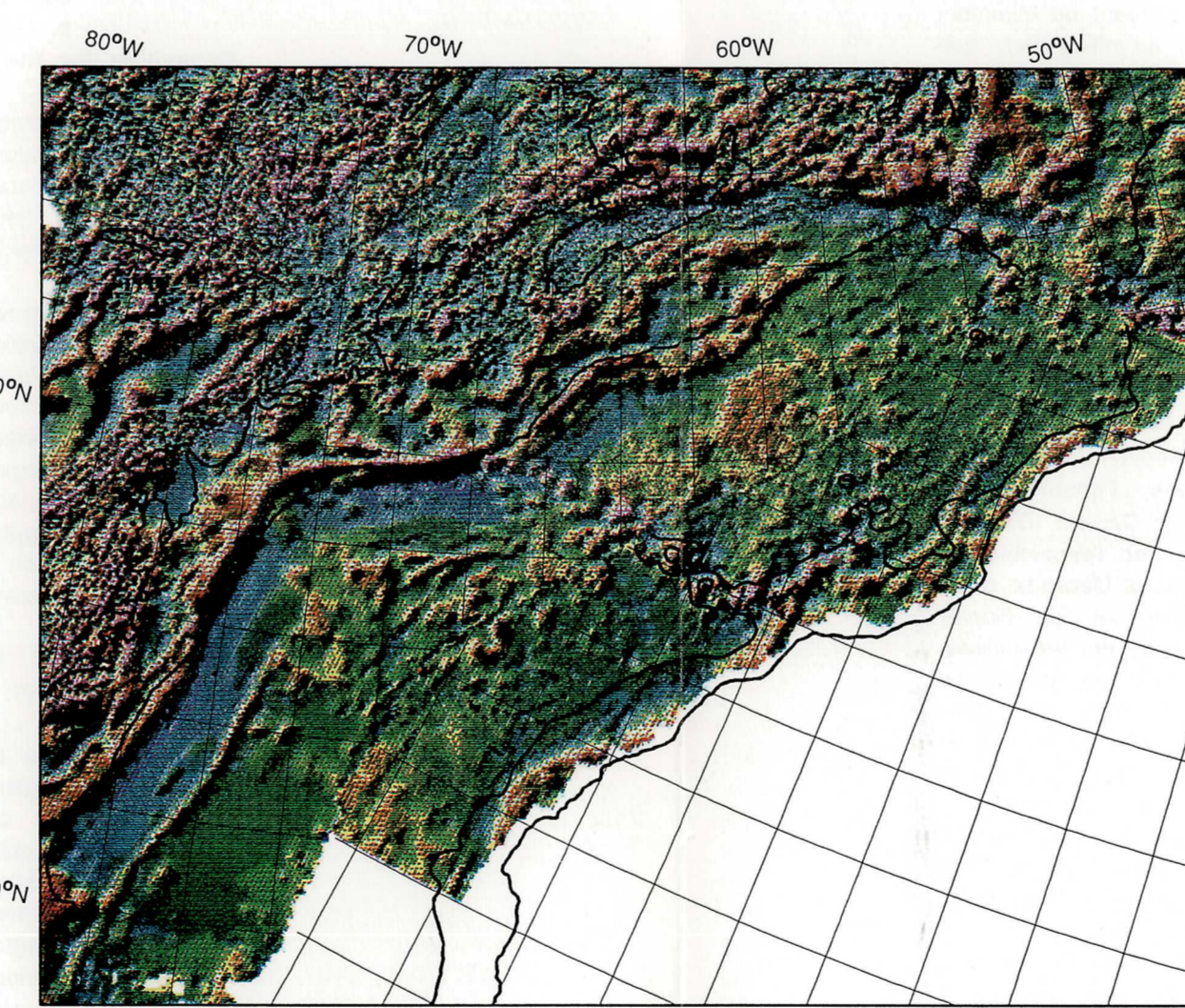


FIGURE 10. Anomaly M25 (156.5 Ma)
FIGURE 10. Anomalie M25 (156,5 Ma)

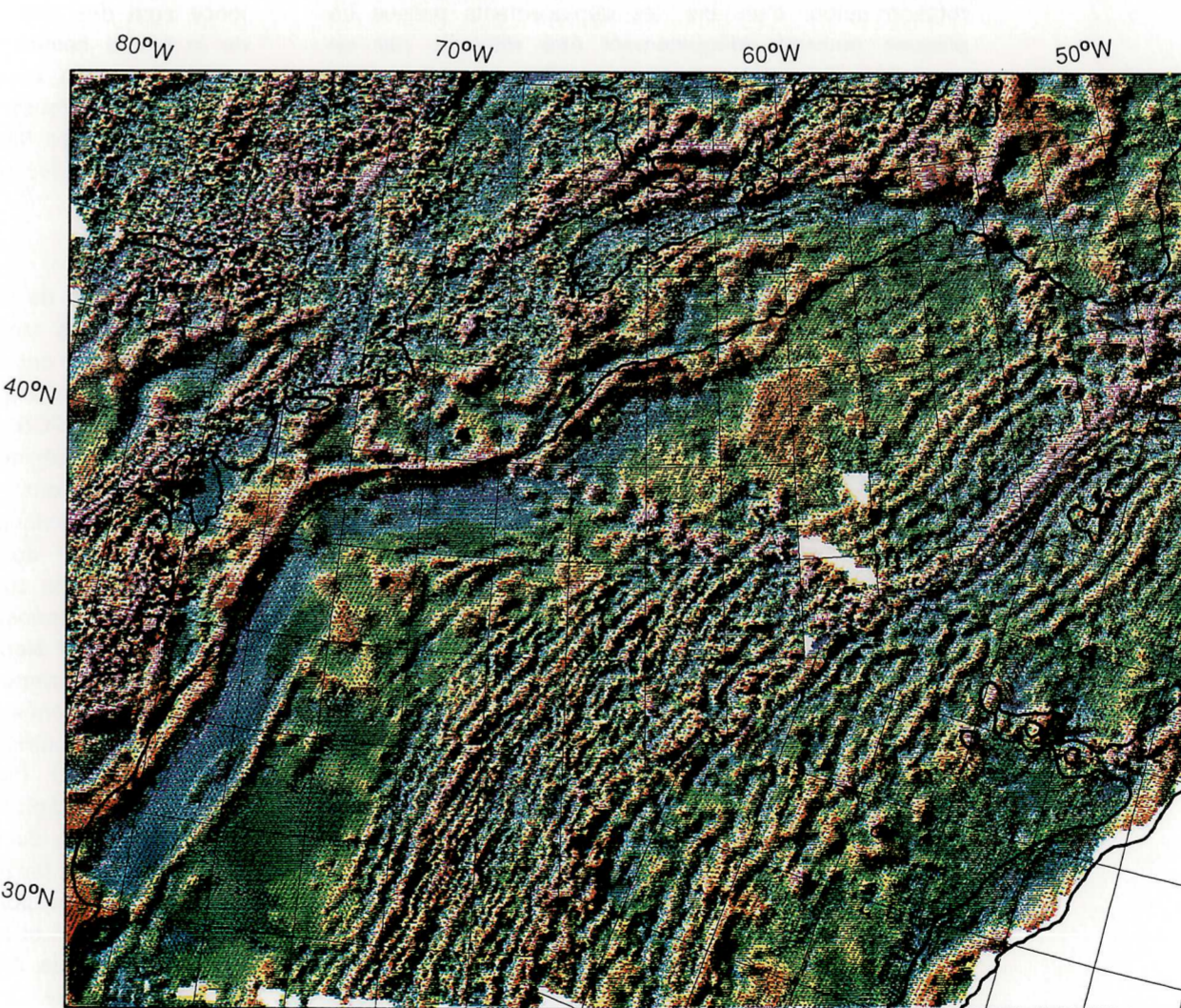


FIGURE 11. Anomaly M0 (118 Ma)
FIGURE 11. Anomalie M0 (118 Ma)

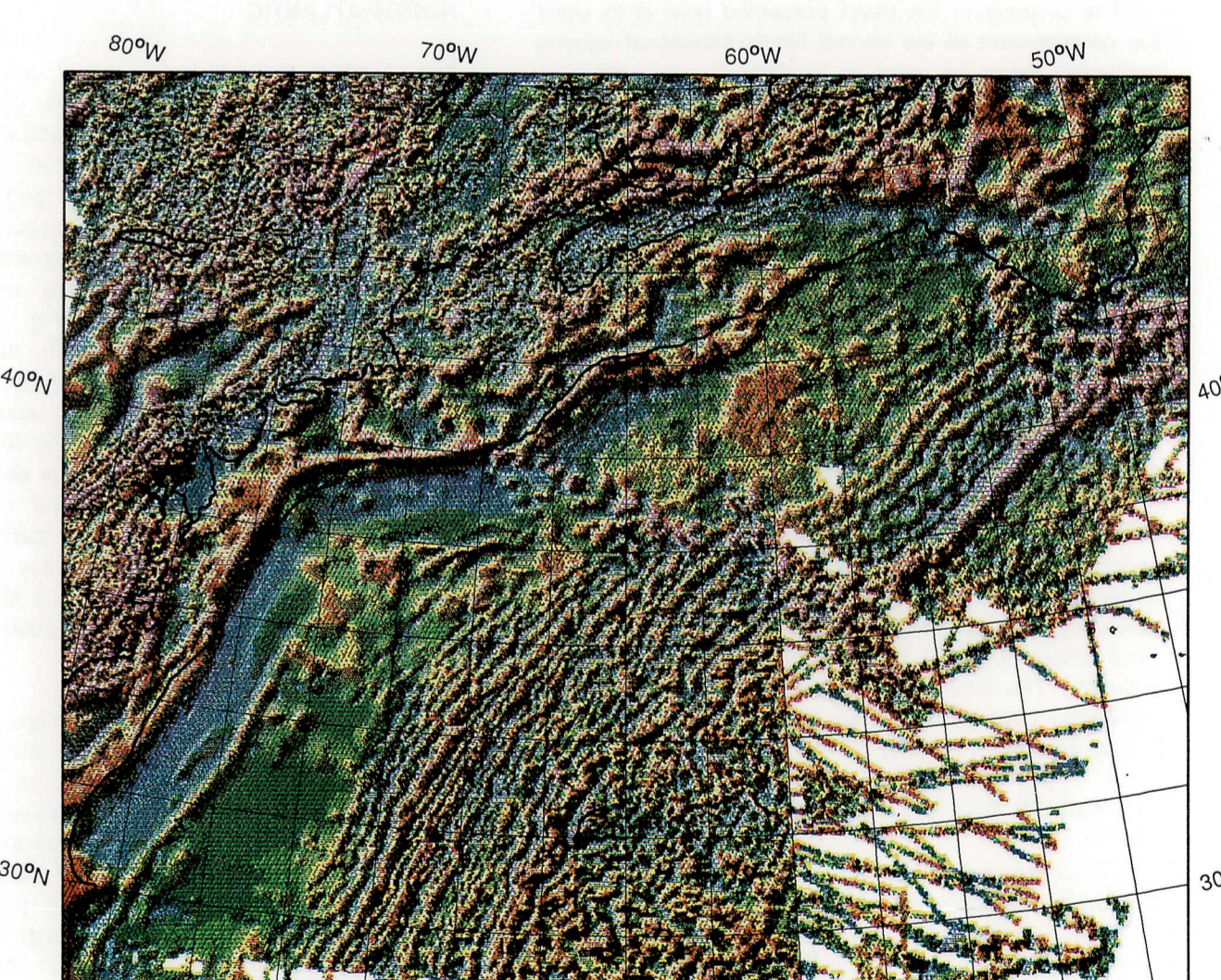


FIGURE 12. Present
FIGURE 12. Époque actuelle

SCOTIAN SHELF
REGIONAL GEOLOGY AND GEOPHYSICS
PLATE RECONSTRUCTIONS, GRAVITY AND MAGNETIC ANOMALIES

6 PLATE-FORME NÉO-ÉCOSSAISE
GÉOLOGIE ET GÉOPHYSIQUE RÉGIONALES
RECONSTITUTIONS DE PLAQUES, ANOMALIES GRAVIMÉTRIQUES ET MAGNÉTIQUES