

ISOPACH OF TRANSGRESSIVE SYSTEM MANNVILLE GROUP

British Columbia - Manitoba

Contour Interval 20 m

Scale 1:2 000 000

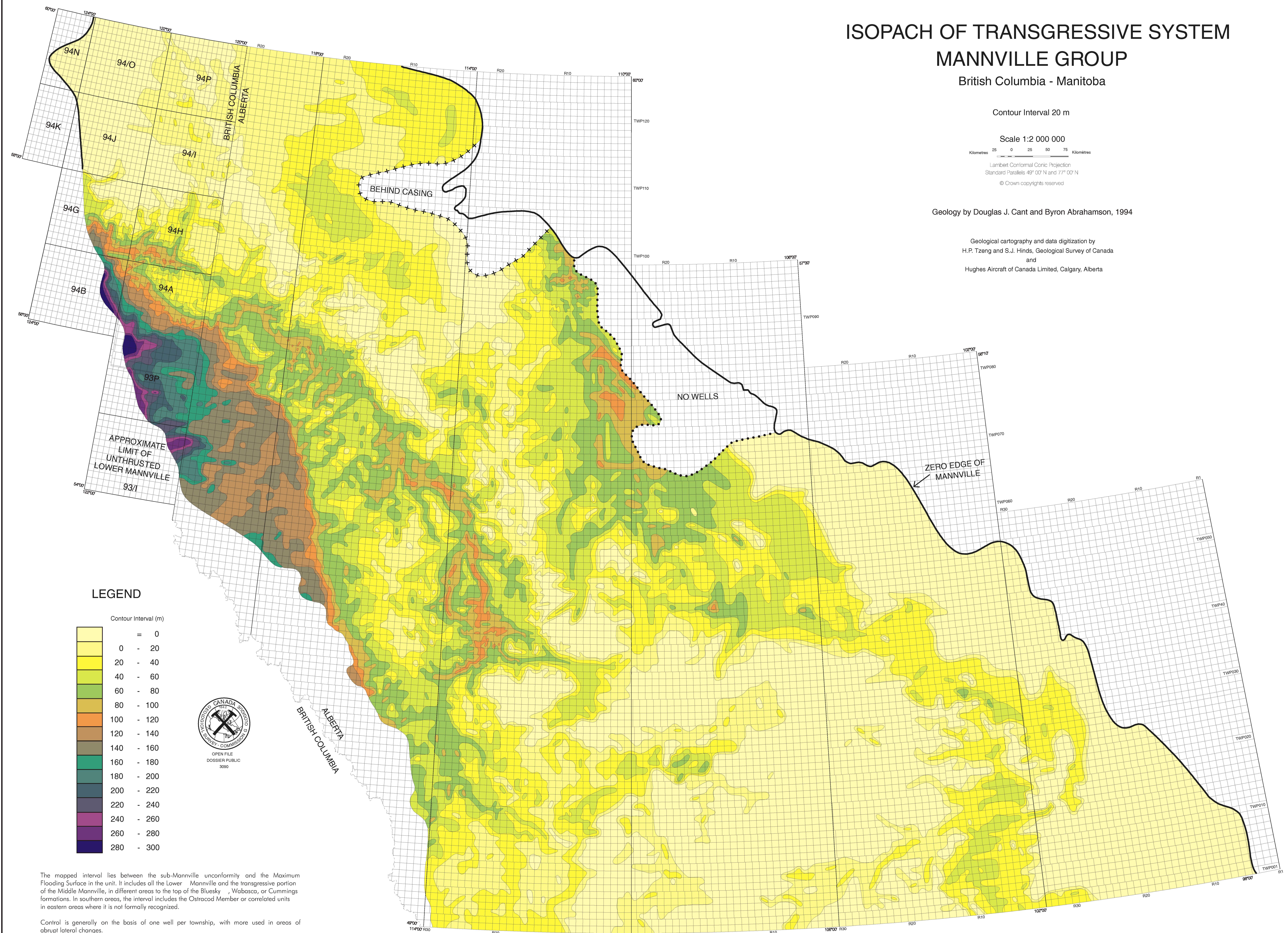
Kilometres 25 0 25 50 75 Kilomètres

Lambert Conformal Conic Projection
Standard Parallels 49° 00' N and 77° 00' N

© Crown copyrights reserved

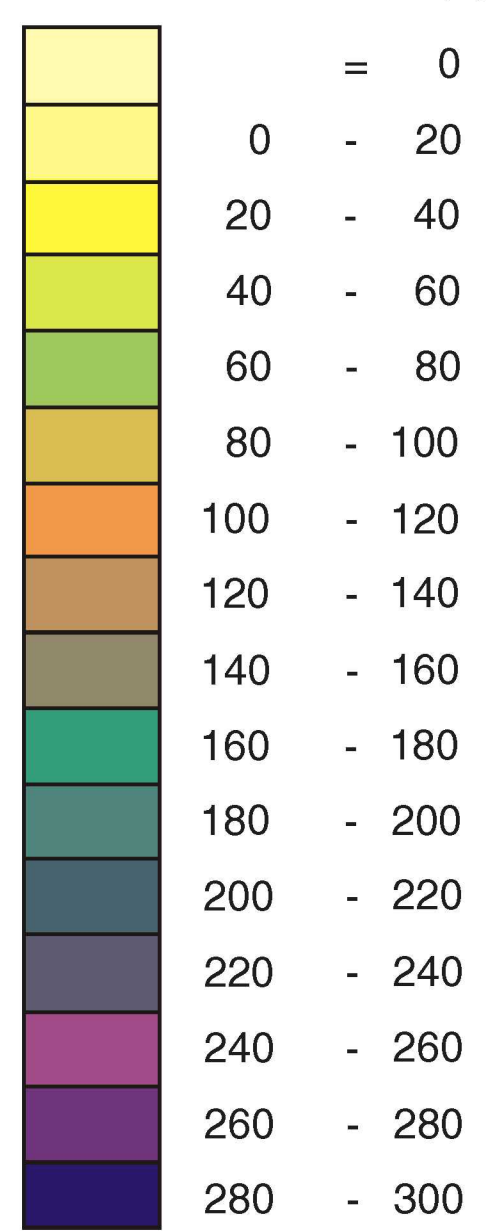
Geology by Douglas J. Cant and Byron Abrahamson, 1994

Geological cartography and data digitization by
H.P. Tzeng and S.J. Hinds, Geological Survey of Canada
and
Hughes Aircraft of Canada Limited, Calgary, Alberta



LEGEND

Contour Interval (m)



OPEN FILE
DOSSIER PUBLIC
3090

BRITISH COLUMBIA
ALBERTA

The mapped interval lies between the sub-Mannville unconformity and the Maximum Flooding Surface in the unit. It includes all the Lower Mannville and the transgressive portion of the Middle Mannville, in different areas to the top of the Bluesky, Wabasca, or Cummings formations. In southern areas, the interval includes the Ostracod Member or correlated units in eastern areas where it is not formally recognized.

Control is generally on the basis of one well per township, with more used in areas of abrupt lateral changes.