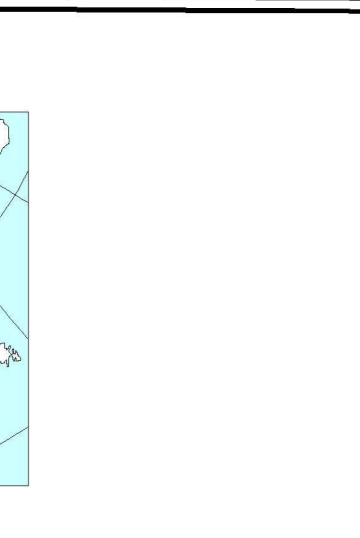
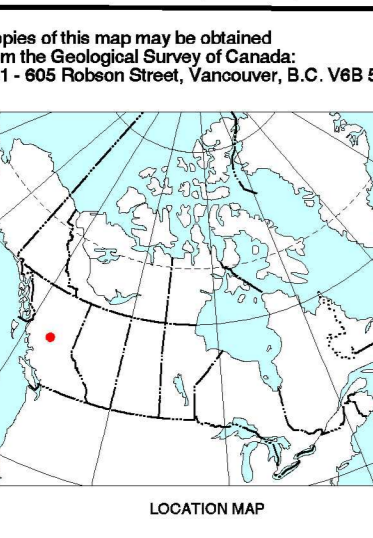


LEGEND: TERTIARY MIOCENE (Mc), EOCENE (EE), MESOZOIC AND TERTIARY CRETACEOUS-EARLY TERTIARY (KTg), MESOZOIC (KTS), MIDDLE JURASSIC STAG LAKE SUITE (mJT - mJM), LATE TRIASSIC - EARLY JURASSIC (TJd), MIDDLE TRIASSIC - LOWER TRIASSIC (TJd), INZANA LAKE FORMATION (TTi), CACHE CREEK GROUP (TCCs), WHITEFISH SUCCESSION (TCCl), TEZZERON SUCCESSION (TJCCl), PALEOZOIC AND MESOZOIC PERMIAN - TRIASSIC (PCCv), UPPER CARBONIFEROUS - TRIASSIC MOUNT POPE SUCCESSION (uCTCCl - uCCCV), RAILWAY SUCCESSION (uCTCCr), TREMBLEUR ULTRAMAFIC (uCTCCu). SYMBOLS: Geological contact, Faults, Roads, Trail, Railway, Contour, etc. REFERENCES: Nelson et al. 1991, Armstrong et al. 1949, Ash et al. 1993, Struik et al. 1998.

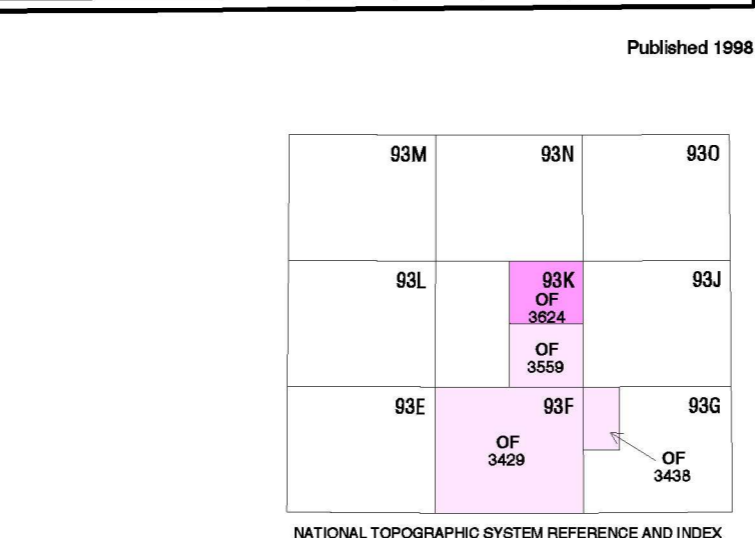
FOSSIL INFORMATION TABLE with columns: SITE NO., FOSSIL, AGE, EASTING, NORTHING, SAMPLE NO., GSC NO. Includes entries for sites K9-1 through K9-15 with fossil names like Chilcotin Group, Endakog Group, etc.



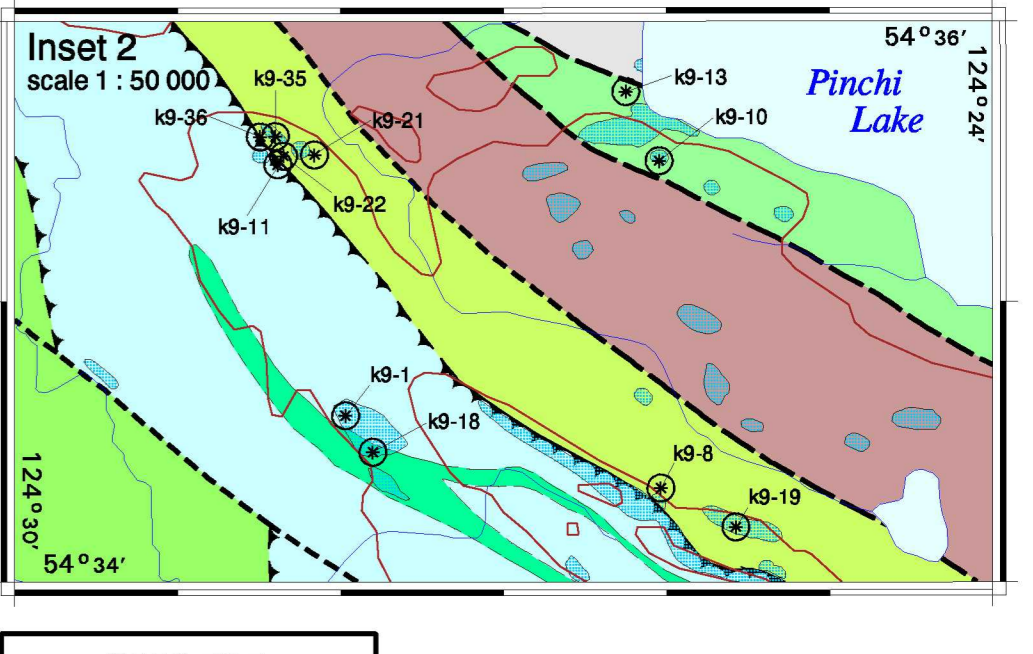
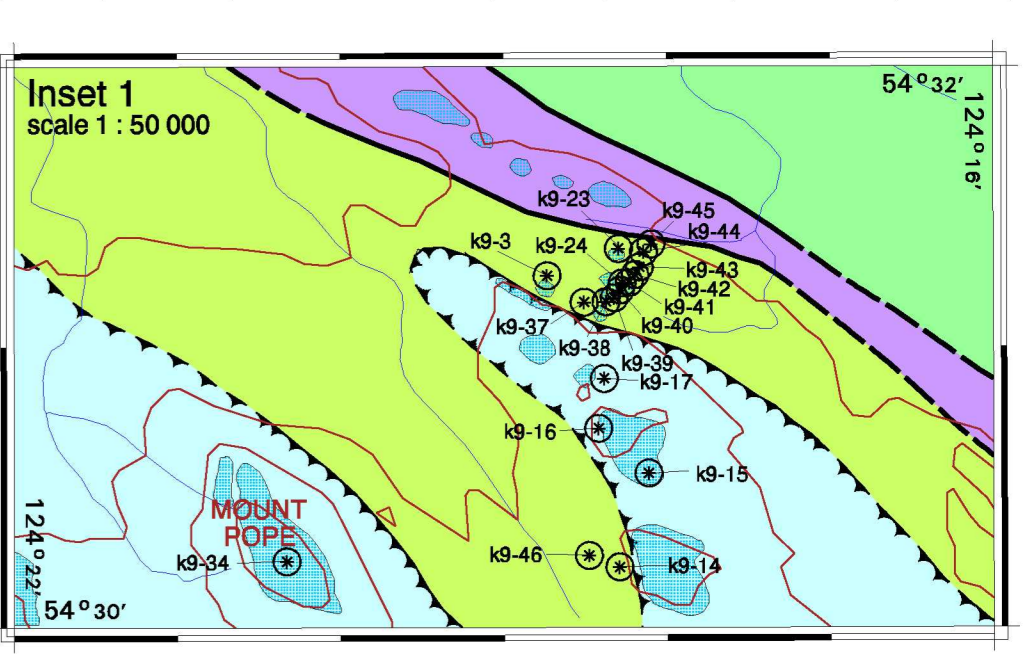
Geological compilation by L.C. Struik. Fossil determinations by M.J. Orchard, F. Corby and R. Lin. Digital cartography by S.P. Williams and H.J. Zabaneh. Digital base map from Geomatics Canada published at a different scale. Copies of the topographic version of this map may be obtained from the Canada Map Office, Natural Resources Canada, Ottawa, Ontario K1A 0G9.

OPEN FILE 3624
BEDROCK GEOLOGY
TEZZERON
BRITISH COLUMBIA
Scale 1:100 000 - Echelle 1/100 000
Transverse Mercator Projection
M.C. 124°30', Scale Factor 1.0

Magnetic declination 1998, 23°12' East, decreasing 8.5' annually. Readings vary from 22°27' E in the SE corner to 23°27' E in the NW corner of the map.
North American Datum 1927
Elevation in feet above mean sea level
Contour interval 500 feet



NATMAP CARTNAT logo and text: Canada's National Geoscientific Mapping Program / La Programme national de cartographie géoscientifique du Canada



OPEN FILE DOSSIER PUBLIC 3624
GEOLOGICAL SURVEY OF CANADA / COMMISSION GÉOLOGIQUE DU CANADA
OTTAWA
July 1, 1998
Recommended citation: Struik, L.C. 1998. Bedrock Geology of the Tezzeron map area, British Columbia. Geological Survey of Canada, Open File 3624, scale 1:100 000.