

LEGEND

QUATERNARY
PLEISTOCENE AND RECENT
Qs alluvium, colluvium, lake sills

CRETACEOUS
UPPER CRETACEOUS
Maastrichtian
uKw WAPITI FORMATION: sandstone, mudstone, coal
SANTONIAN AND CAMPANIAN
uKks KOTANEELI FORMATION: dark marine and alluvial; sandstone; minor conglomerate
CENOMANIAN
uKd DUNVEGAN FORMATION: carbonaceous sandstone, massive conglomerate, dark shale

MESOZOIC
UPPER AND LOWER CRETACEOUS
ALBIAN AND CENOMANIAN
Ksp SULLY FORMATION: dark grey siltstone shale
LOWER CRETACEOUS
FORT ST. JOHN GROUP (IKp - IKss)
IKss SIKANI FORMATION: grey sandstone, siltstone, shale
IKL LEPINE FORMATION: siltstone rusty weathering shale
IKs-1 Tussock Member: grey sandstone, siltstone, shale
IKs-w Withorn Member: concretionary shale
IKs-b Sullwell Member: glauconitic sandstone and siltstone
IKsp GARbutt FORMATION: siltstone rusty weathering shale
IKb BUCKINGHORSE FORMATION: dark marine shale and siltstone

TRIASSIC
UPPER TRIASSIC
uTLBP LUDINGTON, BALDONNEL, AND PARDONET FORMATIONS: dolomitic siltstones, light grey limestones, dark grey limestones
MIDDLE AND UPPER TRIASSIC
muTL LIARD FORMATION: orange brown dolomite and calcareous sandstones, siltstones, allstones; minor limestones
LOWER AND MIDDLE TRIASSIC
ImTg TOAD FORMATION: dark grey calcareous siltstones, and shale, minor fine-grained sandstone
ImTg GRAYLING FORMATION: silver grey locally calcareous shales basal fine-grained sandstones

PERMIAN
Pf FANTASQUE FORMATION: dark grey chert

CARBONIFEROUS AND PERMIAN
CPk KINDLE FORMATION: grey-brown fine grained calcareous sandstone, siltstone, dark grey shale; includes corallites of MATTSOON FORMATION, STODDARD GROUP AND FANTASQUE FORMATION

CARBONIFEROUS
LOWER CARBONIFEROUS
ICM MATTSOON FORMATION: fine and medium grained quartzose sandstones, shale

DEVONIAN AND CARBONIFEROUS
UPPER DEVONIAN TO LOWER CARBONIFEROUS
DCBR BESA RIVER FORMATION: dark grey, pyritic, siliceous shale; minor siltstone

DEVONIAN
MIDDLE DEVONIAN
mDd DUNEDIN FORMATION: medium grey well bedded fine grained limestones; minor calcarenite
LOWER AND MIDDLE DEVONIAN
ImDs STONE FORMATION: light grey, very finely crystalline dolomites; dolomite breccia
LOWER DEVONIAN
IDw WOKKASH FORMATION: yellow weathering fine grained sandstone, dolomite, siltstone, minor solution breccia

SILURIAN AND DEVONIAN
UPPER SILURIAN AND LOWER DEVONIAN
SDMm MUNCHO-McCONNELL FORMATION: medium grey finely crystalline dolomite; minor shale and sandstone

SILURIAN
LOWER SILURIAN
SN NONDA FORMATION: dark grey medium crystalline cherty dolomite, minor white orthoquartzite

ORDOVICIAN
LOWER ORDOVICIAN
Okc KECHICA GROUP: light grey limestone, argillaceous limestone

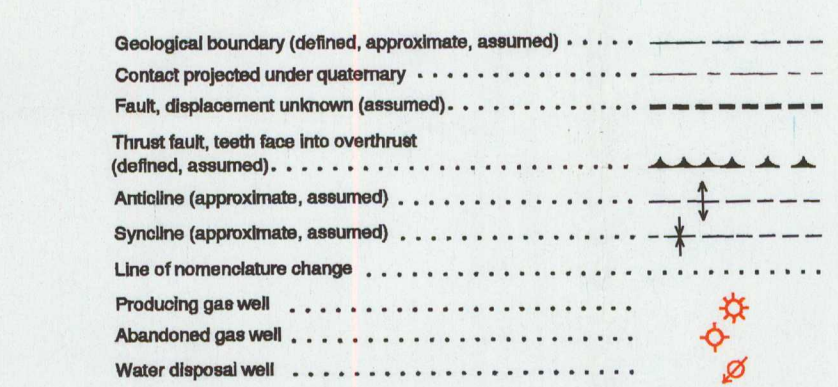
CAMBRIAN
LOWER AND (?) MIDDLE CAMBRIAN
Ccs red weathering coarse conglomerate, sandstone; minor limestone
Hts TUCHODI FORMATION: dolomite, dolomitic siltstone, sandstone, shale

MEGASPROTEROZOIC (HELIAN)

SCHEDULE OF WELLS (Wells listed by release date)

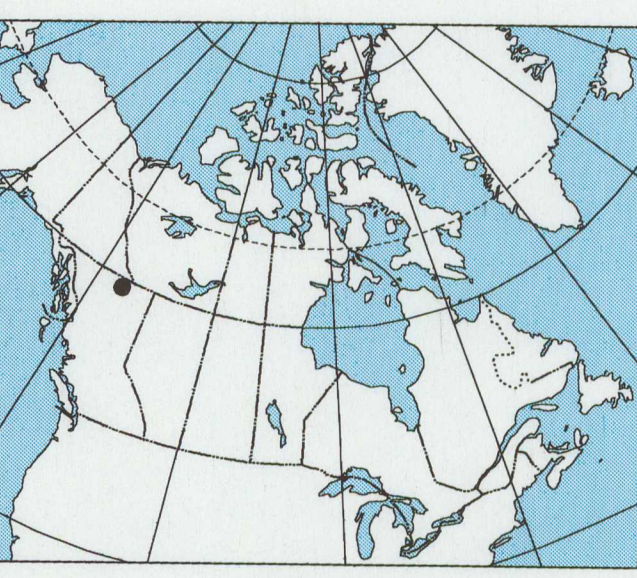
UWID	WELL NAME	SPUD DATE	* SURFACE LOCATION
1 - 2000084084N1000	MAYAN BEAVER D-084-K094-N-16	1/80/58	59 9708 -124 2845
2 - 2000084084N1002	MAYAN BEAVER D-084-K094-N-16	1/80/58	59 9708 -124 2845
3 - 2000078084N1000	MAYAN BEAVER D-078-K094-N-16	1/23/61	59 9808 -124 2781
4 - 2000078084N1002	MAYAN BEAVER D-078-K094-N-16	1/23/61	59 9808 -124 2781
5 - 2000078084N1004	MAYAN BEAVER D-078-K094-N-16	1/23/61	59 9808 -124 2781
6 - 2000078084N1004	MAYAN BEAVER D-078-K094-N-16	1/23/61	59 9808 -124 2781
7 - 2000078084N1005	MAYAN BEAVER D-078-K094-N-16	1/23/61	59 9808 -124 2781
8 - 2000078084N1006	MAYAN BEAVER D-078-K094-N-16	1/23/61	59 9808 -124 2781
9 - 2000084084N1100	SHILL, E GRAYLING D-084-F084-N-11	2/4/64	59 9830 -124 3024
10 - 2000084084N1000	PAN AM BEAVER C-046-K094-N-16	3/12/67	59 9850 -124 3102
11 - 2000084084N1002	PAN AM BEAVER C-046-K094-N-16	3/12/67	59 9850 -124 3102
12 - 2000078084N1000	MAYAN BEAVER C-027-K094-N-16	3/15/68	59 9894 -124 3331
13 - 2000078084N1002	MAYAN BEAVER C-027-K094-N-16	3/15/68	59 9894 -124 3331
14 - 2000084084N1000	MAYAN BEAVER D-A084-K094-N-16	9/10/68	59 9820 -124 3577
15 - 2000084084N1002	MAYAN BEAVER D-A084-K094-N-16	9/10/68	59 9820 -124 3577
16 - 2000084084N1004	IMCL SHILL TOAD D-087-K094-N-02	1/15/70	59 2140 -124 3311
17 - 2000084084N1002	MAYAN BEAVER D-A084-K094-N-16	1/15/70	59 9728 -124 2918
18 - 2000084084N1003	MAYAN BEAVER D-A084-K094-N-16	9/9/73	59 9728 -124 2918
19 - 2000084084N1004	MAYAN BEAVER D-A084-K094-N-16	1/15/70	59 9728 -124 2918
20 - 2000084084N1000	AMOCO CHEVRON CROW D-036-H094-N-15	2/27/71	59 9866 -124 3589
21 - 2000084084N1002	AMOCO CHEVRON CROW D-036-H094-N-15	2/27/71	59 9866 -124 3589
22 - 2000084084N1000	OAKWOOD JOE ET AL SCATTER D-088-F094-N-10	2/23/73	59 9866 -124 3578
23 - 2000084084N1000	AMOCO BEAVER C-084-K094-N-16	3/28/74	59 9866 -124 2966
24 - 2000084084N1002	AMOCO BEAVER C-084-K094-N-16	3/28/74	59 9866 -124 2966
25 - 2000084084N1003	AMOCO BEAVER C-084-K094-N-16	3/28/74	59 9866 -124 2966
26 - 2000084084N1004	AMOCO BEAVER C-084-K094-N-16	3/28/74	59 9866 -124 2966
27 - 2000084084N1005	AMOCO BEAVER C-084-K094-N-16	3/28/74	59 9866 -124 2966
28 - 2000084084N1006	AMOCO BEAVER C-084-K094-N-16	3/28/74	59 9866 -124 2966
29 - 2000078084N1000	TUOD CLARK BEAVERCROW B-087-J084-N-14	1/2/75	59 9708 -125 0872
30 - 2000084084N1000	PETROY ET AL DUNEDIN A-038-B094-N-08	1/9/79	59 2788 -124 2282
31 - 2000018084N1000	PENN WEST CROW D-016-A084-N-15	2/4/79	59 7657 -124 5678
32 - 2000018084N1002	PENN WEST CROW D-016-A084-N-15	2/4/79	59 7657 -124 5678
33 - 2000078084N0900	PCI WESTAR LA JULIE B-087-J094-N-09	1/10/86	59 9820 -124 0835
34 - 2000018084N1000	ADAK PCI CROW D-016-A084-N-15	3/14/89	59 7656 -124 5689
35 - 2000018084N1002	ADAK PCI CROW D-016-A084-N-15	3/14/89	59 7656 -124 5689
36 - 2000018084N1003	ADAK PCI CROW D-016-A084-N-15	3/14/89	59 7656 -124 5689
37 - 2000018084N1004	ADAK PCI CROW D-016-A084-N-15	3/14/89	59 7656 -124 5689
38 - 2000084084N1003	MAYAN BEAVER B-018-K094-N-16	6/21/89	59 9732 -124 2906
39 - 2000084084N1005	MAYAN BEAVER D-A084-K094-N-16	2/26/90	59 9728 -124 2918
40 - 2000084084N1006	MAYAN BEAVER D-A084-K094-N-16	1/23/91	59 9728 -124 2918
41 - 2000078084N1003	MAYAN BEAVER C-027-K094-N-16	1/8/92	59 9394 -124 3289
42 - 2000084084N1007	MAYAN BEAVER D-A084-K094-N-16	1/22/92	59 9728 -124 2918

* NOTE: Surface location measured from Central Meridian (negative values).



Copies of this map may be obtained from the Geological Survey of Canada: 3303-33rd Street N.W., Calgary, Alberta T2L 2A7

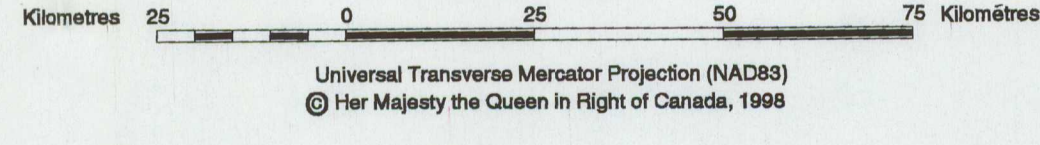
Published 1998



Base map at the same scale published by Surveys and Mapping Branch, 1971
elevations in metres above sea level
Magnetic declination 1970 varies from 30° 31' easterly at centre of west edge to 30° 32' easterly at centre of east edge.
Mean annual changes 5.4' westerly.

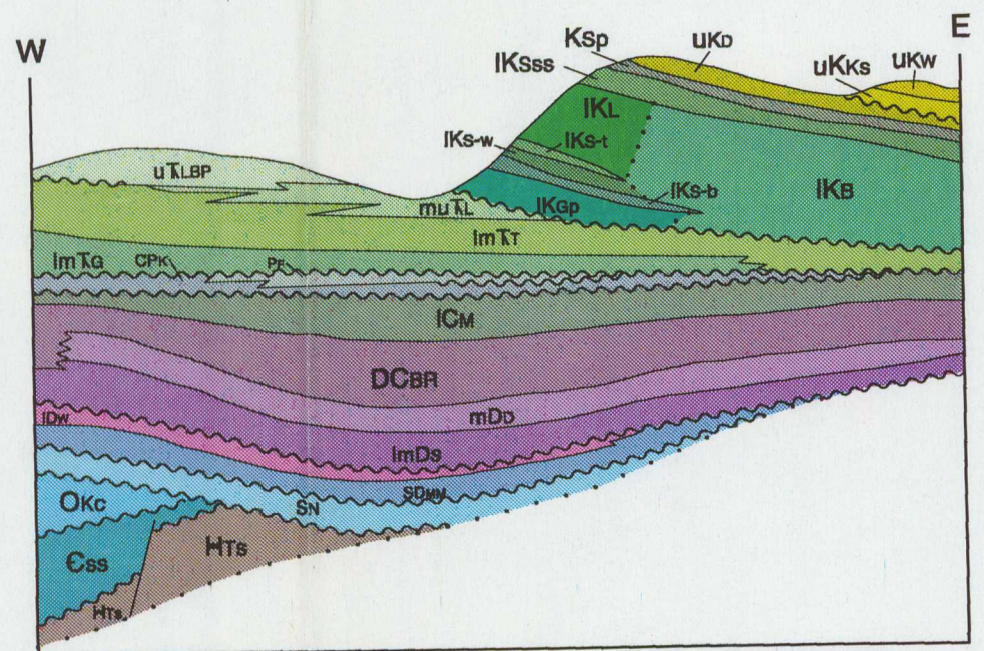
NTS MAP 94N
GEOLOGY
TOAD RIVER
PEACE RIVER DISTRICT
BRITISH COLUMBIA

Scale 1:250 000



OPEN FILE
DOSSIER PUBLIC
3598
GEOLOGICAL SURVEY
COMMISSION GÉOLOGIQUE
OTTAWA

Universal Transverse Mercator Projection (NAD83)
© Her Majesty the Queen in Right of Canada, 1998



Geological compilation by G.C. Taylor and D.F. Stott; 1979

Geology by: E.W. Bamber, R.T. Bell, B.S. Norford, D.F. Stott, and G.C. Taylor; 1983-1985

Geological cartography and data digitization by S.J. Hinds, Geological Survey of Canada under direction of A. V. Okulitch

Digital image processing by S.J. Hinds Geological Survey of Canada
Any revisions or additional geological information known to the user would be welcomed by the Geological Survey of Canada
Previously issued as GSC OF 673

This map has been reprinted from a scanned version of the original map
Reproduction par numérisation d'une carte papier

Recommended citation:
Taylor G.C. and Stott D.F. (compilers)
1997: Geology, Toad River (94N), Peace River District, British Columbia, scale 1:250 000. Geological Survey of Canada Open File 5898.