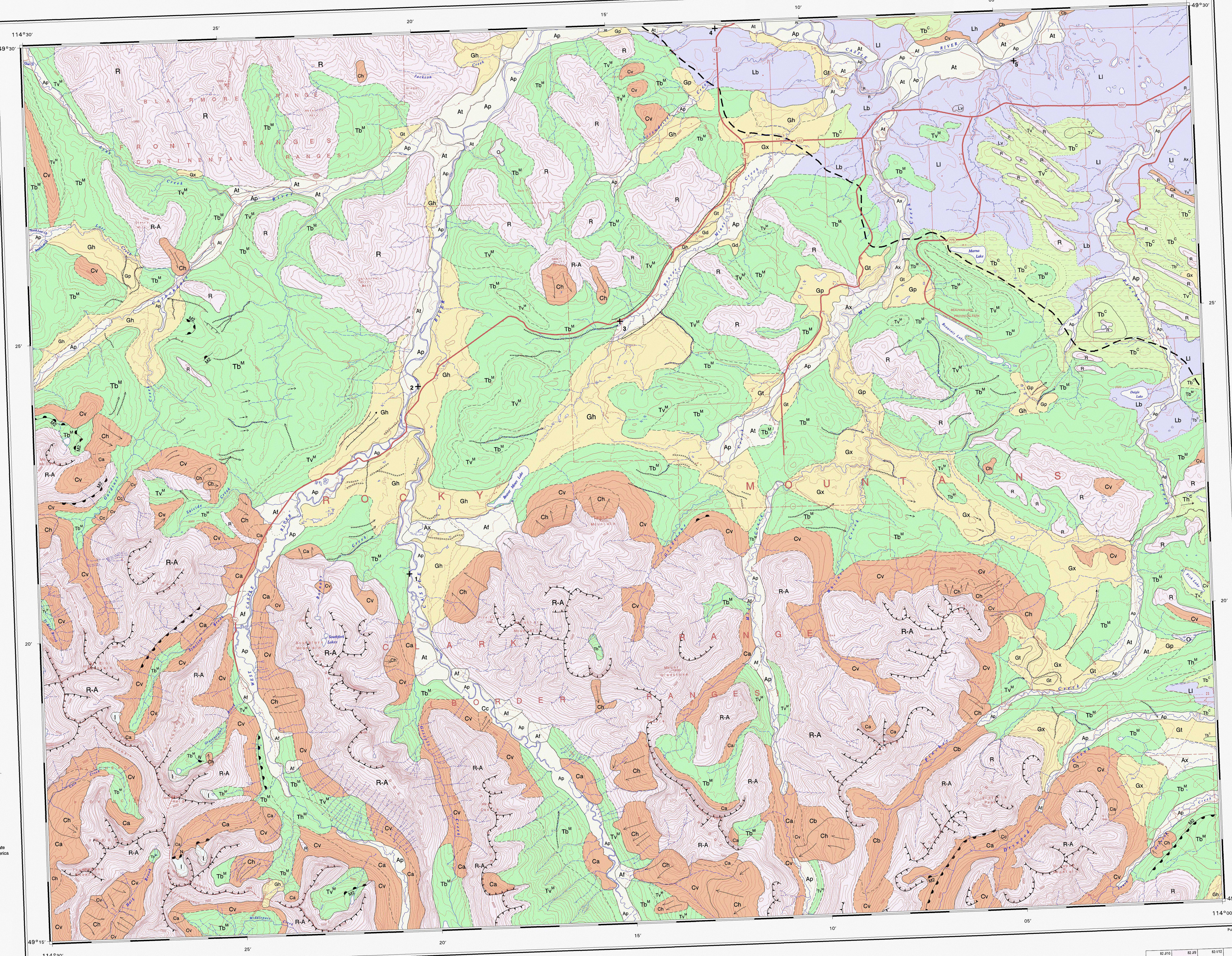


STRATIGRAPHIC SECTIONS

Table with 3 columns: Unit, Description, and Stratigraphic Section. Includes units like GM, TM, LE, and R with detailed geological descriptions.



LEGEND section containing QUATERNARY, ALLUVIAL SEDIMENTS, GLACIOFLUVIAL SEDIMENTS, and other geological features with corresponding symbols and descriptions.

SURFACE UNITS section with columns for Wisconsin - Erratic Train Glaciation, Pre-Wisconsinan, and other units with symbols and descriptions.

Map title: MAP 192A SURFICIAL GEOLOGY BEAVER MINES ALBERTA. Includes scale (1:50,000), north arrow, and publication information.

Table with columns for units (e.g., Gp, Gt, Gd, Gh, Gx, Gv) and their corresponding geological descriptions.