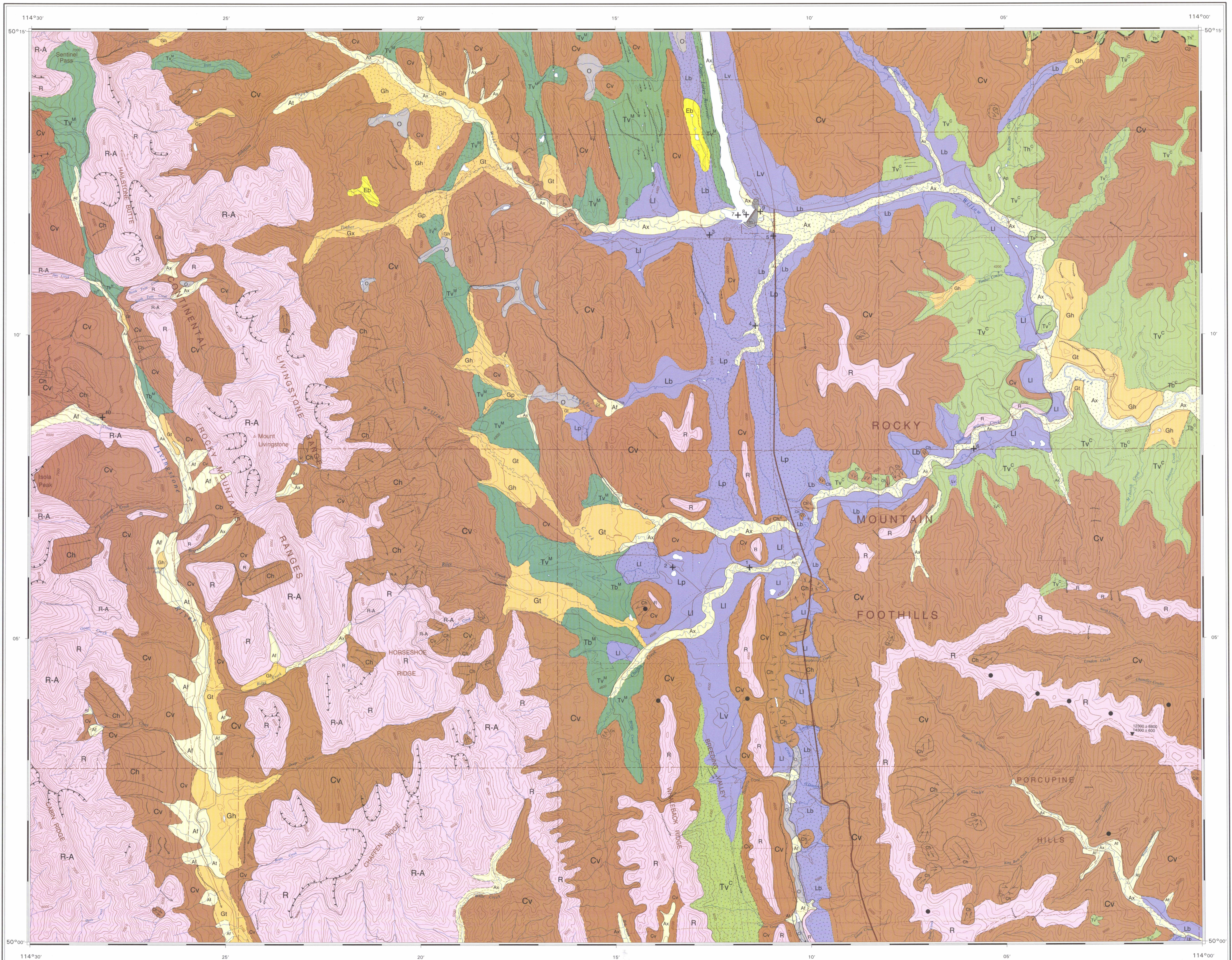


STRATIGRAPHIC SECTIONS 1-10. Descriptions of geological units including massive silt, clayey silt, diamicton, and various sandstone and shale types.

SUBSURFACE UNITS. Legend for subsurface units including Post Glacial, Wisconsinan-Eratic Train Glaciation, and Pre-glacial units.



LEGEND. Detailed legend for geological units, including Quaternary, Holocene, and various sediment types like diamicton, till, and glacial till.

MAP 1927A SURFICIAL GEOLOGY LANGFORD CREEK ALBERTA Scale 1:50 000 - Echelle 1/50 000

Grid coordinates table with columns for Easting and Northing values.

ESIC CIST stamp and other administrative markings including dates and signatures.