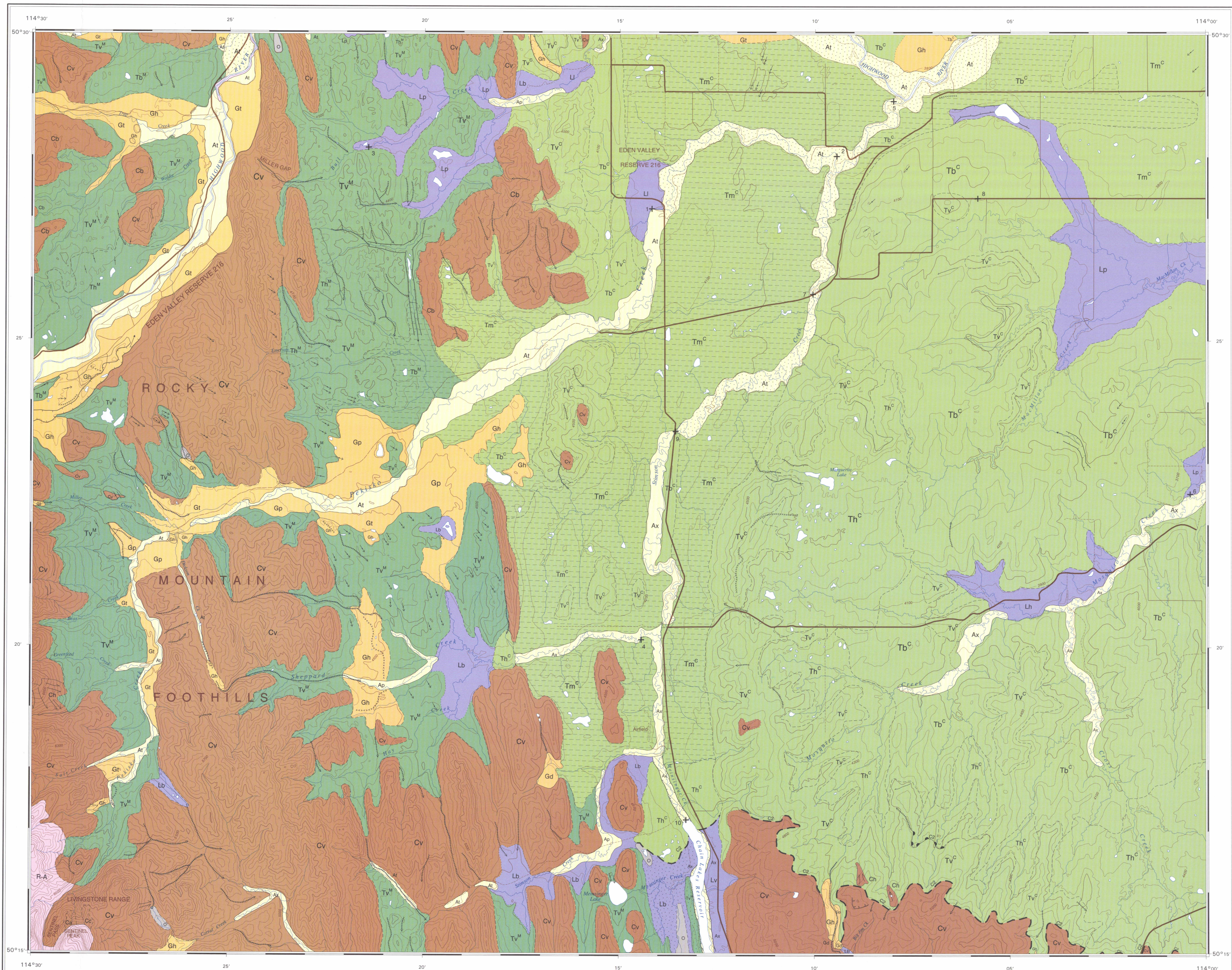


Stratigraphic sections 1-10, Subsurface units (Post Glacial, Wisconsin, Pre-Glacial, Glacial, and Post-Glacial), and a vertical scale in meters.



Map information including title 'MAP 1926A SURFICIAL GEOLOGY STIMSON CREEK ALBERTA', scale '1:50 000', projection details, and copyright information.

Detailed legend for the map, including Quaternary units (Holoocene, Alluvial, etc.), Wisconsinan Erratics, and other geological features.



This map has been produced from a scanned version of the original map / Reproduction par numérisation d'une carte sur papier



Recommended citation: Johnson, L.E., Jr., 1986. Surficial geology, Stimson Creek, Alberta. Geological Survey of Canada, Map 1926A, scale 1:50 000.

1926A