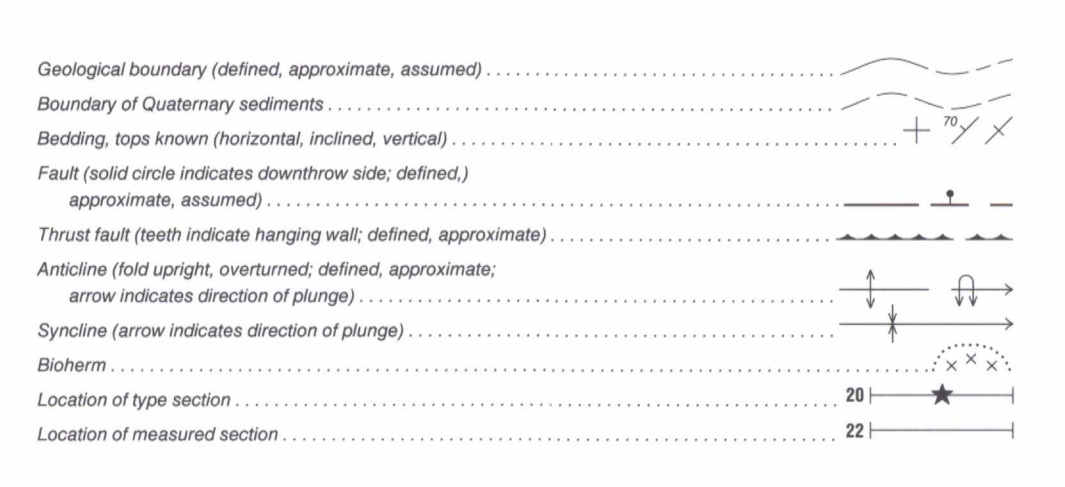
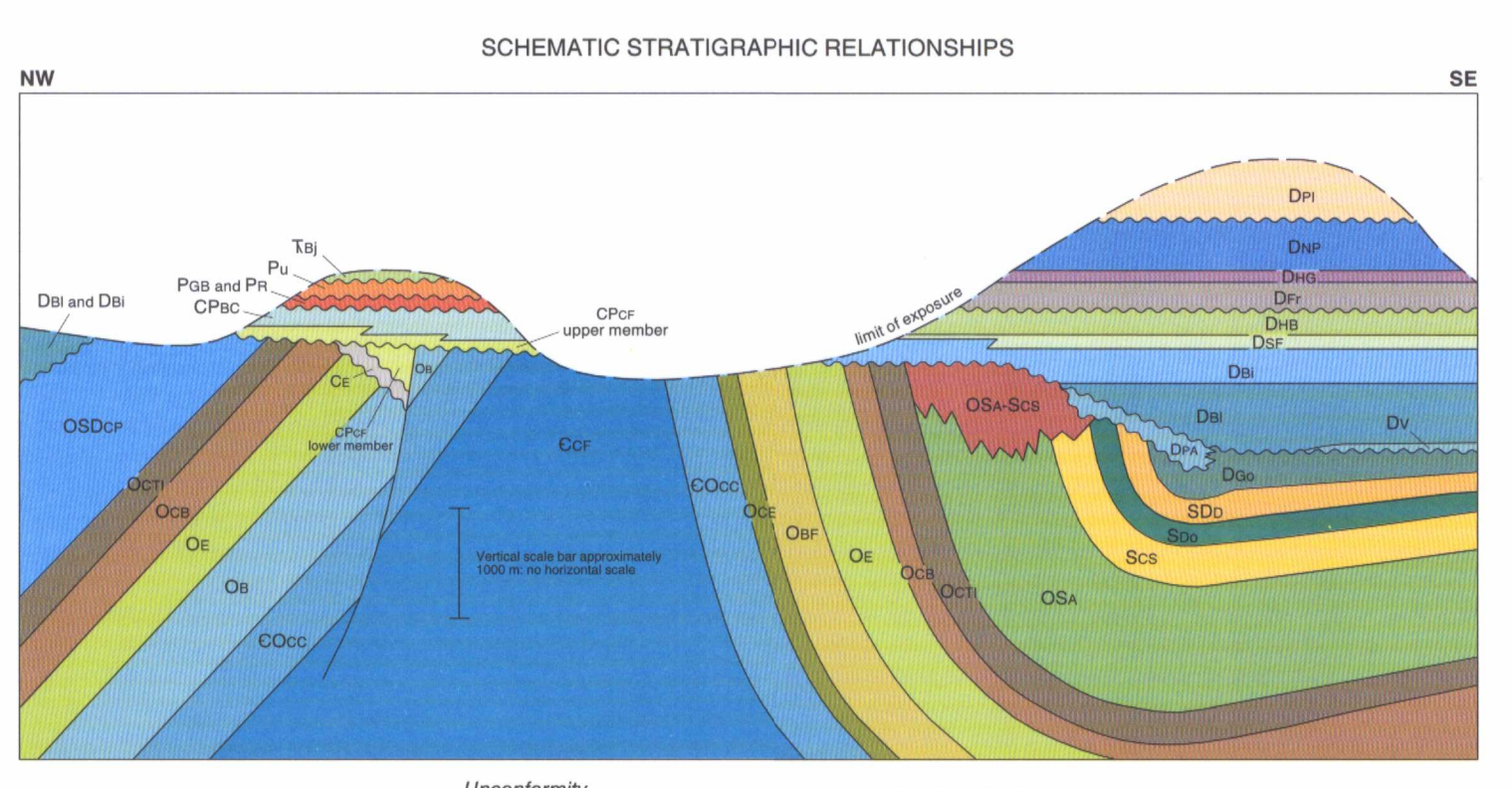


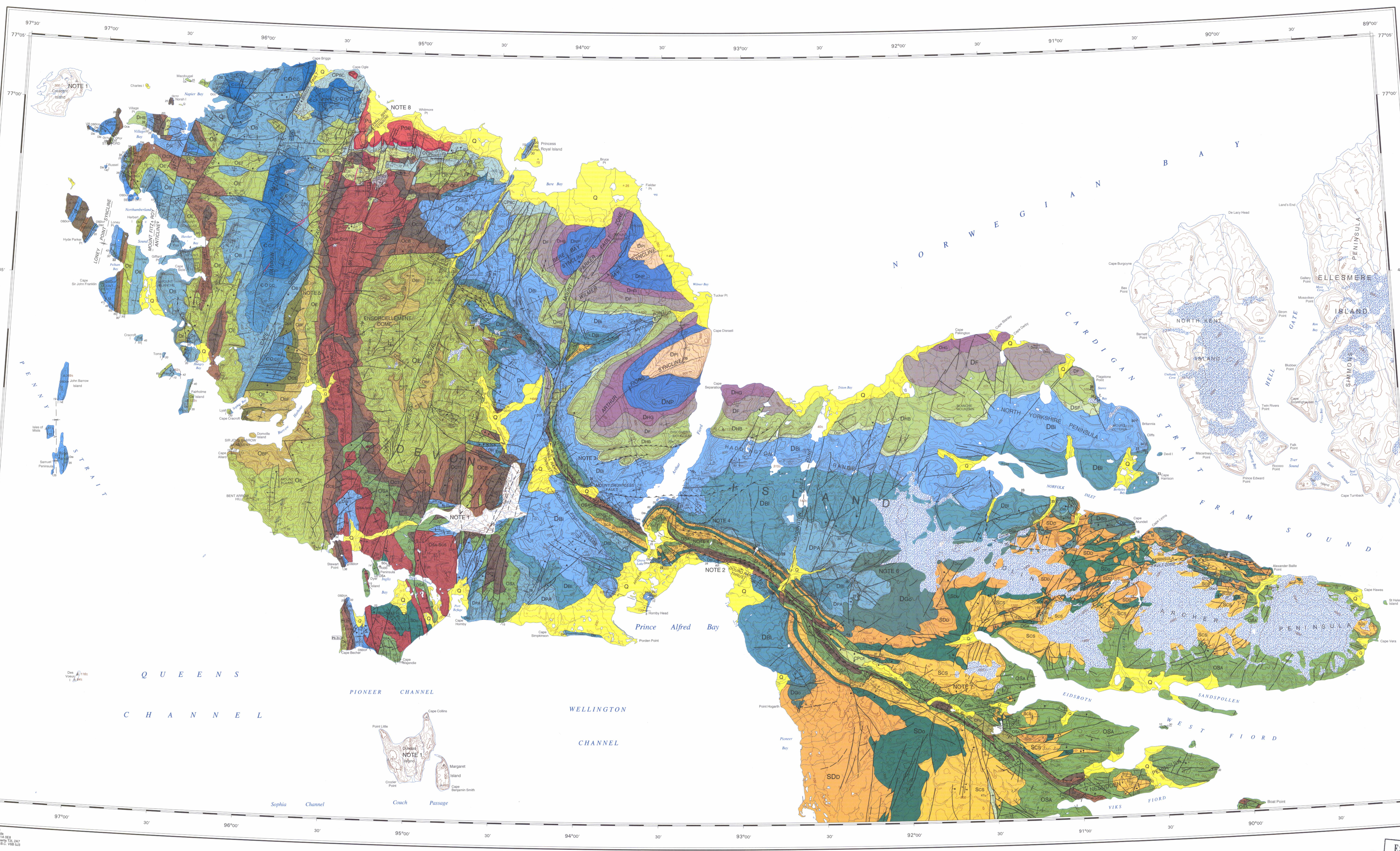
Table of geological units for the Western Part, listing units like Quaternary, Cretaceous, Permian, Carboniferous and Permian, Devonian, Silurian, Ordovician, and Cambrian with their corresponding symbols and brief descriptions.

Table of geological units for the Central Part, listing units like Quaternary, Cretaceous, Permian, Carboniferous and Permian, Devonian, Silurian, Ordovician, and Cambrian with their corresponding symbols and brief descriptions.

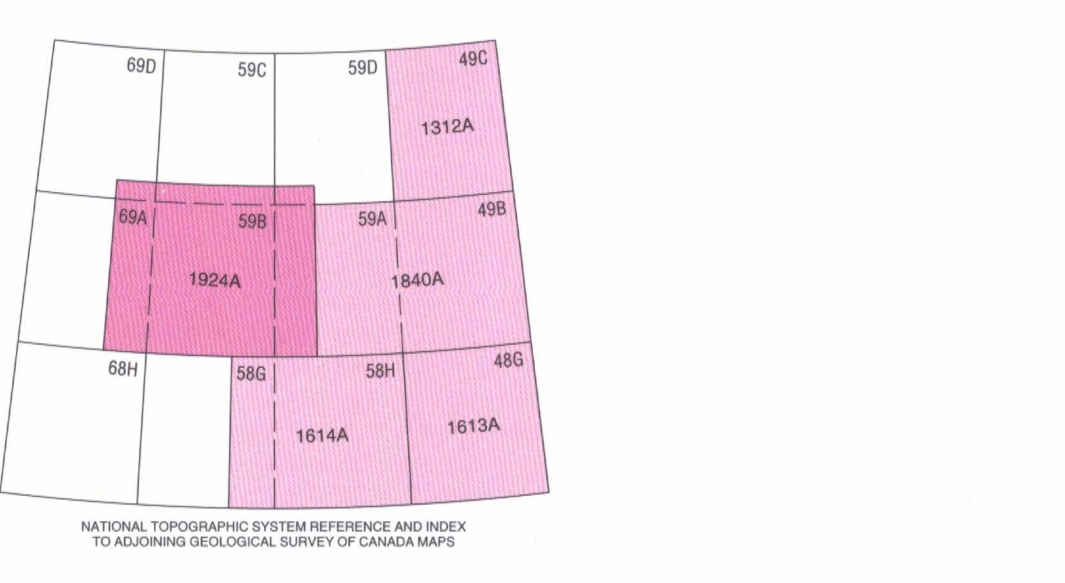
Table of geological units for the Eastern Part, listing units like Quaternary, Cretaceous and Tertiary, Carboniferous and Permian, Devonian, Silurian, and Ordovician with their corresponding symbols and brief descriptions.



- Notes section containing 7 numbered points providing detailed geological information, including references to other maps and geological surveys.



MAP 1924A GEOLOGY PRINCE ALFRED BAY - CARDIGAN STRAIT DISTRICT OF FRANKLIN NORTHWEST TERRITORIES Scale 1:250 000 - Echelle 1:250 000



ESIC CIST logo, date 22 1998, and other administrative information including 'MAP LIBRARY / CARTOTHEQUE'.

1924A