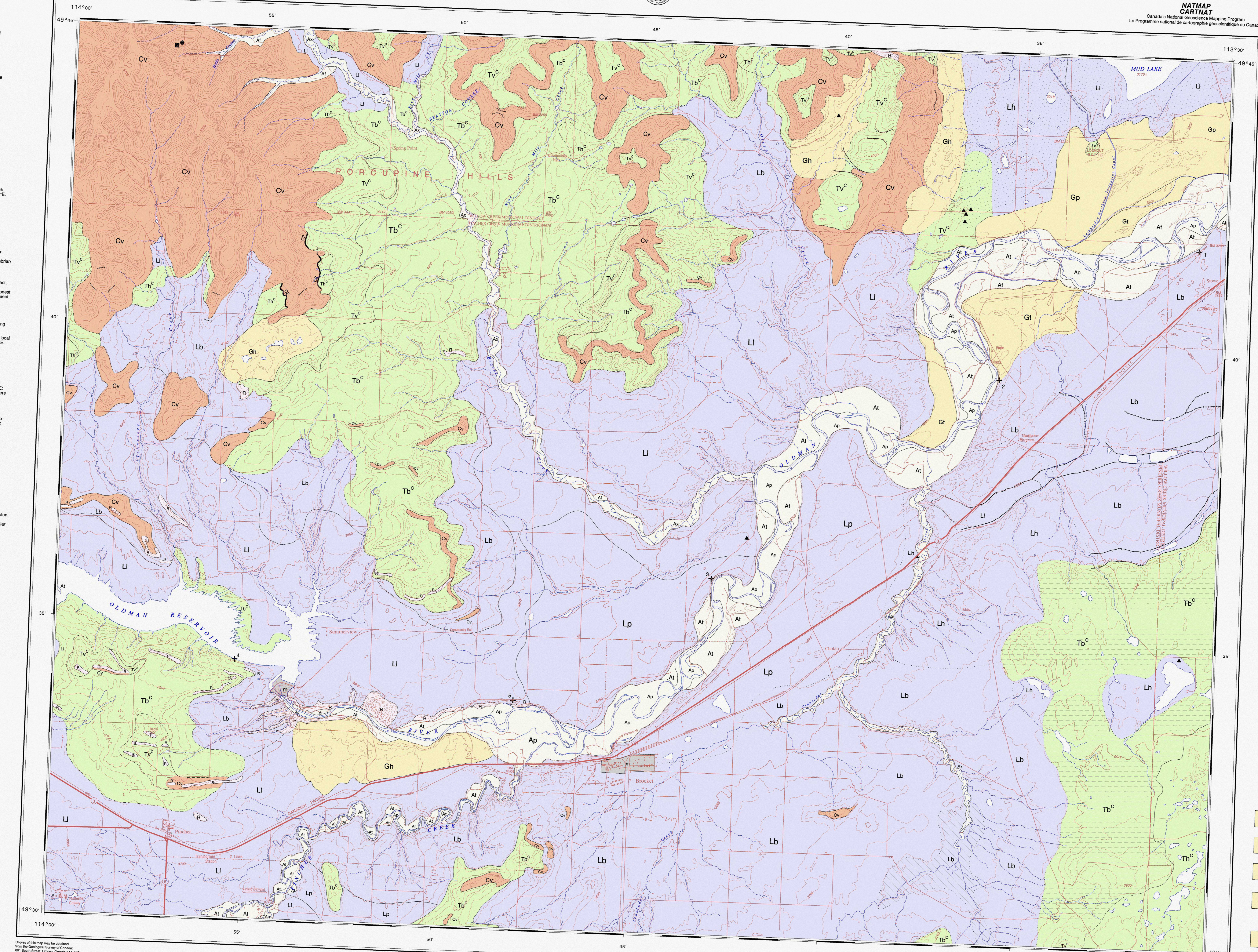


STRATIGRAPHIC SECTIONS

Stratigraphic column descriptions for units 1, 2, 3, 4, 5, 6, 7, 8, 9, 10, 11, 12, 13, 14, 15, 16, 17, 18, 19, 20, 21, 22, 23, 24, 25, 26, 27, 28, 29, 30, 31, 32, 33, 34, 35, 36, 37, 38, 39, 40, 41, 42, 43, 44, 45, 46, 47, 48, 49, 50, 51, 52, 53, 54, 55, 56, 57, 58, 59, 60, 61, 62, 63, 64, 65, 66, 67, 68, 69, 70, 71, 72, 73, 74, 75, 76, 77, 78, 79, 80, 81, 82, 83, 84, 85, 86, 87, 88, 89, 90, 91, 92, 93, 94, 95, 96, 97, 98, 99, 100.



Legend, QUATERNARY, ALLUVIAL SEDIMENTS, WISCONSINAN, GLACIOFLUVIAL SEDIMENTS, and other geological classification tables with symbols and descriptions.

SURFACE UNITS legend with symbols for Proglacial, Wisconsinan, and Post-Wisconsinan units.

MAP 1931A SURFICIAL GEOLOGY BROCKET ALBERTA

Scale 1:50 000 - Echelle 1:50 000. Includes map of Alberta, author information, and copyright details.

Elevation table with columns for Easting and Northing coordinates and corresponding elevation values in meters.



Recommended citation: Lacroix, C.L. 1988. Surficial geology, Brocket, Alberta. Geological Survey of Canada, Map 1931A, scale 1:50 000.