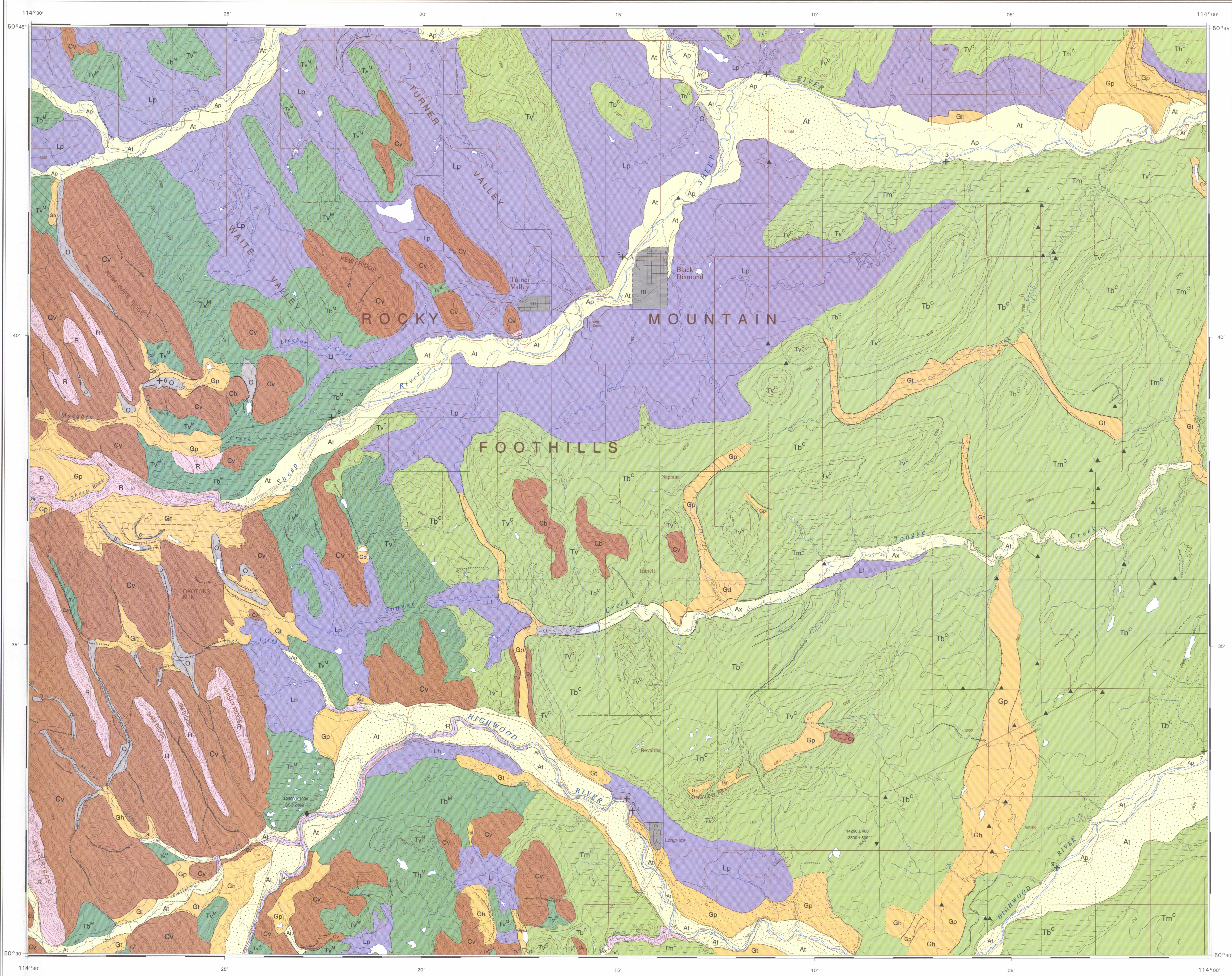
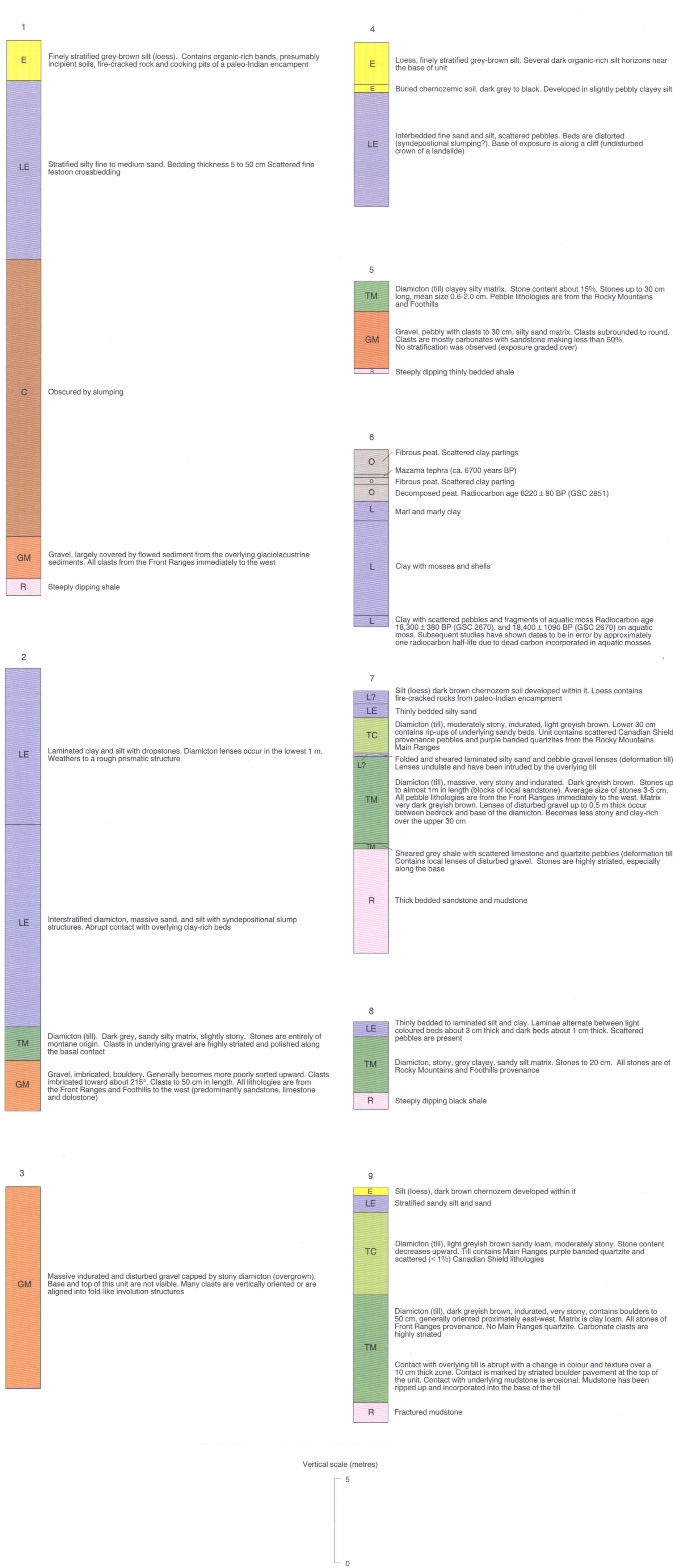
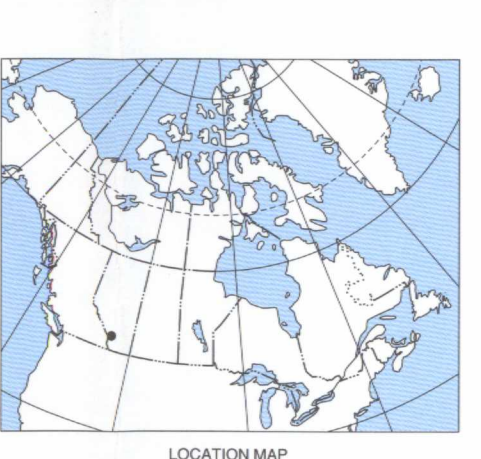


STRATIGRAPHIC SECTIONS



Copy of this map may be obtained from the Geological Survey of Canada...



MAP 1925A SURFICIAL GEOLOGY TURNER VALLEY ALBERTA Scale 1:50 000 - Echelle 1/50 000

Geology by L.E. Jackson, Jr., 1974, 1976, and 1993. Co-ordinated by D. Label through the auspices of the Southern Alberta NATMAP Project.

Digital cartography by K. Srinivasan, Terrain Sciences Division and P.M. O'Brien, Geoscience Information Division.

LEGEND, QUATERNARY, HOLOCENE - Post Erratic Train Glaciation, MADE LAND: Artificial fill and mine waste, EXISTING GLACIERS, ICE: Flowing or stagnant glacial ice, ORGANIC SEDIMENTS, EOLIAN SEDIMENTS, COLLUVIAL SEDIMENTS, ALLUVIAL SEDIMENTS, WISCONSINAN - Erratic Train Glaciation, GLACIOFLUVIAL SEDIMENTS, GLACIOFLUVIAL DELTA SEDIMENTS, UNDIVIDED GLACIOFLUVIAL AND FAN SEDIMENTS, TERRACED GLACIOFLUVIAL SEDIMENTS, GLACIOFLUVIAL ICE STAGNATION COMPLEX SEDIMENTS, UNDIVIDED GLACIOFLUVIAL AND GROUND MORAINAL SEDIMENTS, GLACIOFLUVIAL VENEER SEDIMENTS.

Geological grid table with columns for Easting (82 210 to 82 215) and Northing (1925A to 1925B) coordinates.

ESIC CIST JUN 22 1998 Earth Sciences Section des sciences de la Terre MAP LIBRARY / CARTOTHEQUE

Recommended citation: Jackson, L.E., Jr., 1998. Surficial geology, Turner Valley, Alberta. Geological Survey of Canada, Map 1925A, scale 1:50 000.