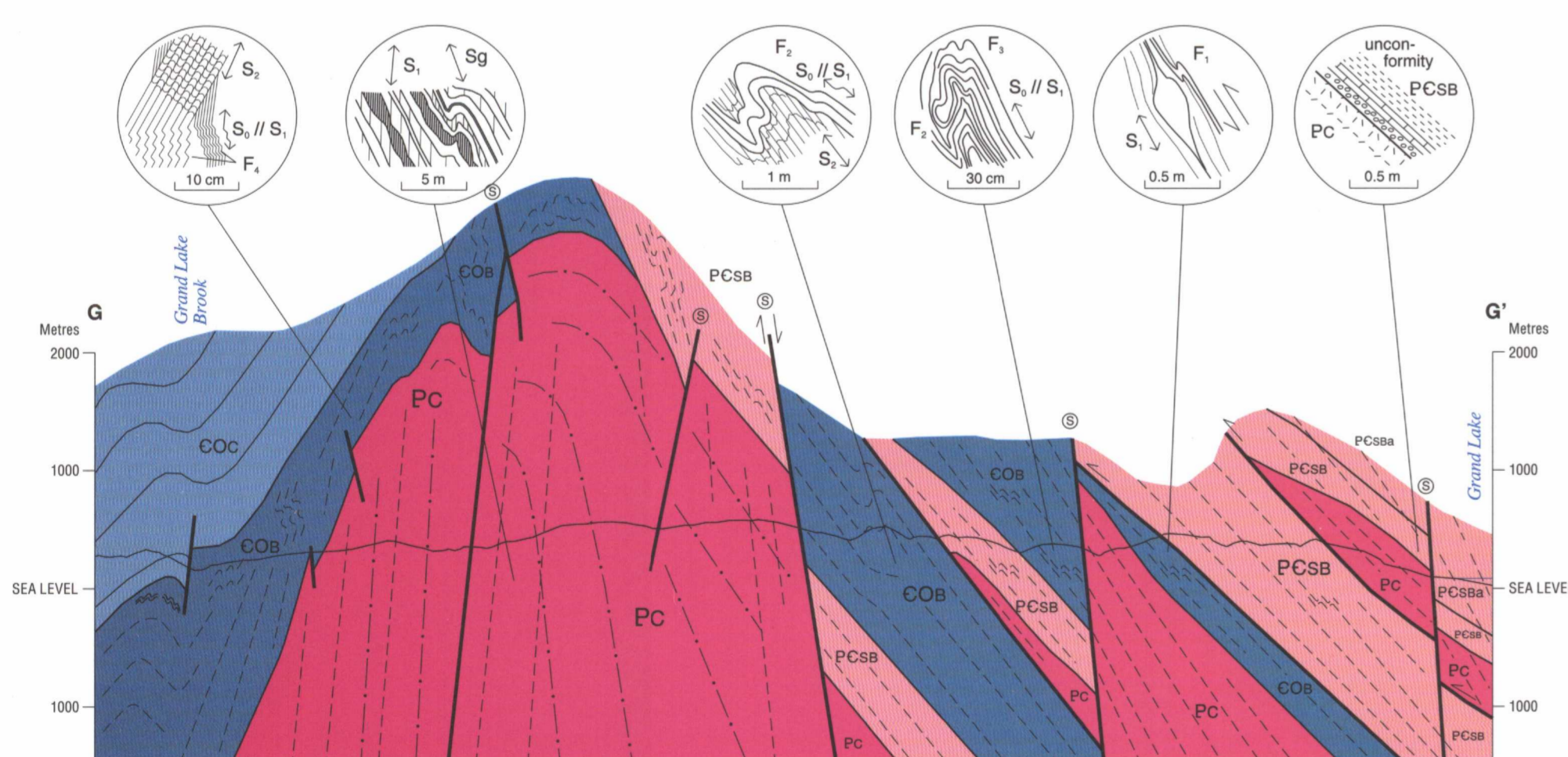
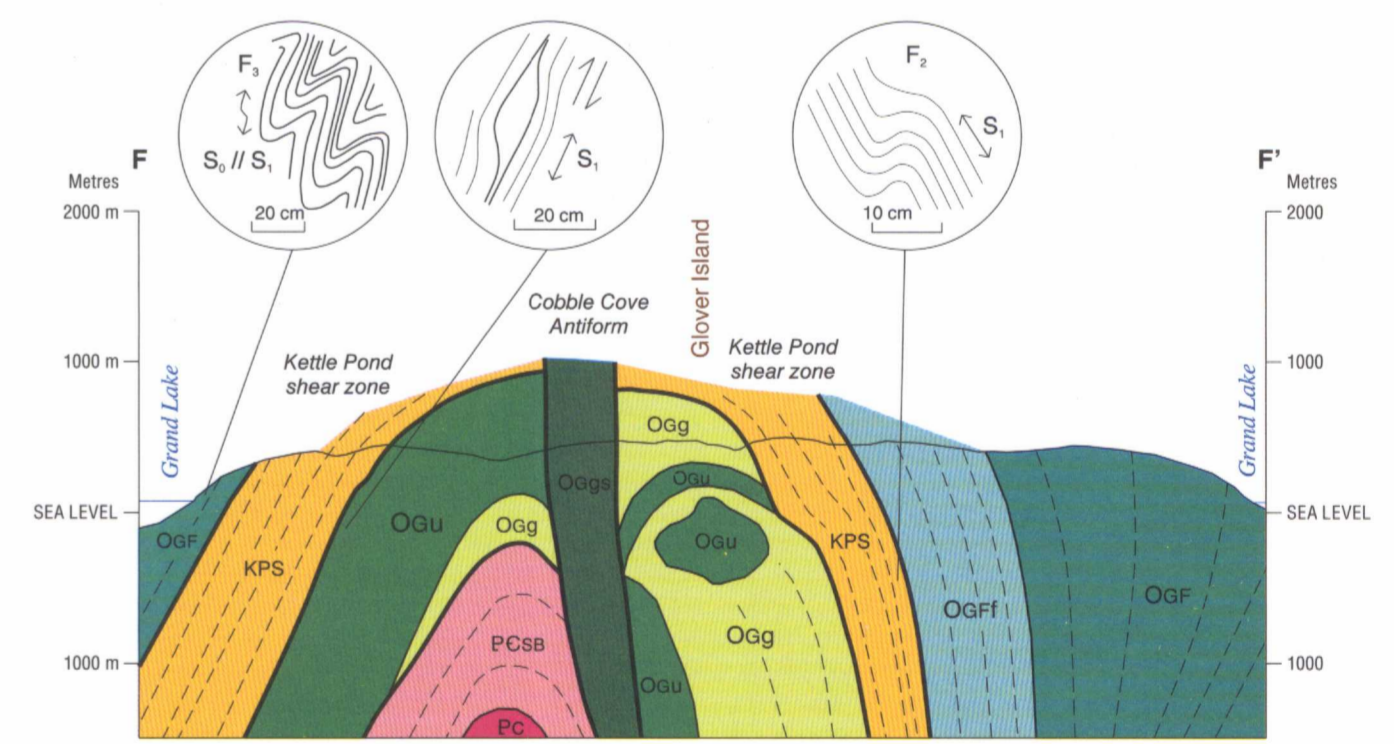
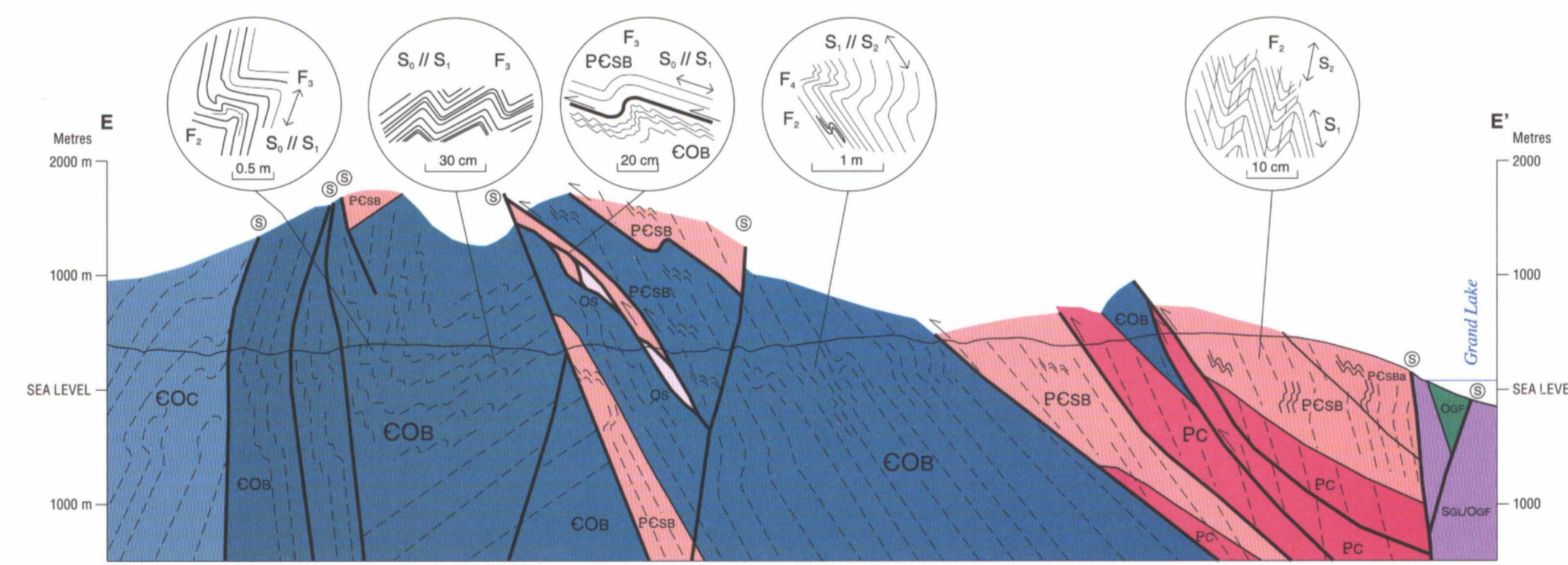
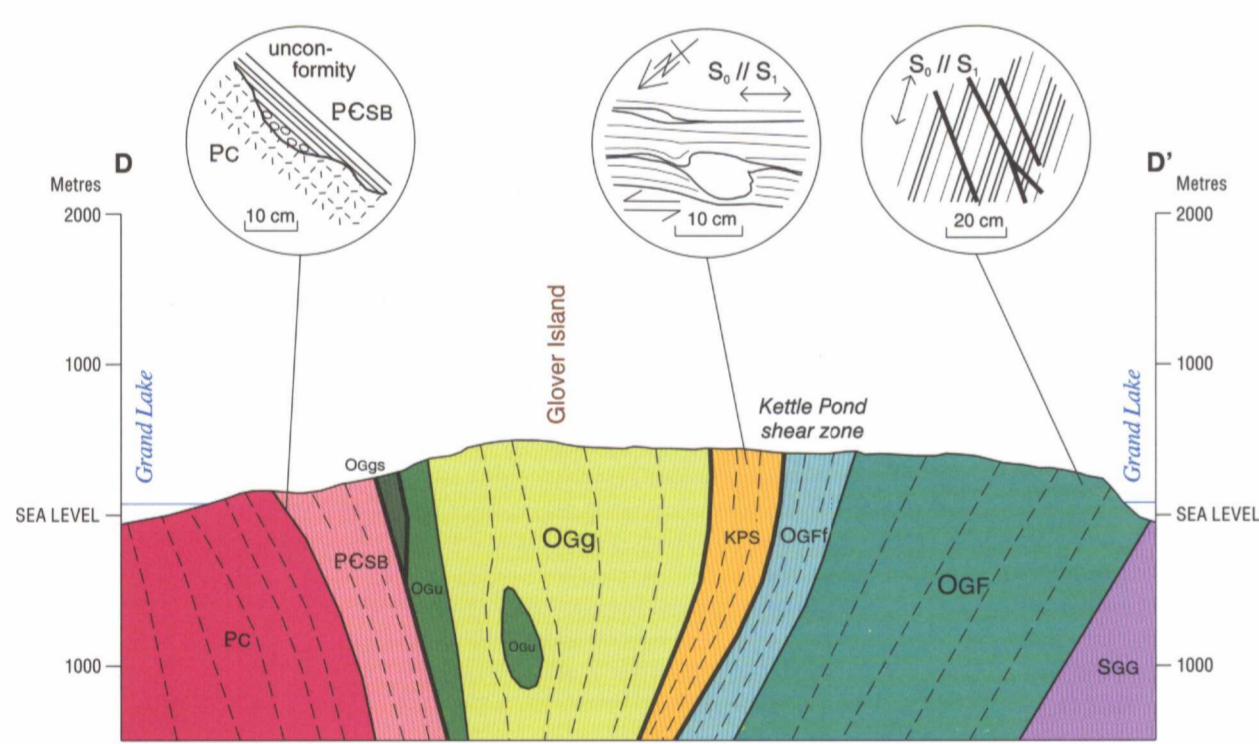
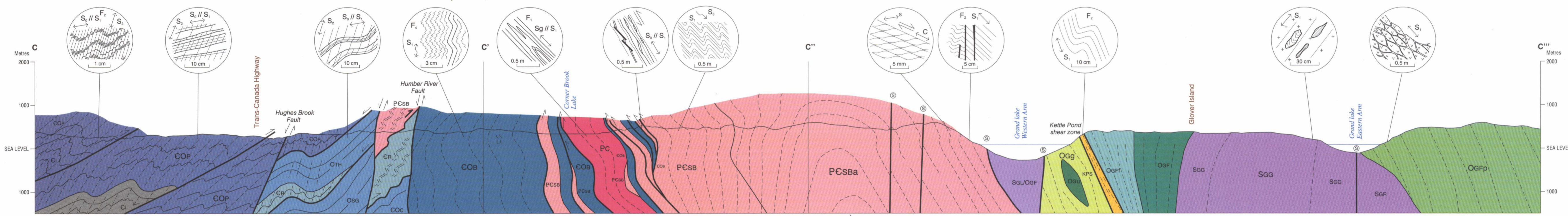
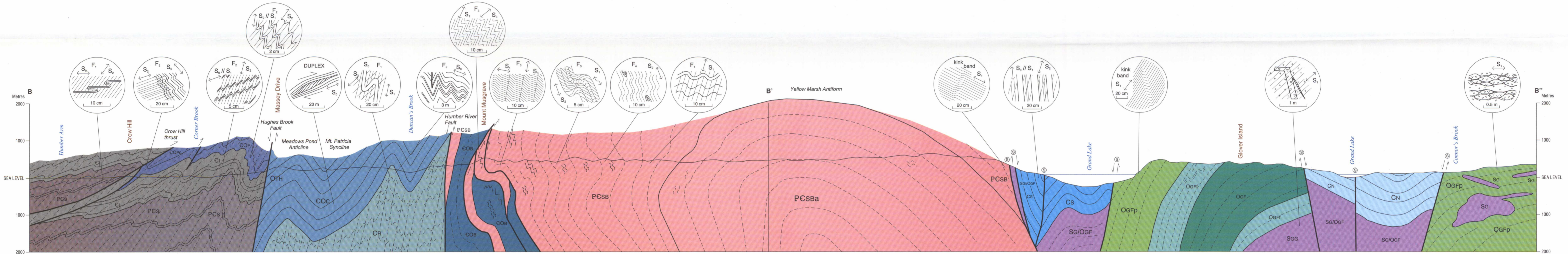
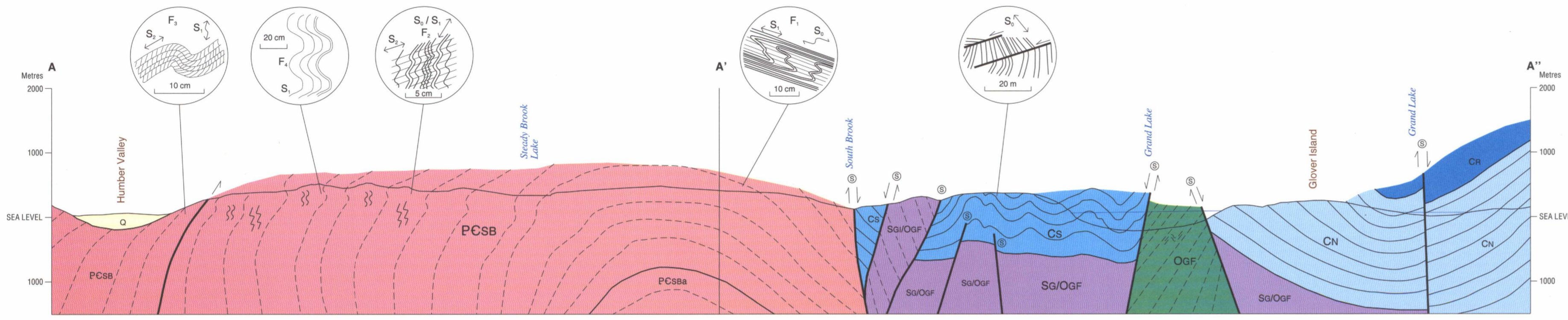


MAP 1893A
SHEET 2 OF 2
CROSS-SECTIONS
CORNER BROOK LAKE REGION
NEWFOUNDLAND

Scale 1:50 000 - Échelle 1/50 000
Kilometres 1 2 3 4
© Crown copyrights reserved / © Droits de la Couronne réservés



LITHOLOGIES IN DETAILED SKETCHES

- Pegmatite
- Granite (Sg)
- Pillow basalt (OGF)
- Pelite and psammite (PCSB)
- Marble (PCSB)
- Granule conglomerate to sandstone (PCSB)
- Basement gneiss (PC)

SYMBOLS

- Geological boundary
- Bedding
- Gneissosity in basement rocks (cross-section only)
- Cleavage or schistosity (cross-section only)
- Cleavage or schistosity (sketch only)
- Fault (sense of movement not determined)
- Thrust fault
- Fault with extensional component
- Fault with strike-slip component

MAP LIBRARY / CARTOTHEQUE

ESIC CIST
MAR 20 1998
Earth Sciences Sector / Secteur des sciences de la Terre

COOPERATION / ENTENTE DE COOPÉRATION SUR L'ÉVALUATION MINÉRALE

COOPERATION AGREEMENT ON MINERAL DEVELOPMENT / ENTENTE DE COOPÉRATION SUR L'ÉVALUATION MINÉRALE

Contribution to Canada-Newfoundland Cooperation Agreement on Mineral Development (1990-1994), a subsidiary agreement under the Economic and Regional Development Agreement.

Contribution à l'Entente de coopération Canada-Terre-Neuve sur l'exploitation minière (1990-1994), entente auxiliaire conclue en vertu de l'Entente Canada-Terre-Neuve de développement économique et régional.

Canada / Newfoundland Terre-Neuve

To accompany GSC Bulletin 427

Sheet 2 of 2, Cross-sections
Recommended citation:
Cawood, P.A. and van Gool, J.A.M.
1998. Geology, Corner Brook Lake region, Newfoundland.
Geological Survey of Canada, Map 1893A, scale 1:50 000.

NOT TO BE TAKEN FROM LIBRARY / NE PAS SORTIR DE LA BIBLIOTHÈQUE

1893A 2 of 2